



News

Tamborine Mountain, Canungra, Tamborine, Beechmont, Beaudesert, Cedar Creek, Boyland



A BIG 'THANK YOU'

The Polish Place's Phil and Ania Sowter, pictured with Jenny Bobeszko (centre), were delighted to be visited last Friday by members of the Ukrainian Community Centre in Brisbane, who came not just to enjoy the Polish hospitality and cuisine, polished off with a few Polish vodkas, but also to say 'THANK YOU' to Poland for its role in assisting Ukrainian citizens who have crossed the Ukraine-Poland border since February. To date, Poland has helped more than two million Ukrainian refugees. Photo: (cover and page 11) Björn Schmal.

TAMBORINE MOUNTAIN COLLEGE KINDY - YEAR 12



EARLY
LEARNING
CENTRE OPEN

ART
DISPLAYS

FREE
ACTIVITIES

FOOD
TRUCKS

OPEN
CLASSES

OPEN DAY

Saturday 14th May 2022 | 10am - 2.00pm

PONY RIDES, ESCAPE ROOM, PETTING ZOO, & PERFORMANCES

80 Beacon Road, Tamborine Mountain

07 5545 3644

tmc.qld.edu.au



Winter is almost Here

All in stock & ready for Installation !!!

Huge Savings



140m2 Heating

Kalora 425R \$1299
SAVE \$527



240m2 Heating

Kalora 500C \$1999
SAVE \$527



220m2 Heating

240m2 Heating

Kalora 500WS \$2149
SAVE \$577

EVERY FIRE COMES WITH A FREE FLUE KIT,
ROOF FLASHING & TOOL KIT



180m2 Heating

FREE FLUE KIT &
FLASHING

Kemlan Tempo3 L or P
\$1999 SAVE \$483



240m2 Heating

FREE FLUE KIT &
FLASHING

Kemlan Tempo Grand
\$2599 SAVE \$544



220m2 Heating

FREE FLUE KIT &
FLASHING

Kemlan Supa Nova
\$2899 SAVE \$522

HAUS
collective
earth fire water

Phone: 1800 290 990

Web : www.hauscollective.com.au

Email : info@hauscollective.com.au



SCENIC RIM EAT LOCAL WEEK RETURNS WITH A SMORGASBORD OF FRESH LOCAL FLAVOURS

From long lunches to farm gates, degustation dinners to picnics and so much more, the highly anticipated 2022 Scenic Rim Eat Local Week program is here!

More than 160 people, including local producers, gathered at Scenic Rim Farm Shop & Café last week to celebrate the launch of ticket sales for everyone's favourite regional food festival.

Mayor Greg Christensen said he can't wait to welcome locals and visitors back for this much-loved food festival.

"Now in its 11th year, Scenic Rim Eat Local Week is back with more than 125 events to sink your teeth into from 25th June to 3rd July, including the signature Winter Harvest Festival on Saturday 2nd July" he said.

"With COVID-19 disrupting Eat Local Week events over the past two years and robbing us of our iconic Winter Harvest Festival, the event's return in 2022 is sure to be an epic celebration of our exceptional food and drink, our passionate producers and our resilient community.

"Plus, we have a special reason to celebrate this year, with Scenic Rim announced as one of the Top 10 Regions to visit in 2022 by global travel authority Lonely Planet, so there's never been a better time to visit and taste your way around the region."

Division 1 Councillor Derek Swanborough said Tamborine Mountain is set to come alive with events in celebration of its talented local producers.

"Whether you like to wine and dine, pair a relaxing picnic with spectacular views, or even learn something new in the kitchen, you'll find something for everything this Scenic Rim Eat Local Week," he said.

"Go behind the scenes and learn from the head distiller at Tamborine Mountain Distillery and Meet the Winemaker at Witches Falls Winery to be guided through a wine tasting.

"Celebrate Christmas in July at the Rainforest Restaurant, ignite all your senses for 'An Evening at the Tamborine Mountain Coffee Plantation' with a multicourse dinner or treat yourself to a Picnic Real Food Bar picnic box to enjoy wherever the Scenic Rim roads lead you."

Division 2 Councillor Jeff McConnell said Scenic Rim Eat Local Week is the perfect celebration of supporting local.

"We're fortunate to have so many incredible producers right on our doorstep and Eat Local Week is the ultimate opportunity to go beyond the farm gate, meet the growers and learn where your food really comes from," he said.

"If you want to try a little bit of everything, don't miss the fan-favourite Winter Harvest Festival in Aratula where you can stock up on produce, test your strength in the Tractor Pulling Competition and keep the whole family entertained with rides, activities and cooking demonstrations.

"No matter your taste, I guarantee there's something for you in the Scenic Rim so get in quick, book your tickets and I can't wait to see you soon."

Tamborine Mountain Distillery General Manager, Gordon Chalmers, said Scenic Rim Eat Local Week is an opportunity for locals and tourists alike to go behind the scenes of Queensland's oldest craft distillery.

"We love throwing our doors open all week and celebrating the connectivity between our business, local suppliers, the natural local botanicals in our drinks and our local environment – it's true agri-tourism at its best," he said.

"Scenic Rim Eat Local Week brings such a strong sense of belonging to so many local businesses, sharing in the pride of our region and acting as a gateway for visitors to explore everything the Scenic Rim has to offer.

"We'll be hosting a variety of tours throughout the week where you can get a backstage pass to the distillery, learn about our production process, and taste our range of liqueurs and spirits. Be sure to book your tickets as we can't wait to welcome you during Scenic Rim Eat Local Week."

Scenic Rim Eat Local Week is proudly supported by Tourism and Events Queensland, Brisbane Economic Development Agency, *The Courier Mail*, Urban Utilities, Kalfresh Vegetables, Moffatt Fresh Produce and Community Bank Kalbar and District.

View the 2022 Scenic Rim Eat Local Week program and find out how to book your tickets at: www.eatlocalweek.com.au




Canungra Dental

Implants
Wisdom Teeth
Crowns
Twilight Sedation
Teeth Whitening

Your cosmetic and family dentists!
Canungra Dental (07) 5543 5299

NEW PATIENTS WELCOME

WE OFFER:

- Weekly community newspaper
- 7100 distributed - to home letterboxes, and to local businesses
- Get your ad in front of more than 20,000 readers each week
- Free online exposure, and online advertising opportunities
- Modern website - great visibility for you
- Social media coverage included with your advertising

#scenicnews +
[facebook.com/scenicnews](https://www.facebook.com/scenicnews)

- Tall A4 size - standout exposure
- High quality gloss print
- 63 years of unbroken publication!
- We cover Tamborine Mountain, Canungra, Tamborine, Cedar Creek & surrounds - bulk drops in Beaudesert

Looking to advertise - reach a bigger audience - have a story to tell?

Call today!

Advertising:

0417 238 238

advertising@scenicnews.com.au

www.scenicnews.com.au/rates

Editor/Production: Andrew Nagy

0432 827 537

info@scenicnews.com.au

editor@scenicnews.com.au

**Advertising?
0417 238 238**

Call or email

advertising@scenicnews.com.au

TM UNIVERSE: FIVE “AIMING FOR THE STARS” SESSIONS



Helensvale-based Gilmore Space is building spacecraft, the Canberra telescope is an essential element of the operations of the James Webb Space Telescope, and an Australian rover is part of the next Artemis mission to the moon.

TM Universe will be presenting in five parts, the latest developments and the essentials of astronomy: from black holes to moon landings, and from dark matter to the Zodiac. Each session will be highly interactive, so please bring your mobile phone with you.

Members of TM Universe are asked for a gold coin donation, the cost to non-members is \$15 per session. Booking is required via the online shop (*use the QR code at the bottom of the page*).

Part 1: Sat 14 May, 3-5pm

The sun's annual movement through the sky; what are the zenith and the analemma; the start of an art competition to create a 6 metre-diameter analemmatic sun dial; sun telescopes and the foreseen purchase of one.

Part 2: Sun 12 June, 3-5pm

The sun and the stars. How does the sun operate and how are stars born? Space missions to the sun, and a tiny bit of relativity and Einstein.

Part 3: Sun 9 July, 3-5pm

The universe, galaxies and clusters. How fast do we move through space and what is the value of the recently launched James Webb Space telescope? We discuss aspects of indigenous astronomy.

Part 4: Sun 14 August, 3-5pm

Planets and exoplanets and the search for life in the universe... Are we alone? Has water been found? What are the results of current space missions?

Part 5: Sun 11 September, 3-5pm

How was the moon born? What is the Artemis mission that will bring people back to the moon? And what can we observe with binoculars and small telescopes on the surface of the moon?

If you attend all five meetings, you will receive a participation certificate, and a free copy of *Green Island in the Sky* (RRP \$40). The sessions are at a level accessible to anyone with an interest in astronomy. Recommended for 12 years-old and up.

We look forward to seeing you there. Use the QR code to buy your tickets.

**Regards
TM Universe Team**





Winter Warmers

Manufactured in Brisbane by Mr Stoves FACTORY DIRECT at WHOLESALE PRICES



ONLY \$1695

Includes 3.6m
Flue Kit worth
\$440

WE ALSO CONVERT OPEN FIRES

Proudly installing on Tamborine Mountain
and surrounds since 1980



Vogue Sierra



VOGUE HEATING

We can quote, supply and install
all of our products

3375 1464

8 Machinery St, Darra
www.mrstoves.com.au

ALSO OPEN SATURDAY

Open Mon to Fri 8am - 5pm

Sat 8am - Noon

FAMILY OWNED AND OPERATED

07 5545 2522



Here is something to smile about:
Mention this ad, and your check-up,
clean and x-rays procedure
is only \$200 (limited time only).

Tamborine Mountain Shopping Square
17-27 Main Western Road, North Tamborine
ehdcreception@eagleheightsdental.com.au
www.eagleheightsdental.com.au

one small place on earth



WHITE-HEADED PIGEONS

– *Columba leucomela*, house, Eagle Heights



Many of Australia's pigeons are notable for their size compared with the domestic pigeon, which is descended from the rock dove, native to Europe, North Africa and western Asia. Feral pigeons (size 33 cm) are domestic pigeons which have returned to the wild and colonised the world, including Australia. They belong to the same genus as white-headed pigeons (size 38 to 41 cm) which are found from Cooktown in Queensland to southern coastal New South Wales, with growing numbers in eastern Victoria. Their preferred habitat is rainforest. These two are males.

Peter Kuttner

Council Notices

SCENIC RIM
REGIONAL COUNCIL

BE HEALTHY AND ACTIVE

Our Be Healthy and Active program of free and low-cost events has resumed. Catering for all ages and abilities, this wide-ranging program offers fitness, yoga, mosaics, line dancing, ballet and tap classes and much more.

For the full list of activities see whatsonscenicrim.com

CUPPA IN THE COMMUNI-TEA

Drop in for a casual cuppa and a friendly chat at our Cuppa in the Communi-tea sessions. We'll have free tea, coffee, biscuits and giveaways. Scenic Rim's library outreach service and representatives of local community organisations will be on hand. Join us at these locations:

HARRISVILLE MEMORIAL PARK
Tuesday 17 May | 10am-11am

PEAK CROSSING HALL
Tuesday 17 May | 2pm-3pm

KALBAR CIVIC CENTRE
Thursday 19 May | 10am-11am

RATHDOWNEY POST OFFICE
Thursday 26 May | 10am-11am

TAMBORINE MEMORIAL HALL
Friday 27 May | 10am-11am

KOORALBYN MEN'S SHED
Wednesday 1 June | 10am-11am

ARATULA SCHOOL
Friday 3 June | 2pm-3pm

BEECHMONT OLD SCHOOL
Wednesday 8 June | 10am-11am



LIBRARIES

Visit scenicrim.qld.gov.au/libraries

DIGITAL DAYS TECH HELP SESSION

Bookings required. Contact your local library for details.

Canungra | Mondays
Beaudesert | Tuesdays
Boonah | Wednesdays
Tamborine Mountain | Thursdays

STORYTIME SESSIONS AT THE LIBRARIES

Bookings are essential as space and number limits apply.

Beaudesert | Tuesday 9.30am | Wednesday 9.30am
Boonah | Monday 10am | Friday 10am
Tamborine Mountain
Storytime for two to five-year-olds | Monday 9.15am
Baby Rhyme Time for babies to two-year-olds | Friday 9.15am

OUTREACH STORYTIME IN THE PARK

Beaudesert | Thursday 12 May | 9.30am
Beaudesert Unyah Jarjun Mununjali | Tuesday 17 May | 10am
Rathdowney | Wednesday 18 May | 9.30am
Kalbar | Thursday 19 May | 9.30am
Tamborine Village | Tuesday 24 May | 9.30am
Peak Crossing | Thursday 26 May | 9.30am
Beechmont | Thursday 2 June | 9.30am
Canungra | Wednesday 8 June | 9.30am

GRANTS FOR SCENIC RIM CREATIVES

Find out about grants available through the Regional Arts Development Fund to support a wide range of creative arts projects.

Click on the Grants & Cultural Initiatives tab on our website, liveatthecentre.com.au or phone 07 5540 5050 for details.

The Regional Arts Development Fund is a partnership between the Queensland Government and Scenic Rim Regional Council to support local arts and culture in regional Queensland.

LIVE AT THE CENTRES

Exhibitions, Performances, Movies, Workshops, Functions and Events

KARL S WILLIAMS & SHANNON SOL CARROLL

Saturday 28 May | 7.30pm
Vonda Youngman Community Centre



CHARLOTTE'S WEB FAMILY CONCERT - BOOK NOW!

Wednesday 6 July | 9.30am and 12pm
Boonah Cultural Centre

CHARLOTTE'S WEB



regeneration
A CREATIVE BUSH FIRE RECOVERY PROJECT

Saturday 21 May | 11am | The Centre Beaudesert
Launch of book and documentary. Free. Registration required.

WILD FILM FESTIVAL

Friday 27 May | 7pm with guest speaker
Saturday 28 May | 10am 1pm and 7pm
Boonah Cultural Centre

See the full cultural program and event details at liveatthecentre.com.au or phone 5540 5050



Property of the week

SALE 🛏️ 4 🛁 2 🚗 2 🏠 1,002 m²

Unique mountain home with views \$ 895,000+
12 Magnetic Drive, Tamborine Mountain

- Solid construction, timber paneling with charm and character
- Lounge generous in size with open fireplace and exposed beams
- Large attic area adjoining main bedroom, great retreat space
- Balcony off main bedroom offers Gold Coast views
- 4 Levels of various spaces, great family home

AGENTS:

Barry Chick
0418 876 191



Property of the week

SALE 🛏️ 3 🛁 1 🚗 4 🏠 1,012 m²

Well maintained home with views \$ 798,000+
6 Nipa Court, Tamborine Mountain

- Treetop escape overlooking natural bush to the GC skyline
- Located in a quiet cul-de-sac, filled with natural sunlight
- Fully fenced, workshop underneath, plenty of parking
- This could be your break-away holiday home, or your forever home...it is the perfect retreat

AGENTS:

Linda Hogan
0414 300 558



PROPERTY MANAGEMENT

Short and long term rentals

Looking for the BEST management team to manage your investment?

You'll be in great hands all year round!

We would love to help you

Call us...

Mountain 5545 4000/ Tamborine 5543 6444

OPEN HOMES Sat 14th

11 - 11.30	7 Mayon Court
11 - 11.30	164a Wongawallan Road
11 - 11.30	33a Ormeau Rd, Wongawallan
11 - 11.30	15 Tolima Drive
11.30 - 12.30	7-13 Hartley Road
12 - 12.30	4-6 Demavend Drive
12 - 12.30	u24/27-29 Capo Lane
12.15 - 1	12 Magnetic Drive
1 - 1.30	9 Makalu Court
1 - 1.30	33 Justin Avenue
2 - 2.30	96-100 Kilmore Dr, Tamborine
3 - 3.30	1 Natures Cl, Currumbin Valley
3 - 3.45	38-46 Boomerang Dr, Tamborine

OPEN HOMES Sun 15th

2.30 - 3	10 Laurina Dr, New Beith
----------	--------------------------



Review: seller- 1 Mangano Crt, Yarrabilba
Charmaine provided excellent service from beginning to end. She has been very honest in her dealings and her communication was super easy. I would highly recommend Charmaine to anyone purely for her professionalism



AGENTS: Team Charmaine & Linda
0460 444 100/0414 300 558



SALE 🛏️ 3 🛁 1 🚗 1 🏠 607m²

28 Huyber Lane, Tamborine Mountain

- Ideal first home or investment property
- L-shaped lounge/dining with air-con & fire
- Great water supply with well on property
- Short walk to Eagle Heights shops, post office, bakery, cafe, foodworks

\$620,000+

AGENTS:

Diane Pihl
0424 653 316



SALE 🛏️ 5 🛁 3 🚗 3 🏠 3 acres

38-46 Boomerang Road, Tamborine

- Expansive dual living, great family home
- Fully self-contained, 2-bed, living, kitchen
- Sheds, plenty of room for mower, tools
- Solar hot water, split system air-con
- 3 usable acres, in-ground pool

\$999,000+

AGENTS:

Linda Hogan 0414 300 558
Charmaine 0460 444 100



SALE 🛏️ 4 🛁 2 🚗 4 🏠 6,996m²

7-13 Hartley Road, Tamborine Mountain

- Perfect North\Easterly aspect
- 3-sided undercover veranda overlooking garden
- Carport & garage/workshop-will fit caravan
- Greenhouse, fountain in entry courtyard
- Enjoy the grace & elegance of yesteryear

\$1,797,000+

AGENTS:

Elizabeth Stirling
0400 449 978



ARE YOU THINKING OF RENTING YOUR PROPERTY?



RENTAL

We need rental properties to fill the demand

- We have no available rentals on the Mountain, nor in Tamborine, or surrounding areas
- Are you interested in an investment appraisal?
- Looking for new Property Managers?
- We offer complimentary appraisals for sales and rentals

If you are thinking of renting, or just curious, we would love to help you

AGENTS:

Sarah Lewis 0429 001 013
 Amy Orr 0474 315 000
 Shanelle 0447 660 080



SOLD

4 2 2 6,131 m²

25 Winema Drive, Tamborine Mountain

Upsizing or a work life balance, more reasons to see us! Congratulations to buyers Guy and Romina, Amelie & Nick. Enjoy your new family home and the extra space. As you already live on the Mountain I don't need to sing it praises. To Katie and Tony, moving to Brisbane to be closer to your work will give you more 'me' time, and you will still be close enough to visit the mountain!

Interested in a current market report & value of your property? Call for a complimentary one!

AGENTS

Elizabeth Stirling
 0400 449 978



CELEBRATING A NEW MILESTONE IN BREAST CANCER RESEARCH

\$4 MILLION REASONS TO SAY THANK YOU

As the sole Diamond Partner of the National Breast Cancer Foundation, we at Professionals Real Estate wanted to take a moment to say thank you! You may or may not be aware that a portion of every property sale we make is donated to NBCF and today we have reached a total of \$4 million in total funds raised! This month we are celebrating this achievement by writing to all of our customers that have contributed by listing with us.

So THANK YOU for helping us raise awareness and funds for NBCF, an organisation that is committed to helping the one in seven women who are diagnosed with breast cancer in their lifetime in Australia. Together, we are working toward achieving NBCF's goal of zero deaths by 2030.

07 5543 6444

ProfessionalsTamborine.com.au

2205 Beaudesert-Beenleigh Rd, Tamborine 4270



07 5545 5000

ProfessionalsTamborineMountain.com.au

10 - 12 Main Street, North Tamborine 4272

SCOTT BUCHHOLZ SEEKING FOURTH TERM



Scott Buchholz was the inaugural Member for Wright in 2010 and has held his seat in every election since then.

He is the Assistant Minister for Road Safety and Freight Transport and was one of the longest-serving members of the House of Representatives Committee on Economics.

Before entering parliament, he worked as a ringer in the cattle industry and as a manager in the agri-finance business, before becoming a successful owner-operator in the transport industry.

Born in Rockhampton in 1968, Mr Buchholz has been involved in politics since the age of 18.

“I appreciate the tremendous support I have received during my four terms in Parliament and in the run-up to this election I am campaigning strongly right across our diverse electorate – from Tamborine Mountain and the Scenic Rim to the Lockyer Valley and the suburbs of Logan City and the Gold Coast,” he said.

Mr Buchholz said two key priorities he outlined in his maiden speech in Parliament remained a core focus of his work today:

- creating an economic environment that puts more money in the pockets of hardworking mums and dads each week, and
- making small business more profitable by reducing government red tape.

“Despite the biggest economic shock to Australia since the Great Depression due to the coronavirus and a succession of natural disasters, the Morrison LNP Government has delivered for our country and community,” said Mr Buchholz.

ADVERTISEMENT

OUR PLAN IS BUILDING A STRONG ECONOMY FOR A STRONGER FUTURE

-  Creating more, better paid jobs.
-  Delivering tax relief for workers and small businesses.
-  Investing in roads, rail and bridges.
-  Making record investments in health and aged care.
-  Investing in stronger defence to make Australia safer.

Find out more at www.scottbuchholz.com.au

Scott **BUCHHOLZ** MP
Federal Member for **WRIGHT**

 LNP LIBERAL NATIONAL PARTY

Authorised by Scott Buchholz MP, 21 William Street, Beaudesert, QLD 4285.



JON KRAUSE MP

State Member for Scenic Rim

QUEENSLAND HEALTH CRISIS

New figures have revealed Queensland's ambulance ramping rate – 38% across the state – is the highest in Australia. Patients are suffering as a result. It means that 38% of all arrivals at Queensland hospitals wait longer than they should be taken into hospital, and it also means that those ambulances that are stuck on ramps cannot be dispatched to help other people in need. This affects areas like the Scenic Rim so much more, because getting another ambulance (one that is not ramped) takes longer because of the distance from our towns to the major hospitals where ambulances get stuck. On both counts, this is extremely serious. I want to thank all doctors, nurses and other health professionals for the sterling job they do. They are highly skilled and diligent people. They do a terrific job in a system that is not working for anybody the way it should – a system that needs fixing.

We need – and deserve – a health system that is able to treat Queenslanders in their hour of need. Unfortunately, things are not heading in the right direction. Recent information released shows 17 hospitals across the state have recorded increases in ambulance ramping, with almost one in every two patients at the Gold Coast University Hospital being left on stretchers, in corridors and hallways for longer than 30 minutes.

On the other side of the Scenic Rim Electorate in Ipswich, LNP Leader David Crisafulli and Shadow Minister for Health and Ambulance Services Ros Bates held a 'townhall meeting' recently to hear from locals and health professionals about the health crisis. Ipswich Hospital has the worst ambulance ramping in the state, with 56% of patients who arrive in ambulances waiting longer than they should for treatment. Stories were heard from Queenslanders waiting hours for emergency treatment and from locals who have been on the surgery waiting list for years.

The Labor Government urgently needs to find a plan to fix Queensland's hospitals, because these new figures are deeply concerning. Queenslanders have seen the images of ambos and police queued up at hospitals and heard the stories from patients being forced to wait hours for care. Lives are on the line here, and the State must start listening to Queenslanders, acknowledge there is a problem and make changes to fix this issue.

SCENIC RIM ELECTORATE OFFICE

You can contact me by phone, toll-free, on **1800 813 960**, or email scenicrim@parliament.qld.gov.au, so I can lobby on your behalf in Brisbane. In an electorate as large as the Scenic Rim, there are lots of issues and I appreciate your feedback that helps me do my job as well as possible.

ADVERTISEMENT



Jon KRAUSE MP
Member for **Scenic Rim**

Fighting for our fair share

☎ 07 5515 1100 f JonKrauseMP

Authorised by J.Krause, 91 Brisbane Street, Beaudesert QLD 4285.

MEMBERS WELCOME INSIGHTFUL AND FASCINATING UPDATE



The Probus Club in April welcomed Guest Speaker Colonel Arran Hassell CSC, Assistant Commander – Training, Headquarters 11 Brigade.

Colonel Hassell was born and raised in country Victoria. He is also a member of Tamborine Mountain Returned and Services League and has previously been the Vice-President of the Tamborine Mountain Sports Association and a coach of a Tamborine Mountain junior cricket team. Colonel Hassell enjoys running, kayaking, cricket and reading; together with his wife, they enjoy travel, bushwalking and time with family.

Arran provided our members with a very interesting and informative talk about what is happening around the globe from a military perspective.

In particular, he spoke about Australia's involvement in Afghanistan, the reasons for our 20-year commitment, and our need to maintain strong connections with the USA for our future national security.

He also spoke of the conflict in Ukraine, the global response and his assessment of further Russian operations. He concluded by discussing increasing security challenges in the Indo-Pacific region with the emergence of China as a global and regional power.

We welcome any new potential members to attend our general meetings on the 3rd Wednesday of the Month, at the Vonda Youngman Community Centre from 10-12.

Contact Bob Hepple at bob.hepple@gmail.com or on 0411 776 888 for more information.

Barry Chick



Letters to the Editor

TO ALL WHO HAVE CONCERNS FOR THE WELFARE OF OUR COMMUNITY

I am writing this open letter to address my concerns about the current housing crisis and the impact it is having in my community of Tamborine Mountain, and no doubt across the Scenic Rim.

Recently I became aware that rentals on the mountain have increased to a level no longer affordable for people on an average income, also that the shortage of stock means that potential renters are often giving a year's rent in advance in order to secure the rental.

While the focus seems to be on sustainability of the tourism sector, this skews adequate service being provided to the community, and that 'community' means all those who are living in the Scenic Rim not just businesses and ratepayers.

Too often I hear stories in this community of people living in their cars or caravans or being forced to move away from the Mountain and the Scenic Rim, as they can no longer afford to pay the rents now being asked.

As a representative of the arts community who has lived on Tamborine Mountain for over 30 years, I fear the loss of diversity, vibrancy, creative talent, community contribution and custodianship that comes with gentrification. My experience of the rental market on Tamborine Mountain over a 20-year

period meant that I could, during that time, raise my family in a creative, community environment and continue to contribute as so many others have, to the development of a caring, creative community.

Might we consider planning for Tiny Houses, micro homes and other affordable housing solutions on the Mountain so that an area could be zoned accordingly, providing the requisite amenity and services to those who could afford to live in a tiny house? This would indeed encourage more diversity in our community, provide an entry point into our community for young people, creatives and those who are not able to buy or rent in the increasingly costly housing market.

Let us think laterally about this issue. Consider the contribution of young people in shaping the vibrancy of our region. Consider housing designed in a more environmentally sustainable manner than the surrounding house farms that plague the edges of our cities, where design leads to social problems for the future.

A housing crisis is a social crisis we all are responsible for. As an important representative for our community, I look forward to hearing from you about a meeting to discuss what might be done to mitigate the current housing crisis in our region.

Bronwyn Davies



Tamborine Mountain's The Polish Place last week was host to an enthusiastic group of visitors from the Ukrainian Community Centre of Queensland (based in Brisbane), to sample the famous cuisine and hospitality, and to give thanks to the Polish community for helping to relocate Ukrainian refugees.

VARRO CLARKE & Co LAWYERS

Est. Brisbane 1974
Est. North Tamborine 1985

**6 - 8 Main Street
Tamborine Mountain
Queensland 4272**
clarke@varroclarke.com.au

Partners

**Varro Clarke
Margaret Steen**

Consultant

Stephen Train
Special Counsel

OFFICE HOURS
Monday to Friday
8.30am to 5.00pm
Tel: 5545 1033

Wills - Family Trusts - Estates
Sales and Purchases of houses and businesses - Testamentary Trusts
Complex Commercial Advice
Commercial leases - Shop Leases



TAMBORINE MOUNTAIN MEDICAL PRACTICE

14 Main Western Road
North Tamborine
and
Shop 1/17 Southport Avenue
Eagle Heights

Phone: 07 5545 1222

www.tamborinemountainmedical.com.au
online booking service available on this website

50 years of continuous service to the
Tamborine Mountain community

Affiliated with three universities

COMPREHENSIVE HEALTH CARE SERVICE

Opening Hours:

Mon – Thurs 8.30 am – 6:15 pm
Fri 8.30 am – 5 pm
Sat 8.30 am – 12 noon
Sun 8.30 am – 10.30 am
(Sundays are Telehealth only)

Dr Ann Bennett
Dr Leeann Carr-Brown
Dr Jan Zomerdijk
Dr Sanne Kreijkamp-Kaspers
Dr Henri Coombs
Dr Cobie Powell
Dr Hok-Yee Siu
Dr Marije Dalebout
Dr Iqbal Meeran



Accredited by



SANNE KREIJKAMP-KASPERS

SANNE KREIJKAMP-KASPERS

Space, nature and sunshine were the three reasons why Sanne and her husband Jaap decided to move from The Netherlands to Australia, back in 2007. Editor Jaap Vogel asked the GP of TM Medical Practice how they ended up on Tamborine Mountain.

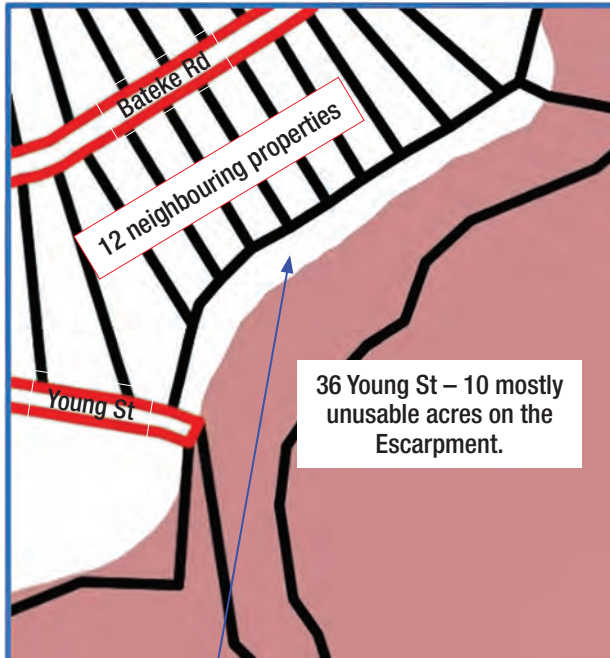
"I found work in Mackay, so that is where we moved first. While the work was appealing, the area was not, and in 2010 we moved with our sons to the Mountain. I could continue with my job at Bond University, and the Mountain offered good schools for the boys. They both have now enrolled at schools at the Gold Coast, so Jaap has to drive them up and down every day. But Jaap works from home, so that is also no problem.

"The sun, space and nature were decisive factors to move to Australia. But it is a draining and very costly process to transfer the Dutch licence as a GP doctor to an Australian one. Since the affair with Dr Patel, and other problematic cases, the Government has been very cautious. That is understandable, but it does not help to solve the shortage of doctors.

"We all love it here in Australia and on the Mountain. No, we don't think about going home, because we are already home. Being involved in the Orchestra also helps a lot; I'm currently the President. And then there is the space: our chook-pen is 100m² – that is the same size as the house we had in The Netherlands. We love the space and the community, and of course the walks in the national parks: how good is it to have a park like Palm Grove right on your doorstep?"

A POOR START TO OUR GROWTH MANAGEMENT STRATEGY!

With its Growth Management Strategy causing concern for residents over loss of lifestyle amenity and our unique landscape character, the Planning Department's ongoing advocacy for overdevelopment in a current case must surely sound the alarm. The case is MCU20/077 – 10 'nature-based tourism' cabins at 36 Young St.



The 10 acre block is mostly unusable, being mainly within the high-risk landslip zone (brown shading) – leaving a thin sliver of developable land (arrow) with 12 neighbouring properties. The developer wants the maximum number of cabins which **may** be allowed under the Planning Scheme – the same allowance as a 10 acre 'usable' block with no existing approvals.

However, there is already substantial existing development at 36 Young St, consisting of 4 approved uses:

- A 3-bedroom dwelling
- A 3-bedroom B&B
- A 40-person function room
- An agricultural business.

The additional 10 proposed cabins will be the 5th use. Yet more additional uses are foreshadowed in the application, apparently with Planning Department compliance as it has included 'Future Intensification' (which **may not be subject to public consultation**) in its recommendation to Councillors. How much more intense can it get? See comments below re: the inadequacy of the proposed wastewater system. **All this bodes ill for 'Growth Management' consistent with the natural image of Tamborine Mountain – which image has attracted worldwide attention.**

All current and proposed structures will be in an area a mere ~ 180m x 25m.

To squeeze the 10 cabins into what remains of the tiny usable area, the Developer seeks (with Planning Department support) to **substantially violate the 'minimum 20m setback where involving tourism activities'** stipulated in the Planning Scheme – resulting in cars parked at neighbours' boundaries with cabins close by (conveniently near the 40-person function room). **The Planning Manager advised Councillors during an 8 Feb meeting (transcript available) that the cabins could likely be built at the 20m setback (placing most of them further into the high-risk landslide zone), stating 'in nearly all cases there is a technical engineering solution to it... but sometimes the cost of doing it is higher... but it's not common that the structure itself couldn't go ahead' and that the Planning Department was avoiding the situation where 'geotech becomes too difficult and too costly' (for the Developer).**

But why are Council officers even considering reducing the minimum 20m setback to favour the Developer – to the conceded detriment of neighbours? Planners (should) know they cannot consider developers' costs when assessing a proposal, yet the Planning Department persists in advocating an uncompliant plan over residents' reasonable expectations that the content of the Planning Scheme will be actually applied.

Despite the application being lodged in 2020, planners have failed to act in respect of non-compliance with numerous other planning criteria, **submitting the Developer's plans unchanged** for Councillors' approval – stating that the application was 'generally compliant' **at the same time acknowledging the substantial negative impacts on neighbours.**

Community concern doesn't stop there. The Developer's own engineer has acknowledged that the project's small wastewater system would likely fail if its capacity was regularly exceeded. This system was included because a larger system was 'unlikely to be approved' and would trigger State Government Environmental Assessment. This inadequate system was 'justified' using the Developer's **unenforceable 'business plan' based on hypothetical and reduced guest numbers** instead of full occupancy figures. System failure will result in poorly treated or **untreated**

sewage on the Escarpment.

Yet still the Planning Department advocates the proposal – as it did when it was advised some cabins were in the **high-risk landslide zone** despite **'nature-based' tourism being a prohibited use** in that zone with its establishment or expansion to be avoided near that zone. In the 1981 Willmott Report, on which Council's Landslide Hazard Code is based, building is not recommended within 15 to 20 metres of the plateau edge due to inherent instability along the edge, yet the Planning Department is recommending approval of cabins positioned 'on the edge' and within the high risk landslide zone, in contradiction with the Planning Scheme and Council's stated commitment in its 2020 Fact Sheet, to a Duty of Care to protect people, property and the environment from the risk of landslide!

Alarm bells must be ringing by now for all Tamborine Mountain residents concerned about inappropriate development. The Planning Manager has scoffed at the concerns of residents and the community, stating that **200 objections to the Young Street development were 'negligible'**. It appears that development trumps all other concerns including negative effects on our lifestyle and on our unique environment.

The Planning Department's pro-development stance also disregards the Strategic Framework 2020 - the document which prevails over and directs how the Planning Scheme is applied and which acknowledges the differences between SRRC regions when considering 'appropriate' development. For the Escarpment Protection Zone relevant to 36 Young Street, the Intent of the Scheme is clear, repetitive, and unambiguous – **low intensity/density development which avoids impacts on neighbouring properties may be considered on appropriately sized blocks in accordance with community aspirations.** This proposal fails all these criteria but is still recommended by the Planning Department. A case of development for its own sake? Revenue over residents?

Via its long-term advocacy of this proposal, the Planning Department has indicated its preparedness to disregard both the Strategic Framework and the unique nature of Tamborine Mountain – the reason most residents choose to live here. Given that Growth Management is a reality, a 'development regardless' Planning Department that deliberately ignores its own planning framework in favour of developers and development has the potential, unchecked, for irremediable harm.

Advertisement



STRONG BODY, STRONG SPINE

We have just started an 8-week yoga course, with the focus on using the yoga to grow stronger. And the same yoga will help us grow more flexible, breathe with more focus and calm our minds.

For beginners, and always accommodating more advanced yogis, the course will progress over the 8 weeks, taking someone who has never done yoga before, and at the end of the 8 weeks that student will present as a competent yogi. And we always think of strength as bulging muscles and a ripped, lean look. But being strong means you are able to use your body easily in a variety of circumstances so that you can enjoy all of the activities you want to do. And because yoga uses multiple muscle groups at once, most postures have the potential of using your entire body. A strong, flexible body with good core tone stabilises you and gives you better balance and posture, all of which can help prevent falls, decrease back pain, and keep you mobile as you get older. It also allows you to enjoy your other fun pastimes, be it running, mountain biking, weight training or digging in the garden, you'll have more endurance and less chance of getting injured.

It's common knowledge that the yogis of old used to measure the youth of a student as to how flexible their spine was, the posture of that student and how they moved through space, the ability of that student to balance and if that that student still had all their faculties: sight, hearing, smell, taste and mind. And the key to having this youthful body and mind was a strong, supported spine. Even though we think of the spine as one of the primary supporting structures for our body, it is also the basis of our individual consciousness, as the nerve cells within the spine carry all the nerve signals that are required to sustain our waking, dreaming and sleeping states of being. Your spine is living tissue, and it rejuvenates itself by constantly breaking down and rebuilding.

Yoga is a whole-body pastime. The movements are dynamic, flowing and require core strength. The core is the centre of our body and it functions to stabilise the trunk while the arms and legs move during functional movements. The core is a box structure made up of the abdominal muscles in the front and the sides, the paraspinal and gluteal muscles at the back, the diaphragm at the roof, and the pelvic floor and the hip girdle muscles as the floor. The abdominal muscles create a rigid cylinder around the spine during movement and provide stability.

It's going to be a fun 8 weeks and as winter progresses, we'll notice a huge difference in our bodies, growing stronger each week.

Margot Wagner
Yoga Under the Bodhi Tree

(Find and like articles similar to this on my Facebook Page: Yoga Under the Bodhi Tree)

Relationships



FASTER OR FURTHER

***"If you want to go faster, go alone. If you want to go far, go together."* African proverb**

There wouldn't be a parent who hasn't thought that the task they were doing with their child would be so much quicker if they were doing it alone. Training a child in the simplest of tasks requires much patience as well as a willingness to drop one's standards as to what makes for a good result! Why do we, as parents, put ourselves through the painstaking process of working alongside our kids? Because our focus is not on the short-term benefit of a clean house or a neat yard. Our aim is to mentor and equip the young lives that are under our care. The journey is not a sprint, but a marathon set at a pace determined by the keeping-up capacity of the shortest legs.

There are many things we need to do in life that are quicker and less complicated when we do them independently. Some tasks necessitate this. The ability to work independently is an essential skill. But even in our individual pursuits, behind the scenes another's input has equipped us along the way. In 1623 John Donne famously wrote "No man is an island, entire of itself; every man is a piece of the continent, a part of the main". For every time an athlete achieves a faster record, there is a support system that has made this possible. The brief journey from the starting line to the finish line is completed alone but the long journey to get to that point is a combined effort. To quote Dolly and Kenny, we are islands that rely on each other.

From a career perspective, research has found that those who continue to flourish in their chosen professions refer to the important contribution of a few well-chosen colleagues. Peer support is an important facet of the helping professions where peers meet together to collaborate, support and challenge one another on their work and development. Without collaboration we cannot create generative dialogue together. This is dialogue that listens and explores in a way that generates new understanding, new knowledge and new capabilities.

We live in an increasingly complex, interconnected and interdependent world. Many of our issues and challenges lie not so much in individuals but in the connections between us. When a rupture with another person occurs, going it alone seems an easier option. It may be a quick fix solution, but in the long-term you will be limited in how far you can go. Rupture fixing is an uncomfortable process that involves confrontation, vulnerability and humility. However, it reaps long-term benefits, whether it be with a colleague, family member, neighbour or friend. At some point in your journey, you will encounter a bump in the road where you will appreciate the presence of a travel buddy who can offer a hand up, encouraging you back on track and, likewise, they will appreciate your support.

Linda Gray
linda@relationshipsanctuary.com.au
0401 517 243

Physio Talk



with NEIL BELL

10 YEARS!



Thank you. Thank you for all your support, guidance, help, encouragement and constant cheerleading. Thank you for always backing Bec and I and the whole of the Physique family to make a difference in your lives. And thank you for your love.

Last week we celebrated 10 years in business. That's something. Statistically, we are an anomaly. Only 25% of all businesses in Australia make it to the 10-year mark.

This hasn't happened by chance or by luck. These are not something I give any belief to, and is most definitely not the reason that we have defied the odds and have thrived. We have worked hard. Unbelievably hard. It takes a lot to own a small business and we have given it. But our hard work is also not the reason for our success.

The real reason is because of you. It's all because of you. Our patients, our families, our friends our referrers. Our community.

The only reason Physique was created was to make a difference in our community. And we have. That is without a doubt. In the past 10 years, Physique

has treated just over 10,000 different members of our community. Which is remarkable, considering the population of the Mountain and surrounds is around 10,000. We have carried out almost 90,000 treatment sessions. 90,000! And we have given just under \$50,000 to our local clubs and events through sponsorships and donations.

We have helped most of you recover from injury, heal from pain, and just generally, kept you going. We have been through some very dark and challenging times together. Pain, in all its forms, is horrible and is a bully. We have confronted it and stood up to it and stared it down, side-by-side for 10 years.

We are obviously fulfilling our mission of making a difference.

But we have got so much more in return.

When we started Physique, the world was in the midst of a Global Financial Crisis. "Don't do it," said all the experts: "You are bound to fail." Bec was on maternity leave, she had no income. Both our kids were under 3 and we were so sleep deprived our brains barely functioned. Our household didn't have enough money. There were many weeks where we didn't pay ourselves.

And yet, there you were. Our encouragers, our cheerleaders, our support. Our community. You would bring me lunch because I skipped lunch to fit you in for a treatment, you would bake us cookies just to show that you loved us, you mowed our lawns, you prayed for us and with us and you told us to keep going. You told us how much you needed us and how important what we were doing was.

And so, we did keep going. We wouldn't have, if it wasn't for you. We've had celebrations and births and marriages, and we have had deaths and funerals and sadness. But through it all, we have had love.

At Physique, we love each other, we love our community, and we love every client of ours. And I guess, when we get right down to it, that's the reason we are still here 10 years later. Love. Pure and simple. Incredible, really.

And so, once again, just... *thank you.*

Physique Health

Call on 5545 1133

10 Years Of Making A Difference



Pethers Rainforest Restaurant

Intimate, romantic dining experience

Open Monday, Tuesday, Thursday to Saturday evenings – quiet, private and very intimate setting, ideal for couples.
28B Geissmann Street
(07) 5545 4577



1



Tamborine Mountain Distillery

Over 300 international awards

Australia's most internationally-awarded distillery and liquor brand in the New Millennium. Manufacturers of vodkas, liqueurs, schnapps, eaux-de-vie. 10am to 5pm – 7 days per week
10 Macdonnell Road (07) 5545 3452



2



Tamborine Mountain Pizza

Dine-in, Takeaway, Delivery

Established in 1994, enjoy our signature dough prepared daily on site topped with a variety of fresh ingredients, many locally sourced.
4/11 Main Street
(07) 5545 3888



3



Tamborine Mountain Pasta

TAKEAWAY, DINE-IN, LICENSED

OPEN WED-SUN:
11.30am – 2.30 pm lunch
5pm – 8pm dinner
Shop 1A/15 Main Street
(07) 5545 3795



13



The Polish Place

Polish Restaurant. Cottages. Gallery. Coffee. Vodka. A true Polish Experience

With 180° views overlooking the Great Dividing Range, it's the ideal location to experience luxury accommodation, scrumptious Polish cuisine, beers and vodkas
www.polishplace.com.au
333 Main Western Rd, 5545 1603



4



Fox and Hounds Country Inn

Gold Coast's only Authentic English Pub

Share a hearty dining experience with friends and family, while soaking up the spectacular surrounds. Open for lunch and dinner 7 days.
7 Elevation Drive, Wongawallan
(07) 5665 7582



6



Rainforest Restaurant & Lounge Bar

Dining within a tranquil rainforest setting!

"Loved the atmosphere and the service was very warm and friendly. The food was beyond great and we would love to come back every night if we could. Fantastic."
Brad C. – The Fork
Thunderbird Park, cnr Cedar Creek Falls Rd 07 5545 7990



5



Witches Falls Winery & Cellar Door

Tamborine Mountain's only working winery

Wines that shine with individuality and confidence. Enjoy wine tasting in our relaxed and picturesque setting. Locals receive members pricing. Open daily 10am to 4pm weekdays and 10am to 5pm weekends.
79 Main Western Road
(07) 5545 2609



8



Three Little Pigs

Bistro and Bar

Fine food and fabulous wine. Perfect place for relaxing and catching up with friends and family, or as a special treat.
13 Main Street
Nth Tamborine 07 5545 4484



7



St Bernards Hotel

Idyllic location with sweeping views, spectacular, fine dining for every occasion. Perfect for weddings, functions, conferences. Come and be greeted by our two St Bernards, and enjoy real country hospitality!
101 Alpine Terrace – 07 5545 1177



10



Club Tamborine

Visitors welcome

Your local on the Mountain: Full bar, Bistro, Gaming, Ubet, Keno, Fox Sports, regular live entertainment and bowls in a relaxed environment.
6-12 Beacon Road
(07) 5545 1308



9



Spare Part Solutions

Parts plus expert, personalised advice

We can supply parts for Automotive, 4x4, trucks & earthmoving, motorbikes, bicycles, general engineering, mowers, small machinery and more.
24 Main Street 07 5545 1988



12



Cauldron Estate & Distillery

Distillery – Vineyard – Bar – Events

Beautiful established vineyards and lush green meadows perfect for picnics, lawn games or kicking back for an afternoon of R&R. Enjoy our locally made spirits or drinks from the Cauldron Bar, relish our mountain-inspired 'Bar tucker' and picnic hampers, and even make your own bottle of gin in our distillery to take home.
89-123 Hartley Road, Tamborine Mountain Qld 4272
CauldronDistillery.com.au



14



El Burro Cantina

Come for the warmth, laughter and great MEXICAN FOOD!
• Fully licensed • Great for parties!
• Takeaway available

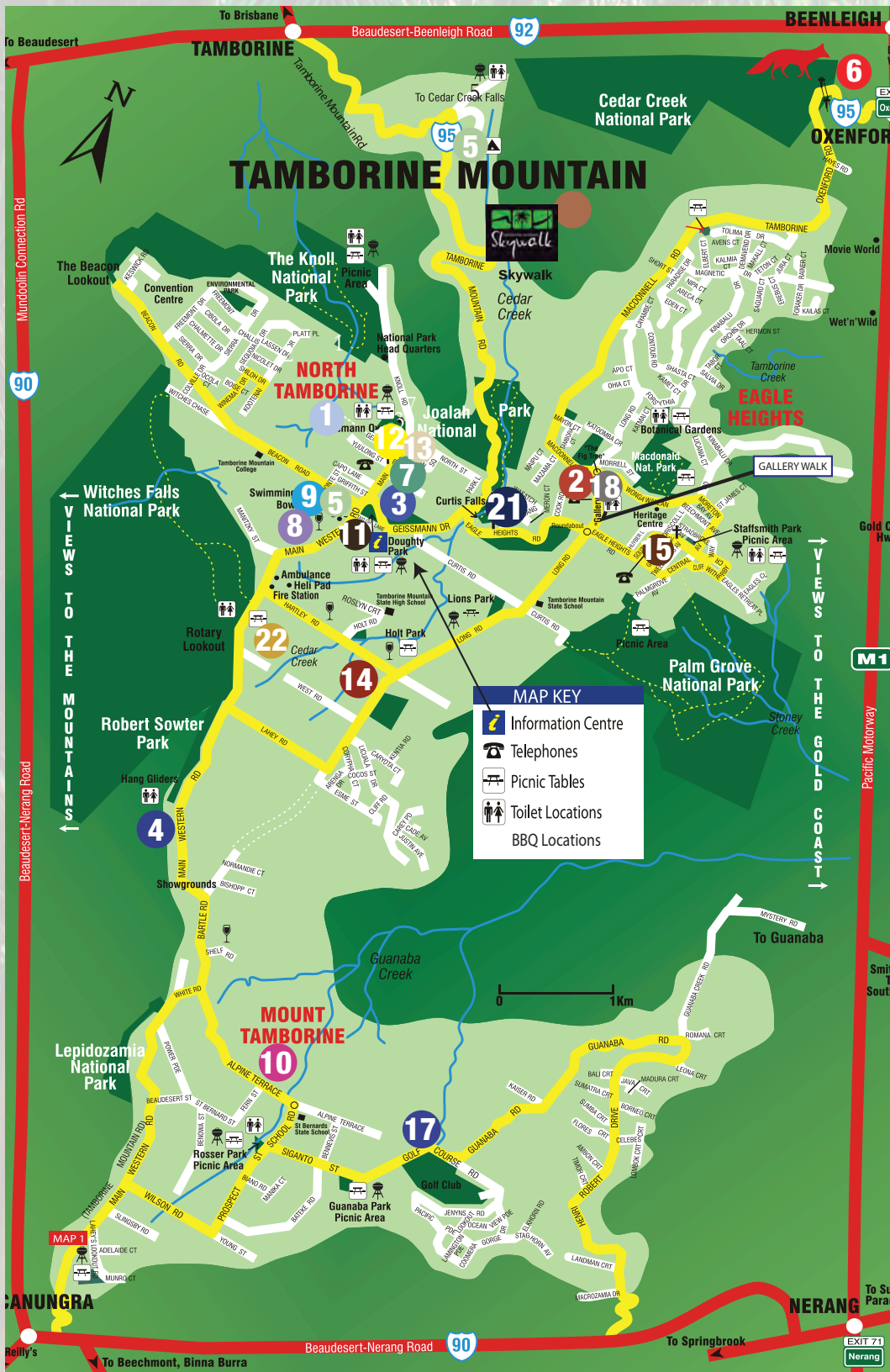
Flame Tree Plaza
16-20 Main Western Rd
North Tamborine 07 5545 4003



11



LOCAL DINING, SHOPPING AND SERVICES



Getaway Day Spa Tambores Mountain

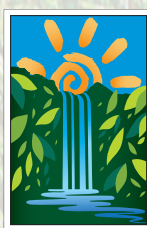
Open 5 Days

Monday, Tuesday,
Thursday – Saturday

Treatments available 9am – 5pm
Spa only available 5pm – 8pm

16 West Rd,
Tambores Mountain

07 5545 4751 **22**



Escape to TAMBORINE MOUNTAIN

your Gold Coast Hinterland

EAGLE HEIGHTS BAKERY

25 Southport Ave, Eagle Heights



Open 7 days - 9.30-5pm
(including public holidays)
14 year-old sourdough,
30 different breads & flours

5545 4011

Serving the community for 40 years

GOLF HEAVEN IN THE HINTERLAND Amazing location

Situated 500m above sea level,
overlooking the Gold Coast, this
acclaimed 9 hole, 18 tee golf
course is a delight to play any
time of the year.

ENJOY THE MOUNTAIN EXPERIENCE

5 Coomera Gorge Drive
Tambores Mountain QLD 4272 07 5545 1788



17



GERMAN CUCKOO CLOCK NEST

www.clocks.com.au

House of 1000 clocks
• Prestige Timepieces
• European Gift Articles

OPEN 7 DAYS 10AM - 4PM

143 Long Road, Tambores Mountain
☎ (07) 5545 1334 • info@clocks.com.au • www.clocks.com.au



Chris Sear Photography



Photos, TOP: Maddie Fowkes, Tamborine;
 ABOVE LEFT: Aleisha Lorensen, Gympie - winner of 13-U26 1*;
 ABOVE RIGHT: Frederick Reeve-Johnson, Moggill - winner of 13-U26 Preliminary;
 BELOW LEFT: Georgia Gent, Greenbank - winner of 13-U26 Introductory



STRONG SHOWING FROM LOCALS A HIGHLIGHT AT ONE DAY EVENT

Tamborine Pony Club recently hosted their annual Official and Unofficial One Day Event which is the Club's main event of the year. There were riders from 26 clubs, with the farthest north being from Gympie, farthest west from Toowoomba and the farthest south being from Bangalow, NSW. Some riders were after the elusive Q so they could qualify for the upcoming PCQ State Championships at Maryborough, while most were improving their skills within the three disciplines and enjoying their love of the sport.

The competition was well attended, with 89 horses. It is a busy day, with riders doing the three phases of the competition: dressage, cross-country and showjumping. The use of tablets in the dressage has certainly eased the pressure of those involved in scoring. However, the 22 cross-country stewards who recorded the results of each rider around the cross-country course used paper: it is hoped that we will be doing this electronically in the next year or two. The competition ran well, with riders presenting themselves punctually to gear check, prior to each phase. Additionally, there were no serious accidents.

The cross-country phase of eventing is meant to be the most influential phase and it delivered, with some riders having jumping and/or time faults and some, unfortunately, being eliminated. Still, that is the challenge of this discipline, and they will school their horses to improve for the next competition.

It was also good to see some younger unofficial riders competing and gaining experience and confidence. Additionally, the sight of the more experienced riders competing was a pleasure and something to aspire to.

Results were as follows:

- 13-U26Yrs 1*: 1st Aleisha Lorensen, Gympie; 2nd Georgia Wheatley, West Toowoomba
- 13-U26Yrs Preliminary: 1st Frederick Reeve-Johnson, Moggill
- 13-U26Yrs Introductory: 1st Georgia Gent, Greenbank; 2nd Georgia Wheatley, West Toowoomba; 3rd Sinead Stewart, Redlands; 4th Amali Trama, Yandina; 5th Georgia Cronin, Pomona
- 13-U26Yrs Pre-Introductory: 1st Leila Alexander, Greenbank; 2nd Georgia Laird, Buderim; 3rd Anika Green, Greenbank; 4th Nikita Stewart, Wynnum; 5th Lucy Young, Nerang
- 12Yrs & U Introductory: 1st Arianna Sing, Jimboomba; 2nd Jessica Burger, Moggill
- 12Yrs & U Pre-Introductory: 1st Scarlett Landman, Jimboomba; 2nd Cassidy Sullivan, Maroochy; 3rd Jasmyn Locke, Mudgeeraba; 4th Annabelle Brown, Bangalow; 5th Eleanor Gray, Redlands

- Seniors (Unofficial): 1st Teagan Barrett, Waterford; 2nd Katherine Bryant, Waterford; 3rd Suzanne Newman, Southside; 4th Jessica Whittle, Southside
- Beginners (Unofficial): 1st Priya Mohrholz, Tamborine; 2nd Estelle Synott, Fassifern; 3rd Jasmine Carmichael, Jimboomba; 4th Isla Taylor, Burpengary; 5th Matilda Winn, Tamborine.

Many thanks to our sponsors, Professionals Tamborine, Jimboomba Timbers, All Horses Vet and Aussie Blue Heeler Products, with the winner of each Official class winning a much-coveted Tamborine, and to Prydes' Easifeed and Stance Equitec for their donation of prizes. The grounds at Tamborine Pony Club were well presented. Thanks to all those who assisted with the organization and running of the day which went well.



Tamborine members Eliesha Saville and Priya Mohrholz

GET TO KNOW
your **MACULAR
DEGENERATION
STATUS.**

1 in 7 Australians over the age of 50 have early signs of macular degeneration.

Only a comprehensive eye test can accurately diagnose eye disease.

Book an eye test today!



 EyecarePlus®



DANIEL TUNE



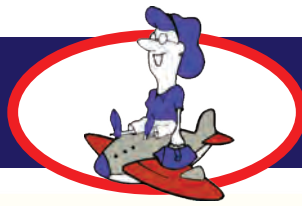
KATIE HENDERSON



MARK SMITH

Scenic Rim Optometrists
Beaudesert Medical Centre
47 William St, Beaudesert QLD
Phone: 5541 9510
scenicrimoptometrists.com





TRAVELLING PLACES *with Gina*

10 Fun facts about Australia

Check out these fun and interesting facts about Australia. How many did you know? How many have you been to?

1. The Australian Alps get more snow than the Swiss Alps. If the current cold snap is a sign of things to come, then perhaps we should be booking our snow escape now!
2. 90% of Australians live on the coast. No wonder we are water babies... It would take around 29 years to visit one new Aussie beach every day – there are 10,685 of them! When that cold wind blows do you head for Far North Queensland or Dark Mofo in Tasmania?
3. Tasmania has the cleanest air in the world. No wonder the winters are cold and sightings of the southern Aurora Australis are magical.
4. The Great Barrier Reef is the largest ecosystem in the world. It is made up of nearly 3,000 individual reefs and can be seen from space. Snorkelling is fantastic and last year in one day I saw harmless white pointed reef sharks, turtles, stingrays, coral and of course wonderfully coloured fish, including Nemo! Where? Lady Musgrave in the southern Reef and fabulous Lizard Island northeast of Cairns. Enjoy a reef escape on Lady Elliott or Orpheus Island off Townsville.
5. Australia has over 60 separate wine regions. Apart from our own Tamborine Mountain wineries, there are so many tempting cellar doors. I am writing from South Australia and nearby are the Adelaide Hills, The Barossa, McLaren Vale, and where we are heading: the Clare Valley.
6. K'Gari or Fraser Island is the largest sand island in the world. This World Heritage site has fantastic forests, an inland lake that

is a remarkable translucent blue, and if the tide is right you can head up the oceanside river area and see more stingrays than you can possibly imagine, before heading to the white silicon beach for a swim.



7. The Indian Pacific train has the longest straight section of train track in the world. No wonder the train stops to visit the sights, otherwise the passengers may all be rocked off to sleep.
8. 5 km of Uluru is underground. This extraordinary monolith in central Australia really must be visited by all of us. Don't miss nearby Kata Juta and beautiful Kings Canyon.
9. The first Police Force in Australia was made up of the most well-behaved convicts. I was recently in Sydney and took a guided walking tour around The Rocks – what fun tales Michael told while we learnt so much of Australia's early history.
10. Australia has 19 World Heritage Listed sites. How many have you visited?

Well, the borders are open and we are all travelling. Interestingly, according to Deloitte Economics about 40% of Australians are keen to head off overseas – and we are, international flights are busy. Most of us though are keen to stay close to home. If you are planning a trip near or far, I urge you to book sooner rather than later, I can't tell you how many people are leaving it until the last minute and finding out everything is full.

Contact Travelling Places PH: 07 5545 1600
E: travel@travellingplaces.com.au


Relationship Sanctuary
ON TAMBORINE

**COUNSELLING FOR INDIVIDUALS,
COUPLES & FAMILIES**



0401 517 243
Appointments in person or via video call.
Reasonable Rates.

linda@relationshipsanctuary.com.au

 **SCENIC RIM
MUSIC SCHOOL**

*invites you to experience our
brilliant concept in music tuition:*

PIANO STRINGS VOICE
on Tamborine Mountain

to register your interest:
07 5545 4700 or 0422 788 399

Ask us about our local 'do-re-we'
classes for Pre-schoolers.
www.scenic-rim-youth-choir.org



GRILL MASTERS, FOOD LOVERS AND CAPTAINS OF FLAVOUR

CHEF DYLAN'S
Gourmet Food Co.





www.gourmetfoodco.com.au


NEWHAVEN
FUNERALS, CREMATORIUM & MEMORIAL GARDENS

**The only purely 100%
Australian Funeral Company
and Crematorium**

**Winner Qld Seniors
Excellence Award**

Enquiries
Welcome **5593 4777**


Tamborine Mountain
OPTOMETRISTS

Optometrist

Call us now for a consultation
5545 0277
17-27 Main Western Rd, North Tamborine



**Residential aged care where you
are part of our family**

Beautiful views with a rural outlook, tranquil gardens, home-cooked meals, personalised 24/7 care, plenty of social activities and outings, and a family-like atmosphere, is what makes Beaumont Care Mount Tamborine Roslyn Lodge so special.

 **BEAUMONT CARE**
Warm-Hearted Care, Your Way

FIND OUT MORE TODAY - WE ARE HERE TO HELP
1300 217 336 | BEAUMONTCARE.COM.AU

FOOD FOR THOUGHT

with Chef Dylan Gittoes

www.gourmetfoodco.com.au



BABY SPINACH PAKORA

These vegetarian light bites are delightfully crispy and incredibly addictive. A traditional Indian snack or appetizer they can be shared as an entree before a nice curry, served as a canapé at a dinner party or even prepared as an after-school snack for hungry little people.

Not only do they always go down a treat but they're quick, easy, and cheap to make. Once you get the hang of them then you can really start to get creative. You can choose to add all sorts of ingredients into the batter such as steamed cauliflower, broccoli and potato, roasted eggplant or crispy onion.

Did you know? The word 'pakora' is derived from Sanskrit word 'pakvavata', a compound of root words 'pakva' meaning cooked and 'vata' meaning cooked in lumps.

Chef Dylan tips: Use a vegetable oil like canola, coconut or even avocado as they have a high smoke point. Other oils such as olive oil should not be heated in such a way and should instead be used for salad dressings or as a garnish. For perfectly crisp pakora cook over medium heat to ensure that the vegetables are well cooked. If the oil isn't hot enough, the pakora will absorb too much oil and be greasy. Alternatively, if the temperature is too high, the pakora will darken on the exterior but may not adequately cook on the inside. To check if the oil is ready for frying, add 1 to 2 small spoonfuls of batter. The batter should sizzle and come up to the surface quickly and your oil is hot enough to begin frying.

Agra, India 2013 Standing on the rooftop of our hotel, far from the crowded streets and chaos below, the cool air on my skin I feel a certain calm and peace as the twilight before darkness descends. In the distance the cloudless sky is turning a pale pink and orange after the sun creeps below a thick band of smog and dust. I gaze towards the marsh-lined foreground, and behold the jewel of Northern India, the majestic Taj Mahal. A sparkling ivory-white marble mausoleum nestled on the banks of the snaking Yamuna River.

Turning to my darling I say, "I can't wait to see you in your sari when we visit tomorrow". "Yes, I can't wait to wake up and see it up close in real life" she replies. "I still can't quite believe we're here. It seems so surreal" I say now pointing. "Just there. One of the seven wonders of the ancient world". "Marvellous, isn't it?" I

hear a voice say behind me and I turn and see Sanjib the young hotel manager smiling broadly showing off his iridescent smile. He continues "It's a declaration by the Emperor Shah Jahan to immortalise his most loved wife, Mumtaz Mahal. She died tragically during childbirth and it's a monument of his love, isn't it?" "It's an incredible story" I say impressed.

"Please follow me." he asks as he makes his way poolside, arriving with arms wide, he proudly states "Your table is ready" whilst simultaneously pulling out a chair each and gesturing for us to sit. "Will the Doctor and his wife be joining you this evening sir?" He asks. "Yes, but not for another half an hour" I reply. "No problem" says Sanjib wobbling his head from side to side in agreement. "May I suggest you start with a snack while you wait? It's one of our specialities, a plate of pakora perhaps?". "That sounds like a splendid idea Sanjib, thank you" I reply. "Can I also order two ice cold Cobras to accompany it?". "It will be my pleasure sir" as he turns to make his way back inside, head still wobbling.

Moments later he returns with the two beers and glasses, open and ready to pour at the table. "Enjoy sir, madam, I'll be back with the food in a moment, they are preparing it now" he winks and disappears. I hold up my beer and say "Cheers!". "To living the dream!" declares my sweetheart. The two glasses clink and whilst the ice-cold nectar of the gods quenches my thirst, I delight in seeing Sanjib coming towards our table. He's holding a plate of small spicy fritters accompanied by some irresistible Indian accompaniments: "You enjoy very much" he tells us.

The very best way to enjoy these pakora is fresh. I personally love them with my Shaka Zulu sauce or even tomato sauce, but any kind of chutney will add extra flavour.

Prep time 10 mins

Cook time 20 mins

Serves 2-4

Ingredients

- 1 cup besan flour
- 2 cups baby spinach leaves, chopped
- 1/2 onion, diced
- 2 tbs garam masala



- 1 tbs sesame seeds
- 1/2 cup water
- 1 tsp salt
- 1 ltr Canola oil (for deep frying)
- 2 tbsps Shaka Zulu sauce*

*Chef Dylan's Gourmet Food Co. Shaka Zulu peri peri sauce

Making the batter

1. Rinse the spinach leaves very well. Drain the excess water in a colander or strainer. Finely chop the spinach leaves.
2. In a bowl add the finely chopped spinach leaves and chopped onions.
3. Add the garam masala and the sesame seeds.
4. Next add besan and salt to taste.
5. Mix all the ingredients very well and set aside for 5 minutes.
6. First add 1/2 cup of water in parts. Remember the spinach and onions will leave water once they are mixed with salt and the spice powders. So be careful while adding water.
7. If the batter is still thick, then add some more water.
8. Mix very well. Add water as required to make a medium consistency batter.

Frying

1. Heat oil in a large pot. When the oil is medium hot, drop spoonfuls of the pakora batter in the oil (to test).
2. Fry the pakora in batches until they become pale golden. Then turn over and fry the other side.
3. Turn over a couple of times and fry all the pakora until they are crisp and golden.
4. Remove them with a slotted spoon. Drain them on kitchen paper towels to remove extra oil.

Serve up with a bowl of dipping sauce. Use my Shaka Zulu, an Indian chutney and yoghurt or any sauce of your choice.

NON-EMERGENCY MEDICAL TRANSPORT-SUBSIDY, PART 2 (of 3)

In the previous article in this series of three information was given about accessing support for transport to medical facilities off the mountain. An overview is provided in the diagram. This week the Ambulance service and the Patient Travel Subsidy Scheme (PTSS) are explained. Information was provided by Dr. Jan Zomerdijk and the Rotary.

Queensland Ambulance Service

The ambulance might be of support, thanks to a scheme called 'Patient Transport Services' (PTS). To use the Ambulance service, you have to meet at least one of the following criteria:

1. you need stretcher transport
2. you need active management or monitoring while travelling
3. you have a condition that would cause you embarrassment or be of serious concern to other people on public transport.

Examples of people who could be eligible are chemotherapy, radiotherapy or other oncology patients. Also, patients who need renal dialysis, might use this service.

Patients with physical disabilities might fit the criteria, but most of them have access to subsidised travel arrangements via NDIS or Taxi Subsidy Scheme.

In addition to these groups of patients, medical practitioners can assess that patients need this form of transport, on a case-by-case basis. The criteria are also accessible at the Ambulance website: www.ambulance.qld.gov.au/transport_eligibility.html

In case you are using the Ambulance service, it is advised that you are ready in time for pick up and that you don't have luggage over 10kg. For non-emergency transport, you always need to have an authorised transport request, signed by your doctor. The service is free of charge.

Patient Travel Subsidy Scheme (PTSS).

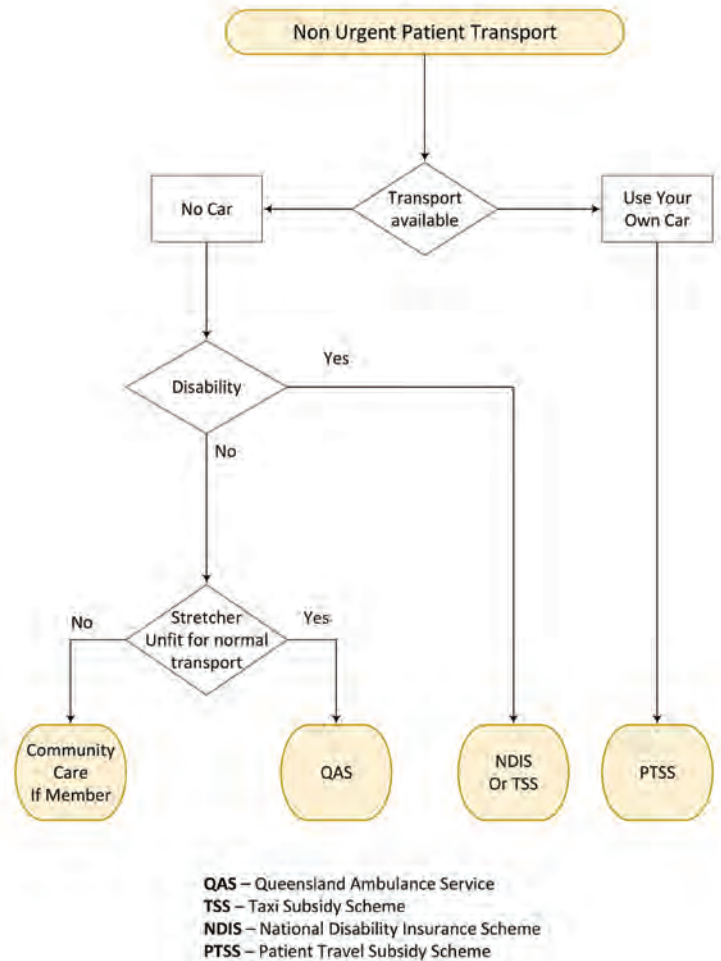
Patients from Tamborine Mountain can apply for PTSS to travel to specialist medical services not available at their local public hospital or health facility. But the process is not easy. The bad news is that the rules and regulations are so complicated that it is impossible to summarize them in a newspaper article. The good news is, on the other hand, that it is all available at the website of Queensland Health (www.qld.gov.au/health/services/travel/subsidies) and that the Beaudesert Hospital can inform you as well. The essence of the Scheme is that it assists patients with travel and accommodation costs of accessing specialist

medical services in the nearest public hospital. In some cases, subsidies can also apply for visiting private medical specialists. If you are eligible the subsidy is normally \$0.30 per kilometre.

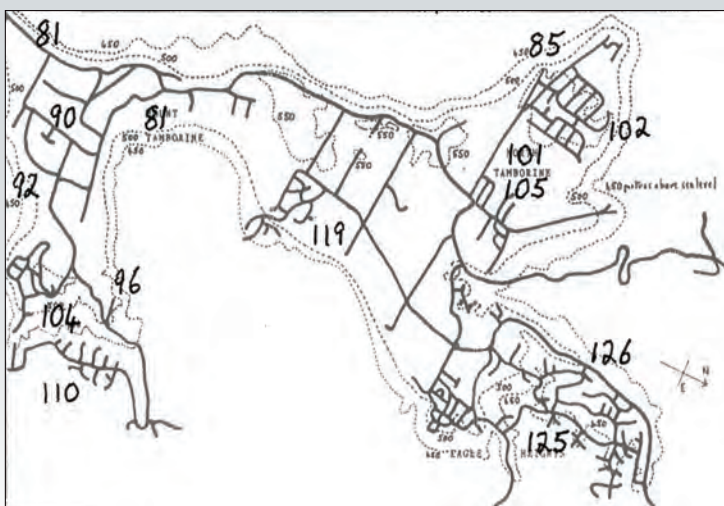
The easiest way to find out about your eligibility is to call Rachel Reeves or Pauline Wesley at the Beaudesert Hospital, even if you inquire about a service at the Gold Coast. All requests from Tamborine Mountain are processed in the Beaudesert Hospital. Email bdhpatienttravel@health.qld.gov.au, phone 07-5541-9218 (direct) or 5541-9111.

In the next article about Non-Emergency Medical Transport in next week's *Scenic News*, support for accommodation costs, and subsidies for the use of taxi services will be explained.

Jaap Vogel



TAMBORINE MOUNTAIN RAINFALL



APRIL 2022

Well, contrary to expectations and my report last month, we're still here and will be for the next couple of months.

Rainfall for April for Fern St was 89.5mm which lies between the expected of 82mm and the average of 130mm. The chart shows rather higher falls to the east and north.

Rainfalls recorded on the 8th, 9th & 10th were due to convergence between high pressure from a southern high and the low pressure off the coast being the remains of a cyclone drifting south off shore. Showery conditions continued for a week from the east. Then heavier rain fell for 4 days. It was also due to convergence but this time between the SE ridge of high pressure and the inland heat low over the north of the continent.

Light showers continued to the end of the month probably due to the environment of SE corner of Queensland being so wet that relative humidity was always only a few degrees above the dew point. Any cooling then produced cloud and rain.

Mike Russell 5545 3601

Bookshop & Art Gallery - Under the Greenwood Tree. Open 5 days 10 - 5. Closed Tuesday and Thursday Home deliveries 7 days. Book orders welcomed. 92 Main Western Rd Nth Tamb Ph.0424 586 066 P

Gardening, Mowing, Property Maintenance by friendly, reliable long-term mountain resident. No.1 Property Maintenance. Call Phil 0476 257 045 P

Music Lessons - Bass, guitar, piano. All ages. Have fun & online lessons available now. Ph Craig or text 0478 075 642 P

GRAPHICS & TUITION

GRAPHIC DESIGN/ILLUSTRATION SERVICE & TUTORING



GRAPHICS SERVICE: Business Startup – logos, business cards, letterheads, leaflets, stickers, etc. Quotes for design and printing (**all printing done locally by Coomera Print Hub**)

TUTORING & WORKSHOPS: Children's illustration/cartooning workshops. Tutoring graphic design working with Adobe Illustrator and Photoshop.

INFO: Call Heather on 0415 549 522 or email heather.dale@patchworkdog.com Examples on www.patchworkdog.com.



- Get your ad in front of more than 20,000 readers each week
- Free online exposure, and online advertising opportunities

Call or email

0417 238 238

advertising@scenicnews.com.au



SIGNS

GARAGE SALE SIGNS

Stand out from the crowd with attractive, professional-looking signs for YOUR Garage Sale. (spike/stand included) Signs are free to use, but require a \$10 deposit per sign (refunded when you return them). **Please inquire on 5545 5000.**

Please note: 2 days' notice required

POSITION VACANT

Casual Shop Assistant for busy Bakery, please message Eagle Heights Bakery on [facebook](https://www.facebook.com/eagleheightsbakery)



Yoga Under the Bodhi Tree – LIVE YOGA CLASSES: Mon 9.30am Moriarty CC, Canungra. Mon 6pm Canungra Wellness, Canungra. **Tues 9.30am and Sat 9.00am** Zamia Theatre, Main Rd, Tamborine Mountain. **Wed 6pm** Creative Art Centre, Wongawallan Rd, Tamborine Mountain. **ONLINE YOGA CLASSES:** **Tues 6pm, Wed 9.30am.** For Online Classes text or email me: Margot **0428 137 391** or yogaunderthebodhitree@outlook.com. I will send you an email with a link. Very simple, very low tech. Come and join us! Hatha, Nada and Tantra Yoga. Contact: Margot Y.A. (Australia) **0428 137 391**. Transform your Life with Yoga.

TRIVIA

Mixed Bag



1. Dzongkha, Nepali and Assamese are the official languages of which small Asian country?
2. What is the largest island in the Caribbean?
3. In which year did Damon Hill win the Formula One World Championship?
4. Morpheus was the Greek god of what?
5. What is the technical medical term for blood poisoning?
6. Lambeth Palace is the official residence of which church leader?
7. Which acid is secreted by certain kinds of ant?
8. In which country is the Plain of Sharon?
9. Which South American capital city's name translates as 'I see the mountain'?
10. What was the name of the 'wonder horse' who had a TV series in the 1950s?
11. Psychiatrist Carl Jung was a native of which country?

Answers page 27

POSITION VACANT

Full-time Casual Driver required for Mail delivery run in Tamborine area 4270. Full training provided, a vehicle and fuel card to successful applicant, high vis uniform once a qualifying period has been reached. Reliable fit person with a responsible attitude sought to join our team of long serving drivers.

Call Ian on 0428 731 163 or Email brief Resumé to hnbagency@bigpond.com.

BUSINESS DIRECTORY – WHO TO CALL

ACCOUNTING

HALL HANNEFORD
 CHARTERED ACCOUNTANTS
TAXATION / BAS RETURNS
BUSINESS ADVICE • STRUCTURE SETUPS
SELF-MANAGED SUPERANNUATION
TAX PLANNING • BOOKKEEPING
 Shop 3/15 Main Western Road,
 Tamborine Mountain
 PH: 07 5545 2588
 www.accountingonthemountain.com.au

Eagle Taxation
 Accounting and Taxation Services; Tax Returns;
 BAS Statements; DIY Super and Auditing; ABN
 Applications; Tax Planning and Structure
 Advice; Non-Profit and Business Audits;
 End-of-Life Planning and Document Preparation;
 Commercial Agreements; Xero Cloud Accounting
36 Southport Ave, Eagle Heights
 ☎ (07) 5545 4458
 ✉ office@eagletax.com.au

Lakehouse Accounting
 Let's talk about your business and tax concerns!
 Call Noel 0487 999 035
 for an appointment or email
 noel@lakehouseaccounting.com.au
 20 Bateke Road
 Tamborine Mountain
 QLD 4272

AIR CONDITIONING & REFRIGERATION

+45 Years
TAMES
TAMBORINE MOUNTAIN
ELECTRICAL SERVICES
 Air Conditioning Service & Breakdown
 Sales and Installations
 at Competitive Pricing
Call Now 07 5545 7777
Servicing our customers for 45+ years
 Licence No. 69488 Arctick AU3560

EMIRG SERVICES
AIR CONDITIONING
COMMERCIAL REFRIGERATION
& MECHANICAL SERVICES
BRENDAN GRIMES 0419 009 643
 brendan@emirgservices.com.au emirgservices.com.au

Next ISSUE:
MAY 19, 2022

ARBORIST

MOUNTAIN TREES
NICK ROUTLEDGE
 0438 176 775
 Qualified Arborist
 mountaintrees@live.com.au
Professional Tree Services

AUTOMOTIVE REPAIRS

TAMBORINE MOUNTAIN
Auto Clinic
Jason Bowles

- Logbook Servicing All Makes Incl Euro
- Specialist in Brakes
- All Mechanical Repairs
- Small Electrical Repairs
- Sublet R.W.C & Air Conditioning

41 Main St Nth Tamborine Ph: 5545 1214

On The Road EST. 2002
AUTOMOTIVE REPAIRS

- Mobile Repairs, Logbooks & Servicing
- RWC Safety & LPG certificates
- Cars, Trucks, Trailers & Floats, Farm Eq't
- Light & Heavy Diesel Repairs
- COI & Measure Ups, Mod. Plates
- Scan Tool Diagnostics

FULLY EQUIPPED WORKSHOP AT TAMBORINE
SEAN 0409 291 053
 ACN 111 041 751

BLINDS & CURTAINS

TAMBORINE BLINDS
AND AWNINGS
 ✓ Awnings ✓ Blinds
 ✓ Security & Flyscreens
 ✓ 25 Years Industry Experience
RICHARD m: 0405 631 655
KENT h: 5545 0057

BOOKKEEPING

Innovative BEAN COUNTING
 BAS and Bookkeeping Services
Focus on your business while we count your beans!
 XERO & MYOB Certified Advisor, QuickBooks, Receipt Bank & Hubdoc partnered. 20 Years of experience!
 E: info@ibcounting.com.au
 W: www.ibcounting.com.au
 P: 07 5543 4830
 M: 0400 395 805
 AUSTRALIAN BOOKKEEPERS NETWORK AUSTRALIAN BOOKKEEPERS ASSOCIATION
 BAS agent 25894697

BOOKSHOPS

CANUNGRA BOOKS & ART
Vintage to Now

- Quality second-hand books
- New books by local authors
- Vintage clothing and records
- Gifts and cards

We buy quality books and records
 Open daily 9.30am to 4pm
 6 Kidston St, Canungra Enquiries: 0418 792 161
 E: admin@canungrabooksandart.com.au
 Web: canungrabooksandart.com.au
 canungrabooksandart

BRICKLAYING

HOPE BRICKLAYING
 Brick and Block Work • Cottage

- Commercial Construction
- Retaining Walls and Fences

 Tamborine Local
 QBCC Lic 1302284
0449 622 639
 Jhbricklaying@hotmail.com

BUILDERS

HAYWARD BUILT
 BUILT TO LAST
 Decks | Pergolas
 Bathrooms | Extensions
 External & Internal Doors
 Renovations | Pool Areas
0421 199 135
 QBCC: 15203283

CRAMP BUILDERS Pty Ltd
 Architectural Homes Renovations Extensions Maintenance Commercial Works
 Nick Cramp - 0437 017 297
 Rick Cramp - 0407 701 875
 E: info@crampbuilders.com.au
 ACN 137 984 715 QBCC Lic. 1177904

Want to get YOUR business noticed?
0417 238 238
 advertising@scenicnews.com.au

BUSINESS DIRECTORY – WHO TO CALL

BUILDERS



All Aspects Of
Building & Renovations

- RENOVATION SPECIALIST
- BATHROOMS
- KITCHENS
- FULL INTERNAL

Edward Odisho
mob: 0418 788 029

QBCC LIC - ISO77381
email: totalbuildingi@gmail.com

BUILDING DESIGN



CAMERON
DESIGN LOGIC

Adam Cameron
0414 807 265
camdunpl@gmail.com

QBCC 15189980

**BUILDING DESIGN
& PLAN DRAFTING** 

CAR DETAILING

CAR DETAILING – MOBILE SERVICE
Ian Garvie
JP (Qual)

Qld Water Comm. &
Commerce Qld
REGIST. WATER EFFICIENT
OPERATOR No. 2238

0409 962 348
Health Regulations strictly adhered to



CAR REMOVAL

FREE CAR REMOVAL
Paying for some cars and 4x4.
Can ring for an obligation-free
quote on your car

0438 761 669

CHIMNEY CLEANING

SOOTY'S CHIMNEY CLEANING SERVICE
Dust-free cleaning - all areas

 sootyschimney@optusnet.com.au
www.sootyschimneycleaning.com.au

0438 733 579

CLEANING

Eagle Heights Cleaning Services
Commercial Cleaning

House Cleaning Weekly/Fortnightly

Bond Cleans

MOBILE 0400452054

Cleaning The Mountain since 2001

Next deadline:
MAY 13, 2022

Colour listings
from \$12/week

COMPUTERS



MasterCard
VISA
e
efpos

GRANT
I.T. SERVICES

0410 559 136
CAMRON GRANT
grant.it.services@gmail.com

Professional & reliable
ON-SITE TECH SERVICE
for your home or business

PC, Apple or Smart Devices - Repairs - Installations -
Upgrades - Networking - Virus Removal & More

LOCAL & SAME DAY RESPONSE



COMPUTEX
SOLUTIONS PTY LTD

Onsite in your Home or Business - Installations - Repairs
Upgrades - Virus Removal - Networking - Backups & more
Supporting PCs / Macs / Tablets / Smartphones

call Drew Haldane **0414 014 054**
For all your computer needs


COUNSELLING

Tamborine Mountain Counselling
5545 1245

Principal Counsellor: David Mackay

- Personal Issues
- Anxiety
- Self-Esteem
- Grief
- Adolescents/Youth
- Family

Private Health Fund Approved

 **MEMBER OF** **ACA** AUSTRALIAN COUNSELLING ASSOCIATION

Blue Card
ABN 79 130 029 431
ACA member 20380

DENTAL PRACTICE



DENTURE CLINIC



Joe Russell
Registered Dental Prosthetist

OPEN

for all your denture
requirements

www.tamborinedentures.com

5545 3128

Mon-Fri Every week (excl. holidays)
After-hours appointments available

Shop 10/17 Southport Ave
Tamborine Mountain

DRESSMAKING

JULIA SINGH
FASHION AND TEXTILE DESIGNER

- DRESSMAKING
- PATTERNMAKING
- WORKSHOPS
- ALTERATIONS

TAMBORINE MOUNTAIN
0467 398 872
HSINGH@WESTNET.COM.AU



DRIVING LESSONS

TAMBORINE DRIVING SCHOOL
Auto and Manual

L **0431 857 356**

Nicola Durkan
Qualified Driving Instructor



Free Keys2drive lesson
www.tamborinedrivingschool.com

RED LINE 

TAMBORINE MTN DRIVING SCHOOL

Accredited Driving Instructor
Long time local resident

Phone Grant 0478 225 853
Member Aust Driver Training Association

Suzuki Swift
Auto

EARTH MOVING

FREE QUOTE CALL
0413 941 172

30 YEARS' EXPERIENCE
IN ALL ASPECTS OF
EARTHMOVING



DANNY'S DIGGERS
Bobcat & Excavator Hire

GRAYS EARTHWORX

5 tonne Excavator, 10 m² Tipper

All Excavations, Postholes,
Rock Walls, Sand, Soil, Gravel

Reliable - Good Rates

PH: GRAY 0431 243 810



Scenic News

- Get your ad in front of
more than 20,000
readers each week
- Free online exposure,
and online advertising
opportunities

Call or email
0417 238 238
advertising@scenicnews.com.au

BUSINESS DIRECTORY – WHO TO CALL

ELECTRICAL

Bob's Services

Gary Hamblin
Licenced Electrician
25 Years Experience

0413 278 743
thezoo5@bigpond.com



Lic. No. 71041



TAMBORINE MOUNTAIN ELECTRICAL SERVICES

Competitive Pricing and
Guaranteed Work from your
local Master Electricians

Call Now 07 5545 7777

Servicing our customers for 45+ years

Licence No. 69488

Arctick AU3560



ALL YOUR ELECTRICAL NEEDS FOR
RESIDENTIAL & COMMERCIAL
~ COMPETITIVE PRICING ~
Electricians that provide fast, tidy,
professional service

- New builds
- Renovations
- Upgrades
- Air conditioning
Installations

Call us on 1300 153 726
admin@knightsselectrical.net.au

Knights Electrical Contracting (QLD) P/L * Licence No: 65556 (QLD)

FIVE STAR SECURITY & ELECTRICAL

Lic. No. 59907

ELECTRICAL CONTRACTORS

- Domestic • Commercial • Repairs
- Renovations • Upgrades

Phone: 0418 715 380

SKS Electrical Pty Ltd

Lic No. 73960

Stuart Spalding

0413 435 708

skselectrical11@hotmail.com



Michael Ruttie
0422 882 719
Ruttie@interlectrics.com
Lic:100994

Electrical Installations
New & Renovation
Phone and Data
Fair Prices &
Professional Service
Local to the Mountain

FIREWOOD

TAMBORINE MT FIREWOOD SUPPLIES

- * FREE DELIVERY
- * SEASONED TIMBER
- * PROMPT SERVICE

PH: 0418 980 862

Adam



TD McNEILL QUALITY FIREWOOD

Split, Dry 100% Ironbark by the Tonne
18 Years in Business Locally

When Only the Best Quality will Do!

Phone Trent 0457 244 525

Aged Western Red Ironbark

From \$180 m³

Phone Wayne Kiehne 0419 768 959

FITNESS & GYM

JOIN YOUR LOCAL GYM ACCESS AVAILABLE 24/7
Personal Training & Classes
Follow Facebook@MainFitness
OR www.mainfitness.com.au
8/39 Main St North Tamborine
5545 4774 24/7
MAINFITNESS

TAMBORINE MOUNTAIN TRIATHLON CLUB 24/7
Community Gym
for all levels of fitness
Contact Natasha if you are interested in joining.
16 BEACON ROAD, TAMBORINE MOUNTAIN Mobile: 0408 739 844

GARAGE DOORS & GATES

Adept Garage Doors & Gates
SPECIALISING IN:
Servicing, Repairs, Maintenance,
Installation, Automation & Remotes.
Quality Service, Workmanship & Products
24/7 Emergency Repairs
Ph: 0401 363 757
www.adeptgaragedoors.com.au

GAS SUPPLIES



Joyan Household Gas

YOUR FRIENDLY LOCAL SUPPLIER

We supply and deliver household gas cylinders
No Rental Charges No Lock In Contracts
No Delivery Fee

Call John 0424 486 986

HOUSEHOLD GAS SUPPLIES

Fast.....

Reliable.....

Local.....

PLUSGAS
.com.au

5548 7100

Locally owned and operated

GUARANTEED SAVINGS
when changing from another supplier



HAIR & BEAUTY

Create The Image

HAIR & BEAUTY

0427 980 450

34 Christie Street, Canungra



Hair by Melissa

- LADIES • MENS • CHILDREN
- Cutting • Colouring • Styling

Complete In Home Hair Service
Stuck Indoors - I Come to You

0416 825 465

HANDYMAN

Craig the Handyman

For any odd jobs you have wanted done

- Affordable • Reliable • Quality work
- 30 Years Experience

Not your average handyman!

0478 075 642



HARDWARE

TAMBORINE VILLAGE TRADERS
HARDWARE – PLUMBING – PRODUCE
SADDLERY – GARDENING – PAINT
M-F 7.30 to 5.30 Sat 7.30 to 3pm Sun 7.30 to 1pm

Ph: 07 5543 8822
Fax: 07 5543 8866
Email: christina@tamborinetraders.com.au

Christina
5 Leach Road
Tamborine QLD 4270

HOME & GIFTWARE

lux & gather

Luxury home & giftware boutique

07 5545 0804

Monday - Friday 9 – 3
Saturday 9 – 3
Sunday 9 – 2

Shop 3, 14 Main Western Road,
Tamborine Mountain

LANDSCAPING & MOWING



Hartley Road
Landscaping Supplies
& Equipment Hire

07 5545 3390

FIREWOOD FOR SALE
New on the yard – Sold per bobcat scoop
STONES | GRASS | ROCKS | SOIL | MULCH
www.hartleyroadlandscaping.com.au

Affinity Landscapes

Is your garden ready for spring & summer entertaining?

Would you like to attract wildlife?

Do you want envious friends & neighbours?

Local horticulturalist & lic'd structural landscaper

- Design • Water features • Stonework • Planting
- Paving & retaining walls
- Contemporary, native & formal gardens

MOB: 0411 805 589 – QBCC1115404

Dependable Mowing & Kanga Mini Loader Hire

We've Got Your Property Covered!
Small & Large Acreage Mowing
Zero Turn Catching/Mulching Mower
4WD & 6WD Steep Slope Mowers/Slashers
Professional Lawns Maintenance,
Topsoil Dressing, Aerating, Dethatching,
Over Seeding, Fertilising, Spraying,
Back Yard Earthworks, Trenches, Soil &
Mulch Shifting, Post Holes, Landscaping

Phone/Text Ash Fully insured
0430 110 055



TAMBORINE TURF
(Est. 1966)
Landscaper & Laying Service Available

Growers & Suppliers of:

- Wintergreen Couch • Buffalo Grass • Kikuyu Turf

Farm Pick Up or Delivered – Inspections Invited!
(Weekend pickup must be ordered by noon Friday)
tamborineturf.com.au • tjyore@optusnet.com.au

Tom 07 5543 6133 • Office 0423 924 692

Next ISSUE:
MAY 19,
2022

Next DEADLINE: MAY 13

MOWING & GARDENING

GREENWOOD PROPERTY MAINTENANCE

- All lawns – small blocks to acreage
- Hedge trimming
- Brushcutting
- Rubbish removal
- Gutter cleaning etc



PHONE JOHN 0431 953 126

PAINTING



ALL SURFACE PAINTING P/L

- Re-paint Specialists
- Specialise in Timber Restoration
- New Projects Welcome

JOHN RYAN
M: 0414 377 474
E: allsurfacepainting1@gmail.com



VINCENT'S PAINTING SERVICES

- Interior/Exterior Painting
- Roofs & Decks

QBCC 1090914
5545 0098 or 0409 879 184

Painting Contractors

RESIDENTIAL & COMMERCIAL
Gary 0438 175 069
Email: garywferigo@hotmail.com
FREE QUOTES • PROMPT SERVICE

QBCC 1001805



Scenic News

- Get your ad in front of more than 20,000 readers each week
- Free online exposure, and online advertising opportunities

Call or email
0417 238 238
advertising@scenicnews.com.au

PAINTING



Lowrie Painters
QBCC: 1024341
Interior – Exterior
Quality finish – Mountain Local

Call Matt for a competitive quote

0422 948 753

lowriepainters@gmail.com painter-goldcoast.com.au

PANEL BEATER

ALLAN HAYES
TAMBORINE MOUNTAIN
PANEL & PAINT

Mob: 0419 735 874
Private and insurance work
Total Car Care

FREE QUOTES PICK UP DELIVERY



WINDSCREENS BRAKES RUST FOR R.W.C.

1 HAYES RD
OFF TAMBORINE OXFENFORD RD

PEST CONTROL



EAST COAST™
building & pest

Your local, trusted, family owned and operated team

- Building and Pest Inspections
- Termite Inspections
- Termite Management
- Pest Control



1300 910 917

admin@eastcoastbuildingandpest.com.au
www.eastcoastbuildingandpest.com.au

ANSWERS TO TRIVIA
FROM PAGE 23

1 Bhutan, 2 Cuba, 3 1996,
4 Dreams, 5 Septicaemia,
6 Archbishop of Canterbury,
7 Formic, 8 Israel,
9 Montevideo,
10 Champion,
11 Switzerland.

BUSINESS DIRECTORY – WHO TO CALL

PEST CONTROL

Safe Effective Treatment of ALL PESTS

Termite inspections using the latest technologies: Thermal Image Camera, Termatrac etc., and all aspects of Termite prevention and eradication.



END-A-PEST

Exterminators

Over 30 Years' Exp.

Fully Licenced & Insured QBCC 15023710

5545 3957 or 0407 590 790

PHYSIOTHERAPY



Gary Brooks

tel: 07 5545 0500

16-18 Main Western Rd, Tamborine Mountain

PHYSIQUE

PHYSIOTHERAPY



2/10 Main Street, PO Box 102
North Tamborine, QLD 4272

5545 1133

www.physiquehealth.com.au

PICTURE FRAMING & PRINTING

vikingframer.com



Picture Framing • Art Gallery • Printing
vikingframer.com

(07) 5545 2402 0449 250 545

PLUMBING

ALL-WAYS PLUMBING Lic No 745184

Specialising in:-

- Maintenance
- Plumbing
- Roofing
- Draining
- Gasfitting

Ph: Dave Angel at Nth Tamborine
Ph: 5545 2369 all hours
Mobile No: 0419 677 008

COBRA PLUMBING & Drain Clearing P/L

QBCC 73572

Maintenance Services
Renovations • No Job Too Small

Mark: 0419 655 802 Local Resident

Want to get YOUR
business noticed?

0417 238 238

advertising@scenicnews.com.au

PLUMBING

Hot Water Install & Repairs Solar, Electric & Gas.

Trust the family owned local
Best service & price!

Ph: 5539 6820



**TODD'S
PLUMBING
& ELECTRICAL**

www.toddsplumbing.com.au

PUMPS



For sales, service
& advice
you can trust ...

House | Filtration | Irrigation | Bore

PHONE 5545 0555 and 5545 4100

We supply & repair PUMPS

- Bore pumps • House Pumps
 - Pool Pumps • Grey-water Pumps
- IRRIGATION & WATER SPECIALISTS

Sales & service
38 Main St, Nth Tamborine
(2 doors from POST OFFICE)

AJ's Pump Repairs and Services

ABN 63 677 153 402



Joe: 0434 965 349

joesvet@bigpond.net.au

111 Boomerang Road
Tamborine QLD 4270

REAL ESTATE



Charmaine Wigglesworth
0460 444 100

charmaine.wigglesworth@professionals.com.au

5543 6444 2205 Beaudesert-Beenleigh Rd, Tamborine
www.ProfessionalsTamborine.com.au

REAL ESTATE



Team – Heleen & Ton

0424 591 011 0424 591 012

heleen@Professionals.com.au Ton.Wolf@Professionals.com.au

5545 5000, 10-12 Main St, Tamborine Mountain
www.ProfessionalsTamborineMountain.com.au



Linda Hogan

0414 300 558

linda.hogan@professionals.com.au

5545 5000 10-12 Main Street, Tamborine Mountain
5543 6444 2205 Beaudesert-Beenleigh Rd, Tamborine



SARAH

AMY

SHANELLE



0429 001 013 0474 315 000 0447 660 080
Sarah Lewis Amy Orr Shanelle Hadfield

10 - 12 Main Street, Tamborine Mountain, 4272
www.ProfessionalsTamborineMountain.com.au

2205 Beaudesert-Beenleigh Road, Tamborine, 4270
www.ProfessionalsTamborine.com.au

07 5545 4000 Mountain Office 07 5543 6444 Tamborine Office

Property Management
The best team to manage your investment



Elizabeth Stirling

0400 449 978

elizabeth.stirling@professionals.com.au

5545 5000 10-12 Main Street, Tamborine Mountain
www.ProfessionalsTamborineMountain.com.au

REAL ESTATE

 Professionals Serendipity Real Estate



Diane Pihl
0424 653 316

diane.pihl@professionalsserendipity.com.au

5545 5000 10-12 Main Street, Tamborine Mountain
www.ProfessionalsSerendipityRealEstate.com.au

 Venter Property



Warren Venter
0432 606 719

warren@venterproperty.com.au

Making real estate easy

Cherie Todd
0411 466 442



RayWhite

Shop 6,
9-13 Main Western Rd
North Tamborine
07 5545 1303

cherie.todd@raywhite.com
www.raywhiteruraltamborinemountain.com.au

 EXCLUSIVE SALE PROPERTIES



Thinking of
selling?
call me

Now

KONRAD GALLAHER
0435 99 66 44

LOCAL Independent Agent

TESTIMONIAL

WE ARE EXTREMELY GRATEFUL FOR HIS EXCELLENT WORK AND STRONGLY RECOMMEND KONRAD, LEWIS AND LIZ.

30 + YEARS LOCAL RESIDENT
30 + YEARS SALES EXPERIENCE

konrad@exclusivesale.com.au
exclusivesale.com.au

REAL ESTATE

B

BARTLE REAL ESTATE



Louis Bartle
0491 642 980

Jodi Meynell
0412 554 274

louis@bartlerealestate.com.au
jodi@bartlerealestate.com.au

bartlerealestate.com.au

Harcourts Scenic

Scenic Rim Real Estate

scenic.harcourts.com.au
tamborine@harcourts.com.au

07 5543 8525

It is about people,
it is all about you.

RENTALS – HOLIDAY

The Scenic Collection

The Scenic Collection has a selection of the best holiday homes on Tamborine Mountain

Browse all our great offers & accommodation & book online, or call Amy.

07 5545 4000

www.TheScenicCollection.com.au

 Scenic News

- Get your ad in front of more than 20,000 readers each week
- Free online exposure, and online advertising opportunities

0417 238 238

advertising@scenicnews.com.au

ROOFING

Martin Foster

QBCC 57756

Leak Specialists
FOSTERS ROOFING & GUTTERING

Your local Tamborine roofer. Over 35 Years' Exp.
Roofing, Guttering, Leaf Guard, Whirlybirds
Leaks and Maintenance

Ph 0417 748 073 Office 5543 8310
fostersroofingptylt@bigpond.com

AGENCY UNO PTY LTD - Builder
LIC # QBCC 1203987

Repairs and replacement of roof, gutter, downpipes and timber work.
Advise and quote.

Call: **Simon**
Mb: **0422 532 397**

SEPTIC TANK CLEANING

Septic Solutions QLD
Locally Owned & Operated

Pumping & Cleaning of
Septic, Sullage and Holding Tanks
Grease Traps & Sewerage Treatment Plants

PH: **Tony 0439 430 242**

After hrs: **07 5543 0242**

POWER PUMPING
DOMESTIC SERVICES

Treatment Plants Septic Tanks
Sullage Tank Grease Traps
Servicing & Repairs

T 55452692 M 0408633260

www.yoursepticssystem.com.au

SIGNWRITING & AUTO ART

Auto Art Signs
SHOPFRONTS
CAR, TRUCK, BOAT WRAPPING
VEHICLE SIGNS
LIGHTBOXES
BANNERS
A-FRAMES
DIGITAL PRINTING
BUSINESS CARDS
FLYERS etc
DESIGN

Call Chris
0410 058 204

autoartsigns@bigpond.com

GOLD COAST - MT TAMBORINE - CANUNGRA - BEAUDESERT

SKIP HIRE

GREENSKIPS



formerly Tamborine Skips
(still under same ownership/team)

2-12m³ (cubed) bins
available, domestic or commercial

Book online or phone: **0421 507 303**

greenskipsqld@outlook.com | www.greenskipshire.com.au

Locally owned and operated

Business Directory
Colour listings
from \$12/week

STORAGE

ALL TAMBORINE STORAGE

108 MAIN WESTERN ROAD
TAMBORINE MOUNTAIN
PHONE 0417 001 536

SWIMMING POOL SERVICE



PHONE 5545 1126

- Sales, Service and Installation of Pumps, Filtration, Heaters & Cleaners.
 - One off and regular Pool & Spa servicing
 - Pool Chemicals
 - Small Motors and Machinery Servicing
- Monday – Friday 8:30am to 4:30pm Saturday – 8am to 1pm
Closed Sunday & Public Holidays
Shop 2/24 Main St, Nth Tamborine

TELEVISION

JUSTRITE VIDEO SERVICE

SPECIALIST ANTENNA INSTALLATIONS
SATELLITE TV AND DIGITAL RADIO
HOME THEATRE • EQUIPMENT SETUP
WI-FI • TV, PHONE & DATA POINTS

32 Years Experience **Bruce Howsan** Lic No 71342
Ph: **5543 8374** Mb: **0438 761 595**

TILING

Tiling

QBCC LIC. 69815

Adam Sander
0417 616 307

Wall & Floor Tiler

Servicing the Scenic Rim for 10 years

- New & Renovation Work
- Wet Areas & Waterproofing

Peter Himberg 0412 263 556

QBCC: 56316
ABN 46 749 809 882

TREE SERVICES

Batchelor & Sons

LAND CLEARING
STUMP REMOVAL & EXCAVATION

- 24/7 Tree Arborists
- 28+ Years of Experience
- We Care for Your Trees

Call Us **0419 686 908**

Let's talk about your tree care needs!

TREE SERVICES

Tamborine Mtn

Affordable



Tree Service
0418 980 862

Removal & Trimming
Chipping & Stump Grinding
ADAM ROUTLEDGE

TYRES



- AGRICULTURAL
 - TRACTOR
 - TRUCK
 - NEW WHEELS
 - TYRE REPAIRS
 - FREE TYRE SAFETY CHECK
 - FREE AIR IN YOUR TYRES
 - WHEELBARROW
 - RIDE-ON
 - ATV & QUAD
 - WHEEL ALIGNMENT
 - TUBES
- Find us on Facebook
tamborinemountaintyres.com.au

VET SURGERY

Tamborine Mtn
24 Main Street
North Tamborine
5545 2422
all hours
Mon-Fri 8am-6pm. Saturday 8am-1pm

Canungra
Cnr Pine Road & Franklin Street
5543 5622
all hours
Mon-Fri 8.30am-6.00pm. Sat 8am-11.30am

Yarrabilba
Cnr Wongawallan Dr & Adler Circuit
3180 3096
all hours
Mon-Fri 7am-8pm Sat 7am-6pm
Sunday 8am-4pm

BALANCE VET



BALANCE VET REHAB **0431 263 728**

- Housecalls
- Conventional Medicine
- Physical Rehab
- Acupuncture
- Chiropractic

WATER SUPPLIES

PONY EXPRESS



MOUNTAIN WATER

Est 1985 - Maurice & Debbie
Friendly, Reliable Delivery

\$190 per load

BSC Approved

7 DAYS A WEEK

Ph: 5545 3935 or 0417 644 498



Quality Mountain Water

100% UV Filtered



Lic. approved by SRRC

Also Gravels, Sands, Soils

Roadbase Tipper Hire

Michael & Odette Johanson

Ph 5545 2225

0407 718 203

WATER TANK CLEANING & REPAIRS



THE H₂O TANK DOCTOR

Lauchlan McConnell

QBSA 062446 (Est. 1988)

www.theh2otankdoctor.com.au

- Water Tank Cleaning & Repairs
- Minimum water loss cleaning systems
- Water filtration solution "Roof to Tap"

Servicing all areas • Free quotes & advice most areas

Ph **5545 3693** or **0407 649 659**

WEDDING VIDEO SERVICES

Brisbane-based Videography, specialising in wedding films that capture the natural love & laughter of your day! Also servicing Sunshine Coast & Gold Coast regions. T&C's may apply



www.facebook.com/aleishagraco

vimeo.com/aleishagraco

WELDING & FABRICATION



MOBILE WELDING and FABRICATING

EXPERIENCED IN (BUT NOT LIMITED TO):

- Mobile plant & machinery maintenance & repairs
- Farm fence strainer posts & corners custom-built on-site
- Cattle rail fence lines or stable dividers
- Structural steel fabrication & erecting, Shed erection

FULLY INSURED, FULLY MOBILE ONSITE WELDING SERVICE
PLEASE CALL OR TEXT LEX ON 0423 668 542

0423 668 542



- Get your ad in front of more than 20,000 readers each week

Call or email

0417 238 238

advertising@scenicnews.com.au

Follow us



LIBRARY E-RESOURCES

Link from our website or download the app, and log in with your library card

Interesting Facts About Bookish Things

The great libraries of the ancient world served as archives for empires, sanctuaries for sacred writings, and depositories of literature and chronicles.

The Library of Alexandria

(fl. 285-145 BC)

This library was part of a larger research institution called the Mouseion, which was dedicated to the Muses, the nine goddesses of the arts during the reign of Ptolemy II Philadelphus. The Library quickly acquired many papyrus scrolls, possibly ranging from 40,000 to 400,000 at its height. The library began to decline starting with Ptolemy VIII in 145 BC, who appointed a palace guard as head librarian as a political favour. The Library, or part of its collection, may have been accidentally burned during Caesar's Civil War in 48 BC, but it is unclear how much was actually destroyed. While Plutarch relates that the entire library was destroyed, Dio Cassius says that only the storehouses along the docks containing great numbers of books were destroyed. Given numerous accounts of the library's use in the Roman period, it is likely however that the entire library was not destroyed. Casson concludes that the library was likely destroyed by Aurelian in 270 AD, during the Palmyran war, when the entire city was destroyed.

SCENIC RIM LIBRARIES

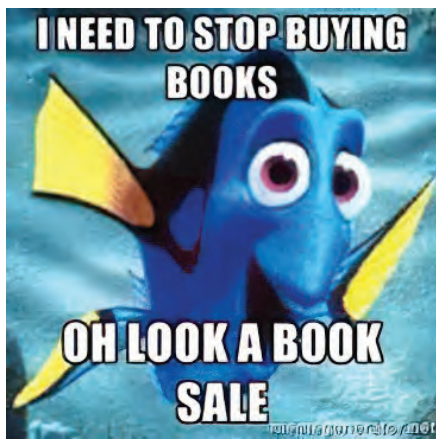


BOOK SALE

Come to the sale between 9am-12midday to find a treasure amongst donations and ex-library books.

Saturday 31 May

9am-12midday



CLUBHOUSE

Meet up at the clubhouse for games, play & art.

Ages 8-10

Every Wednesday 4 - 5pm



BABY RHYME TIME

A fun interactive session of songs, rhymes, books and movement to foster your child's love of language. Suitable for parents/caregivers with babies to children under three.

Fridays 9:15 - 10:00

To join this session please phone 5540 5473 or email the library - library.t@scenicrim.qld.com.au

STORYTIME & SINGSONG

Join us for stories & interactive songs and a craft pack to take home.

Bookings essential

0 - 5 years.

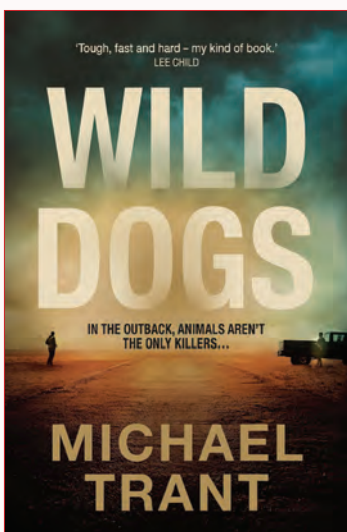
9:15 - 10:00 Monday

To join this session please phone 5540 5473 or email the library - library.t@scenicrim.qld.com.au

A Justice of the Peace is available Monday, Wednesday and Friday 10 am - 12 pm



Our Book Choice:



WILD DOGS by MICHAEL TRANT

In the drought-ridden rangelands of Western Australia, Gabe Ahern makes his living trapping wild dogs for local station owners. Still coming to terms with his wife's death -- and the part he played in it -- the old bushman leads a solitary life.

Until one morning, when he rescues a young Afghan man, Altair, from certain execution. Now, with a gang of people smugglers on his tail and the lives of Altair's family on the line, Gabe is drawn into a ruthless game of cat and mouse. His main opponent is Chase Hunter, a kangaroo hunter with bush skills as wily and sharp as his own. As the old dogger and roo-shooter go head to head, Gabe will need all his cunning to come out of this alive...

Genre: CONTEMPORARY AUSTRALIAN FICTION

LIBRARY OPENING TIMES MON-FRI 9AM-5.30PM • SAT 9AM-12PM

Tamborine Mountain Library is proudly operated by Scenic Rim Regional Council.

IN STOCK & READY TO GO

Australian Company - Tested to the Australian Standard using Australian Hardwood

KENT Country Classic MKII
Convection Heater with Fan
Heats up to 300m²

\$2099

Includes
Free 4m
Standard
Flue Kit
Save up to
\$599

KENT
THE FLAME OF THE FUTURE

MAXIHEAT PRIME 200c
Convection Heater - Heater Only
Heats up to 200m²

**NEW FOR 2022
SCOOP PURCHASE
\$1389**



Front Hearth Clearance: 300mm
Rear Clearance: as low as 100mm
Fan: 3 speed factory fitted
Warranty: 10 year firebox

**OVER 100
WOOD FIRES
ON DISPLAY**

KENT Somerset MKII
Convection Heater with Fan
Heats up to 200m²

\$1795

Includes
Free 4m
Standard
Flue Kit
Save up to
\$599

KENT
THE FLAME OF THE FUTURE

KENT Calisto Small Wood Stacker
with Fan • Minimum 10mm Cnr Clearance
Heats up to 200m²

\$2295

Includes
Free 4m
Standard
Flue Kit
Save up to
\$599

KENT
THE FLAME OF THE FUTURE

Medium and large Calisto deals also

KENT Fairlight Inbuilt
Includes dual fans and remote#
Includes zero clearance box - Heats up to 280m²

\$4395

Includes
Free 4m
Standard
Flue Kit
Save up to
\$699

KENT
THE FLAME OF THE FUTURE

GRAB A HOT DEAL NOW! For prompt installation



QUEENSLAND'S FIREPLACE SPECIALISTS FOR OVER 40 YEARS • TWO GREAT "STAND ALONE" LOCATIONS

GOLD COAST
fireplace&bbq
SUPER CENTRE
5531 6266

BRISBANE
fireplace&heating
3368 2011

84 Bundall Road, Bundall
Open 7 days
Mon to Fri 8:30-5pm,
Sat 8:30-4pm, Sun 10-4pm

sales@gcfire.com.au
www.gcfire.com.au



Douglas Street Design Centre, Milton
Showroom Closed due to floods
OTHERWISE BUSINESS AS USUAL
Call Heidi - 0434 693 000

info@bfandh.com.au
www.brisbanefireplaceandheating.com.au

*Conditions apply - Delivery, Installation, Extra Flues or Flashing are not included. Only while stocks last - Sale ends 24 April.