



Scenic

News

Tamborine Mountain, Canungra, Tamborine, Beechmont, Beaudesert, Cedar Creek, Boyland

TIMELY WINTER CHILL A PERFECT SETTING FOR CHRISTMAS IN JULY

The Handmade Cottage's Dorothy Holloway is the winner of Scenic News' "Best Christmas in July Business 2021" for her meticulous efforts in decorating her shop on Gallery Walk. Locals and off-Mountain visitors to the shop will be rewarded with a visual feast of shabby chic, vintage, romantic and gorgeous handmade gifts for all occasions. We heartily recommend you visit! Dorothy's prize includes complimentary advertising in the Scenic News. We wish to thank all who took part this year. Photos page 17

**Celebrating 62 years of unbroken publication...
www.scenicnews.com.au**




Canungra Dental



Implants

The perfect solution for teeth replacement.

Book today for our **FREE** Dental Implant Consultations with Dr Dallin Leneham
(07) 5543 5299

firehaus

a **HAUS**
collective
brand

Offering some of the world's most premium brands.
Contact us on **1800 200 240** or visit us at
www.firehaus.com.au



VISIONLINE CIRCLE
Slow combustion
Cutting edge technology
Designed as secondary source
heating

RRP \$4,209
\$3,589
Flue Kit Incl.



KALORA 500C
Up to 200m2 heating
Overnight burn times
Classical design

RRP \$2,068
\$1,699
Flue Kit Incl.

**We will beat any Gold Coast Fireplace Dealers
Pricing on Like for Like products by 10%**



KALORA 600C
Up to 300m2 heating
3 Speed fan
Rounded pedestal

RRP \$2,518
\$1,999
Flue Kit Incl.



**KALORA 500
WOODSTACK**
Up to 200m2 heating
Overnight burn times
Convenient wood storage

RRP \$2,268
\$1,899
Flue Kit Incl.



KALORA 425R
Radiant wood heater
Up to 140m2 heating

RRP \$1,518
\$1,099
Flue Kit Incl.

woodfires | gas fires | electric | bioethanol | accessories

SCENIC RIM'S LONG-TERM FUTURE?

The dust is still settling on the recent household plebiscite that sought to gauge the views of Tamborine Mountain residents regarding a simple question: Should it remain part of the Scenic Rim local government area or become part of Gold Coast City?

Regardless of the semantic arguments on how many people voted, how many didn't, what percentage of the total population participated, or what percentage didn't, there is no denying the overriding sentiment clearly exposed by the plebiscite.

And that is: There is a strong disposition within the Tamborine Mountain community to abandon Scenic Rim and move to the Gold Coast.

The arguments for and against such a move have been endlessly debated over a decade or more and the issue will simply not go away.

The plebiscite result, however important, is unlikely to precipitate a quick decision by the State Government to bring about boundary change.

Any boundary change will be administered by a formal process under relevant legislation that is conducted by the Change Commission and include consultation with the State Government and both councils. It may well be some time before the State Government shows its hand on the issue.

Interestingly, there is another issue lurking in the wings that no one seems to have considered, and it is this: Will the sparsely populated, fragmented, economically challenged Scenic Rim survive as a local government entity into the future?

Scenic Rim, as a local government area, lacks social cohesion; its towns, villages and rural areas are widely dispersed, and it is bedevilled by severe infrastructure problems. There is no real community of interest binding its citizens together. This is especially true for Tamborine Mountain, looking as

it does out over the Gold Coast and Pacific Ocean. It shares little in common with the good folk of Beaudesert, Boonah, Kalbar, Roadvale, Rathdowney or Aratula which is in the foothills of the Great Dividing Range, more than an hour's drive away?

In a recently issued media release from Scenic Rim Council, its population was revealed as being just 42,000. It is hedged by the Gold Coast (710,000), Logan (341,000) and Ipswich (232,000). The council predicts its population will reach 62,000 by 2041. This begs the question. If it is struggling now, will Scenic Rim Council, with its tiny ratepayer base, be able to provide the high level of community services now more than ever expected by its residents.

While SRRRC is doing its best to keep up, it lacks the necessary economic resources to provide all that it would like to.

In 2008 under the Local Government (Reform Implementation) Act 2007, Boonah merged with the southern rural section of Beaudesert Shire (including Beaudesert) and the Harrisville–Peak Crossing section of Ipswich Council to form the Scenic Rim Region. Tamborine Mountain was part of Beaudesert Shire.

Many questioned the economic wisdom of amalgamating Boonah and Beaudesert into the Scenic Rim Regional Council. At that time the State Government also succumbed to the mainly emotional argument – but one not without some justification based on the past – that if Tamborine Mountain was included in the Gold Coast, as some proposed, it would open the floodgates of unbridled development, including high rise structures and major tourism resorts along the eastern edge of the plateau. Even then though many were all for joining with Gold Coast.

Who's to know if the fears by those opposing the Gold Coast union would have been realised but is a widely accepted view today that GCCC has



done a splendid job in managing Springbrook and protecting its best natural assets, severely limiting development in the process.

The emerging reality, however, is that as part of SRRRC there is a profound threat to Tamborine Mountain's natural environment and unique residential lifestyle from what I call the creeping crud of unacceptable development in sensitive and inappropriate areas.

SRRRC pays lip service to the mountain's sensitive, natural environment and the treasured and unique lifestyle of its residents but is sneakily giving the nod to unacceptable development that is insinuating itself among people's homes.

It is this kind of development on its watch that has already allowed the destruction of precious koala habitat.

As the economic pressures continue to mount on Scenic Rim Council, don't be surprised to see it cave in to further questionable developments like the one on Main Western Road that has been put under the spotlight by the Tamborine Mountain Progress Association.

Be prepared to fight long and hard to preserve what we have under our current council.

Gary Stubbs

ACS Engineers

CIVIL | ENVIRONMENTAL | PROJECT MANAGEMENT

07 5541 3500

Providing Professional Engineering & Civil Design Services to the Scenic Rim

admin@acsengineers.com.au



www.acsengineers.com.au

WE OFFER:

- Weekly community newspaper
- 7100 distributed - to home letterboxes, and to local businesses
- Get your ad in front of more than 20,000 readers each week
- Free online exposure, and online advertising opportunities
- Modern website - great visibility for you
- Social media coverage included with your advertising

#scenicnews + facebook.com/scenicnews

- Tall A4 size - standout exposure
- High quality gloss print
- 62 years of unbroken publication!
- We cover Tamborine Mountain, Canungra, Tamborine, Cedar Creek & surrounds - bulk drops in Beaudesert

Looking to advertise - reach a bigger audience - have a story to tell?

Call today 0417 238 238 or

advertising@scenicnews.com.au www.scenicnews.com.au/rates

Editor/Production: Andrew Nagy 0432 827 537 info@scenicnews.com.au editor@scenicnews.com.au

Contributing Editor: Gary Stubbs 0431 722 177 news@scenicnews.com.au

Advertising? 0417 238 238

Call or email

advertising@scenicnews.com.au

ENERGEX WARNING OVER HOME 'SHOCKS, TINGLES'

Energex has launched a lifesaving campaign to raise awareness about the importance of reporting shocks and tingles, which can be a sign of deadly electrical hazards in and around your home.

Energex Area Manager, Chris Graham, said while 2309 public shocks were reported in Queensland last year, customer calls to the contact centre demonstrated an alarming lack of knowledge about the safest course of action.

"For example, we had a call from a customer who felt a shock when he touched a tap outside and thought it was hilarious, so he told his teenage nephew to try it," Chris said.

"They made a game of it until someone warned them to report it to us ASAP because shocks and tingles can indicate a life-threatening electrical fault.

"The key message in our new campaign is if you touch something that gives you a shock or tingle, the next thing you touch should be your phone. Call Energex immediately to report it so we can send a crew, at no charge, to investigate.

"Customers have also unwittingly risked their lives by using workarounds to avoid further shocks, like wearing thongs in the shower, rubber gloves when they're doing dishes or avoiding certain power points.

"We had a case where a tenant was told by a real estate agent to wear thongs after he'd received a shock in the shower. It was six months before Energex was advised of the issue.

"Another customer called to say her daughter was unable to use a power point in her bedroom because she kept receiving a zap whenever she touched it. This had apparently been going on for six months.

"Delayed reporting is usually due to ignorance, so we want everyone to understand these incidents are serious and if you don't act immediately, you are putting yourself or someone else at risk," Chris said.

Customers have reported receiving shocks and tingles from indoor and outdoor taps, showers, shed doors and ladders resting on gutters.

Mr Graham said the new safety campaign countered the natural reaction for people to repeatedly touch the things that had shocked them.

"It's like they are checking to see if they legitimately felt a shock or tingle the first time, but you really need to resist the temptation to touch the tap again. Remember, the next thing you touch should be the phone," he said.

To report life-threatening electrical hazards at any time, call Energex (13 19 62) in South-east Queensland.



Scott BUCHHOLZ MP
Federal Member for Wright

Working for Wright

- 🏠 21 William Street, Beaudesert QLD 4285
- ☎ 07 5541 0150
- ✉ scott.buchholz.mp@aph.gov.au
- 🌐 scottbuchholz.com.au
- 📌 SBuchholzMP

Authorised by S. Buchholz, Liberal National Party of Queensland, 21 William Street, Beaudesert QLD 4285.

These are my own personal views. I do not purport to speak on behalf of Council. Decisions of Council are made only by majority vote, legislative authority or under authority delegated by Council.

Councillor's Comment



DEREK SWANBOROUGH
DIVISION 1

COUNCIL BUDGET

The Community Budget Report is a 124-page document, so I thought in this column I would summarise some of the points of interest for Tamborine Mountain.

- There is talk of space being provided for Allied Health Services to come to the Mountain. This is just an announcement and there are no further details known at this stage.
- As previously announced, the Tamborine Mountain Library will move into the old IGA Building. Community consultation will commence soon on what that may look like in an architectural phase.
- New maintenance work is scheduled for the Tamborine Mountain swimming pool.
- Continuation of the Community Grants Program to the value of \$295,000
- \$173,000 for the continuation of the footpath on Alpine Terrace from Birchgrove Nursery up to White Road.
- Capital work at Vonda Youngman Community Centre - \$16,000.
- Tamborine Pool maintenance \$87,000.
- Botanic Gardens – replace effluent tanks – \$15,000.
- Security bollard fencing for Rosser Park and Guanaba Parks.
- New portable stairs at the Vonda Youngman Community Centre.
- The provision of a full-time staff member for the Vonda Youngman Community centre to enable access to more programs, only now available at the Boonah and Beaudesert cultural centres.
- Environmental grants program continues - \$104,300.
- Works will continue on the replacement of two grant-funded toilet facilities in Staffsmith Park and Geissmann Oval.

OVERALL BUDGET SPENDING ACROSS THE WHOLE OF SCENIC RIM

Council Budget will spend \$27.1 million on Scenic Rim roads and bridge network – \$1.41 million for footpaths, \$3.78 million for parks and gardens, \$90,000 on its Health and Active Program, \$8.02 million on maintenance of buildings and

facilities, \$1.44 million on Beaudesert drainage for the new Beaudesert library and precinct. Also funded for phase one of this project is \$8,400,658.

The big-ticket items of capital expenditure are:

1. Kerry Road (identified as a road of Regional Significance) replacement of Duck Creek Bridge – \$1.8 million.
2. Kerry Road upgrades \$6.24 million (includes bridge replacement).
3. \$3.34 million for Flying Fox Bridge replacement at Ferry Glenn.
4. Veresdale School Road upgrade – \$1.7 million.
5. Teese Bridge Veresdale - \$485,000.
6. Footpath - \$625,000 Beechmont – School to Windabout Road.
7. Footpath \$425,000 Beechmont – McInnes Court to School.

This is not an exhaustive list. Explanatory information can be obtained in Council's Community Budget Report on Scenicrim.qld.gov.au, or by contacting Council direct on 07 5540 5111.

Contact details

Mobile: 0436 351 567

Email: derek.s@scenicrim.qld.gov.au

Derek Swanborough
Councillor. Division 1



SNAP
SHARE
FOLLOW

BOOK YOUR EYE TEST TODAY!

SEE
Australia
YOUR WAY

Win a **\$20,000**
AUSTRALIAN HOLIDAY
OF YOUR CHOICE



Scenic Rim Optometrists
Beaudesert Medical Centre
47 William St, Beaudesert QLD
Phone: 5541 9510
scenicrimoptometrists.com



DANIEL TUNE



KATIE HENDERSON



MARK SMITH

FOR MORE DETAILS SEE:
eyecareplus.com.au/seeaus
ENDS 13 SEPT 2021
T&CS APPLY.



EyecarePlus[®]
OPTOMETRISTS

National Fire Ant Eradication Program

Fire ants found in your area

Check your property now






fireants.org.au Delivered by Biosecurity Queensland.



Eagle Heights
DENTAL CARE

07 5545 2522



Here is something to smile about:
Mention this ad, and your check-up,
clean and x-rays procedure
is only \$200 (limited time only).

Tamborine Mountain Shopping Square
17-27 Main Western Road, North Tamborine
ehdcreception@eagleheightsdental.com.au
www.eagleheightsdental.com.au

Authorised by the Queensland Government, William Street, Brisbane.



Council Notices

SCENIC RIM
REGIONAL COUNCIL

COUNCIL GRANTS

COMMUNITY GRANTS
Applications for Council's Community Grants (Minor and Major) close on 5pm on Friday 30 July 2021.

ENVIRONMENTAL GRANTS
Applications for Council's Environmental Grants close at 5pm on Friday 13 August 2021.

For further information on the funding opportunities available through the grants program, visit Council's website www.scenicrim.qld.gov.au/grants-funding-awards.

WASTE COLLECTION

From 1 July, the time your waste collection truck arrives may change. Please have all bins kerbside by 6am on your designated waste collection day. Don't miss your collection, put bins out early and watch out, you might spot one of our new trucks.

DOG REGISTRATION REMINDER

Scenic Rim dog registration payments are due on 31 July 2021. The registration period runs from 1 August 2021 until 31 July 2022. A range of payment options are available to pay your animal registration renewal notices including online and by phone 24 hours a day. Visit www.scenicrim.qld.gov.au/animal-management for more information.

PAYMENT VERIFICATION SERVICES FOR SUPPLIERS

Council is partnering with EFTSureTM to provide more security for payments to suppliers. Local businesses currently doing business with Council, will receive communication over the next week asking them to verify details with EFTSureTM to support timely and safe payments of accounts. Please contact Accounts on 07 5540 5111 for more information.

LIBRARIES

Visit scenicrim.qld.gov.au/libraries

OUTREACH - FIRST 5 FOREVER RHYME TIME

UNYAH JARGUN BEAUDESERT	3 August
RATHDOWNNEY	4 August
BEECHMONT	5 August
TAMBORINE VILLAGE	10 August
CANUNGRA	11 August
KALBAR	19 August

STORYTIME SESSIONS
Bookings are essential. Space and number limits apply.

BEAUDESERT Tuesday 9.30am | Wednesday 9.30am
BOONAH Monday 10am | Friday 10am
TAMBORINE MOUNTAIN
Monday 9.15am | For children 2-5 yrs
Friday 9.15am | Baby Rhyme Time 0-2 yrs

DIGITAL DAYS
BOONAH | TAMBORINE MOUNTAIN
Tech help sessions are being held at Beaudesert, Boonah, Canungra and Tamborine Mountain libraries. Bookings are required.

TAMBORINE MOUNTAIN LIBRARY
NAME THE GAME Wednesdays | 4pm - 4.45pm | 8+
Bookings required. Bring board games to life, unearth old parlour games and battle through the weekly challenge.
BUSY FINGERS | Tuesdays | 1pm - 3pm
If you want to learn to knit, or knit with a group, join our 'Busy Fingers'. Bookings required.

BEAUDESERT LIBRARY
YAK & YARN | Tuesdays | 9.30am - 11.30am
KIDS SPACE | Thursdays | 4pm - 5pm
YOUTH BOOK CLUB | Tuesdays | from 4pm | Ages 12-15

LIVE + ONLINE AT THE CENTRES

For more information or bookings phone 5540 5050 or liveatthecentre.com.au


PM CONCERTS
It Takes A Lot Not To End Up Dead!
with NiKNaK Productions
Saturday 14 August | 2pm
The Centre Beaudesert
Tickets Adults \$34, Conc. \$29, Groups 8+ \$29




We Will Rise with Topology
Saturday 21 August | 7.30pm
Boonah Cultural Centre
Tickets Adults \$34, Conc. \$29, Groups 8+ \$29

FRIDAY FLICKS
Boonah Cultural Centre | 10am | 1pm | 7pm
Tickets \$10 or Conc \$7.50 Pre-purchased essential

6 August Blackbird (M)
13 August Minari (PG)
20 August High Ground (MA)





ON EXHIBITION
WOVEN
Hanging by a Thread and Scenic Seniors: Life Stories
21 July to 27 August
Exhibition opening
Saturday 24 July | 10.30am | The Centre Beaudesert
Free entry but bookings required
Features *Hanging by a Thread* by artist Therese Flynn-Clarke and poet Sally MacKinnon and *Scenic Seniors: Life Stories* by Centacare

BASI Just Art
Annual members' exhibition continues until 6 August
Boonah Regional Gallery
Gallery hours: Wed-Sun 9am -2pm; Free Entry

WORKSHOPS AND TALKS
Scenic Rim Writers Book Launch - Mystery, Murder & Mayhem
Saturday 7 August | 10am | The Centre Beaudesert
Celebrate this latest publication and meet the writers

Arts Dinners Live and Online:
Back from the Brink
The role of arts and life in and out of and after detention.
Tuesday 10 August | from 6pm
The Centre Beaudesert
Register for livestream
www.liveatthecentre.com.au
Createplace Life Writing Retreat
13-14 August | Vonda Youngman Community Centre

Council correspondence should be addressed to: Jon Gibbons, Chief Executive Officer, PO Box 25 | 82 Brisbane Street, Beaudesert QLD 4285 | Telephone 07 5540 5111




scenicrim.qld.gov.au



Property of the week

SALE 4 2 2 2,564m²

So much to offer as a family home \$625,000+
 9-11 Corona Court, Gleneagle

- Located in a quiet cul-de-sac with loads of entertainment space
- All bedrooms with built-ins, various living areas
- Pool for the kids + large barn style 3-bay shed
- Two water tanks plus trickle feed town supply

AGENTS:
 Monique Clemens 0429 004 840
 Erin McGee 0427 078 757



Property of the week

SALE 4 2 6 2,082 m²

Entertainer's delight \$920,000+
 26-28 Racecourse Road, Tamborine

- Multiple living areas, great outdoor living with bar & overlooking the in-ground pool where the kids have room to play
- Plenty of garaging for the family's vehicles
- Fully fenced, quiet area, room for a horse

AGENTS:
 Michael Kratzke 0434 718 162
 Diane Pihl 0424 653 316



PROPERTY MANAGEMENT

Short and long term rentals

Looking for the BEST management team to manage your investment?
 You'll be in great hands all year round!
 We would love to help you
 Call us...

Mountain 5545 4000/ Tamborine 5543 6444

OPEN HOMES Sat 31st

10 - 10.30 8 Kalmia Court
 10 - 10.30 37 Benowa Street
 11 - 11.30 26 Racecourse Pl, Tamborine
 12 - 12.30 2-8 Roslyn Court
 1 - 1.30 7 Tweed Heads Ave

Happy Friendship Day

30th July 2021
National Friendship Day in Australia



Review: Seller - 489 Greensward Rd

Mark & Debra, they understood my situation & worked closely with me to improve the marketing of the property. They managed to sell it for an amount other agents scoffed at. All in all I could not have had better agents. Thanks - Gerard McDonald



AGENTS: Team Mark & Deb
 0407 292 036 / 0409 210 362



SALE 4 3 2 2.33ha

Lot 4/163 Curtis Road, Tamborine Mountain

- Stunning home with endless views
- Natural light, open space & evening breezes
- Private, quiet, securely gated estate
- Landscaped gardens, fruit & nut trees
- Enjoy nearby cafes, shops, wineries

\$3,985,000 +

AGENTS:
 Ton Wolf 0424 591 012
 Heleen 0424 591 011



SALE 5 5 7 2,188m²

5-7 Platt Place, Tamborine Mountain

- Impeccably presented home offers family home, dual living or income options
- Each bedroom has an ensuite, Nth facing lounge with fireplace & sunroom to outside
- So many options, live and work from home!

\$1,600,000

AGENTS:
 Linda Hogan
 0414 300 558



SALE 4 2 1 1,272m²

7 Tweed Heads Ave, Tamborine Mountain

- Completely renovated - move in and relax
- Large bi-folds open up living area to outside
- 3 bedrooms downstairs, separate WC, entrance
- 2 street access, great location, back garden has firepit seating to enjoy those chilly evenings

\$949,000+

AGENTS:
 Linda Hogan
 0414 300 558





\$370.00pw  3  1  1 

156 Long Road, Tamborine Mountain

- Great location, stroll to Gallery Walk
- Air-conditioning in lounge room
- Bathroom with shower over bath
- Entertainment deck
- Large unfenced backyard
- Pets on application only

AGENTS:

Amy 0474 315 000
Tania 0428 654 000
Sarah 0429 001 013



SOLD  4  2  2  3.26 acres

112 Munstervale Road, Tamborine

Enjoy the rural lifestyle

Congratulations Sonya & Brad, welcome to the lovely area of Tamborine. The kids are going to love all the extra space for the horses, and for themselves to roam & play

Interested in a current market report & value of your property? Call for a complimentary one!

AGENTS:

Monique Clemens 0429 004 840
Erin McGee 0427 078 757



Selling with Professionals

It's a big decision to sell your home. Whether it's upsizing, downsizing or relocating, it can be a complicated and emotional process. With more than 225 offices across Australasia, and over 40 years of experience, with direct access to buyers looking for properties in your area, Professionals has helped thousands of property owners achieve a great result with the sale of their property.

We are not a franchise, but a group of independents under one **brand**, committed to getting the best price for your property and here to assist in making the process as stress free and rewarding as possible.

There are many things to consider. Understanding the real estate market, whether to sell or auction, how to best market your property, how to achieve the best possible price and the specific considerations for selling existing or new homes, units, land, rural, business or commercial properties.

Professionals are with you from start to finish with a team that is familiar with the local market conditions (being locals ourselves) and with the support of an international brand & network. We prepare the home appraisal, plan an open house, negotiate with potential buyers and are beside you until the transfer of ownership to the buyer.

With a combination of passionate people, outstanding service and expert market knowledge we can do the same for you. For us, it's not just about a single sale, as we are more focused on delivering more PROs and less cons.

We want to be your first choice when it comes to selling, buying and managing your properties, now and into the future - selling at the right time for you and at the right price.

For anything you need during your home selling journey, we, your nearest Professionals office is ready to help. For a free marketing appraisal, call or visit www.professionaltamborinemountain.com.au/why-sell-with-us

07 5543 6444

ProfessionalsTamborine.com.au
2205 Beaudesert-Beenleigh Rd, Tamborine 4270

07 5545 5000

ProfessionalsTamborineMountain.com.au
10 - 12 Main Street, North Tamborine 4272



300th PARK RUN COMING UP

Tamborine Mountain Park Run will hold its 300th event on Saturday 7 August at the sports complex on Long Road, seven-and-a-half years after the first event was held in January 2015.

There has now been a total of 10,000 finishers at the venue from over 200 different running clubs from across Australia and overseas.

More than 225 people have given their time to act as volunteers to keep the park run going. Most are locals, and they cannot be thanked enough for their efforts.

Park Run is a free 5km run or walk which starts at 7am at the Tamborine Mountain Sports Centre every Saturday; it is part of a worldwide organisation which has over 400 chapters in Australia, where every Saturday around 30,000 Australians participate.

The theme for the 300th run is Aliens, so feel please to participate disguised as an alien. Breakfast consisting of coffee, egg and bacon rolls etc will be available for sale at the canteen courtesy of the Tamborine Mountain Eagles Soccer Club.



TAMBORINE MOUNTAIN COLLEGE
UNDER 8'S DAY
CELEBRATING OUTDOOR PLAY & LEARNING
FRI 13 AUG 2021
9 - 11 am
JOIN US FOR A RANGE OF FUN OUTDOOR ACTIVITIES
PONY RIDES JUMPING CASTLE PETTING ZOO
www.tmc.qld.edu.au/announcements/under-8s-day-2021
80 BEACON ROAD, TAMBORINE MOUNTAIN | 07 5545 3644 | WWW.TMC.QLD.EDU.AU

A circular illustration of diverse children holding hands around a central logo. The logo features the letters 'TMC' and the motto 'VICTORY & VALOUR'. The background is blue with clouds, butterflies, and a fish.



JON KRAUSE MP

State Member for Scenic Rim

SUPPORTING LOCAL PRIMARY SCHOOLS

I met recently with the Principal of Tamborine Mountain State School to discuss various issues, including the future of the 'independent public school' initiative that provides 250 schools across Queensland – including TMSS – with autonomy in how they implement the curriculum and implement specific educational programs.

This program is only funded on a year-by-year basis by the State Government, meaning ongoing uncertainty as to whether it will be continued from one year to the next. It should be funded for a longer, four-year period, to provide certainty. It is also a concern that there is a lack of focus shown by the Education Department in getting some of the basics right when it comes to buildings and facilities across Scenic Rim Electorate (and probably across the State).

There has been additional funding provided for some type of new buildings in this year's Queensland Budget, but things like adequate toilet facilities for some schools are not on the radar for the department. They really should be – it's just basic common sense that as schools grow, their facilities like this need to grow as well. I will be taking up to the Minister for Education the case of a number of schools across the region that need their amenities improved considerably due to growth of student numbers and just basic poor condition.

BORDER CLOSURES

The New South Wales border closed at 1am AEST Friday 23 July 2021. New South Wales border zone residents can only cross the border for a permitted purpose. Likewise, Queensland residents can only enter the New South Wales border zone for a permitted purpose. New South Wales border zone residents and Queensland residents cannot travel outside the border zone in New South Wales and then enter Queensland. For more information or to apply for an exemption visit: qld.gov.au/health

GAMBLING COMMUNITY BENEFIT FUND

Round 111 of the Gambling Community Benefit Fund is now open and community organisations have until 31 August 2021 to apply for grants of up to \$35,000. I have provided letters of support for numerous community groups, and together with other grant initiatives, our region has received more than \$15 million in grant funds for community organisations since I was elected as your representative in 2012.

I encourage clubs and community organisations to apply for assistance. Please contact my office for more information or to request a letter of support and visit justice.qld.gov.au

CONGRATULATORY LETTERS

Do you know someone with a significant birthday or anniversary coming up? I'd love to write them a letter to celebrate their milestone – whether it be a 90th, 100th, or 105th birthday, or a 50th, 60th, 65th or 70th wedding anniversary. Depending on the occasion, you can also receive a letter from Federal Member, Scott Buchholz MP, the Premier of Queensland, Governor of Queensland, Prime Minister of Australia, Governor-General, or Her Majesty the Queen. For more information or to request a congratulatory letter, please contact my office on 5515 1100 or email scenicrim@parliament.qld.gov.au

MY OFFICE

In addition to helping with Queensland Government matters, my office can provide assistance in procuring Queensland flags and letters of congratulations for significant birthdays and anniversaries. We can also provide letters of support for community groups seeking grant funding. Anybody considering becoming a Justice of the Peace/Commissioner for Declarations will need to contact my office to complete the nomination form.

If you have an issue that you think should be fixed, I encourage you to contact my office, toll-free on 1800 813 960, so I can lobby on your behalf in Brisbane.



SCOTT BUCHHOLZ

Federal Member for Wright

VACCINE ROLLOUT IS RAMPING UP

The vaccine rollout is gaining pace with a new record of 196,430 doses administered on Thursday 22 July and over one million doses administered in a week. This daily rate is equivalent to the US administering over 2.5 million doses in a day.

Over 10.85 million doses have been administered to date with over 5500 GP sites and now pharmacies providing COVID vaccines across Australia.

- More than one in three of the eligible population aged over 16 are protected with a first dose (37.07 per cent).
- Over three quarters of over 70s are protected with a first dose (76.60 per cent).
- More than 60 per cent of over 50s are protected with a first dose (61.55 per cent).

MORE PHARMACIES / GPs TO DELIVER VACCINES

Thousands of community pharmacies and additional GPs across Australia will be able to join the COVID-19 vaccine rollout. This additional workforce will be brought on board to support pharmacies and GPs already delivering COVID-19 vaccines in cities, regional, rural and remote areas, as well as areas with a COVID-19 outbreak. Community pharmacy is an essential part of Australian health care.

2032 OLYMPICS SECURED FOR QUEENSLAND

Australia will host the Olympics for the third time and Paralympics for the second time after Brisbane and South-East Queensland secured the 2032 Games. Securing the biggest sporting event in the world offers a goal to any young Australian who dares to dream big. Brisbane and Queensland will deliver an Olympic and Paralympic Games which are affordable, beneficial and sustainable. KPMG has estimated the economic and social benefits of the Brisbane 2032 Games at \$8.1 billion for Queensland and \$17.6 billion for Australia. The Games will also create around 120,000 new jobs, including 90,000 jobs for Queenslanders. I look forward to seeing what this means for our region, with better infrastructure, tourists, perhaps even events hosted locally.

MALICIOUS CYBER ACTIVITY FROM CHINA

The Australian Government last week joined international partners in expressing serious concerns about malicious cyber activities by China's Ministry of State Security. In consultation with our partners, the Australian Government has determined that China's Ministry of State Security exploited vulnerabilities in the Microsoft Exchange software to affect thousands of computers and networks worldwide, including in Australia.

These actions have undermined international stability and security. Australia calls out these malicious activities to highlight the significant risk they can pose to Australia's national security or to international stability, which in turn can undermine business confidence and inclusive economic growth.

ADVERTISEMENT



Jon KRAUSE MP
Member for Scenic Rim

Fighting for our fair share

07 5515 1100 [f JonKrauseMP](https://www.facebook.com/JonKrauseMP)

Authorised by J.Krause, 91 Brisbane Street, Beaudesert QLD 4285.



Letters to the Editor

Readers are reminded that letters to the editor must show full name of writer for publication.

NATURE-BASED TOURISM 713-735 MAIN WESTERN RD

The pro formas allowing residents a right of reply to this inappropriate development published in the *Scenic News*, 15/7 and 22/7 have resulted in many responses and further questions.

The sections of the Planning Scheme relating to the onsens development application on Main Western Road are:

6.2.16 Rural Residential Zone Code

3) The purpose of the Rural Residential Zone Code - Rural Residential A Precinct will be achieved through the following overall outcomes: (a) Development:

(i) facilitates low density residential living on large acreage lots in a semi-rural or natural landscape setting;

(ii) protects the high level of residential amenity and privacy expected in the zone;

(iii) complements the semi-rural or natural landscape setting.

The definition of Nature-Based Tourism in the Fact Sheet:

Proposals for Nature-based Tourism accommodation must be able to clearly demonstrate the important environmental values that it is based upon, which distinguishes it from more generalised accommodation types like Short-term Accommodation and Tourist Park.

The first stage of the already advanced large construction is a remake of the original house. Here one floor is to be given over to a bar, reception area and "lodge".

In addition to the eight onsens here, five tourist cabins are to follow. The developer is President of the Gold Coast Women in Tourism as well as Project Manager, Latitude Constructions Pty. Ltd. Australia and Managing Director, Ultimate Events Pty Ltd.

The subject site is Rural Residential A. Whilst this is a larger sized residential site, a proposal such as this, if successful, will lay grounds for further inappropriate development even on smaller residential sites – and we have a lot of those.

We wait with bated breath to see how Council deals with this one.

**J. Lockey
President
Tamborine Mt Progress Association**

A GENERAL LACK OF UNDERSTANDING ON PLEBISCITE PROCESS

Regardless of the efforts undertaken to explain the process, through public notices in local papers, there still seems to be a general lack of understanding as to the way in which the Tamborine Mountain plebiscite was conducted and why it had to be done that way.

It required considerable personal time and cost invested to give us this opportunity to make our preference known. Those who didn't participate, for whatever reason, are not counted.

It was also in line with a policy commitment, made as an election promise by our councillor, who won a majority of the primary and preferential vote at the local election.

It was approached with an educated understanding that a boundary realignment was achievable. If it wasn't, the plebiscite would be a waste of everyone's time.

To suggest that a third option be available, "to stay with the Scenic Rim while it makes an honest attempt to correct the unacceptable management policies ..." was never an achievable option.

I have not been aware of this council's concern for the interests of the Mountain residents since first buying property here in the 1980s.

We were afforded an opportunity to let the SRRC know how we felt about their performance and send a strong message from the Mountain.

Cr Swanborough had explained that the ballot papers were to be provided to each household, not to each voter; reason being that access to the electoral roll was not permissible.

This is why 3096 residential households, and not the 4827 registered voters, were to receive ballots.

Cr Swanborough printed and provided this number of ballots to Australia Post to be delivered to each residence in 4272.

If they were not received, the fault was not with Cr Swanborough.

Having received complaints from the many who failed to receive votes, he went to the extra trouble of holding personal ballot boxes at two locations after the ballot had closed, in an attempt to make sure everyone had the opportunity to register their choice.

I find it very disturbing that ballots seem to have disappeared or were not delivered to letterboxes and that there is an element on the Mountain who would actively deprive people of their right to decide.

When a poll is conducted it is different to an election. The statistics are derived from those who participate. Not those who could have participated. They didn't abstain, they just didn't participate.

There are 3900 registered addresses in 4272. Some of these are commercial premises. The actual residences amount to 3096. This was the number of ballots sent out. As explained, when conducting a poll, the only information that is considered is the percentage of those involved in the poll.

This is then treated as a sample of the population. Over 50 per cent involvement is considered a high percentage. Of that 50 plus per cent, 65 per cent were in favour of leaving the SRRC. If more ballots were returned, that percentage could have been higher.

Cr Swanborough should be commended for his efforts in giving us this opportunity.

Julie Wilkinson

65 PER CENT IS 65 PER CENT

Phil Giffard's 'analysis' of the plebiscite, published in last week's *Scenic News*, is worth a response. Ian Langdon's response is entirely suggestive and non-factual. So, back to Phil.

'Our community has 4827 parliamentary votes, and 3096 ballots were distributed', leading Phil to suggest that 36 per cent is excluded. Not having access to the electoral roll, individual polling was no option for the organisers of the plebiscite. The best alternative, without government involvement, is a household plebiscite. Those 3096 ballots covered the entire community, even including locals who 'normally' are not eligible to vote.

A response of just over 50 per cent is very high by any standard, and statistically more than sufficient to deliver a reliable result. In countries without mandatory voting, elections often end up with lower percentages than this.

Of course, other options than either Gold Coast or Scenic Rim might be

continued page 20



TAMBORINE MOUNTAIN MEDICAL PRACTICE

14 Main Western Road
North Tamborine
and
Shop 1/17 Southport Avenue
Eagle Heights

Phone: 07 5545 1222

www.tamborinemountainmedical.com.au
online booking service available on this website

50 years of continuous service to the
Tamborine Mountain community

Affiliated with three universities

COMPREHENSIVE HEALTH CARE SERVICE

Opening Hours:

Mon – Thurs 8.30 am – 6:15 pm
Fri 8.30 am – 5 pm
Sat 8.30 am – 12 noon
Sun 8.30 am – 10.30 am

Dr Ann Bennett
Dr Leeann Carr-Brown
Dr Jan Zomerdijk
Dr Sanne Kreijkamp-Kaspers
Dr Henri Coombs
Dr Joe Gambin
Dr Cobie Powell
Dr Hok-Yee Siu
Dr Marije Dalebout
Dr Jardin Taha
Dr Nisha Nangrani
Dr Lauren Ries

Accredited by



BOTANIC GARDENS GIANT PLANT SALE



Are succulents or hippeastrums on your plant shopping list this weekend? Then head to the Botanic Gardens on Saturday morning because they and much more are on sale at amazing prices at a special one-day plant sale.

The sale is being held in conjunction with the Garden Club's Camellia and Magnolia Festival. The magnificent display of plants includes the succulents and hippeastrums, as well as small white agapanthus, coreopsis and many more.

A range of bare rooted plants including agapanthus, clivias, mondo grass and crucifix orchids has also been prepared.

While the sale will not include camellias or magnolias, visitors will pass a magnificent display of large camellia bushes near the sale area.

A sausage sizzle will also be available, as well as fresh coffee.

The Sooty Owl Creekside Trail will welcome children with a range of special activities from 10am until 2pm.

The sale will be held at the Potty Potters' propagation pavilion at the southern end of the Gardens. Signs have been placed along the road to point the way. The sale will begin at 9am on Saturday and close at 2pm.

Vehicles will be available to help people with large purchases take their plants to the car park. The vehicles will also be available for less abled purchasers.

Please be aware that tickets to the Garden Club's Camellia and Magnolia Festival will NOT be available at the Botanic Gardens. Ticketing for the festival is online only.

The sale will be conducted under a COVID-Safe plan which means we must ask all visitors to maintain social distancing and take advice and direction from our volunteers. We have arranged to accept card payment on the day and would prefer visitors to pay in this way. We will accept cash.

Visitors are most welcome to bring a picnic and enjoy the ambience of the Gardens.

TAMBORINE MOUNTAIN CRICKET CLUB



ANNUAL GENERAL MEETING

SATURDAY 7TH OF AUGUST at 3.00PM
TMSA CLUBHOUSE
400 LONG ROAD NORTH TAMBORINE

Nomination forms are available on our website at tamborinemountaincricket.com.au
Enquiries should be forwarded to tamborinemountaincricket@gmail.com



**The only purely 100%
Australian Funeral Company
and Crematorium**
**Winner Qld Seniors
Excellence Award**

Enquiries
Welcome **5593 4777**



SCENIC RIM MUSIC SCHOOL

*invites you to experience our
brilliant concept in music tuition:*

PIANO STRINGS VOICE
on Tamborine Mountain

to register your interest:

07 5545 4700 or 0422 788 399

Ask us about our local 'do-re-we'
classes for Pre-schoolers.

www.scenic-rim-youth-choir.org



IT'S THE LITTLE THINGS THAT MAKE ALL THE DIFFERENCE

Mount Tamborine resident Edith is an advocate for Beaumont Care, her home of two years, and believes that it's the little things that make all the difference. She also likes that her cat, Puss, is an important part of the family.

"The care here is different to most aged care places. The staff know you well, and it's the little things they do that makes all the difference," said Edith.

"For instance, the other morning, I was out taking Puss for a walk in the garden. It was a cold morning, so one of the staff decided to bring me out a cup of coffee to keep me warm. It was a real personal touch.

"Everyone here looks out for you. It's like a family, and they get to know your ways. The meals are lovely, and if you don't like what's on the menu, then they will make something else for you.

"They all know Puss, too; he is part of the family."

Edith also likes the fact that there is always something to do each day to keep her busy and active, such as bus trips, cooking, quizzes, craft, and bingo.

"Sometimes we go to the shops and have a coffee and an ice cream.

"There is also a volunteer that comes in on the weekends to play cards. If you don't want to join in, then you can still sit and have a chat and a joke.

"It's very homely and friendly and is definitely one of the better places to live."

Beaumont Care Owner, Linda Beaumont, said that understanding and meeting the individual needs of each resident is something that the staff are passionate about.

"We are all about providing warm-hearted care to residents and their families, especially in their time of need," said Linda.

Beautiful views with a rural outlook, tranquil gardens, quiet reading nooks, and a family-like atmosphere is what makes this home so special. Beaumont Care Mount Tamborine is a stone's throw from shops and amenities with activities, outings, and get-togethers to keep you active and sociable.



Beaumont Care Mount Tamborine Roslyn Lodge resident Edith says it's the little things that make all the difference to a care home.

This quaint residential aged care community offers a range of accommodation options, and a high standard of personalised care delivered 24/7 by professional staff who know each resident's individual needs and choices.

Beaumont Care is Australian family owned and operated and provides quality, person-centred care and support services designed to suit a range of individual needs. From residential and respite care to supported living, NDIS and support for the aged, disabled, and disadvantaged. Our caring and highly qualified staff are passionate about ensuring that every resident and participant is treated with respect, dignity, integrity, and warmth.

For more information about our residential aged care community at Beaumont Care Mount Tamborine or to book an inspection, please call 1300 217 336 or email enquiries@beaumontcare.com.au. To find out more about our other communities at Kippa-Ring, Clontarf or Wamuran call us or visit www.beaumontcare.com.au.

Proudly maintaining the smiles of the Tamborine Mountain Community for over 25 years!



FAMILY & COSMETIC DENTISTRY

- We offer a comprehensive dental service covering all areas of dentistry.
- Preferred providers for BUPA, Medibank Private, CBHS & HCF.

PHONE: 5545 2788

MOBILE: 0455 452 738

info@tamborinemountaindental.com.au

www.tamborinemountaindental.com.au

OUR TEAM:

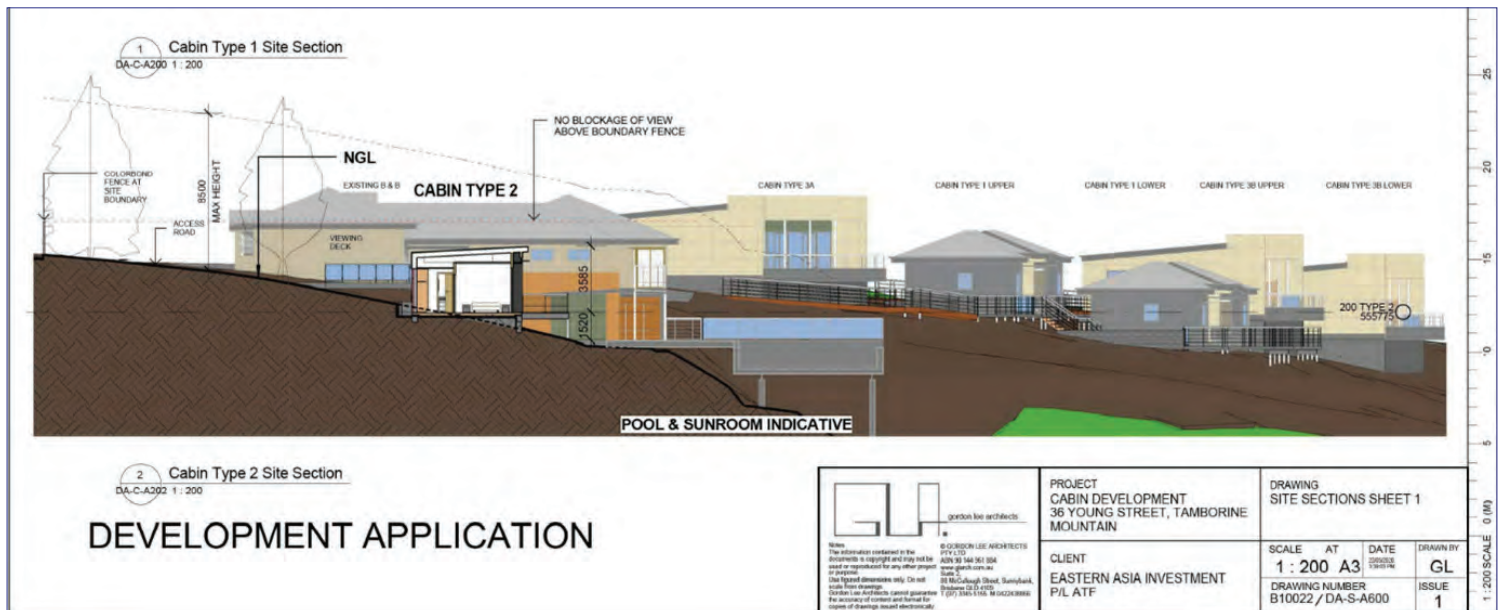
Dr SANDEEP GUPTA B.D.Sc



TAMBORINE MOUNTAIN DENTAL

EAGLE HEIGHTS SHOPPING VILLAGE (above FOODWORKS) 14/17 SOUTHPORT AVE, EAGLE HEIGHTS

PLEASE HELP STOP DEVELOPMENTS LIKE THIS IN YOUR BACK YARD!



Did you move to Tamborine Mountain to attain your own little piece of paradise? Have you bought your property, investing your lifesavings, in an area that is deemed RURAL, safe in the knowledge the surrounding land can never be developed for commercial purposes? Well, think again. The very lifestyle most of us have moved to the Mountain for is under threat.

“Nature-based Tourism” is currently the catch-all categorisation within the *Scenic Rim Planning Scheme 2020* for developers seeking to obtain approval for a tourist venture based on cabins and overnight accommodation, the definition being so broad that it captures any proposed development located in “an area of environmental, landscape, scenic or heritage value” or “a place of local interest”. In other words, a view is sufficient. Or even a clump of native trees!

Within the Rural Zone – Rural Escarpment Protection Precinct, “nature-based tourism” is a consistent use (where located on a site greater than 2ha and not exceeding a total of 4 tourist accommodation sites) and a *potentially* consistent use if not exceeding 10 tourist accommodation sites.

That means if you have a large block of land beside your property you could effectively end up with 10 cabins right on your doorstep. And with those cabins will come increased traffic, noise pollution, disruption of your view and a potential infringement on your privacy.

The new road servicing the resort will be just 20 metres from the bedroom window of at least one of the residents who moved to Tamborine Mountain to escape the stress of city living in Brisbane.

One of the proposed cabins would be just 14 metres from that fence line.

Vehicle lights at night will shine directly into their house, traffic noise throughout the day will disturb the peace and tranquility they thought they would experience, and on top of all of that their view will be disrupted. Red arrow indicates site of development.



We need to act now to stop these kinds of developments before we all find ourselves faced with a similar problem. If this development gets approved it will set a precedent for future submissions.

BUT YOU CAN MAKE A DIFFERENCE by submitting your objection to Council before COB 29 July 2021.

Contact: A.Hay, Secretary, Tamborine Mountain Progress Association Inc, 0493 145 315.

The Assessment Manager
Development Assessment Unit
Scenic Rim Regional Council
P.O. Box 25, Beaudesert Qld 4285

Dear Sir,

**SUBMISSION re Development Application MCU20/077 - Impact - Development Permit for Material Change of Use (Nature Based Tourism - 10 Tourist Cabins within 6 buildings) - Lodged: 11/08/2020
Address: 36 Young Street Tamborine Mountain**

The Scenic Rim Regional Council should reject the above application for the following reasons:

The proposed development contravenes the intent of the Planning Scheme.

The proposed development is located on land within the Rural Zone and the Rural Escarpment Protection Precinct.

- Such a development should not be set on this particular site, as it would be an overdevelopment of the site, based on the existing approved use, planning scheme overlays on the site, limited possible future building locations, required parking and effluent areas.
- This proposal represents a further intensification of the existing approved use of the dwelling as a Bed & Breakfast (Tourist Use) & Food Establishment/Reception Centre. The primary use of the dwelling was conditioned to remain “private permanent residence”. A subsequently approved “Minor Change” altered the floor plan and reduced the required car parking spaces yet the floor area dedicated to the B&B use is greater than that utilized for residential purposes.
- The applicant is not seeking to extinguish the existing approved uses and is seeking to run the two (2) Tourist uses simultaneously, thus two (2) Tourist Uses are proposed to operate on the same rural site.
- The applicant also contends that the existing orchard represents the “principal rural activity” on the land. On this premise, and based on the primary use being residential, there will be 4 concurrent uses on the site.
- The proposal is a significant over-development of the site and does not represent a scale, form and intensity intended in the Zone and is **not** consistent with the reasonable expectations of surrounding residents. There are 10 adjoining properties on the norther boundary, and all dwellings have been constructed at the rear of each property in close proximity to the proposed development and will be adversely impacted, as their amenity will be affected (views, noise, dust, light, etc). Fauna-friendly fencing is absent.
- Whilst the entire site is 4.36 ha, the topography and existing vegetation results in the corralling of the structures, car parking, access road and tourist uses into a confined space adjacent to the boundary with the properties which front onto Bateke Rd.
- The development significantly increases traffic and introduces new traffic impacts into a predominantly quiet rural area which culminates in a cul-de-sac.
- Inadequate provision of required parking spaces – Appendix D to the application contains a calculation of 1 car park per lettable space ie 10 plus 1 for PWD. Under Table 9.4.5.3.3 Car & Service Vehicle Parking, the requirement under a Land Use of “Tourism” is 1 space per 30m² of Total Usable Area plus 1 service vehicle space. As the GFA of the 6 proposed buildings totals 568m², a total of 19 car spaces plus 1 service vehicle space are required. An additional 8 spaces cannot be accommodated on the area of the site designated for this development.
- There is no demonstrated need for this development in this location. Tamborine Mountain would appear to be over-supplied with overnight accommodation at present – Refer: Queensland Globe (information.qld.gov.au) (accept the terms & conditions & click “get started”).

Additional comments: Attached/Not attached.

Name:..... Signature.....

Address:.....

..... Date.....

**Please ATTACH any personal comments and return this form by 4.30pm Thursday 29th July 2021
by hand to: Customer Service Centre at the Library OR by email to: mail@scenicrim.qld.gov.au**

Christmas in July

Special Local Offers

This July, through our "Christmas in July" promotion, we are doing our best to support local businesses, and hope that you will, too ...

Whether shopping for yourself or for others, we think it's a great idea to explore the variety of quality goods and services available to us here on the Mountain, or just a short drive away to our regional neighbours at Canungra, Tamborine Village, Coomera, even Beaudesert.

Your support is always appreciated, and vital to ensure that we will be able to enjoy this variety and convenience into the future.



Eagle Heights Butchery

OUR SPECIALS:
Hams \$14 Kg
Turkeys \$10.90 Kg

5/13-19 Southport Avenue
 Eagle Heights QLD 4272
 07 5545 1811



THE HAVEN
 HEALING CENTRE & DAY SPA

Bring a Friend For \$20

* Offer only available with 1 full price purchase, of our 1 hour Spa Package during the month of July

www.havendayspa.com.au
 92 Eagle Heights Road
 Tamborine Mountain
 (07) 5641 4188



15% Locals Offer!

3b/15 Main Street
 North Tamborine
 0413 453 901



sacred blends

Nourish - 100ml
 Day Face & Body Creme
& Calm - 100ml
 Spritzer

2 Products only \$50
 Retail at \$70

Call Sandra Hardie
 0433140865

Wilderflower
 & Wanderberries
 Specialty Cakery & Bakehouse

\$8 Coffee & Cake Deal

Shop 4, North Tamborine
 Shopping Centre
 15-17 Main Street
 QLD 4272
 m: 0401 032 540

CHRISTMAS IN JULY - DECORATIONS



Cauldron Distillery is celebrating with decorations and a **snow machine** providing a near real gentle falling snowflake effect, & offering our usual drink range plus an exclusive new cocktail ***Our very own Warmed Gin Old Fashioned!***

89 123 Hartley Road
Tamborine Mountain 4272
0433 160 265



PLUSGAS
LP GAS SUPPLIER
Ph: 07 3800 2080
plusgas.com.au

Our Special is
8.5kg BBQ Cylinder
Exchange **\$20**

**31 Anders St
Jimboomba**



Witchscents Organics your local store for all your skincare needs made in store. With a big focus on zerowaste & sustainability. So come and say hi & *meet the makers!*
8/120 Long Road



A big 'thank you' from the Scenic News to all who took part in our 2021 "Christmas in July" celebration!

(above and right) Our winner for Best Decorated Business was *The Handmade Cottage on Gallery Walk.*

(below) The main entry at *St Bernards Hotel*

(bottom left) *Wilderflower and Wonderberries on Main Street - Rebecca and Nicole Bennett*

(bottom right) *Angela's Pantry on Gallery Walk*



Pethers Rainforest Restaurant

Intimate, romantic dining experience

Open Thursday, Friday and Saturday evenings – quiet, private and very intimate setting, ideal for couples.
28B Geissmann Street
(07) 5545 4577



1



Tamborine Mountain Distillery

Over 300 international awards

Australia's most internationally-awarded distillery and liquor brand in the New Millennium. Manufacturers of vodkas, liqueurs, schnapps, eaux-de-vie. 7 days, till 4
10 Macdonnell Road
(07) 5545 3452



2



Rainforest Restaurant & Lounge Bar

Dine at our Restaurant in the Rainforest!

- Your choice: traditional or share plates
Great Atmosphere
- Fantastic Experience
- A must for all Foodies



Rainforest
restaurant & lounge bar

Corner Cedar Creek Falls Road
(07) 5545 1468

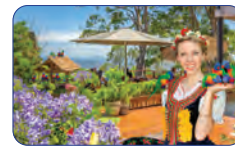
5



The Polish Place

Polish Restaurant. Cottages. Gallery. Coffee. Vodka. A true Polish Experience

With 180° views overlooking the Great Dividing Range, it's the ideal location to experience luxury accommodation, scrumptious Polish cuisine, beers and vodkas
www.polishplace.com.au
333 Main Western Rd, 5545 1603



4



Three Little Pigs

Bistro and Bar

Fine food and fabulous wine. Perfect place for relaxing and catching up with friends and family, or as a special treat.
13 Main Street
Nth Tamborine 07 5545 4484



7



Fox and Hounds Country Inn

Gold Coast's only Authentic English Pub

Share a hearty dining experience with friends and family, while soaking up the spectacular surrounds. Open for lunch and dinner 7 days.
7 Elevation Drive, Wongawallan
(07) 5665 7582



6



Club Tamborine

Visitors welcome

Your local on the Mountain: Full bar, Bistro, Gaming, Ubet, Keno, Fox Sports, regular live entertainment and bowls in a relaxed environment.
6-12 Beacon Road
(07) 5545 1308



9



Witches Falls Winery & Cellar Door

Tamborine Mountain's only working winery

Wines that shine with individuality and confidence. Enjoy wine tasting in our relaxed and picturesque setting. Locals receive members pricing. Open daily 10am to 4pm weekdays and 10am to 5pm weekends.
79 Main Western Road
(07) 5545 2609



8



El Burro Cantina

Come for the warmth, laughter and great MEXICAN FOOD!
• Fully licensed • Great for parties!
• Takeaway available

Flame Tree Plaza
16-20 Main Western Rd
North Tamborine 07 5545 4003



11



St Bernards Hotel

Idyllic location with sweeping views, spectacular, fine dining for every occasion. Perfect for weddings, functions, conferences. Come and be greeted by our two St Bernards, and enjoy real country hospitality!
101 Alpine Terrace – 07 5545 1177



10



Cauldron Estate & Distillery

Distillery – Vineyard – Bar – Events

Beautiful established vineyards and lush green meadows perfect for picnics, lawn games or kicking back for an afternoon of R&R. Enjoy our locally made spirits or drinks from the Cauldron Bar, relish our mountain-inspired 'Bar tucker' and picnic hampers, and even make your own bottle of gin in our distillery to take home.
89-123 Hartley Road, Tamborine Mountain Qld 4272
CauldronDistillery.com.au



14



Spare Part Solutions

Parts plus expert, personalised advice

We can supply parts for Automotive, 4x4, trucks & earthmoving, motorbikes, bicycles, general engineering, mowers, small machinery and more.
24 Main Street 07 5545 1988



12



Tamborine Mountain Pizzas

Dine-in, Takeaway, Delivery

Established in 1994, enjoy our signature dough prepared daily on site topped with a variety of fresh ingredients, many locally sourced.
4/11 Main Street
(07) 5545 3888



3



Tamborine Mountain Pasta

TAKE AWAY
OPEN 7 days:
11.30am – 2.30 pm lunch
5pm – 8pm dinner
Shop 1A/15 Main Street
(07) 5545 3795



13



Curtis Falls Café

Café, Ice-Creamery, Souvenirs & Sweets
A relaxed atmosphere with friendly service. Soups, sandwiches, burgers and grill menu. Enjoy coffee or Devonshire Tea, or ice cream with views of Curtis Falls Creek and rainforest. Ideal for families, locals and visitors to Tamborine Mountain. Breakfast, lunch, morning & afternoon tea. Pick up available.
2/8 Eagle Heights Rd (07) 5545 3003



21



LOCAL DINING, SHOPPING AND SERVICES



EAGLE HEIGHTS BAKERY

25 Southport Ave, Eagle Heights

15

Open 7 days - 9.30-5pm
(including public holidays)
14 year-old sourdough,
30 different breads & flours

5545 4011

Serving the community for 40 years



CREMA Lovers Cafe

20

All Day Menu - Breakfast, Lunch, Pizza, Burgers, Boutique Coffee, Cakes, Vegan & Vegetarian options

1-5 Eagle Heights Road
North Tambores
07 5545 1888

OPEN 7 DAYS

TAMBORINE MOUNTAIN COFFEE PLANTATION

On our property, we aim to provide a completely local experience. All of our coffee has been carefully roasted and blended by our team to highlight the flavour of the coffee we grow. Come and try it for yourself, and learn all about how we do it!

64 Alpine Terrace, Tambores Mountain
@tamboresmountaincoffee
www.tamboresmountaincoffee.com.au

17

07 5545 2777

GERMAN CUCKOO CLOCK NEST

18

Grandfather • Cuckoo • Mantel
• Wall Clocks • Watches

Watch battery replacement
and clock repairs.

OPEN 7 DAYS 10AM - 4PM

143 Long Road, Tambores Mountain
Ph: (07) 5545 1334 • info@clocks.com.au
www.clocks.com.au



Letters to the Editor

continued from page 11

preferred by some but are purely philosophical: they have no chance to be used. If the move will happen, then the Mountain will be part of one division in Gold Coast, instead of having its own (as now). But if that means that we will therefore 'sacrifice any influence on the future of our area', then no one in any of the bigger cities has any influence, which is of course far from true. And having our own councillor at Council has proven not to be any guarantee of influence anyway, given the experience of the past 15 years.

A third option as suggested (stay in Scenic Rim if they improve their behaviour) is only a choice if you don't like to make a choice. It is as if NASA has to choose its next destination: Mars, or Venus, or 'Venus, in case it becomes liveable for humans'.

Jaap Vogel

DESPITE THE SPIN, DEREK GOT MANDATE

We are very lucky to live in a country and have the right to vote. It means we have a say of who is elected to government, and hopefully keep them accountable.

However, there are many countries around the world where people are too lazy or simply don't care, and as voting is not compulsory, the minority decides.

I've read the Letters to the Editor in the *Scenic News*, and it seems the same few voices are constantly heard.

I believe the residents who wanted a say and who firmly hold a belief, voted in the plebiscite. And the result shows that.

The information was put before us for at least seven weeks, but we knew when we voted Derek Swanborough in as councillor what his agenda was. And before you retort, his primary vote was 31.48 per cent, a whisker shy of our Mayor's 33.82 per cent.

If you didn't vote, then that is on you. If you did, then the majority spoke and was heard, and Derek received a mandate from a super majority – no matter how you spin it. He relied on Australia Post who dictated the numbers and handled the distribution.

Well done Derek on your efforts, your work and dedication to our Mountain.

Alan Sableberg

348 SHARE THOUGHTS ON FUTURE GROWTH

A total of 348 residents have shared their thoughts and opinions on what the future of the Scenic Rim should look like after completing the council's initial survey for the region's first Growth Management Strategy which was available on Council's website earlier this year.

The purpose of the survey was to gain an understanding of the community's vision and priorities for the future growth of the region, including preferred housing types, residential lot sizes, jobs, infrastructure, facilities and services, to inform the Strategy.

"As forecast by the Shaping SEQ Queensland Regional Plan 2017, population growth in this region is set to increase from over 42,000 residents to more than 62,000 people by 2041," said Mayor Greg Christensen.

He said that to meet this demand, there would need to be more than 7600 new jobs created and around 10,000 additional dwellings, as well as essential infrastructure, services and facilities throughout the region.

"The Scenic Rim Growth Management Strategy will ensure we have a planning framework to guide and responsibly manage this growth until 2041 and help inform existing strategies and policies such as the Shaping SEQ Regional Plan and Scenic Rim Planning Scheme 2020.

"Council understands there are some residents who do not want to see high levels of housing and employment development in the Scenic Rim. However, this growth is part of the State Government's statutory planning framework and Council has to establish the most appropriate location and form in which the future growth will take.

"The draft Growth Management Strategy is planned to progress to public consultation in November this year and will offer the community another chance to provide feedback on the proposed strategy," he said.

More information on the Growth Management Strategy, including the development phases and delivery timelines, can be found on Council's website: www.scenicrim.qld.gov.au/gms



CASUAL SALES POSITION AVAILABLE

German Cuckoo Clock Nest is seeking an enthusiastic sales person to join our team at the clock shop on Gallery Walk. This is a casual position of approx. 4 days per week and has the following criteria:

- Sales experience essential.
- Excellent customer service and communication skills, both verbal and written.
 - Aptitude for negotiation
- Highly motivated, reliable and well presented.
- Proven track record in the sales environment.
 - Moderate fitness required.
- Must be available some weekends
 - Immediate start required.

Please email your resume to:
stef@clocks.com.au

GERMAN CUCKOO CLOCK NEST
www.clocks.com.au

TM BRIDGE CLUB

Results from last week

Mon 19th	N/S	Richard Booth & Dianne Hiles
	E/W	Peter Zaremba & Keith Bowman
Wed 21st	N/S	Denise Marrin & Cheryl Finlayson
	E/W	Wendy Christie & David Cowsls
Thut 22nd	N/S	Max Irvine-Brown & Fred EricseN-Miller
	E/W	Peter Zaremba & Keith Bowman

COVID NO BAR TO WEDDING EXPO

For the first time since the start of the COVID-19 pandemic early last year, Tamborine Mountain Wedding Expo was back in full swing on Sunday, strongly supported by vendors and visitors.

After a challenging year for the wedding industry, the Tamborine Mountain Wedding Group was celebrating its 20th anniversary.

The strength of the supportive weddings community ensured all the uncertainty associated with the pandemic was so much more manageable.

With COVID advice changing almost daily, the group still went

carefully full steam ahead with the expo, despite the border closures. A strong community atmosphere was felt by all as the local vendors showcased their award-winning services to potential couples.

“Tamborine Mountain hosts more than 500 weddings a year and even with COVID on our doorstep the weddings group is determined to keep Tamborine Mountain on the map and maintain its reputation as one of the most diverse and picturesque destinations to wed in south-east Queensland,” said spokesperson Rebecca Kesby.



GRILL MASTERS, FOOD LOVERS AND CAPTAINS OF FLAVOUR

CHEF DYLAN'S
Gourmet Food Co.

100% HAND MADE

www.gourmetfoodco.com.au

IML

Ian MacAllan
LAWYER
5545 4303

- Wills
- Probate
- Estates
- Enduring Power of Attorney
- Advanced Health Directives

40 Southport Ave Eagle Heights 4272

Tamborine Mountain
OPTOMETRISTS

Optometrist

Call us now for a consultation
5545 0277

17-27 Main Western Rd, North Tamborine

BEAUMONT CARE
Warm-Hearted Care, Your Way

Residential Aged Care,
Respite and Home Care Services
enquiries: 0499 779 877

NDIS enquiries: 0407 978 250

Career opportunities: 0448 800 953
jobs@beaumontcare.com.au

Clontarf • Kippa-Ring • Redcliffe • Rothwell • Wamuran • Mt Tamborine

Relationship Sanctuary
ON TAMBORINE

**COUNSELLING FOR INDIVIDUALS,
COUPLES & FAMILIES**

0401 517 243

Appointments in person or via video call.
Reasonable Rates.

linda@relationshipsanctuary.com.au



SATYA: TRUTH

It was a conversation on national radio that caught my interest. It was a discussion about how Russia has weaponised social media. They used this during Trump's election campaign and apparently are still dividing the public by distributing

false information, manipulating mainstream media and amplifying existing divisions using social media platforms.

The formula is fairly simple: In 2014, a Russian troll farm called the Internet Research Agency began to promote propaganda and target American voters with polarising messaging. The agency behaved like a savvy internet marketer, using the same tools and techniques that are common in digital advertising campaigns.

Creating campaigns on different platforms and targeting different subgroups using a sophisticated understanding of who uses the platforms, what they use them for and what messages might resonate best on those platforms - they manipulated the public. Authorities were/are justifiably outraged.

But what has this got to do with yoga? Well one of the rules of yoga (Patanjali's eight limbs of yoga) is a rule called Satya – which means truthfulness. Seems simple enough: speak and live a life of truth, and you should live a good life.

So why is living a life of truth so powerful and so good for you? Well, lying affects your physical body. Studies have shown that lying increases your breath rate and your heart rate. You start to sweat, your mouth goes dry and your voice starts to shake. Some of these physiological effects form the basis of the classic lie-detector (polygraph) test.

Researchers have also found that living a life of constantly telling lies can lead to an increased risk of cancer, obesity, anxiety, depression, addiction and poor relationships. The stress of maintaining this web of lies taxes you both physically and emotionally. Because one lie leads to another, you can be forced into a nerve-wracking cycle of lies that becomes harder and harder to keep track of.

So, this unethical Russian agency is manipulating social platforms and spreading lies. But did you know that only six corporations own 90 per cent of worldwide media? And these six corporations control everything you read and see in the media. Using complex algorithms they can manipulate news any way they like. So even "respectable" sources should be read and looked at with open eyes, otherwise you might be lied to.

Your body might be able to tell you whether that fact is true or fiction. Like in yoga class where we learn to sit with our discomfort, our unease and perhaps our sadness, next time something doesn't ring quite true with your deepest self, sit with it, practise Satya and see if it feels true. If not, seek other sources of information.

Books and studying world history are still my go to. Not quite current, but still a good source of free thought, learning and Satya.

Margot Wagner
Yoga Under the Bodhi Tree

(Find and like articles similar to this on my Facebook Page: Yoga Under the Bodhi Tree)

Relationships



YOUR TREASURE

What do you treasure? If something is of genuine value to you, there's no disguising it. The worth you place on the various things in your life is evident in your priorities.

In one of Arthur Conan Doyle's books, Sherlock Holmes throws a smoke bomb through a window while calling "fire". He waits for the occupant to exit carrying her secret, most valued treasure, which was the evidence Sherlock needed to solve the crime. People inevitably reveal what they value most by their actions. What would you grab if your home was on fire?

Treasure is anything we value above all else, and that which motivates us to action. Our treasure determines where we invest our time, energy and focus. For some people treasure means wealth, for others it's reputation, achievement, adventure or influence. For many, family is the most valued treasure in their lives. As we invest more of our life into our treasure, passion grows from our investment. The more we invest, the more passionate we become about that into which we invest.



This is particularly valuable information when it comes to our relationships. Shirley Glass, well-respected relationship researcher, identified what she called the Prevention Myth. That is, the mistaken belief that being loving and dedicated to your relationship will prevent your partner from having an affair or abandoning you. Wait a minute, isn't that what we are supposed to do? Yes, but investing into your relationship actually prevents you from having an affair or leaving your partner.

There is a common assumption that if someone is unfaithful, their partner must be neglecting them. The truth is that the unfaithful partner is usually the one not giving enough into the relationship. Research has shown that the partner who gives less is more at risk of infidelity than the partner who gives much, because he or she is less invested.

We can learn from this research that if we want to value something more, it begins with our investment. Passion follows investment. Too often, couples separate because the passion is no longer there, the spark has died. However, passion can be reignited by investing effort and intentionality. Think of it as a pilot light waiting for the opportunity to come to life again.

There are many things in this life vying for our passion. We can inadvertently get caught up in the hype, investing huge portions of our time into activities that we would rarely regard as our life priorities. Over time, they become more and more important to us at the expense of those things that were most important to us in the first place.

Don't lose sight of your true treasure. If you have lost your passion, start by becoming more intentional about where you invest your energy. Contrary to the message conveyed in 'reality' shows, passion is a product of our decisions. Decide today what your treasure is, make a significant investment and greater passion will be the result.

Linda Gray
linda@relationshipsanctuary.com.au
0401 517 243

Q&A with the Scenic News



Lauren Stevens

Off The Farm is a locally owned and run business in Canungra. Owned by Garry Hall, managed and run by Lauren Stevens, this little venture supports and uses only local and Queensland-grown produce.

What did you do before opening your business?

Before deciding to start a produce shop, Garry was/is a builder by trade. Lauren was/is a social media, public relations and events manager.

How would you describe Off the Farm?

We support local business, employ friendly staff, always fresh... lots of new and exciting items coming into the store daily. We have lots of new and inspiring things over the next few months, so watch this space...

What is it about your business that you love? What makes your business stand out from other, similar businesses? Is it a business that gives you satisfaction?

As manager, I love the interaction with the locals, I love getting to know everyone, their individual traits and the kids' little personalities. Customers also get a kick out of knowing when they walk in, that I know what smoothie or juice they're buying.

Our business stands out from the others because we support local. We

only use QLD produce if we can't get locally grown. We stock lots of products from locals, ranging from honeycomb, peanut brittle, beef jerky, herbs/spices and rubs, finger limes, milk and dairy, beef, a whole fridge of vegan range, raw and smoked garlic, and our honey is from the hives on Garry's farm. Can't get any more local than that!

What challenges have you had in business over this period of time?

Like all business, COVID-19 and lockdowns affected us, but we managed by offering home delivery and by staying open later hours to assist with essential workers needing fresh food.

What is the most bizarre or funny thing you have encountered in your business?

Fruit in the shape of odd and peculiar things: use your imagination. We had a pineapple named Wilson at one stage.

If you were not doing this, what would your ideal job be?

Retired in the Maldives... Professional sleep tester?

Interesting facts about yourself?

I've survived a sliced jugular. My anterior jugular was sliced inside from a previous surgery complication; had it been externally, I wouldn't be here

telling my story.

I also have very long fingernails and get comments every day... but I've had them long for over 20 years, so they are now just a part of me, I can't function without them.

What do you do for fun?

I (Lauren) love stand-up paddle boarding, camping, beach days, anything outdoorsy, but I also love wine nights with friends, eating out and being in the company of good people.

Garry is an avid car and truck enthusiast, who loves wakeboarding and waterskiing; he loves his camp fires, but also his relaxing nights at home.

Do you take holidays and if so, is there a favourite destination or activity?

I mainly holiday to Sydney, as my dearest friends are there (I'm originally a Sydney girl), but a weekend on the Gold Coast is an amazing stay-cation!

Final thoughts?

I'm that friend you probably shouldn't sit next to at a serious function: I dance like no one is watching, 'cause *no one usually is*, but I do get caught singing in the shop a fair bit.

I believe being beautiful has very little with how you look. Beauty comes from within.



TRAVELLING PLACES By Gina Storey

What an odd year this has been for travel – I think more bizarre than 2020, which fell into the ‘shock’ category whereas 2021 seems to be a year where we have all persevered in disbelief that this contagion is with us for so long and has been so very disruptive to our lives.

Travel within Australia has been enormously popular, with The Kimberley, The Red Centre, The Ghan and Indian Pacific all virtually sold out for 2021. Lots of Australians are taking the international travel ban opportunity to explore close to home. Unfortunately, our governments have made this somewhat tricky with the state border closures. I have had clients lucky enough to catch a period of time that has been open for travel, and they have loved every minute of it.



I was lucky enough to take a small group to North Queensland, to have a few days at a conference in Sydney and even a week in NZ to catch up with family. I have clients booked to travel all over Australia in coming months and let's hope that this all is allowed to happen. I know one thing for sure – everyone is keen to have a change of scenery and be out and about exploring.

Travelling Places is one of the few agencies to be appointed by Botanica to promote their fabulous journeys, escorted by specialist botanical guides and offering the traveller a small group environment and exclusive access to private gardens as well as the must-see botanic gardens. You may have been at the Garden Club over the years when I have brought Arno King and Ross McKinnon, who are enthusiastic specialist guides? Arno is taking a small group to Far North Queensland – please ask Travelling Places for details of this seven-day trip, starting in Cairns on September 1. There are a few spots available.

Another opportunity we have negotiated is The Kimberley 2022 with Silversea. The luxury expedition vessel, the Silver Explorer, will be here next year. With a maximum capacity of 144 passengers, this is a remarkable experience for a few lucky travellers. The Kimberley region is a raw and rugged wilderness made up of twisting coastlines, deep gorges and thundering horizontal waterfalls. Explore this remote north-west corner of WA – discovering age old rock art, speeding through tranquil waters searching for sea birds, gazing amazed at WA's highest waterfalls. Accompanied by Silversea expert team leaders, this expedition cruise offers the traveller an insight into our remote land.

The Travelling Places special departure from Darwin on 24 June includes return transfers from Tamborine Mountain to Brisbane Airport, return flights from Brisbane, one night pre-cruise hotel accommodation in Darwin and two nights post-cruise accommodation in Broome. All of the transfers are included. All meals and beverages are included. Guided zodiac land and sea tours and shore side activities led by the expeditions team are included. There are on-board lectures by highly qualified guides. The total cost is from \$14,850 per person twin share. This is a great deal.

Even in a country as big as Australia, The Kimberley leaves us in awe – a destination we all long to visit. Contact Travelling Places for details.

Phone 5545 1600; email travel@travellingplaces.com.au

NATURE NOTES

with Nadia O'Carroll

HI-TECH TRAVELLERS



The humpback whale (*Megaptera novaeangliae*) is an acrobatic species of baleen whale which has worldwide distribution in three main populations - Northern Pacific, North Atlantic and Southern Hemisphere. Although they travel vast distances, it appears that the populations rarely cross paths and are essentially distinct.

Whales range in size from 15 to 18 metres in length and weigh up to 40 tonnes; their main prey is krill and small schooling fish.

Humpback whales are social and sociable - they communicate, cooperate in feeding strategies, swim together in small pods, and unrelated males often escort mothers and calves. However, this species appears to have fluid social relationships rather than an obvious social structure. Recent long-term studies indicate that unrelated individuals have enduring associations. Observations suggest a more complex society than previously thought.

Annually, humpback whales complete the world's longest mammal migration - a return journey from spending summer in the cold, food rich waters of the polar regions to spending winter in warmer waters of the tropics where they mate, give birth and nurture their calves. Whales do not feed during the migration except for supplemental foraging. A recent study suggests that skin moulting and regeneration of skin metabolism may also drive migration in whales.

It is a challenge to study whales, and recent tracking analysis exhibited differences in individuals' departure dates and locations, speeds, routes and behaviours that were unexpected and did not line up with anticipated migratory parameters or triggers.

The deep, open ocean is a vast, featureless, sometimes turbulent blue environment, yet satellite tracking of individual whales show that they follow remarkably straight paths for weeks at a time, many deviating by one degree or less in journeys of thousands of kilometres. Earth's magnetism varies too widely to explain these straight arrow patterns.

Solar navigation is unlikely to provide a frame of reference to provide this level of accuracy. Scientists suspect that humpback whales use both geomagnetic and sun tracking and may also utilise stars and moon position to guide their course. Another mechanism may be sound - long distance songs may provide navigational clues or assist in coordinating movements. Whatever the exact explanation, these whales clearly use highly sophisticated navigation methods.

Intense commercial whaling has stopped, but humpbacks continue to face threats from humans - overfishing, exploitation of krill, plastic litter, pollution, boat strikes, ocean noise, entanglement including fishing gear and shark nets and climate change.

FOOD FOR THOUGHT

with Chef Dylan Gittoes

www.gourmetfoodco.com.au



BEEF ENCHILADAS

These little beauties are a weeknight winner the whole family will enjoy. If they like a bit of spice that is. I would rate this a 5/10 on the heat scale as by the time you load up with avocado and sour cream the heat really dies down. You can always reduce the amount of my Creole seasoning too if you want to tone it down a bit for the kids. I'm a huge believer in giving kids a bit of spice to develop their palates.

The beauty of this dish is you can whip up the whole thing in less than 30 minutes.

I love Mexican food. I find it so comforting and delicious, especially when it's cold outside and when you pull these out of the oven you will have plenty of hovering eyes on you. Enchiladas with their spicy, crunchy, gooey cheesy mouthfeel for me, have it all.

When I first went to visit my now wife in her apartment in Bristol, England this was one of the first dinners she made me, and boy was it good. Her "secret ingredient" that really fills out the beef mixture so you can make big, plump, generously stuffed enchiladas that are nice and juicy is refried beans. Old El Paso is my favourite brand.

This home-made enchilada sauce will beat the pants off any store-bought variety. Also make sure you go to the butcher to get your mince, as supermarket mince is way below par. Trust me, you will notice the difference in quality, water release and most of all taste.

Did you know? Most historians agree enchiladas were invented by the ancient Mayan culture. This delicious dish was first associated with the region of Mexico by the Yucatan in pre-Columbian days. Corn tortillas were a staple of the Mayan people and there is evidence to suggest that the first enchiladas were tortillas that had oven roasted fish rolled inside.

The enchilada is also similar to papadzules, a traditional Mayan dish, which also comes from the Yucatan region. In this creation, corn tortillas are coated in pumpkin seeds and then rolled around chopped boiled egg. They are then smothered in tomato-based sauce. This food was only served to the nobles and elites and was mainly eaten on festive occasions.

As the Spanish conquistadors moved their way across the new-found continent, they diligently documented the wide variety of foods the indigenous people ate. Tortillas, made from flattened corn bread were originally called tlaxcalli (good luck pronouncing that) so the Spanish conquistadors re-named it the tortilla. Throughout the later centuries, the Mexicans continued to refine and reinvent this dish and the enchilada can still be found in a wide variety of cookbooks to this very day. It was first mentioned in a Mexican cookbook published way back in 1831 titled *El Cocinero Mexicano*, which translates as The Mexican Chef.

You too can be part of this long tradition of Mexican-inspired chefs and add this wonderfully versatile dish to your repertoire. You won't be disappointed

ENCHILADA SAUCE

- 2 tbsp olive oil
- 3 tbsp plain flour
- 1 tbs CREOLE seasoning
- 500ml chicken stock
- 375 ml tomato passata
- 1/4 tsp each salt and pepper

BEEF

- 1 tbsp olive oil
- 2 garlic cloves minced
- 1 brown onion, finely chopped
- 500g beef mince
- 2 tbs CREOLE seasoning
- 1x 400g can refried beans
- 1x 400g black beans, drained

ENCHILADAS

- 8 tortilla wraps
- 150g grated pizza cheese, or more if you like melted cheese!
- coriander leaves, roughly chopped (garnish)

ENCHILADA SAUCE

- Heat oil in a large saucepan over medium heat. Add flour and mix to combine into a paste. Cook for 1 minute, stirring constantly.
- Add 125mls of chicken stock, whisk straight away then it will turn into a thick smooth paste very quickly.
- Add remaining chicken stock, passata and 1 tbs CREOLE, Whisk.
- Increase heat slightly to medium high. Cook for 3 to 5 minutes, whisking every minute or so until the sauce thickens to the



consistency of golden syrup. Remove from stove.

FILLING

- Preheat oven to 180C.
- Heat oil in a fry pan over high heat. Add garlic and onion, cook for 2 minutes.
- Add beef mince and cook for 3 minutes, breaking it up as you go. Add 2 tbs CREOLE.
- Cook for 2 minutes or until completely brown.
- Add refried beans, black beans, about 1/4 cup of Enchilada Sauce and cook for 15 minutes on low stirring occasionally then remove from heat.

ENCHILADAS

- Whack a bit of sauce on the bottom of a baking dish (stops sliding).
- Place filling on the lower third of a tortilla. Roll up then place in the baking dish, seam side down. Repeat with remaining filling and tortillas.
- Pour sauce over the enchiladas, top with cheese, bake for 10 minutes covered, then 10 minutes uncovered. Serve hot.
- Serve with avocado, sour cream, your favourite salsa, pickled jalapeños and a cold bottle of Corona (the beer).

hooked on books

SCENIC RIM LIBRARIES WELCOME

Patrons will need sanitise hands as they enter and provide their library card number or details (as per government directives).

NAME THE GAME

Join us every Wednesday afternoon at 4pm to reveal the game of the week, then stay and play!



We will bring board games to life, unearth old parlour games and battle our way through the weekly challenge.

Ages 8+ Wednesdays 4.00-4.45

BOOK CLUB

Your local library is the perfect place to join a book club. Read new titles, discuss viewpoints and potentially make new friends in the process.



Ask when your local book club meets by contacting us here at the library - 5540 5473



For lovers of puzzles - Sudoku, Crosswords, Codewords, Cryptic Crosswords and more!

Select Scenic Rim Libraries website and use the following

username and password to log in.

Username: ScenicRimLibraries
Password: puzzles4scenicrim

OUR EVENTS

STORYTIME & SINGSONG

Join us for stories & interactive songs and a craft pack to take home.

Bookings essential
0 - 5 years. 9:15
10:00 Monday

To join this session please phone 55405473 or email library.t@scenicrim.qld.com.au



BABY RHYME TIME

A fun interactive session of songs, rhymes, books and movement to foster your child's love of language. Suitable for parents/caregivers with babies to children under three.



Fridays 9:15 - 10:00
To join this session please phone 55405473 or email library.t@scenicrim.qld.com.au

DIGITAL DAYS

Are you keen to improve your digital skills or know someone who is?

Book a one-on-one appointment.

Thursdays between 10am and 12.

Book at Tamborine Mountain Library, or call us on 5540 5473



TAMBORINE MOUNTAIN LIBRARY NEWS by Friends of Tamborine Mountain Library

Follow us



Remember to check out the LIBRARY E-RESOURCES

Link from our website or download the app, and log in with your library card.

Books, ebooks and magazines
Movies, languages & puzzles.

A Justice of the Peace is available Monday, Wednesday and Friday 10 am - 12 pm

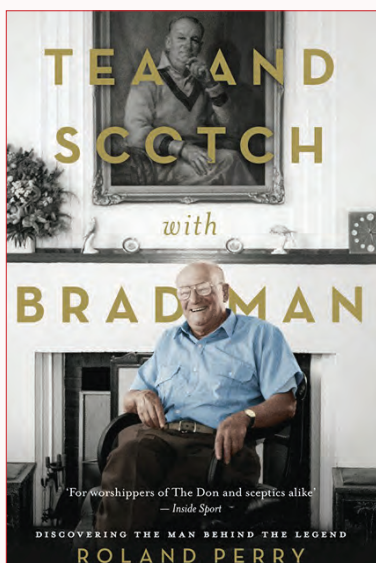


INTERESTING FACTS ABOUT BOOKS, LIBRARIES, AND READING



The first bookmobile in the world operated in Great Britain in the mid-19th century. Launched in 1857 by a philanthropist George Moore, the horse-drawn wagon served books from bookshelves mounted on the

outside. This "perambulating" library travelled between eight villages in the Cumbria County, in North West England.



Our Book Choice: *Tea and Scotch with Bradman*

by Roland Perry

Discovering the man behind the legend 'Conversations with Bradman were, like his batting, never dull and often unpredictable.' -- From the Introduction

In 1995, journalist and author Roland Perry wrote to Sir Donald Bradman requesting a face-to-face interview for a biography he was planning of the great cricketer. Surprisingly, the Don agreed. For Perry, those days spent speaking with Bradman at the former cricketer's quiet home in suburban Adelaide were the beginning of a conversation that continued for years. Throughout, the real Bradman shone, not only as a great sportsman but as a brilliant thinker, a man of integrity, a humourist and musician with a fondness for tea and a Scotch or two.

In *Tea and Scotch with Bradman*, Perry paints an intimate and revealing portrait of the man many regard as the greatest Australian cricketer of all time. Accompanying his engaging narrative are a selection of rare photographs taken by acclaimed photographer Dean Golja during Perry's initial interviews at Bradman's home, many of which have never been seen or previously published.

LIBRARY OPENING TIMES MON-FRI 9AM-5.30PM • SAT 9AM-12PM

Tamborine Mountain Library is proudly operated by Scenic Rim Regional Council.

CLASSIFIEDS

Bookshop & Art Gallery - Under the Greenwood Tree. Open 5 days 10 - 5. Closed Tuesday and Thursday Home deliveries 7 days. Book orders welcomed. 92 Main Western Rd Nth Tamb Ph.0424 586 066 P

Gardening, Mowing, Property Maintenance by friendly, reliable long-term mountain resident. No.1 Property Maintenance. Call Phil 0476 257 045 P

Music Lessons - Bass, guitar, piano. All ages. Have fun & online lessons available now. Ph Craig or text 0478 075 642 P

GRAPHICS & TUITION

GRAPHIC DESIGN/ILLUSTRATION SERVICE & TUTORING



GRAPHICS SERVICE: Business Startup – logos, business cards, letterheads, leaflets, stickers, etc. Quotes for design and printing (**all printing done locally by Coomera Print Hub**)

TUTORING & WORKSHOPS: Children's illustration/cartooning workshops. Tutoring graphic design working with Adobe Illustrator and Photoshop.

INFO: Call Heather on 0415 549 522 or email heather.dale@patchworkdog.com Examples on www.patchworkdog.com.



- Get your ad in front of more than 20,000 readers each week
- Free online exposure, and online advertising opportunities

Call or email

0417 238 238

advertising@scenicnews.com.au



SIGNS

GARAGE SALE SIGNS

Stand out from the crowd with attractive, professional-looking signs for YOUR Garage Sale. (spike/stand included) Signs are free to use, but require a \$10 deposit per sign (refunded when you return them). **Please inquire on 5545 5000.**

Please note: 2 days' notice required

POSITION VACANT

Shop Assistant for Bakery, Suit Year 12 school leaver or university student. Casual hours, weekend and weekdays. Call 07 5545 4011 Send Resumé to Eagle Heights Bakery on [facebook](https://www.facebook.com/eagleheightsbakery)



Yoga Under the Bodhi Tree – LIVE

YOGA CLASSES: Mon 9.30am Moriarty CC, Canungra. **Tues 9.30am, Fri 8am and Sat 9.30am** Zamia Theatre, Main St, Tamborine Mountain. **Wed 6pm** Creative Arts Centre, Wongawallan Rd, Tamborine Mountain. **ONLINE YOGA CLASSES: Tues 6pm, Wed 9.30am, Sat 7.00am.** For Online Classes text or email me: Margot **0428 137 391** or yogaunderthebodhitree@outlook.com. I will send you an email with a link. Very simple, very low tech. Come and join us! Hatha, Nada and Tantra Yoga. Contact: Margot Y.A (Australia) 0428 137 391. Transform your Life with Yoga.

TRIVIA

Mixed Bag



1. Who wrote *The Dogs of War*?
2. What was founded by Robert Baden-Powell?
3. Why is the Dutch House of Orange so-named?
4. What is the furthest distance you can get from the sea in the UK?
5. What kind of musical instrument is a Fender Broadcaster?
6. Who wrote *The Glass Lake*?
7. A 'Saanen' is a breed of which animal?
8. How many Brandenburg Concertos were composed by J S Bach?
9. What kind of political union was advocated by Oswald Mosley in 1949?
10. Queen Maud Land is to be found on which continent?
11. For which band was *A Funk Odyssey* a No 1 album in 2001?
12. The Walker Art Gallery is to be found in which English city?
13. Which organisation started with a meeting between a Bill Wilson and a Doctor Robert Smith in 1935?
14. Which fictional character has been played by Jeremy Brett, Peter Cushing and Basil Rathbone?
15. Which US comic actor was born Joseph Levitch?

ANSWERS PAGE 29

BUSINESS DIRECTORY – WHO TO CALL

ACCOUNTING

HALL HANNEFORD
 CHARTERED ACCOUNTANTS
TAXATION / BAS RETURNS
BUSINESS ADVICE • STRUCTURE SETUPS
SELF-MANAGED SUPERANNUATION
TAX PLANNING • BOOKKEEPING
 Shop 3/15 Main Western Road,
 Tamborine Mountain
 PH: 07 5545 2588
 www.accountingonthemountain.com.au

Eagle Taxation
 Accounting and Taxation Services; Tax Returns;
 BAS Statements; DIY Super and Auditing; ABN
 Applications; Tax Planning and Structure
 Advice; Non-Profit and Business Audits;
 End-of-Life Planning and Document Preparation;
 Commercial Agreements; Xero Cloud Accounting
36 Southport Ave, Eagle Heights
 ☎ (07) 5545 4458
 📧 office@eagletax.com.au

Lakehouse Accounting
 Let's talk about your business and tax concerns!
 Call Noel 0487 999 035
 for an appointment or email
 noel@lakehouseaccounting.com.au
 10 Coomera Gorge Drive
 Tamborine Mountain
 QLD 4272

AIR CONDITIONING & REFRIGERATION

+45 Years
TAMES
TAMBORINE MOUNTAIN
ELECTRICAL SERVICES
 Air Conditioning Service & Breakdown
 Sales and Installations
 at Competitive Pricing
Call Now 07 5545 7777
Servicing our customers for 45+ years
 Licence No. 69488 Arctick AU3560

EZY Freeze
 • Domestic Air-Conditioning
 • Commercial Air-Conditioning/
 Refrigeration
Call Steve
0431 697 302
 Best Rates - No Call Out Fee

AIR CONDITIONING & REFRIGERATION

EMIRG
 SERVICES
AIR CONDITIONING
COMMERCIAL REFRIGERATION
& MECHANICAL SERVICES
BRENDAN GRIMES 0419 009 643
 brendan@emirgservices.com.au emirgservices.com.au

ARBORIST

MOUNTAIN TREES
NICK ROUTLEDGE
 0438 176 775
 Qualified Arborist
 mountaintrees@live.com.au
Professional Tree Services

AUTOMOTIVE REPAIRS

TAMBORINE MOUNTAIN
Auto Clinic
Jason Bowles
 • Logbook Servicing All Makes Incl Euro
 • Specialist in Brakes
 • All Mechanical Repairs **RACQ**
 • Small Electrical Repairs
 • Sublet R.W.C & Air Conditioning
 41 Main St Nth Tamborine **Ph: 5545 1214**

On The Road
 EST. 2002
AUTOMOTIVE REPAIRS
 • Mobile Repairs, Logbooks & Servicing
 • RWC Safety & LPG certificates
 • Cars, Trucks, Trailers & Floats, Farm Eq't
 • Light & Heavy Diesel Repairs
 • COI & Measure Ups, Mod. Plates
 • Scan Tool Diagnostics
 FULLY EQUIPPED WORKSHOP AT TAMBORINE
SEAN 0409 291 053
 ACN 111 041 751

BLINDS & CURTAINS

TAMBORINE BLINDS
AND AWNINGS
 ✓ Awnings ✓ Blinds
 ✓ Security & Flyscreens
 ✓ 25 Years Industry Experience
RICHARD m: 0405 631 655
KENT h: 5545 0057

BOOKKEEPING

Innovative
 BEAN COUNTING
BAS and Bookkeeping Services
Focus on your business while we count your beans!
 XERO & MYOB Certified Advisor, QuickBooks, Receipt Bank
 & Hubdoc partnered. 20 Years of experience!
 E: info@ibcounting.com.au
 W: www.ibcounting.com.au
 P: 07 5543 4830
 M: 0400 395 805
 IPA INSTITUTE OF PUBLIC ACCOUNTANTS
 AUSTRALIAN BOOKKEEPERS NETWORK
 AUSTRALIAN BOOKKEEPERS ASSOCIATION
 BAS agent 25894697

Cultivate your Happy
harvest
 bookkeeping
 Bookkeeping,
 Payroll Admin
 & BAS Agent
 Call Kloe 0402 097 670
 hello@harvestbookkeeping.com.au
 www.harvestbookkeeping.com.au
 BAS agent 260911

BRICKLAYING

HOPE
 BRICKLAYING
 Brick and Block Work • Cottage
 • Commercial Construction
 • Retaining Walls and Fences
 Tamborine Local
 QBCC Lic 1302284
0449 622 639
 Jhbricklaying@hotmail.com

BUILDERS

AGENCY UNO PTY LTD - Builder
 LIC # QBCC 1203987
 Custom homes, alterations,
 renovations, extensions and decks.
 Advise and quote.
Call: Simon
Mb: 0422 532 397

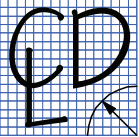
CRAMP BUILDERS
 Pty Ltd
 Architectural Homes Renovations
 Extensions Maintenance
 Commercial Works
 Nick Cramp - 0437 017 297
 Rick Cramp - 0407 701 875
 E: info@crampbuilders.com.au
 ACN 137 984 715 QBCC Lic. 1177904

All Aspects Of
 Building & Renovations
tbi
 TOTAL BUILDING IMPROVEMENTS
 • RENOVATION SPECIALIST
 • BATHROOMS
 • KITCHENS
 • FULL INTERNAL
Edward Odisho
 mob: 0418 788 029
 QBCC LIC - 15077381
 email: totalbuilding@gmail.com

Want to get YOUR
business noticed?
0417 238 238
 advertising@scenicnews.com.au

BUSINESS DIRECTORY – WHO TO CALL

BUILDING DESIGN



CAMERON DESIGN LOGIC
 Adam Cameron
 0414 807 265
 camdunpl@gmail.com
 QBCC 15189980

BUILDING DESIGN & PLAN DRAFTING HIA GreenSmart PROFESSIONAL

CAR DETAILING

CAR DETAILING – MOBILE SERVICE
Ian Garvie
 JP (Qual)
 Qld Water Comm. & Commerce Qld
 REGIST. WATER EFFICIENT OPERATOR No. 2238
0409 962 348
 Health Regulations strictly adhered to



CAR REMOVAL

FREE CAR REMOVAL
 Paying for some cars and 4x4.
 Can ring for an obligation-free quote on your car
0438 761 669

CARPENTRY

AGENCY UNO PTY LTD - Carpenter Builder
 LIC # QBCC 1203987
 Formwork, framing, fix outs, pitched roofs, staircases, decks, railings, custom hardwood bench tops, renovations.
 Advise and quote.
Call: Simon
Mb: 0422 532 397

CHIMNEY CLEANING

SOOTY'S CHIMNEY CLEANING SERVICE
 Dust-free cleaning - all areas
 sootyschimney@optusnet.com.au
 www.sootyschimneycleaning.com.au
0438 733 579



CLEANING

EAGLE HEIGHTS CLEANING SERVICES
 Commercial Cleaning
 House Cleaning ~ Weekly/fortnightly
 Windows • Bond Cleans
 Carpet Cleaning
MOBILE 0400 452 054
Cleaning the Mountain since 2001

Answers to TRIVIA from page 27

1. Frederick Forsyth, 2. The Boy Scout movement, 3. Originated from the town of Orange in France, 4. 74 miles, 5. Electric guitar, 6. Maeve Binchy, 7. A goat, 8. Six, 9. A European Union, 10. Antarctica, 11. Jamiroquai, 12. Liverpool, 13. Alcoholics Anonymous, 14. Sherlock Holmes, 15. Jerry Lewis.

COMPUTERS



GRANT I.T. SERVICES
 MasterCard
 VISA
 efpas

0410 559 136
CAMRON GRANT
 grant.it.services@gmail.com

Professional & reliable
ON-SITE TECH SERVICE
 for your home or business

PC, Apple or Smart Devices - Repairs - Installations - Upgrades - Networking - Virus Removal & More
LOCAL & SAME DAY RESPONSE



COMPUTEX SOLUTIONS PTY LTD
 Onsite in your Home or Business - Installations - Repairs
 Upgrades - Virus Removal - Networking - Backups & more
 Supporting PCs / Macs / Tablets / Smartphones
 call Drew Haldane **0414 014 054**
For all your computer needs

DENTAL PRACTICE

DENTURE CLINIC

Joe Russell
 Registered Dental Prosthetist

OPEN
 for all your denture requirements
 www.tamborinedentures.com
5545 3128
 Mon-Fri Every week (excl. holidays)
 After-hours appointments available
 Shop 10/17 Southport Ave
 Tamborine Mountain

CONCRETE

NDC CONCRETE
 TAMBORINE MOUNTAIN
 Specialising in:
 • Driveways
 • Patios
 • Shed Slabs
 • Pool Surrounds
 • Concrete Benchtops
 QBCC lic. 15131788
NATHAN CUMBERS 0481 387 007

DRESSMAKING

JULIA SINGH
 FASHION AND TEXTILE DESIGNER
 • DRESSMAKING
 • PATTERNMAKING
 • WORKSHOPS
 • ALTERATIONS
 TAMBORINE MOUNTAIN
0467 398 872
 HSINGH@WESTNET.COM.AU



DRIVING LESSONS

TAMBORINE DRIVING SCHOOL
Auto and Manual
L 0431 857 356
Nicola Durkan
 Qualified Driving Instructor
 Free Keys2drive lesson
 www.tamborinedrivingschool.com



RED LINE
 TAMBORINE MTN DRIVING SCHOOL
 Accredited Driving Instructor
 Long time local resident
Phone Grant 0478 225 853
 Member Aust Driver Training Association

Suzuki Swift Automatic
 Free keys2drive lesson



EARTH MOVING

COLES earthworks
Excavators Bobcats Trucks
 • postholes • pads • trenching • tank holes
 • clearing • burnoffs • landscaping
Specialising in: DRIVEWAYS
Ph: 5545 1979
 Making the earth move for you on Tamborine Mountain



FREE QUOTE CALL 0413 941 172
 30 YEARS' EXPERIENCE IN ALL ASPECTS OF EARTHMOVING
DANNY'S DIGGERS
Bobcat & Excavator Hire



GRAYS EARTHWORX

5 tonne Excavator, 10 m² Tipper
 All Excavations, Postholes, Rock Walls, Sand, Soil, Gravel
 Reliable - Good Rates
PH: GRAY 0431 243 810

OUTLAW mini digger services

0422 917 830
 • Access From 830mm
 • Garden Removal
 • Turf/Slab Prep
 • Landscaping
 • Trenches
 • Post Holes
@outlawminidiggerservices



BUSINESS DIRECTORY – WHO TO CALL

ELECTRICAL

Bob's Services

Gary Hamblin
Licenced Electrician
25 Years Experience

0413 278 743
thezoo5@bigpond.com



Lic. No. 71041



TAMBORINE MOUNTAIN ELECTRICAL SERVICES

Competitive Pricing and
Guaranteed Work from your
local Master Electricians

Call Now 07 5545 7777

Servicing our customers for 45+ years

Licence No. 69488

Arctick AU3560



ALL YOUR ELECTRICAL NEEDS FOR
RESIDENTIAL & COMMERCIAL
~ COMPETITIVE PRICING ~
Electricians that provide fast, tidy,
professional service

- New builds
- Renovations
- Upgrades
- Air conditioning
Installations

Call us on **1300 153 726**
admin@knightsselectrical.net.au



Knights Electrical Contracting (QLD) P/L * Licence No: 65556 (QLD)

FIVE STAR SECURITY & ELECTRICAL

Lic. No. 59907

ELECTRICAL CONTRACTORS

Domestic • Commercial • Repairs
• Renovations • Upgrades

Phone: **0418 715 380**

SKS Electrical Pty Ltd

Lic No. 73960

Stuart Spalding

0413 435 708

skselectrical11@hotmail.com



Michael Ruttle
0422 882 719
Ruttle@interlectrics.com
Lic:100994

Electrical Installations
New & Renovation
Phone and Data
Fair Prices &
Professional Service
**Local to the
Mountain**

ENGINEERS



GENERAL ENGINEERING
MILLING AND TURNING SERVICE
MIG WELDING & LIGHT FABRICATION
4ST SHOP PRESS
TRAILER AND HORSEFLOAT REPAIRS
OVER 30 YEARS EXPERIENCE

NO JOB TOO SMALL
FREE QUOTES & FRIENDLY ADVICE
FREE PICKUP & DELIVERY TAMBORINE VILLAGE
AND SURROUNDS

B.J. BARNARD
0457845458
BEEZKNEEZENGINEERING@YAHOO.COM



ACS Engineers

CIVIL | ENVIRONMENTAL | PROJECT MANAGEMENT

07 5541 3500

*Providing Professional Engineering &
Civil Design Services to the Scenic Rim*

www.acsengineers.com.au
admin@acsengineers.com.au

FIREWOOD

TD McNEILL QUALITY FIREWOOD

Split, Dry 100% Ironbark by the Tonne
18 Years in Business Locally

When Only the Best Quality will Do!

Phone Trent **0457 244 525**

TAMBORINE MT FIREWOOD SUPPLIES

- * FREE DELIVERY
- * SEASONED TIMBER
- * PROMPT SERVICE

PH: 0418 980 862

Adam



Aged Western Red Ironbark

From \$180 m³

Phone Wayne Kiehne **0419 768 959**

FITNESS & GYM

JOIN YOUR
LOCAL GYM

ACCESS AVAILABLE 24/7
Personal Training & Classes
Follow Facebook@MainFitness
OR www.mainfitness.com.au

8/39 Main St North Tamborine
5545 4774

24/7

MAINFITNESS



FITNESS & GYM



**24/7
Community Gym**
for all levels of fitness

Contact **Natasha**
if you are interested
in joining.

Mobile: **0408 739 844**

TRIATHLON CLUB
16 BEACON ROAD,
TAMBORINE MOUNTAIN

GARAGE DOORS & GATES

Adept Garage Doors & Gates



SPECIALISING IN:
Servicing, Repairs, Maintenance,
Installation, Automation & Remotes.
Quality Service, Workmanship & Products

24/7 Emergency Repairs

Ph: **0401 363 757**

www.adeptgaragedoors.com.au



GAS SUPPLIES



CALL FOR AMAZING WINTER SPECIALS!

- No setup fee
- Friendly service
- Competitive prices
- Talk to a person
- Same or next day
delivery



PH **3800 2080**

PH **5548 7100**

plusgas.com.au



Joyan Household Gas

YOUR FRIENDLY LOCAL SUPPLIER

We supply and deliver household gas cylinders
No Rental Charges No Lock In Contracts
No Delivery Fee

Call John **0424 486 986**

HAIRDRESSING



Hair by Melissa

- LADIES • MENS • CHILDREN
- Cutting • Colouring • Styling

Complete In Home Hair Service
Stuck Indoors - I Come to You

0416 825 465

HANDYMAN

Craig the Handyman

For any odd jobs you have wanted done

- Affordable • Reliable • Quality work
- 30 Years Experience

Not your average handyman!

0478 075 642



BUSINESS DIRECTORY – WHO TO CALL

HANDYMAN



Can-Do Handyman Services
Allan Pyne

**Commercial – Domestic
Home & Building Services**

EVERYTHING IS POSSIBLE
From termite damage to
welding repairs & fabrications
Need it done properly? Call ...

0403 067 771 allanspyne@gmail.com

HARDWARE



**TAMBORINE VILLAGE
TRADERS**

HARDWARE – PLUMBING – PRODUCE
SADDLERY – GARDENING – PAINT

M-F 7.30 to 5.30 Sat 7.30 to 3pm Sun 7.30 to 1pm

Ph: 07 5543 8822 *Christina*
Fax: 07 5543 8866 5 Leach Road
Email: christina@tamborinetraders.com.au Tamborine QLD 4270

LANDSCAPING & MOWING

Affinity Landscapes

Is your garden ready for spring & summer entertaining?

Would you like to attract wildlife?

Do you want envious friends & neighbours?

Local horticulturalist & lic'd structural landscaper

- Design • Water features • Stonework • Planting
- Paving & retaining walls
- Contemporary, native & formal gardens

MOB: 0411 805 589 – QBCC1115404

Dependable Mowing & Kanga Mini Loader Hire

We've Got Your Property Covered!

Small & Large Acreage Mowing
Zero Turn Catching/Mulching Mower 4WD &
6WD Steep Slope Mowers/Slashers Lawns
Maintenance – Aerating, Dethatching,
Over Seeding, Fertilising, Spraying
Back Yard Earthworks, Trenches,
Soil & Mulch Shifting
Post Holes, Landscaping

**Phone/Text Ash Fully insured
0430 110 055**



**LANDSCAPE
SUPPLIES**

NOW BIGGER, BETTER, CLOSER!

5545 3390

Large blocks for retaining walls or heavy-duty control solutions
bagged fertiliser * bagged mulches * crusher dust *
drainage gravels * roadbase * decorative gravels * soils
* mulches * concrete blend * rocks * sleepers * stepping
stones * sands, barks * turf

PLUS MUCH MORE
85 Hartley Road, Nth Tamborine
TUESDAY – SATURDAY 9AM–3PM



TAMBORINE TURF
(Est. 1966)

Landscaper & Laying Service Available

Growers & Suppliers of:

- Wintergreen Couch • Buffalo Grass • Kikuyu Turf

Farm Pick Up or Delivered – Inspections Invited!
(Weekend pickup must be ordered by noon Friday)
tamborineturf.com.au • tjyore@optusnet.com.au

Tom 07 5543 6133 • Office 0423 924 692

LOCKSMITH



**Paul's
Locksmith
Service**

- ✓ Over 35 Years of Experience
- ✓ Master Locksmith Since 1989
- ✓ Prompt & Reliable Professional Service at Sensible Prices
- ✓ Scenic Rim Resident

Residential • Commercial
7am - 7pm • 7 Days A Week

Call Paul 0439 355 411
paulslocksmithservice.com.au

MOWING & GARDENING

GREENWOOD PROPERTY MAINTENANCE

- All lawns – small blocks to acreage
- Hedge trimming
- Brushcutting
- Rubbish removal
- Gutter cleaning etc

PHONE JOHN 0431 953 126

PAINTING



**ALL SURFACE
PAINTING P/L**

- Re-paint Specialists
- Specialise in Timber Restoration
- New Projects Welcome

JOHN RYAN
M: 0414 377 474
E: allsurfacepainting1@gmail.com

YOUR LOCAL INTERIOR & EXTERIOR PAINTER



**THOBS
PAINTING SERVICES**

Domestic
Commercial
Industrial
Body Corp
No Job Too Small

Phone Thobs 0455 308 318
thobspaintingervices@gmail.com
OBLIGATION FREE QUOTE



**VINCENT'S
PAINTING SERVICES**

- Interior/Exterior Painting
- Roofs & Decks

QBCC 1090914

5545 0098 or 0409 879 184

CJR Queensland

Painting and Maintenance Services

Colin Rose
0414 818 318
cjrose@bigpond.net.au

PAINTING

*Painting
Contractors*

RESIDENTIAL & COMMERCIAL

Gary 0438 175 069
Email: garywferigo@hotmail.com

FREE QUOTES • PROMPT SERVICE



Lowrie Painters

QBCC: 1024341
Interior – Exterior
Quality finish – Mountain Local

Call Matt for a competitive quote

0422 948 753

lowriepainters@gmail.com painter-goldcoast.com.au

PANEL BEATER

ALLAN HAYES
TAMBORINE MOUNTAIN
PANEL & PAINT

PH: 5545 2319
Mob: 0419 735 874

Private and insurance work
Total Car Care

FREE QUOTES WINDSCREENS
PICK UP BRAKES
DELIVERY RUST
FOR R.W.C.

1 HAYES RD
OFF TAMBORINE OXENFORD RD

PEST CONTROL

EDGE PEST CONTROL

- Termite inspections
- Termite treatments and
- General pest control services

QBCC Lic. 1215067
Pest manag't lic. Pmt-0-11839

Danny
25 years in the industry **0421 642 273**



**EAST COAST
building & pest**

Your local, trusted, family owned
and operated team

- Building and Pest Inspections
- Termite Inspections
- Termite Management
- Pest Control

1300 910 917

admin@eastcoastbuildingandpest.com.au
www.eastcoastbuildingandpest.com.au

BUSINESS DIRECTORY – WHO TO CALL

PEST CONTROL

Safe Effective Treatment of ALL PESTS

Termite inspections using the latest technologies: Thermal Image Camera, Termatrac etc., and all aspects of Termite prevention and eradication.



END-A-PEST

Exterminators

Over 30 Years' Exp.

Fully Licenced & Insured QBCC 15023710

5545 3957 or 0407 590 790

PET FOOD & SUPPLIES



the **PET FOOD DUDE**

Your local Pet Supply Store

- Leading brands of Dog & Cat food
- Tick control
- Collars and leads
- Dog and cat beds
- Treats of all kinds
- Accessories & much more!

TRADING HOURS : MON-WED, FRI

9AM - 1PM & 3PM - 4:45PM

THURS 9AM - 4:45PM

SAT 9AM - 12PM

45 Main Street, North Tamborine

07 5545 0341

The-Pet-Food-Dude

PHYSIOTHERAPY

Physiotherapy & Sports Injury Clinic

Gary Brooks

tel: 07 5545 0500

16-18 Main Western Rd, Tamborine Mountain

PHYSIQUE PHYSIOTHERAPY

2/10 Main Street, PO Box 102
North Tamborine, QLD 4272

5545 1133

www.physiquehealth.com.au

PICTURE FRAMING & PRINTING

vikingframer.com



(07) 5545 2402 0449 250 545

PLASTERING

Gyprock, ornate & suspended ceilings,
fancy cornices, ceiling roses.

All Aspects of Trade

Phone **BRETT CLEARY**
5545 0115

PLUMBING

ALL-WAYS PLUMBING Lic No 745184

Specialising in:-

- Maintenance
- Plumbing
- Roofing
- Draining
- Gasfitting

Ph: Dave Angel at Nth Tamborine
Ph: 5545 2369 all hours
Mobile No: 0419 677 008

COBRA PLUMBING & Drain Clearing P/L QBCC 73572

Maintenance Services
Renovations • No Job Too Small

Mark: 0419 655 802 Local Resident

Hot Water Install & Repairs Solar, Electric & Gas.

Trust the family owned local
Best service & price!

Ph: 5539 6820

**TODD'S
PLUMBING
& ELECTRICAL**
www.toddsplumbing.com.au

PUMPS

MP Mountain Pumps

For sales, service & advice you can trust ...

House | Filtration | Irrigation | Bore

PHONE 5545 0555 and 5545 4100

We supply & repair PUMPS

- Bore pumps • House Pumps
- Pool Pumps • Grey-water Pumps

IRRIGATION & WATER SPECIALISTS

Sales & service
38 Main St, Nth Tamborine
(2 doors from POST OFFICE)



Next **DEADLINE:**
July 30, 2021

REAL ESTATE

Professionals Serendipity Real Estate



Team – Heleen & Ton
0424 591 011 0424 591 012

heleen@Professionals.com.au Ton.Wolf@Professionals.com.au
5545 5000, 10-12 Main St, Tamborine Mountain
www.ProfessionalsTamborineMountain.com.au

Professionals Serendipity Real Estate



Linda Hogan
0414 300 558

linda.hogan@professionals.com.au

5545 5000 10-12 Main Street, Tamborine Mountain
5543 6444 2205 Beaudesert-Beenleigh Rd, Tamborine

Professionals Serendipity Real Estate

TANIA AMY SARAH



0428 654 000 0474 315 000 0429 001 013
Tania Lindner Amy Orr Sarah Lewis

10 - 12 Main Street, Tamborine Mountain, 4272
www.ProfessionalsTamborineMountain.com.au
2205 Beaudesert-Beenleigh Road, Tamborine, 4270
www.ProfessionalsTamborine.com.au

07 5545 4000 07 5543 6444
Mountain Office Tamborine Office

Property Management
The best team to manage your investment

Professionals Serendipity Real Estate



Team Erin & Monique
0427 078 757 0429 004 840

erin.mcgee@professionals.com.au
monique.clemens@professionals.com.au
5543 6444 2205 Beaudesert-Beenleigh Rd, Tamborine
www.ProfessionalsTamborine.com.au

BUSINESS DIRECTORY – WHO TO CALL

REAL ESTATE

Professionals Serendipity Real Estate



Team Deb & Mark

0409 210 362 0407 292 036

mark.inwood@professionals.com.au

5543 6444 2205 Beaudesert-Beenleigh Rd, Tamborine
www.ProfessionalsSerendipityRealEstate.com.au

Professionals Serendipity Real Estate



Team Michael & Diane

0434 718 162 0424 653 316

michael.kratzke@professionals.com.au

diane.pihl@professionals.com.au

5545 5000 10-12 Main Street, Tamborine Mountain
www.ProfessionalsSerendipityRealEstate.com.au

Professionals Serendipity Real Estate



Elizabeth Stirling

0400 449 978

elizabeth.stirling@professionals.com.au

5545 5000 10-12 Main Street, Tamborine Mountain
www.ProfessionalsTamborineMountain.com.au

Cherie Todd
0411 466 442



RayWhite

Shop 6,
9-13 Main Western Rd
North Tamborine

07 5545 1303

cherie.todd@raywhite.com
www.raywhiteruraltamborinemountain.com.au

Next EDITION:
August 5, 2021

REAL ESTATE

Louis Bartle
0491 642 980



RayWhite

Shop 6,
9-13 Main Western Rd
North Tamborine

07 5545 1303

louis.bartle@raywhite.com
www.raywhiteruraltamborinemountain.com.au

EXCLUSIVE SALE PROPERTIES

Thinking of selling?
call me
Now

KONRAD GALLAHER
0435 99 66 44

LOCAL Independent Agent

TESTIMONIALS

We are extremely grateful for his excellent work and are more than happy to strongly recommend Konrad, Lewis and Liz.

Many thanks Konrad for not only being our agent, but also for becoming a kind friend, Paul and Joy.

30 + YEARS LOCAL RESIDENT
30 + YEARS SALES EXPERIENCE

konrad@exclusivesale.com.au
exclusivesale.com.au

Harcourts Scenic

Scenic Rim Real Estate

scenic.harcourts.com.au
tamborine@harcourts.com.au

07 5543 8525

It is about people,
it is all about you.

REMOVALS/HAULAGE

Local Country Vic Palmer Interstate Pre-packing

BEENLEIGH REMOVALS

Incorporating Tamborine Mtn Removals
Ph: 07 3287 4326
Mobile 0408 743 244

ROOFING

Martin Foster QBCC 57756

Leak Specialists
FOSTERS ROOFING & GUTTERING

Your local Tamborine roofer. Over 35 Years' Exp.
Roofing, Guttering, Leaf Guard, Whirlybirds
Leaks and Maintenance
Ph 0417 748 073 Office 5543 8310
fostersroofingptylt@bigpond.com

AGENCY UNO PTY LTD - Builder
LIC # QBCC 1203987

Repairs and replacement of roof, gutter, downpipes and timber work.
Advise and quote.

Call: Simon
Mb: 0422 532 397

SEPTIC TANK CLEANING

Septic Solutions QLD
Locally Owned & Operated

Pumping & Cleaning of Septic, Sullage and Holding Tanks
Grease Traps & Sewerage Treatment Plants

PH: Tony 0439 430 242
After hrs: 07 5543 0242

POWER PUMPING
DOMESTIC SERVICES

Treatment Plants Septic Tanks
Sullage Tank Grease Traps
Servicing & Repairs

T 55452692 M 0408633260
www.yoursepticssystem.com.au

SIGNWRITING & AUTO ART

Auto Signs Mountain Resident

SHOPFRONTS
CAR, TRUCK, BOAT WRAPPING
VEHICLE SIGNS
LIGHTBOXES
BANNERS
A-FRAMES
DIGITAL PRINTING
BUSINESS CARDS
FLYERS etc
DESIGN

Call Chris
0410 058 204
autoartsigns@bigpond.com
GOLD COAST - MT TAMBORINE - CANUNGRA - BEAUDESERT

SKIP HIRE

TAMBORINE SKIPS

2-12m³ (cubed) bins
available, domestic or commercial

Book online or phone: 0421 507 303
admin@tamborineskips.com.au | www.tamborineskips.com.au
Locally owned and operated

Want to get YOUR business noticed?

0417 238 238

advertising@scenicnews.com.au

STORAGE

ALL TAMBORINE STORAGE

108 MAIN WESTERN ROAD
TAMBORINE MOUNTAIN
PHONE 0417 001 536

SWIMMING POOL SERVICE



For sales, service & advice you can trust ...

PHONE 5545 1126

- Sales, Service and Installation of Pumps, Filtration, Heaters & Cleaners.
 - One off and regular Pool & Spa servicing
 - Pool Chemicals
 - Small Motors and Machinery Servicing
- Monday – Friday 8:30am to 4:30pm Saturday – 8am to 1pm
Closed Sunday & Public Holidays
Shop 2/24 Main St, Nth Tamborine

TELEVISION

JUSTRITE VIDEO SERVICE

SPECIALIST ANTENNA INSTALLATIONS
SATELLITE TV AND DIGITAL RADIO
HOME THEATRE • EQUIPMENT SETUP
WI-FI • TV, PHONE & DATA POINTS

32 Years Experience **Bruce Howsan** Lic No 71342
Ph: **5543 8374** Mb: **0438 761 595**

TILING

Tiling

QBCC LIC. 69815

Adam Sander
0417 616 307

Wall & Floor Tiler

Servicing the Scenic Rim for 10 years

- New & Renovation Work
- Wet Areas & Waterproofing

Peter Himberg 0412 263 556



QBCC: 56316
ABN 46 749 809 882

TREE SERVICES

Batchelor & Sons

LAND CLEARING
STUMP REMOVAL & EXCAVATION

- 24/7 Tree Arborists
- 28+ Years of Experience
- We Care for Your Trees

Call Us **0419 686 908**

Let's talk about your tree care needs!

TREE SERVICES

Tamborine Mtn

Affordable



Tree Service
0418 980 862

Removal & Trimming
Chipping & Stump Grinding
ADAM ROUTLEDGE

TYRES

TAMBORINE MOUNTAIN TYRES
4/39 MAIN ST 5545 2111

- AGRICULTURAL
 - TRACTOR
 - TRUCK
 - NEW WHEELS
 - TYRE REPAIRS
 - FREE TYRE SAFETY CHECK
 - FREE AIR IN YOUR TYRES
 - WHEELBARROW
 - RIDE-ON
 - ATV & QUAD
 - WHEEL ALIGNMENT
 - TUBES
- Find us on **Facebook**
tamborinemountaintyres.com.au

VET SURGERY



Tamborine Mtn
24 Main Street
North Tamborine
5545 2422
all hours
Mon-Fri 8am-6pm. Saturday 8am-1pm
After Hours Emergency Service Available



Canungra
Cnr Pine Road & Franklin Street
5543 5622
all hours
Mon-Fri 8.30am-5.30pm. Sat 8.30-11.30am
After Hours Emergency Service Available



Yarrabilba
Cnr Wongawallan Dr & Adler Circuit
3180 3096
all hours
Mon-Sat 8am-6pm. Sunday 9am-12noon
After Hours Emergency Service Available

BALANCE VET



BALANCE VET
REHAB

- Housecalls
- Conventional Medicine
- Physical Rehab
- Acupuncture
- Chiropractic

0431 263 728

WATER SUPPLIES

PONY EXPRESS



MOUNTAIN WATER

Est 1985 - Maurice & Debbie
Friendly, Reliable Delivery

\$190 per load

BSC Approved

7 DAYS A WEEK

Ph: 5545 3935 or 0417 644 498



Quality Mountain Water

100% UV Filtered



Lic. approved by SRRC

Also Gravels, Sands, Soils

Roadbase Tipper Hire

Michael & Odette Johanson

Ph **5545 2225**
0407 718 203

WATER TANK CLEANING & REPAIRS



THE **H2O TANK DOCTOR**

Lauchlan McConnell

QBSA 062446 (Est. 1988)

www.theh2otankdoctor.com.au

- Water Tank Cleaning & Repairs
- Minimum water loss cleaning systems
- Water filtration solution "Roof to Tap"

Servicing all areas • Free quotes & advice most areas

Ph **5545 3693** or **0407 649 659**

WEDDING VIDEO SERVICES

Brisbane-based Videography, specialising in wedding films that capture the natural love & laughter of your day! Also servicing Sunshine Coast & Gold Coast regions. T&C's may apply



www.facebook.com/aleishagracefilmandphoto/

vimeo.com/aleishagracefilmandphoto

WELDING & FABRICATION

ASA
MOBILE WELDING & MAINTENANCE
asawelding71@gmail.com ABN 99 489 022 051

MOBILE WELDING and FABRICATING

EXPERIENCED IN (BUT NOT LIMITED TO):

- Mobile plant & machinery maintenance & repairs
- Farm fence strainer posts & corners custom-built on-site
- Cattle rail fence lines or stable dividers
- Structural steel fabrication & erecting, Shed erection

FULLY INSURED, FULLY MOBILE ONSITE WELDING SERVICE
PLEASE CALL OR TEXT LEX ON 0423 668 542

0423 668 542

WELLNESS AND HEALTH



EAGLE HEIGHTS

Sally Glenister
REFLEXOLOGIST

21 years' experience

0438 735 908

www.sallyglenister.com





Councillor's Comment

VIRGINIA WEST
DIVISION 3

END OF AN ERA

It has been with great sadness that we all as residents of the area acknowledge the very sad passing of John Wilson from Canungra Pharmacy who has attended to his much-loved community with such kindness and caring over many years.

John was one of life's true gentlemen who was always ready to chat with his customers and I know our hearts and thoughts go out to John's wife Jo and his family. This is the end of an era in Canungra. I did send John and his family a letter on behalf of our community, both past and present, on his recent retirement and sale of the pharmacy, thanking him for his incredible contribution to the health and wellbeing of so many over the years.

OLYMPIC GAMES 2032

Following this recent announcement of the successful bid for Brisbane, Scenic Rim will also get an opportunity to shine on the global stage with Lake Wyaralong being chosen to host both rowing and canoeing events. The South East Queensland Mayors initiated the journey back in 2015. This world event will have numerous advantages not only for our region but for Queensland and Australia with infrastructure upgrades and tourism and social benefits. You can follow the updates on Council's website www.scenicrim.qld.gov.au/homepage/198/2032-olympic-games and see the video clip of Lake Wyaralong that helped clinch the deal.

\$4 MILLION STIMULUS FUNDING

Our region will benefit from this recent funding announcement under the Queensland Governments 2021-2024 South-East Queensland Community Stimulus program. The primary goal of this funding is to stimulate employment by supporting projects that will have lasting value to communities and stimulate economic development. The projects are spread widely through the region.

URBAN UTILITIES IN CANUNGRA

I have been advised that UU officers will be visiting Canungra on Saturday, August 14 and Sunday, August 15 with a "pop up" information stand and community conversation opportunity in D. J. Smith Park. They will also be addressing the Canungra Chamber of Commerce that week in conjunction with SEQ Water officers.

THANK YOU COL AND ANNE

Col Lee, the past president of Canungra RSL Sub-Branch, and his wife Anne very generously donated some beautiful books to Canungra Library entitled Next Door's Dog is a Veteran's Dog. This is a very readable book mainly for children but fun for adults too.

CONTACT ME

I am always available to talk with residents on 5540 5403 or 0407 630 052, or email virginia.w@scenicrim.qld.gov.au. I will be at the Canungra Library next on Saturday August 14 from 9am till 11am for residents to drop in.

Pet of the Week



Iggy Pop - we love you!



Story & photo: Christey Johansson

This week's pet, or four-legged furry human, is our very own Iggy Pop, or 'Iggy Man' as Iris refers to him. Iggy has been my best friend for 13 years, and he is the best dog brother a little girl could wish for!

We spend a lot of time with Iggy every day, as he is an Italian Greyhound (*Piccolo Levriero Italiano*), and this breed requires a lot of companionship. This is a very big consideration to take into account if you wish to own an Italian Greyhound, otherwise it simply isn't fair on them!

They are definitely indoor dogs, but do enjoy the outdoors. Iggy, in his heyday, ran with me on the beach every sunrise, and came camping, canoeing, and boating too.

He enjoys trips in the car most of all, and whether it is to the local shops in Eagle Heights or on a road trip, he is down the stairs quick smart, as soon as you say the 'D' word. Iggy has travelled to Melbourne for work, to far north Queensland's Chillagoe, caving with me when I was three months pregnant, and as far west as Kintore, Northern Territory to stay with Pupunya Tula artists. We have stayed at a luxury resort and swagged it under the stars together, and my feet are always warm when I sleep! Italian Greyhounds are an adaptable breed, so long as they have companionship, and there is a warm, soft place to curl up. Iggy *makes* our family, and will happily go anywhere with us.

Italian Greyhounds are loyal, affectionate, playful and extraordinarily smart canines. Before Iggy went blind last year, I spent so much time enjoying the way he stared deeply into my eyes with pure unconditional love. My heart melted every time! I also love how we hold hands when we drive, and this still makes me laugh after 13 years. Iggy sleeps with us every night, and gets carried to bed like a prince. It is not a dog breed for everyone but for us, Iggy Pop is perfect!

The breed is fastidious about cleaning, and we only rarely bath him. These dogs also don't moult or have an odour. And, before his senior years, Iggy could jump 1.5m high without hesitation onto office desks for pats or on beds for siestas. This breed (and sighthounds generally) sleeps a lot, which I didn't know until after I got him.

One of the first phrases learned in Latin 101 is "*Cave Canem*", or "Beware of the Dog". Some believe that this warning, typically found on mosaics of ancient Roman houses, wasn't to warn of a dangerous dog, but to remind visitors not to step on miniature greyhounds. Egypt is where the breed is believed to have originated around 3,000 BC, and mummified remains have been found in Pharaohs' tombs in the Valley of Kings. It's also said Cleopatra had many Italian Greyhounds, and that they warmed her bed.

Our Iggy Pop now enjoys small walks in the neighbourhood and on Geissmann Oval. Iggy eats *Science Diet* dry food and jerky from The Pet Dude, and pigs' ear treats from Laurie at Eagle Heights Butchery. He also adores tuna, and we pour a small amount of tuna and olive oil daily on his dried food to keep his coat soft and healthy. He loves fruit and veggies which we buy locally from Joseph The Greengrocer and The Nosy Gnome. Strawberries, apples and peas are his favourites. This guy knows how to live, and we love him with all our hearts!

IN STOCK & READY TO GO

Australian Companies - Tested to the Australian Standard using Australian Hardwood

KENT Country Classic MKII
Convection Heater with Fan
Heats up to 300m²

\$1995

Includes
FREE
Standard
Flue Kit
Save up to
\$569

KENT
THE FLAME OF THE FUTURE

KENT Calisto Small Wood Stacker
with Fan • Minimum 10mm Cnr Clearance
Heats up to 200m²

\$2195

Includes
FREE
Standard
Flue Kit
Save up to
\$569

Medium and Large
Calisto deals also

KENT
THE FLAME OF THE FUTURE

KENT Somerset MKII
Convection Heater with Fan
Heats up to 200m²

\$1695

Includes
FREE
Standard
Flue Kit
Save up to
\$569

KENT
THE FLAME OF THE FUTURE

Masport Redcliff
Radiant Heater with Legs
Heats up to 120m²

\$1499

Includes
\$300
of **FREE**
Flues

Masport
Heating

Rockwood also available

Masport Ravenhall
Free Standing - Radiant Wood Stacker
Heats up to 200m²

\$2199

Includes
FREE
Flue Kit
up to
\$569

Masport
Heating

Saxon Mahogany
Convection Heater with Fan / 8mm Steel Firebox
Heats up to 350m²

\$3595

Includes
FREE
Flue Kit
up to
\$569

SAXON

Saxon Rosewood also available

GRAB A HOT DEAL NOW! For prompt installation



QUEENSLAND'S FIREPLACE SPECIALISTS FOR OVER 40 YEARS • TWO GREAT "STAND ALONE" LOCATIONS

GOLD COAST
fireplace&bbq
SUPER CENTRE

5531 6266



84 Bundall Road, Bundall
Open 7 days
Mon to Fri 8:30-5pm,
Sat 8:30-4pm, Sun 10-4pm
sales@gcfire.com.au
www.gcfire.com.au



BRISBANE
fireplace&heating

3368 2011



Douglas Street Design Centre
46 Douglas Street, Milton
Open 6 days
Mon to Fri 9-5pm, Sat 9-3pm
info@bfandh.com.au
www.brisbanefireplaceandheating.com.au

*Conditions apply - Delivery, Installation, Extra Flues or Inspections where required are not included. Sale ends August 7 Brisbane / August 8 Gold Coast. Only whilst stock lasts. **Lopi available in Brisbane Only • ^Regency available in Gold Coast Only