

Scenic

News

Tamborine Mountain, Canungra, Tamborine, Beechmont, Beaudesert, Cedar Creek, Boyland

NEW \$7 MILLION POLICE STATION TAKING SHAPE



Inspecting progress on the new \$7 million state-of-the-art Beaudesert police station last week were Police Minister Mark Ryan (right) and Member for Scenic Rim Jon Krause (centre) with, from left, construction site manager Ashley Gallichan, Sergeant Steve Ordynski, Inspector Tracy Dale, Assistant Commissioner Brian Wilkins, and Senior Sergeant Ken Murray. Mr Ryan said the new facility would deliver first-class infrastructure for police and meet policing needs of the local community well into the future. Mr Krause said he had fought for the new station since 2012 and it was great to see it finally coming together.

*Celebrating 62 years of unbroken publication...
www.scenicnews.com.au*

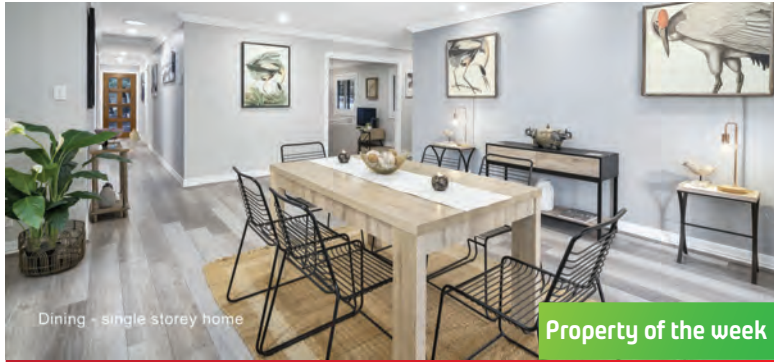
CELEBRATE YOUR FIESTA !! @ EL BURRO CANTINA

Now Open Sunday Nights !!

16 MAIN WESTERN ROAD, NORTH TAMBORINE PH: 5545 4003

OPENING HOURS : TUESDAY TO SUNDAY 5PM - 8PM
SATURDAY & SUNDAY LUNCH 11.30 AM - 2.30 PM
BOOK ONLINE: ELBURROCANTINA.COM.AU





Dining - single storey home

Property of the week

SALE 8 5 4 6001m²

3 Magnificent homes-bring the family home \$1,597,000+
2-8 Roslyn Court, Tamborine Mountain

- Very unique property & an opportunity to bring the extended family home, still private from each other
- Each home has something special about it, all modern, open, with own entrance and entertainment areas

AGENTS: Ton Wolf 0424 591 012
Paul Edwards 0419 249 271
Heleen van Daalen 0424 591 011



Property of the week

SALE 4 2 2 601m²

Enjoy a change of lifestyle \$1,200,000
10 Grebe Street, Burleigh Waters

- The GC has the weather to make the most of your own pool
- Modern open plan home with 2 living areas
- Room to park the jet ski with side access to rear of property
- Undercover outdoor area overlooking your pool

AGENTS:
Monique Clemens 0429 004 840
Erin McGee 0427 078 757



PROPERTY MANAGEMENT

Short and long term rentals

Looking for the BEST management team to manage your investment?

You'll be in great hands all year round!

We would love to help you

Call us...

Mountain 5545 4000/ Tamborine 5543 6444

OPEN HOMES Sat 19th

10-10.30 10 Grebe St, Burleigh Waters
12 - 12.30 2-8 Roslyn Court



Review: Buyer 4 Saguro Crt ★★★★★

Linda was great to work with when buying this property. She was friendly and relaxed to deal with & always ready to listen & help with any queries, making the whole process positive & enjoyable. She knows the area very well & was a pleasure to interact with. I would recommend Linda to anyone wanting to sell their property.

AGENTS: Linda Hogan
0414 300 558



SALE 6576m²

82-88 The Shelf Road, Tamborine Mtn

- With views like this it will make your build design a very exciting one
- Power already to block, post & rail fencing
- Wide frontage for spectacular street appeal

\$1,000,000+

AGENTS: Ton 0424 591 012
Paul Edwards 0419 249 271
Heleen 0424 591 011



SALE 2 1 8 2.76 acres

16-18 Macdonnell Road, Tamborine Mtn

- Here is your opportunity to work from home
- Create shop or cafe/business & live onsite or utilise shop and rent out the flat
- Located in the tourist hub of Gallery Walk
- So many features! Call Barry for info

\$1,590,000+

AGENTS:
Barry Chick
0418 876 191



SALE 1000m²

14-16 Carey Parade, Tamborine Mountain

- Tuck your sweet Mountain cottage onto this lovely block of land, quiet area with rainforest reserve to the rear
- Gentle slope ready to build!

\$400,000

AGENTS:
Barry Chick
0418 876 191



ARE YOU A FENCE SITTER?

There is so much scientific information that has been drowned out by sensationalist reporting around the COVID-19 vaccine.

The result is that people are confused and frightened, making decisions based on fear not fact. The following information is to help you with this decision.



REASONS TO HAVE AN EARLY COVID-19 VACCINE:

- Winter encourages the faster spread of the virus.
- If you are over 50, It takes more than three months to complete a vaccination course and reach maximal immunity. Waiting until the virus is spreading in the local community may be too late.
- Hotel quarantine is leaky.
- The community is becoming complacent about testing and social distancing.
- Increasing numbers of travellers are returning to Australia with COVID-19.
- Having the COVID-19 vaccine for the over 50s now does not preclude having another type of vaccine as a booster later in the year or next year.

- The Indian variant spreading in Victoria is more infectious than the previous variants that have reached Australia.
- The virus is never going away, and it is inevitable that in the next one to two years it will spread through the Australian community.
- The Australian Government is currently making plans to gradually open the international borders from the end of the year.
- COVID-19 death rate varies from 1.3 per 100 for 50 to 59-year-olds, increasing to 15 to 30 per 100 for over 80s.
- For every death from COVID-19 there are five times the number of people who develop permanent health problems and disability e.g., chronic lung disease, heart failure, kidney failure, chronic fatigue, or dementia.

RISKS AND SIDE EFFECTS OF THE VACCINE:

Some 30 to 40 per cent of people, in the 24 hours following the vaccine, will get one or more of the following non-serious side effects: sore arm, headache, mild fever, sweats, shakes, muscle aches or nausea. These are not dangerous and resolve in one to two days and are produced by

your immune system responding to the vaccine. These effects are more common in younger people.

There is a rare potential side effect, called thrombotic thrombocytopenic syndrome (TTS), an autoimmune clotting disorder which occurs in about one in 100,000 vaccines. It is less common in older age groups than younger. Having had a previous blood clot or family history of a clot does not increase your risk of TTS. To put this in context, your risk of death in a car accident in the next year is about one in 20,000.

Australian doctors have learnt quickly how to recognise and treat this condition such that now all but two patients who have had TTS have been successfully treated, making one death in over 2.5 million doses of the vaccine.

If you would like to speak to your doctor more about this or book for a vaccine, please call us on 5545 1222.

Dr Leeann Carr-Brown
Tamborine Mountain
Medical Practice

ADVERTISEMENT

Jon KRAUSE MP
Member for **Scenic Rim**
Fighting for our fair share

☎ 07 5515 1100 f JonKrauseMP

Authorised by J Krause, 91 Brisbane Street, Beaudesert QLD 4285.



Canungra Dental



Implants
The perfect
solution for teeth
replacement.

Book today for our **FREE** Dental Implant
Consultations with Dr Dallin Leneham
(07) 5543 5299

WE OFFER:

- Weekly community newspaper
- 7100 distributed - to home letterboxes, and to local businesses
- Get your ad in front of more than 20,000 readers each week
- Free online exposure, and online advertising opportunities
- Modern website - great visibility for you
- Social media coverage included with your advertising
[#scenicnews](#) + [facebook.com/scenicnews](#)
- Tall A4 size - standout exposure
- High quality gloss print
- 62 years of unbroken publication!
- We cover Tamborine Mountain, Canungra, Tamborine, Cedar Creek & surrounds - bulk drops in Beaudesert

Looking to advertise - reach a bigger audience - have a story to tell?

Call today

0417 238 238 or

advertising@scenicnews.com.au

www.scenicnews.com.au/rates

Production: Andrew Nagy

0432 827 537

info@scenicnews.com.au

editor@scenicnews.com.au

**Advertising?
0417 238 238**

Call or email

advertising@scenicnews.com.au

COUNCIL REFINANCES AT A LOWER INTEREST RATE

Scenic Rim Regional Council has adopted an amended 2020-2021 Budget in response to changes to forecast revenue and expenditure.

Mayor Greg Christensen said the amended budget highlighted key initiatives that would provide significant financial benefits and allow Council to fund more capital projects.

"As part of the Queensland Government's Local Government Debt Refinancing Program, Council has been able to refinance \$31 million of existing fixed loans that were held with Queensland Treasury Corporation to take advantage of historically low interest rates," he said.

"This initiative was put in place by the Queensland Government to help stimulate the economy in response to COVID-19 impacts.

"Some of Council's historic loans had interest rates of up to seven per cent, so being able to refinance our debt at a lower rate, that is fixed for the life of the loan, means we are able to use the savings in current debt service payments to leverage an additional \$15 million in borrowings that can be allocated to fund eligible capital projects.

"This is a great opportunity for the region, and like most people with household mortgages, we've ensured we can lock in the lowest interest rates and free up additional cash for other benefits.

"Council will now assess how best to apply these additional borrowings to eligible capital projects that will bring strong long-term benefits to the region.

"It's important that every dollar we invest in capital generates socio-economic benefits for the Scenic Rim."

Cr Christensen said the ability for Council to borrow more debt was also testament to strong governance and financial sustainability.

"As indicated in the recent Auditor-General's Local Government Report, we are on par or ahead of other rural and regional councils for our financial performance, and this is something we are proud of," he said.

ROTARY SAYS THANKS FOR HELP



Following the success of the inaugural Tamborine Mountain Rotary Car Show on May 2 at the Long Road sports complex, the Rotary Satellite Club of Coomera River-Tamborine Mountain has been able to make donations to the local SES and Tamborine Mountain Sports Association in appreciation of their help in ensuring the event went ahead so smoothly, despite a day of threatening weather. Rotary chair, David Power, presented SES Tamborine Mountain Group leader, Peter Franklin, with a cheque for \$750; and Tamborine Mountain Sports Association president, Mick Angus, with a cheque for \$2500.

Rotary spokesperson, Dr Jan Zomerdiik, said organising the event had been a formidable challenge and without the involvement of the SES and Sports Association it would not have been the success it was.

He said planning had already begun on next year's event which was expected to be held in the first week of May.

Manufactured in Brisbane by Mr Stoves
FACTORY DIRECT at WHOLESALE PRICES



Proudly installing on Tamborine Mountain
and surrounds for 30 years



ONLY \$1695

Includes
3.6m Flue Kit
worth
\$440



**Vogue
Sierra**

VOGUE HEATING

We can quote, supply and install
all of our products

3375 1464

8 Machinery St, Darra
www.mrstoves.com.au

ALSO OPEN SATURDAY

Open Mon to Fri 8am - 5pm

Sat 8am - Noon

FAMILY OWNED AND OPERATED

07 5545 2522



Here is something to smile about:
Mention this ad, and your check-up,
clean and x-rays procedure
is only \$200 (limited time only).

Tamborine Mountain Shopping Square
17-27 Main Western Road, North Tamborine
ehdcreception@eagleheightsdental.com.au
www.eagleheightsdental.com.au

Proposed Development

Make a submission from
18 June 2021 to 9 July 2021

Reconfiguring of a Lot (2 into 3 lots)

Where: 16-42 Coburg Road, Canungra Qld 4275

On: Lot 5 on RP234475 and Lot 6 on RP234475

Approval sought: Development Permit for Reconfiguring a Lot

Application ref: RAL21/008

You may obtain a copy of the application and make a submission to:

Scenic Rim Regional Council

PO Box 25, Beaudesert Qld 4285

mail@scenicrim.qld.gov.au

(07) 5540 5111

www.scenicrim.qld.gov.au

Written submissions may be made electronically; and electronic submissions are to be sent to

mail@scenicrim.qld.gov.au, and all submissions, including individual submitter's particulars, will be published on Council's website (PD Online) and therefore will be accessible to internet search engines.

Public notification requirements are in accordance with the
Planning Act 2016



Council Notices



COMMUNITY CONSULTATION

ADVENTURE AND NATURE-BASED TOURISM STRATEGY

Council is seeking feedback on its draft Scenic Rim Adventure and Nature-Based Tourism Strategy, which establishes a framework for Council and industry to collaborate with the aim to become Queensland's leading adventure and nature-based tourism destination.

Visit Council's website to read the draft strategy and to provide your feedback by 5pm, Friday 18 June.

www.scenicrim.qld.gov.au/have-your-say

LIBRARIES

Visit scenicrim.qld.gov.au/libraries

HARRY POTTER BOOK NIGHT

Dress up and join us for another Harry Potter Book Night filled with magical games and spellbinding activities for witches, wizards and Muggles.



BEAUDESERT AND TAMBORINE MOUNTAIN LIBRARIES
Thursday 24 June | Bookings essential

STORYTIME IN THE PARK OUTREACH

PEAK CROSSING	21 June
TAMBORINE VILLAGE	22 June
BEECHMONT	23 June
RATHDOWNEY	14 July
KALBAR	15 July

STORYTIME SESSIONS

Bookings are essential. Space and number limits apply.

BEAUDESERT Monday 9.30am | Wednesday 9.30am

BOONAH Monday 10am | Friday 10am

TAMBORINE MOUNTAIN

Monday 9.15am | Storytime for children 2-5 yrs

Friday 9.15am | Baby Rhyme Time 0-2 yrs

BEAUDESERT LIBRARY

Everyone is welcome at the **Yak & Yarn** group for knitting, crochet, crafting and conversation every Tuesday 9:30am - 11:30am.

BOONAH LIBRARY

Eat Local 'Mini Market Day'
30 June | 10am - 2pm

Speak directly to the local producers and sample their goods from the beautiful Scenic Rim region

LIVE + ONLINE AT THE CENTRES

For more information or bookings phone 5540 5050 or liveatthecentre.com.au

LIVE ON STAGE

BLOOM Sings Stevie Nicks, Carole King and Linda Ronstadt Songbook

Friday 25 June | The Centre Beaudesert

Tickets Adults \$29-\$34

ON EXHIBITION



1 June - 14 July | The Centre Beaudesert

Features works by two Indigenous women artists, Kim Broлга Williams and Kim Walmsley.

Through paintings, weaving and installations, Kim Broлга Williams' Stolen provides an insight into Australia's history of Stolen Generations. Kim Walmsley's Water Dreaming is the final stage of the Corroborate public art project by Scenic Rim community members.

FRIDAY FLICKS

Boonah Cultural Centre | 10am | 1pm | 7pm

Tickets \$10 or Conc \$7.50 Pre-purchased essential

18 June Wild Mountain Thyme (PG)

KIDS' FLICKS

Boonah Cultural Centre | The Centre Beaudesert
Tickets \$5. Children U13 must be accompanied by an adult

TUESDAY 29 JUNE

10am The Croods 2: A New Age (G)

1pm Pan (PG)

WEDNESDAY 30 JUNE

10am Scooby Doo: The Sword and The Scoob (G)

1pm Missing Link (G)

THURSDAY 1 JULY

10am My Spy (PG)

1pm The Croods 2: A New Age (G)

FRIDAY 2 JULY

10am Pan (PG)

1pm Scooby Doo: The Sword and The Scoob (G)



IN STOCK & READY TO GO

Australian Company - Tested to the Australian Standard using Australian Hardwood

KENT Country Classic MKII
Convection Heater with Fan
Heats up to 300m²

\$1995

Includes Free Standard Flue Kit
Save up to **\$569**

KENT
THE FLAME OF THE FUTURE



KENT Fairlight
Inbuilt - includes dual fans and remote#
Heats up to 280m²

\$4295

Up to **\$569** Of Free Flues included

KENT
THE FLAME OF THE FUTURE



KENT Somerset MKII
Convection Heater with Fan
Heats up to 200m²

\$1695

Includes Free Standard Flue Kit
Save up to **\$569**

KENT
THE FLAME OF THE FUTURE



KENT Calisto Small Wood Stacker
with Fan • Minimum 10mm Cnr Clearance
Heats up to 200m²

\$2195

Includes Free Standard Flue Kit
Save up to **\$569**

Medium and large Calisto deals also

KENT
THE FLAME OF THE FUTURE



KENT Fairlight
Free Standing - Includes base and remote
Heats up to 350m²

\$4295

Includes Free Standard Flue Kit
Save up to **\$569**

KENT
THE FLAME OF THE FUTURE



MAXIHEAT PRIME 150 SCOOP PURCHASE - Heater Only
Heats up to 150m²

\$795

maxiheat



GRAB A HOT DEAL NOW! For prompt installation



QUEENSLAND'S FIREPLACE SPECIALISTS FOR OVER 40 YEARS • TWO GREAT "STAND ALONE" LOCATIONS

GOLD COAST
fireplace&bbq
SUPER CENTRE

5531 6266




BRISBANE
fireplace&heating

3368 2011



84 Bundall Road, Bundall
Open 7 days
Mon to Fri 8:30-5pm,
Sat 8:30-4pm, Sun 10-4pm
sales@gcfire.com.au
www.gcfire.com.au



Douglas Street Design Centre
46 Douglas Street, Milton
Open 6 days
Mon to Fri 9-5pm, Sat 9-3pm
info@bfandh.com.au
www.brisbanefireplaceandheating.com.au



*Conditions apply - Delivery, Installation, Extra Flues or inspections where required are not included. Only while stocks last - Sale ends 30 June.
**Lopi available in Brisbane Only • ^Regency available in Gold Coast Only • # zero clearance box available - additional cost.

TAMBORINE MOUNTAIN BRIDGE CLUB RESULTS

- Mon 7th June N/S Robert McCathie & Eddie Heinemyer
E/W Heike Edrich & David Donaldson
- Wed 9th June N/S Kevin Hamilton-Reen & Mary Simon
E/W Eddie Heinemyer & Robert McCathie
- Thu 10th June N/S Sheena Pollock & Denise Merri
E/W Marna Mallet & Margaret Maidens



The only purely 100%
Australian Funeral Company
and Crematorium

Winner Old Seniors
Excellence Award

Enquiries
Welcome **5593 4777**

Rotary

Rotary Satellite Club
of Coomera River
Tamborine Mountain



OUR ACTIVITIES

- Public transport for our community
- Birthing kits for Pacific Islands
- Youth training programs
- car show 1st Sunday May 2022

- Are you interested
- Want to start a new adventure
- Meet new people?
- Wednesday 7-8 pm
Eagle Heights Resort Motel

Contact: David Power
ph 0419 743 275

**Wednesday
23rd June:
Speaker**

**Howards Edmunds on
90-ies Avocado and
Rhubarb Festival**



SCENIC RIM MUSIC SCHOOL

*invites you to experience our
brilliant concept in music tuition:*

PIANO STRINGS VOICE
on Tamborine Mountain

to register your interest:

07 5545 4700 or 0422 788 399

Ask us about our local 'do-re-we'
classes for Pre-schoolers.
www.scenic-rim-youth-choir.org



Ian MacAllan
LAWYER

5545 4303

- Wills
- Probate
- Estates
- Enduring Power of Attorney
- Advanced Health Directives



40 Southport Ave Eagle Heights 4272

SUNCORP



Retail Agency

North Tamborine Shopping Centre
15 Main St, Tamborine Mountain QLD 4272
9am - 4pm Monday to Thursday
9am - 4.30pm Friday
(07) 5545 4814

ACS Engineers

CIVIL | ENVIRONMENTAL | PROJECT MANAGEMENT

07 5541 3500

*Providing Professional Engineering &
Civil Design Services to the Scenic Rim*

admin@acsengineers.com.au



www.acsengineers.com.au

MORE LAUGHTER SET FOR MID WINTER

Zamia theatre regulars will be familiar with the works of English comedy playwright David Tristram. Over the last 20 years Tamborine Mountain Little Theatre has performed 10 of his works, ranging from the riotously incompetent Inspector Drake series, to a revisit of *Cinderella* in pantomime format, to a bizarre collection of fantasies of an ageing suburban couple.

The Zamia's resident theatre group loves performing his comedies almost as much as the audience loves watching them. Tristram plays are clever, usually quite ridiculous and screamingly funny while addressing such modern

themes as sex, ageing, alcohol, crime, or in the case of the productions currently in rehearsal, the theatre itself.

Headlining the coming Tristram comedy double is the fifth play in the Little Grimley series. Tristram revisits the antics of this quaintly endearing theatre group as it tackles the trials of putting on a play during Covid lockdown, in *Lockdown in Little Grimley*. Opposite this is Tristram's witty skewering of theatre competitions with *Late Entry*. The opening performance is Friday 25 June.

Both one act plays are directed by Brian Franklin, with a cast of seasoned veterans who love performing in these types of plays. Come along and join the fun. Who said lockdown could not be a laughing matter?

Bookings online <https://www.trybooking.com/BRPYG>

Kim Burgess



Tamborine Mountain Little Theatre members during rehearsal for their next theatrical production, *Lockdown in Little Grimley*, from left: Robert Wilson, Owen Buckley and Mary Comiske, with Cath Buckley in beekeeper attire.



Scenic Rim Optometrists
Beaudesert Medical Centre
47 William St, Beaudesert QLD
Phone: 5541 9510
scenicrimoptometrists.com



DANIEL TUNE



KATIE HENDERSON



MARK SMITH

FOR MORE DETAILS SEE:
eyecareplus.com.au/seeaus
ENDS 13 SEPT 2021
T&CS APPLY.



EyecarePlus[®]
OPTOMETRISTS



JON KRAUSE MP

State Member for Scenic Rim

MAINTAINING COVID-19 VIGILANCE

As we continue to navigate COVID-19 issues in Australia, it is important to remain vigilant to protect ourselves, our families, and those most vulnerable in our communities. Social distancing, where possible, is an important and sensible practice that we can all adhere to when out and about – 1.5 metres is the recommended distance.

This measure, along with increased efforts to prevent transmission of ‘bugs’ through our hands, is credited with a steep drop in flu, colds and other similar winter ‘bugs’ both last year and this year as well. Another measure that is in place to help manage any potential spread of the virus is contact tracing by Queensland Health – and the keeping of records of when people are in different places is very important for this.

While you may never be a spreader of COVID-19 in the first instance, it could very well be that you visit a premise where somebody who is found to have the virus also visited. In this case, ‘checking in’ on the Queensland Government app with your phone, or by other means, will be beneficial to you and those close to you in order to track (or possibly stop) further exposure. I see most people jumping on board and taking part in these preventative measures, which is great – thank you. For more information on the steps recommended to stay healthy, visit australia.gov.au

QUEENSLAND STATE BUDGET

In Parliament this week the Queensland Labor Government delivers the 2021-2022 State Budget, and I will be watching closely to see if it commits its fair share of funding for vital infrastructure in our region.

The big issue that we need funding for in Scenic Rim is roads and the delays to works all over the electorate are a result of Labor’s \$5.85 billion road backlog – more than three times the cost of the Toowoomba Second Range Crossing – which has increased by \$400 million in just one year. Remember, this \$5.85 billion backlog is just maintenance – it doesn’t even touch on new projects, or upgrades.

My constant fighting for Scenic Rim roads has seen work brought forward on some projects and I’ll keep fighting for our fair share, getting in the Government’s ear, to fund improvements to many parts of our road network to make them safer and more efficient. I’ll be sure to update you next time with all the information about the State Budget for 2021-2022.

EVERGREEN WINTER FESTIVAL

From 18 to 20 June the inaugural Evergreen Winter Festival will be running on Tamborine Mountain at 6-8 Knoll Road. It’s a great opportunity to get out and about in Scenic Rim and I encourage you to get along if you can make it.

MY OFFICE

In addition to helping with Queensland Government matters, my office can provide assistance in procuring Queensland flags and letters of congratulations for significant birthdays and anniversaries. As well as this, we can provide letters of support for community groups seeking grant funding. Anybody considering becoming a Justice of the Peace/Commissioner for Declarations will need to contact my office to complete the nomination form.

If you have an issue that you think should be fixed, I encourage you to contact my office, toll-free on 1800 813 960, so I can lobby on your behalf in Brisbane.



SCOTT BUCHHOLZ

Federal Member for Wright

FIXING LOCAL ROADS

Funding under the Australian Government’s Black Spot Program will substantially improve 67 dangerous crash sites on Queensland roads in 2021-22.

Locally, we will see a number of roads benefit from this funding which is a part of our major investments to build safer roads right across the nation. Under this round, Beechmont Road will receive a significant boost at two sections, at Beechmont and Witheren.

The Government is providing \$209,000 to remove vegetation and install guideposts with reflectors, curve alignment markers and a new seal. At Witheren, \$181,000 will see an upgrade of a poor surface of road, install audio-tactile line-marking on edge and centreline and guideposts with reflectors. There are many more projects across the region.

LEADING OTHER ADVANCED ECONOMIES

The latest National Accounts show the Morrison Government’s economic recovery plan is working with our economy growing by 1.8 per cent in the March quarter. Australia is now the first advanced economy to exceed its pre-pandemic level (growing by 0.8 per cent). By contrast, the US economy contracted by 0.9 per cent, Germany by 5 per cent and the UK by 8.7 per cent.

In April, there were 46,000 more Australians in work than there were before the pandemic hit in March 2020. In just over a year, Australia’s economy has recovered what it lost, faster than any recovery from any major downturn in recent history and nine months earlier than previously expected.

BEATING EMISSION REDUCTION TARGETS

The December 2020 Quarterly Update of National Greenhouse Gas Inventory shows Australia’s emissions fell 5 per cent, down 26.1 million tonnes compared to 2019. Emissions are now 20.1 per cent below 2005 levels, the baseline year for our 2030 Paris Agreement.

Australia’s world leading deployment of solar and wind continued to drive down emissions from electricity generation, down 4.9 per cent for the year. In 2020 Australia deployed new wind and solar photovoltaics at eight and a half times the global per capita average, with investment in renewables totalling more than \$35 billion since 2017.

The Morrison Government is investing more than \$20 billion over the decade to 2030 to meet Australia’s emissions reduction targets and position Australia as a global leader in low emissions technologies.



Working for Wright

- 21 William Street, Beaudesert QLD 4285
- 07 5541 0150
- scott.buchholz.mp@aph.gov.au
- scottbuchholz.com.au
- [SBuchholzMP](https://www.facebook.com/SBuchholzMP)



Letters to the Editor

Readers are reminded that letters to the editor must show full name of writer for publication.

LEGISLATION IS CLEAR, SO IS CORRECT GOVERNANCE

Roland Lindenmayer in his recent letter to the editor demonstrates an inability or unwillingness to accept that elected councillors must serve the overall public interest of the whole of the local government area. This a very clear legislated requirement of the Queensland Local Government Act.

Roland, no matter how unpalatable it may be to you, elected councillors must place the welfare of the total local government area above any perceived interests of any one division. Cr Swanborough is acting contrary to his oath of office and contrary to his legislated responsibilities in pursuing his exit agenda.

Derek Swanborough had no right to stand for council with an intent to pursue an exit agenda. He should have done this as a private citizen not as an elected officer. Yes, he clearly outlined his intentions from the outset but once elected he was no longer entitled to pursue such an agenda; that is the very reason he should not have put himself forward in the first instance. Yes, he is doing exactly what he said he would do but he should not be commended for doing so; he is trying to destroy from within.

I congratulate Cr McConnell in his letter of May 27. It took courage for him to write that letter and you could sense that he did so as a last resort and after an internal struggle. He wrote what needed to be said and it was overdue.

Like many other ratepayers I am also concerned about our dysfunctional council that appears to be poorly led. It is the obligation of individual councillors working as a team to address the many concerns that have emerged over an extended period of time. Cr Swanborough's exit ballot and associated campaign makes such a corrective, team approach most unlikely.

I disagree with the exit proposal but have not voted as I cannot bring myself to participate in a process borne out of such a poor governance. Participation would demonstrate endorsement of Cr Swanborough's right to even ask the question as a sitting councillor.

Ian Langdon

ARE RATES FOR MANY OTHERS TOO LOW?

In his Letter to the Editor of the *Scenic News* of 3 June, Glenn Antill states that,

'The arguments for staying in the Scenic Rim just don't make sense and seem driven by ignorance and a deep dislike of our councillor who is trying to change what clearly needs changing.' However, Glenn makes little attempt to justify such an attempted put-down and Derek Swanborough has been a valued friend for many years. I just happen to disagree with him in the present case.

Then, when Glenn further states that, 'I haven't heard any sensible responses to the arguments of why we should change councils, only hysterics and some crazy ideas that somehow the Gold Coast spending of money here would be a bad thing,' he has gone a bit too far. In particular, I would appreciate his response to my published analysis of the effectiveness of our representations if we transferred to the Gold Coast. Due to the numbers, we would not have any effective presence whatsoever. Almost certainly, even our councillor would be from down below. The Gold Coast would spend money here, but we would have virtually no influence on what and with what aim. The Gold Coast's priorities for Tamborine Mountain could be quite different to those of the Mountain's residents and there would be nothing we could do about it.

The dictatorial approach of our present Council is simply unacceptable. It lacks both transparency and meaningful community consultation and seems subservient to the Mayor's vision whatever that is. Remaining in the Scenic Rim we would have some chance of fixing that but in Gold Coast we would be powerless against Big Brother.

Another very interesting factor has just appeared. Queensland's Auditor-General has issued a report reviewing the financial sustainability of all local governments in the State. Disturbingly, it found that the majority were in a poor state, spending more than they had earned and making inadequate provision for asset replacement as it became necessary. Sustainability is at risk. However, the Scenic Rim apparently came well up in the list of the good performers. It seems that, rather than the Scenic Rim's rates being unreasonably high, it is possible that, for many others, the rates are too low with significant rise inevitable.

Phil Giffard


Relationship Sanctuary
ON TAMBORINE

**COUNSELLING FOR INDIVIDUALS,
COUPLES & FAMILIES**



0401 517 243

Appointments in person or via video call.
Reasonable Rates.

linda@relationshipsanctuary.com.au


OPTOMETRISTS

Optometrist

Call us now for a consultation
5545 0277
17-27 Main Western Rd, North Tamborine

 **BEAUMONT CARE**
Warm-Hearted Care, Your Way

Residential Aged Care,
Respite and Home Care Services
enquiries: 0499 779 877

NDIS enquiries: 0407 978 250

Career opportunities: 0448 800 953
jobs@beaumontcare.com.au



Clontarf • Kippa-Ring • Redcliffe • Rothwell • Wamuran • Mt Tamborine

MICHAEL DWYER Solicitor
A Name You Can Trust

For over 25 years, Michael Dwyer Solicitor, a Tamborine Mountain local, has served businesses and families in the Gold Coast area. Our firm also has the capacity to work interstate & internationally.

**Family Law, Conveyancing,
Commerical Law, Criminal Law,
Trusts, Wills and Estates**

Call Today! FREE First Consultation Offer

OFFICE HOURS
(07) 5526 4572 • info@mdsollicitor.com.au

URGENT AFTER HOURS CONTACT
0419 026 920 • michael@mdsollicitor.com.au



TAMBORINE MOUNTAIN MEDICAL PRACTICE

14 Main Western Road
North Tamborine
and
Shop 1/17 Southport Avenue
Eagle Heights

Phone: 07 5545 1222

www.tamborinemountainmedical.com.au
online booking service available on this website

50 years of continuous service to the
Tamborine Mountain community

Affiliated with three universities

COMPREHENSIVE HEALTH CARE SERVICE

Opening Hours:

Mon – Thurs 8.30 am – 6:15 pm
Fri 8.30 am – 5 pm
Sat 8.30 am – 12 noon
Sun 8.30 am – 10.30 am

Dr Ann Bennett
Dr Leeann Carr-Brown
Dr Jan Zomerdijk
Dr Sanne Kreijkamp-Kaspers
Dr Henri Coombs
Dr Joe Gambin
Dr Cobie Powell
Dr Hok-Yee Siu
Dr Marije Dalebout
Dr Jardin Taha
Dr Nisha Nangrani
Dr Lauren Ries

Accredited by



MEET LOCAL AUTHORS IN CANUNGRA

Meet Your Local Authors Day in Canungra on 20 June will give local residents a chance to meet the talented people behind the books.

The Scenic Rim and surrounding areas are home to many experienced and new writers of both adult and children's books.

Canungra Books and Art makes a special effort to stock books by local authors and is hosting the event to help showcase their writing and ensure their books are promoted.

The day will afford a unique opportunity to go along and say hello, listen to authors share their stories, have an opportunity to buy their books and have them signed by the authors.

Authors attending include:

- Ben Allmon with his wonderful new book *Black and White Braid* about walking the Scenic Rim
- Gillian Wells with her range of adult fiction and new children's book

- Anthony Johnson, author of *Breaking the Mask*
- Marisa Parker, award winning author of historical non-fiction books about the journey of her parents
- Peter Kuttner, author of *One Small Place on Earth*
- Rose Siva, author of the *Dinosaurs* series of children's books
- Robin Adolphs, author of a great range of children's books, and
- Karen Tyrrell, author of the popular *Song Bird* children's book series.

The event will take place at the front and in the carpark of Canungra Books and Art, 6 Kidston Street, Canungra from 10.30am to 2pm on Sunday 20 June.

It will feature book stalls with individual authors, presentation tent for authors to tell their stories, and children's book-reading corner.

Information at Canungra Books and Art Facebook page or 0418 792 161

WHAT DOES A DOLLAR'S WORTH OF POWER BUY YOU IN WINTER?

The cooler weather we're experiencing keeps many of us indoors a lot more and we generally use our powered appliances to keep warm and entertain us, but what do they cost to run?

Energex Executive General Manager Customer, Michael Dart, says the most recent nationally compiled data explains what \$1 worth of power does buy you when running appliances at home.

"Using a reverse cycle air conditioner is still one of the most cost-effective ways to keep your home warm, costing around a dollar to run the average sized system at 20 degrees Celsius in a 36 square metre area for two hours," he said.

"People often love a longer, hot shower in winter but for every 15 minutes it's costing \$1 – not to mention the additional water in dry areas.

And just as you would on fine days in summer, continue using the Hills Hoist and sun for drying clothes where possible because using the dryer can cost up to a dollar per load."

So, what does it cost to keep entertained indoors over winter? Mr Dart said, "A dollar would buy you around 20 hours of binge watching your favourite series on a smart TV.

"Charging your smart phone is extremely cheap, costing just a dollar for a whole year.

"It's hard to resist comfort food in the cooler months and using your oven to cook a hearty meal will cost a dollar while your fridge costs about the same to run for two to three days, depending on its size."

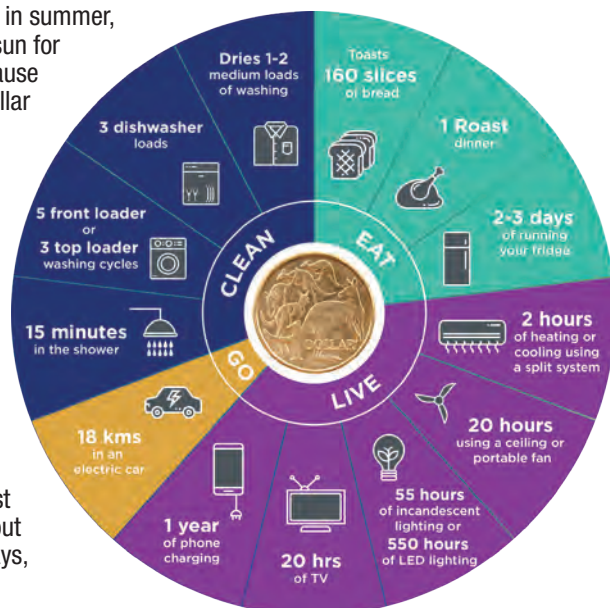
Unfortunately for most of us, staying indoors is not just about kicking back on the couch. Mr Dart said chores would always get in the way of fun, so apart from inconvenience, what does it cost to run the white goods?

"When doing the washing, a dollar will clean around five loads in a front-loading machine compared to three cycles in a top-loader," he said.

"Washing the dishes costs around the same as your front loader, getting around three rounds of plates and cutlery done for a dollar."

"If going for a drive is your thing in the cool weather and you have an electric car then you're doing it pretty economically, motoring around 18km for just one dollar."

The Energy Networks Australia fact sheet on what \$1 of power gets you can be downloaded at <https://bit.ly/34N7wGx>



INAUGURAL CAMELLIA AND MAGNOLIA FEST

Tamborine Mountain Garden Club will hold its inaugural Camellia and Magnolia Festival of Open Gardens next month.

The new festival has been organised to showcase these beautiful plants which grow so well in the elevated volcanic soils of Tamborine Mountain. Because camellias and magnolias bloom during the cooler months, visitors to the popular Springtime on the Mountain festivals miss them, so this will be their chance to see them blossom.

The inaugural festival will be held on Friday the 30th and Saturday the 31st of July.

The traditional Springtime on the Mountain Festival which has been held in various forms for many years will take place this year on Friday the 24th and Saturday the 25th of September.

Five private Mountain gardens, as well as the Botanic Gardens, will be open to visitors. The early sasanqua camellias have already put on an exceptional display throughout autumn this year, and the later flowering japonica and reticulata camellias peak in winter. The magnolias too will be bursting forth.

The festival will be held under COVID-safe guidelines and is being organised to avoid large crowds in any one location at any one time. For this reason, tickets must be purchased online. This will allow visitors to start their tour of the open gardens at any one of the five private gardens, or the Botanic Gardens, without having to congregate in one location first to purchase tickets. An adult ticket is \$20. This allows entry to all gardens, including multiple visits, for one person. Children are free.

Plants will be on sale at some of the private gardens, and visitors are being invited to support the retail, accommodation and hospitality outlets on the Mountain after a tough economic year. In addition, a sausage sizzle and plant sales at the Botanic Gardens will raise funds for the work of the volunteers there.

Garden owners are working very hard to have their properties in peak condition for the end of July and are hoping the season will be kind. Volunteers at the Botanic Gardens are also working harder than ever.

Tamborine Mountain Garden Club members are focussing



heavily on their core business. This is to share gardening information and experiences, and to share their gardens with others. They strive for beauty in their gardens, health and contentment through the process of gardening, and fellowship among members.

It is in this spirit, that Tamborine Mountain Garden Club will present the Tamborine Mountain Camellia and Magnolia Festival 2021; they hope many visitors will come to share the weekend.

Visit www.tamborinemountainbotanicgardens.org.au for further information or to buy tickets through Eventbrite.

*Proudly maintaining the smiles
of the Tamborine Mountain Community
for over 25 years!*



FAMILY & COSMETIC DENTISTRY

- We offer a comprehensive dental service covering all areas of dentistry.
- Preferred providers for BUPA, Medibank Private, CBHS & HCF.

PHONE: 5545 2788

MOBILE: 0455 452 738

info@tamborinemountaindental.com.au

www.tamborinemountaindental.com.au

OUR TEAM:

Dr SANDEEP GUPTA B.D.Sc



TAMBORINE MOUNTAIN DENTAL

EAGLE HEIGHTS SHOPPING VILLAGE (above FOODWORKS) 14/17 SOUTHPORT AVE, EAGLE HEIGHTS

PLEBISCITE CLOSED FRIDAY 12th June 12.00 Noon EXTENSION OF TIME FOR VOTING FOR MISSED DELIVERIES

This is to advise the Household Plebiscite Survey voting closed last Friday 11th, however for all those households who didn't receive a postal Ballot, voting opportunities by Statutory Declarations (forms provided) will be available this Saturday 19th June at Gabby's, (formerly Tastebuddies) next to St Bernard Primary School, from 8.00 am to 5.00 pm and at the Post Office Verandah on the following Sunday 27th June, from 12 noon to 5.00 pm, when voting concludes. Only physical voting will occur to a sealed ballot box.

A JUSTICE OF THE PEACE WILL BE IN ATTENDANCE TO WITNESS ALL STATUTORY DECLARATIONS MADE UNDER THE OATHS ACT, BEFORE VOTING.

All statutory declarations will be balanced to the votes issued and will also be forwarded to Australia Post to form part of their investigations as to why so many households, (mostly in the south-end) did not receive a ballot in their letterbox.

Consequently, it is not expected that results of the Survey will be available until the whole process is concluded, a report prepared, and Australia Post advise of the outcome of their enquiry.

Voting is not compulsory; however, it is my intention that every household be given the opportunity of participating in this process.

Derek Swanborough



EXCLUSIVE SALE P R O P E R T I E S

" KONRAD GETS BEST RESULTS " DON'T TAKE MY WORD FOR IT...!!!

HERE'S WHAT MY CLIENTS SAY

Konrad's guidance and very practical assistance were above & beyond our expectations.

Many thanks Konrad for being our agent, we will recommend you without doubt.

Paul and Joy

30+ YEARS LOCAL RESIDENT



Konrad's professional and diligent approach to real estate is exemplary.

We're extremely grateful for his excellent work and are more than happy to strongly recommend Konrad.

Lewis and Liz.

30+ YEARS SALES EXPERIENCE

CALL NOW TO SEE THIS ON YOUR PROPERTY

KONRAD GALLAHER
0435 99 66 44



konrad@exclusivesale.com.au
exclusivesale.com.au

The story of Star 8...



Star 8 began in Melbourne and branched overseas. It is a leader in the development of green technology solutions, especially in electric and solar electric land, sea and air transport. The Star 8 Australia managing director is Ian Lancaster. Ian is from Mount Tamborine and is one of the founders of the global Star 8 Group.

Star 8 is building a green technology hub in the Philippines called Star 8 City. The Philippine Government has provided Star 8 over 1000 hectares to develop a site for green technology innovation and manufacture.

In 2020, Star 8 Philippines started Star 8 Kibbutz, an environmental advocacy which aims to cultivate a new way of life, a healthy environment, and a sustainable future by working with local tribal groups to develop unmanaged land and thus preserve their natural resources and create

green jobs.

In Australia, Star 8 is focusing on its leading range of solar lighting that is ideal for many situations. From security solar lights to home and garden to commercial lighting, there are high quality solar lights for nearly every requirement. No cabling means cheap and easy installation. Reliable lighting, perfect for blackouts.

Beyond solar lights, Star 8 is introducing its VAYA range of exciting electric scooters and road approved electric motorbikes.

Take advantage of its JUNE END OF FINANCIAL YEAR SALE with 20% OFF ALL SOLAR LIGHTS and the opportunity for a pre-order discount on an electric motorbike. Head to www.star8green.com.au to learn more and take advantage of its storewide sale. Get in quick!



Solar Lighting for Tamborine Mountain

“When the power grid goes off, solar lights stay on.”

No cabling,
no power costs

star8green.com.au • 1300 717 141

20% off
all lights
for the month
of June



Star 8 Australia



star8australia

TAMBORINE MOUNTAIN & SURROUNDS

Pethers Rainforest Restaurant

Intimate, romantic dining experience

Open Thursday, Friday and Saturday evenings – quiet, private and very intimate setting, ideal for couples.
28B Geissmann Street
(07) 5545 4577



Tamborine Mountain Distillery

Over 300 international awards

Australia's most internationally-awarded distillery and liquor brand in the New Millennium. Manufacturers of vodkas, liqueurs, schnapps, eaux-de-vie. 7 days, 10am-5pm. 10 Macdonnell Road
(07) 5545 3452



Tamborine Mountain Pizzas

Dine-in, Takeaway, Delivery

Established in 1994, enjoy our signature dough prepared daily on site topped with a variety of fresh ingredients, many locally sourced.
4/11 Main Street
(07) 5545 3888



The Polish Place

Polish Restaurant. Cottages. Gallery. Coffee. Vodka. A true Polish Experience

With 180° views overlooking the Great Dividing Range, it's the ideal location to experience luxury accommodation, scrumptious Polish cuisine, beers and vodkas
www.polishplace.com.au
333 Main Western Rd, 5545 1603



Rainforest Restaurant & Lounge Bar

Dining within a tranquil rainforest setting!

"Loved the atmosphere and the service was very warm and friendly. The food was beyond great and we would love to come back every night if we could. Fantastic." Brad.C - The Fork

Thunderbird Park, Cnr Cedar Creek Falls Rd (07) 5545 7990



Fox and Hounds Country Inn

Gold Coast's only Authentic English Pub

Share a hearty dining experience with friends and family, while soaking up the spectacular surrounds. Open for lunch and dinner 7 days.
7 Elevation Drive, Wongawallan
(07) 5665 7582



Three Little Pigs

Bistro and Bar

Fine food and fabulous wine. Perfect place for relaxing and catching up with friends and family, or as a special treat.
13 Main Street
Nth Tamborine 07 5545 4484



Witches Falls Winery & Cellar Door

Tamborine Mountain's only working winery

Wines that shine with individuality and confidence. Enjoy wine tasting in our relaxed and picturesque setting. Locals receive members pricing. Open daily 10am to 4pm weekdays and 10am to 5pm weekends.
79 Main Western Road
(07) 5545 2609



Club Tamborine

Visitors welcome

Your local on the Mountain: Full bar, Bistro, Gaming, Ubet, Keno, Fox Sports, regular live entertainment and bowls in a relaxed environment.
6-12 Beacon Road
(07) 5545 1308



St Bernards Hotel

Idyllic location with sweeping views, spectacular, fine dining for every occasion. Perfect for weddings, functions, conferences. Come and be greeted by our two St Bernards, and enjoy real country hospitality!
101 Alpine Terrace – 07 5545 1177



Tamborine Rainforest Skywalk

Exciting eco-adventure: a unique and thrilling way to explore the rainforest. Café offering delicious light foods, cakes and coffees. Gift shop, carpark and toilets.
333 Geissmann Dr, Nth Tamborine
www.rainforestskywalk.com.au
(07) 5545 5222



Spare Part Solutions

Parts plus expert, personalised advice

We can supply parts for Automotive, 4x4, trucks & earthmoving, motorbikes, bicycles, general engineering, mowers, small machinery and more.
24 Main Street 07 5545 1988



Tamborine Mountain Pasta

TAKE AWAY

OPEN 7 days:

11.30am – 2.30 pm lunch
5pm – 8pm dinner

Shop 1A, 15 Main Street
North Tamborine

ph: 5545 3795



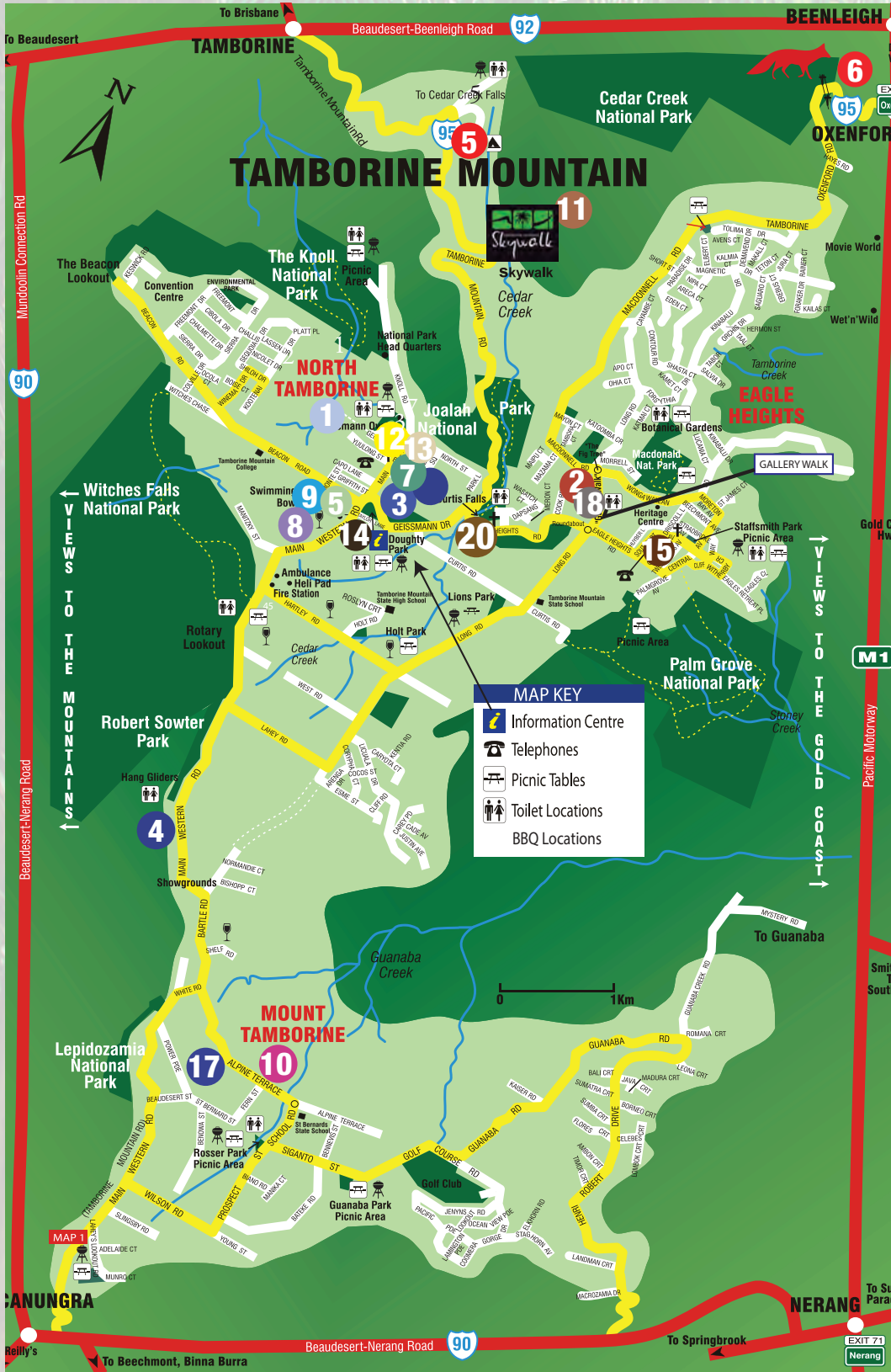
El Burro Cantina

Come for the warmth, laughter and great MEXICAN FOOD!
• Fully licensed • Great for parties!
• Takeaway available

Flame Tree Plaza
16-20 Main Western Rd
North Tamborine 07 5545 4003



LOCAL DINING, SHOPPING AND SERVICES



EAGLE HEIGHTS BAKERY

25 Southport Ave, Eagle Heights



15

Open 7 days - 9.30-5pm
(including public holidays)
14 year-old sourdough,
30 different breads & flours

5545 4011

Serving the community for 40 years



TAMBORINE MOUNTAIN



20

All Day Menu - Breakfast, Lunch,
Pizza, Burgers, Boutique Coffee,
Cakes, Vegan & Vegetarian options

1-5 Eagle Heights Road
North Tamborine
07 5545 1888

OPEN
7
DAYS



TAMBORINE MOUNTAIN COFFEE PLANTATION

On our property, we aim to provide a completely local experience. All of our coffee has been carefully roasted and blended by our team to highlight the flavour of the coffee we grow. Come and try it for yourself, and learn all about how we do it!

64 Alpine Terrace, Tamborine Mountain
@tamborinemtcoffee
www.tamborinemountaincoffee.com.au
07 5545 2777

17

GERMAN
CUCKOO CLOCK
NEST



18

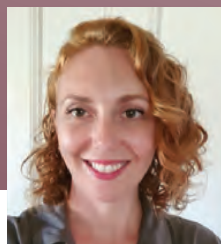
Grandfather • Cuckoo • Mantel
• Wall Clocks • Watches

Watch battery replacement
and clock repairs.

OPEN 7 DAYS 10AM - 4PM

143 Long Road, Tamborine Mountain
Ph: (07) 5545 1334 • info@clocks.com.au
www.clocks.com.au





External Cephalic Versions for a breech baby

Many women will have a baby who is breech at some point in their pregnancy. However, as midwives we are only concerned about this if your baby is breech at 36 weeks.

At each antenatal appointment, your health care provider will feel your belly and work out the baby's position and presentation. If they suspect your baby is breech (with its head up around your ribs and bottom down) at 36 weeks, this needs to be investigated further as the baby will often stay in this position once it is 36 weeks, and discussions will need to be had around birth preferences and plans.

The first step is to confirm if your baby is actually breech, and this is done with an ultrasound scan. Aside from presentation, there are several important factors in making a decision about mode of delivery and chance of success of an external cephalic version (external cephalic version – or ECV – is a procedure used to turn a foetus from a breech position or side-lying (transverse) position into a head-down (vertex) position before labour begins.

These factors include the type of breech (if baby has legs crossed, one leg down, or both legs straight up), the size of the baby (larger babies are harder to turn), and how much amniotic fluid there is (less fluid is harder to turn, lots of extra fluid is easier to turn but the baby is at risk of spinning back to breech).

Once this information is found, options will be discussed with you. Most hospitals will not recommend a vaginal breech birth. This is because you need skilled practitioners present for this birth, and there are complications that can arise, particularly if it is a first baby. That does not mean that vaginal breeches do not take place, but they are less common. The other options are an elective caesarean section, performed around 39 weeks, or an ECV.

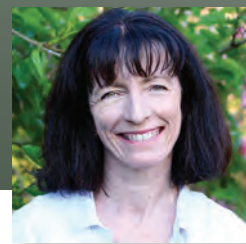
An ECV is performed by a senior obstetrician who regularly performs them. You would be booked to attend the hospital between 37 and 38 weeks pregnant, and a scan performed to confirm baby is still breech. A heart rate monitor (CTG) will then be put on for half an hour or so to check that baby's heart rate is normal. You will then be given a medication that relaxes the muscles of the uterus.

The obstetrician will then use gentle pressure on the outside of your abdomen to help manipulate baby to turn around to a head down position. They do this using ultrasound guidance. The procedure is effective in about 50 per cent of cases. The CTG is then performed for another 30 minutes to ensure baby is not affected by the procedure.

There are some risks with ECV but in the majority of cases they are very safe and effective at turning babies into a head down position. Very rarely (in 0.5 per cent of cases) an ECV can cause an abruption, where the placenta comes away from the uterus, or the baby may become distressed because of the procedure.

If either of these occurs, you would need to go for an immediate caesarean section. There are also other options such as positions you can adopt to encourage baby to turn, or some alternative therapies like acupuncture. If you are interested in these options, speak to your midwife for more information.

Bree Lowing is a Registered Midwife and provides bulk-billed in-home antenatal and postnatal services through The Mountain Midwife www.themountainmidwife.com.au



Attachment Styles

Attachment theory appeared in the 1960s to explain the early emotional bonds between child and caregiver. The central theme of attachment theory is that primary caregivers who are available and responsive to an infant's needs allow the child to develop a sense of security. The infant knows that the caregiver is dependable, which creates a secure base for the child to then explore the world. So, the more secure a child feels, the more likely it is to be curious and adventurous.

Children who are securely attached as infants tend to develop stronger self-esteem and better self-reliance. These children also tend to be more independent, perform better in school, have successful social relationships and experience less depression and anxiety.

Those infants who experience inconsistent caregiving do not have the benefit of a supportive, validating environment. Because the child can't rely on the caregiver to be there when needed they fail to develop any feelings of security from the relationship. Since the child can't depend on the caregiver to be there when it feels threatened, it won't easily move away to explore. It becomes more demanding and even clingy, hoping that its exaggerated distress will force the caregiver to react. The lack of predictability means that the child eventually becomes needy, angry, and distrustful.

It seems an oxymoron that children who are securely attached are more successful at independence than those who have not had the opportunity of secure attachment. This is because the child with an unmet need for security is constantly yearning for it. The drive to have this need met can follow them relentlessly into their adult years.

Early attachments can have a big impact on later relationships. A secure child tends to believe that others will be there for them because previous experiences have led them to this conclusion. Once a person has developed such expectations, he or she will tend to seek out relational experiences that are consistent with those expectations and perceive others in a way that is guided by those beliefs. Those who are secure as children tend to be secure in their adult relationships.

It can be a different story for those who have grown up without feeling truly secure. The avoidance and anxiety that go along with most attachment insecurity are undoubtedly key themes that many people wrestle with. The idea of intimacy can be downright scary for them. Research discovered around 50 per cent of the adult population have a secure style which means 50 per cent experience a form of anxiety with closeness. The good news is it's possible to transition from insecure to secure attachment.

There are helpful resources available to help you identify your attachment style. Becoming aware of your pattern is the first step in making change. Seek out people with secure attachment styles. Be willing to have authentic, intimate conversations. Positive experiences with securely attached people can, in time, help you overcome insecurity and enjoy fulfilling relationships.

Linda Gray
linda@relationshipsanctuary.com.au
0401 517 243

NATURE NOTES

with Nadia O'Carroll

CLOUDS HIGH AND LOW



Storm over Beaudesert by @what.susie.saw

Clouds consist of minute water droplets or ice crystals that are so light that they are suspended in air.

The formation of clouds is a result of the processes of evaporation and condensation.

Water molecules (H₂O) in the atmosphere can be gaseous (water vapour) or liquid (water droplets) or solid (ice). The atmospheric temperature affects the state of the water molecules. High temperatures provide energy for the water molecules bound together as liquid water droplets, to split away and become gaseous water vapour in a process called evaporation. Cold temperatures reduce energy available for the gaseous water vapour molecules; they slow and clump together to form liquid water droplets in a process called condensation.

As a result of the interaction of evaporation and condensation changes in the atmospheric temperature also change the capacity of air to hold moisture i.e., the number of water molecules. Warm air can hold more moisture than cold air because the water molecules are spread out as a gas.

Clouds appear white and opaque because of the effect of light. Sunlight appears as white light, but it is made up of the seven principle colours of the spectrum. Clouds contain an immense number of water droplets or ice particles which reflect and scatter the different wavelengths of visible light producing intact reflected white sunlight.

In the Scenic Rim region, we frequently see white clouds over the sides and tops of mountains and less often we see the spectacular sight of a white sea of clouds forming a dense layer over the plains and valleys far below the surrounding mountains. What causes these differences?

Clouds over mountains can be produced when wind blows onto the side of a mountain and the air is forced to rise. Consequently, it cools, pressure decreases, and condensation occurs forming clouds. Mountains can also form clouds because a mountain is warmer than the air that surrounds it and this causes air to rise and produce clouds.

The sea of low clouds occurs due to a temperature inversion when the air near the surface of the Earth is colder than the air above it - the reverse of the usual vertical temperature gradient. The dense cold heavy layer of air stays close to the ground overlain by warm air, and if there are sufficient moisture levels clouds are formed. However, they can only spread out, but they cannot rise because they are trapped beneath the warm inversion layer of air.

Living
with **DOGS**



American Pit Bull Terriers and American Staffordshire Terriers

Other breeds that fall under the same category are the American bulldog and the Staffordshire terrier. Many of these breeds have a bad reputation and some deservingly so, but most can be good and lovable pets.



Rescue centres and pounds in Australia, America and the United Kingdom are dominated by unwanted bull breed cross dogs and some purebreds. Why are these dogs so common in shelters?

There are many answers; the most likely is that they are a tough, imposing and strong dog which is appealing to many people, but they are also a high energy dog that can require a lot of exercise, training and socialising to become a manageable pet.

All these breeds are derived from dogs that were originally a cross between some type of bulldog and a terrier. It started in England with the English bulldogs that were used for bull and bear baiting as entertainment and betting until the bloody and cruel spectacle was outlawed in 1835 by British Parliament under the Cruelty to Animals Act. Then the dogs were used for "rattin'" – in a pit where rats were released and could not escape and a bulldog was brought in; the winning dog killed the most rats in a certain period of time. That is how the "pit" title began; then dog fighting became popular, and people wanted more agility and speed, so the dogs were crossed with terriers.

The English who emigrated to America in the late 1800s took these dogs with them where they were bred to be even larger and became the American Pit Bull Terrier. These dogs took on an all-purpose role, herding cattle and sheep, guarding livestock and families against thieves and wild animals, helping with hunts and catching hogs. Their loyal and loving demeanor with humans earned them a top place as a work and companion dog. During World War One Pit Bulls were used as the nation's mascot and many served in the war. Humphrey Bogart, Hellen Keller, Theodore Roosevelt, Thomas Edison and many other well-known people owned this breed of dog.

Are they gentle or dangerous? Both; some can act aggressively towards other animals and humans, especially those bred for fighting and guarding, or dogs that have been neglected or abused. Yet even some of those dogs can be rehabilitated. It is well known that Pit Bulls may not start a fight, but they can certainly finish one and most will not tolerate another assertive or bully dog. Many can live peacefully in a house full of pets, but there is always the risk of dormant instincts being stimulated. However, I have known some of these dogs to be great with humans and other animals including cats and chooks which is outstanding for any dog.

**Pam Brandis,
Dip. Canine. Prac.**



TRAVELLING PLACES By Gina Storey

Sitting overlooking the sparkling waters of Auckland Harbour, I am reflecting on a lovely week in New Zealand. The flight was pretty busy. However, the airport was really quiet, and arriving at Auckland was straightforward and easy. Just a simple application form on arrival and a similar form to complete before returning home.



On arrival we headed north to the Bay of Islands, stopping for lunch overlooking the yachts at Whangarei Basin, fresh fish served up from the recent catch. Driving past the soon-to-be-opened Hundertwasser House I made a mental note to return when this museum/gallery opens in the not-too-distant future. This extraordinary Austrian artist/architect made New Zealand home, and this new building will house his collection – there is an interesting connection to home with the artist passing away in Queensland a few years ago.

The Bay of Islands mid-winter found the weather wild and blustery, fantastic for bracing clifftop walks and curling up in front of the fireplace. It took 48 hours for this weather to pass and then to bask in glorious sunshine and temperatures in the mid-20s – somewhat warmer than Tamborine Mountain from what I have heard! Sheep and dairy cows grazing on the green rolling hills, excellent produce and wines to taste and a very friendly welcome.

The Auckland Art Gallery had a fascinating exhibition of contemporary Maori art and we wandered with family around the bays and restaurants of this city just voted the most liveable in the world. Auckland is a lovely city to linger in for a few days – take the ferry to historic Devonport, or venture further through the harbour to Waiheke Island, great for lunch in a local winery.

Like travelling domestically in Australia over the past year, New Zealand can now be added to our close to home adventures. Take your time in New Zealand and immerse yourself in a region rather than trying to see the whole country in a short period of time. The South and North Islands are remarkably different to each other; the history has similarities to ours, yet it also is vastly different.

There are many options to travel – soon there will be expedition vessels exploring remote untouched areas mainly to the south – here you will visit wildlife colonies and see rare and exotic birds. Or hire a car and drive yourselves around – as with Australia, much of the accommodation is heavily booked because of the domestic tourist market, so ensure you prebook rather than be disappointed.

Incorporate one of the famous treks – The Milford Track, the Routeburn Track, or perhaps the Queen Charlotte Sound at the top of the South Island. These treks can be guided and catered, and your luggage taken care of so that you only need to carry a day pack.

Join a small group so that you can relax and allow your guide to design the itinerary and to share local insider knowledge of the hidden restaurants and the best coffee. Or perhaps the trains are your thing – take the Alpine Express across the Alps, or head north of Christchurch along the Kaikoura Coast, or traverse the North Island from Auckland to Wellington. Let us help you design a wonderful holiday to our near neighbour.

Contact Travelling Places at travel@travellingplaces.com.au; or 5545 1600



Going inwards this winter

Winter is a time when we take our yoga practice inwards. It's a beautiful time of year for you to spend more time in quiet, reflective pursuits and a fabulous excuse to do lots of inner work and clearing.

Introversion, however, gets a bad rap in a Western society where everyone applauds busyness, connectedness and flashy social media posts that make one think everyone else has a much more exciting life than you. Our yogic introversion is not social isolation.

It's more using the cold and the added hours of darkness in our winter season to read more, journal more, pursue creative pursuits and in yoga class look inside the body, view where energy is stuck or sluggish and aim to clear the energetic body of these old thoughts and emotions so when spring comes, we radiate more light!

Ayurveda teaches that many illnesses – whether rooted in physical, mental, or spiritual “dis-ease”, arise from a disconnection from and lack of attunement to the cycles of nature. We stay up way too late, staring at bright screens that disrupt the natural release of sleep-inducing melatonin.

Winter, with its natural push to draw inward, can provide a much-needed balance to the constant activity of the mind and the outward flow of attention. If daytime and summer are the phases of doing, night-time and winter represent the time for being.

There are many ways to turn inward. We call going inward pratyahara. Pratyahara is the fifth of the eight limbs of yoga and means “Encouraging the senses to draw inward.” By eliminating distractions, you begin to see that everything you need is within you. That you already have the capacity for happiness, fulfillment and greatness. Below are some ways you can develop this introversion and grow from it:

Take time each day to be quiet: This could be a brief meditation or maybe sit outside and take in that gentle sun.

Practise forward folds in yoga: And look inwards on the way down. Follow the breath and the energy and watch what bubbles up.

Leave something of your ego behind: As you identify memories, emotions and habits you no longer need, decide to release some part of your outer you that is no longer essential to your life. You need to select an aspect of your ego self that you recognise as an obstacle, a false part of yourself that interferes with you seeing yourself clearly and let it go.

Get creative: Creativity allows you to be more receptive to new thoughts and experiences, develop confidence and independence and help you become unconcerned with social norms.

Light some candles: Snuggle around the fireplace with loved ones and friends. Tell your kids stories of your childhood and share memories. De-clutter your social calendar and get to know YOU.

Margot Wagner
Yoga Under the Bodhi Tree

(Find and like articles similar to this on my Facebook Page: Yoga Under the Bodhi Tree)



BONE BROTH

One could safely say after the single digit temperatures we have been experiencing lately, winter is definitely here. This simple bone broth is the perfect base for wholesome hearty winter foods such as beef bourguignon, Irish stew, pretty much any soup and is even delicious on its own as a kind of consume.

This is one of those recipes that I feel every person who values their health should learn how to make. Believe me, I know from personal experience the way my body delights in the nutrient rich liquid when my body is feeling run down and it perks me up tremendously.

It's a simple six step process:

- Roast the meat, bones and vegetables
- Add aromatics and water
- Bring to a low simmer
- Skim
- Remove solids and strain
- Chill

Did you know the difference between a stock and a bone broth is that one has seasoning, and the other doesn't? Bone broth has been seasoned usually with salt in the West and soy sauce in the East. In Chinese medicine, whose origins date back more than 2500 years, bone broth is used to support digestive health, as a blood builder, and to strengthen the kidneys.

Beginning in 12th century Egypt, physician Moses Maimonides was known to prescribe chicken soup as a medicinal remedy for colds and asthma. Maimonides was a rabbi and revered Jewish philosopher so maybe that's one reason chicken soup has been a part of traditional Jewish kitchens for generations. It even earned the nickname Jewish Penicillin for its anti-inflammatory benefits and as a longtime remedy for cold and flu symptoms. Cultures far and wide have nourished their families with bone broths and handmade stocks throughout history for the same reasons we're proud to make it today.

INGREDIENTS

- 3kg meaty beef bones (with lots of marrow) including some knuckle bones, if possible, cut to expose the centre marrow, and include at least a couple veal bones if you can for their gelatine
- 500g stew meat (chuck or flank steak) and/or beef scraps, cut into



- 2-inch chunks
- Olive oil
- 2 medium onions, peeled and quartered
- 2 large carrots, cut into 2cm disks
- 1 large celery, leaves removed, cut into 2cm segments
- 1 leek washed and cut into 2cm strips
- 1 head garlic, cut in half horizontally, unpeeled
- Handful parsley, including stems and leaves
- 2 bay leaves
- 10 peppercorns
- 1 tbs Sea salt

METHOD

Roast the meat, bones, and vegetables:

Preheat oven to 200C. Rub a little olive oil over the stew meat pieces, carrots, and onions. Place stock bones, stew meat or beef scraps, carrots and onions in a large, shallow roasting pan.

Roast in oven for about 45 minutes, turning the bones and meat pieces half-way through the cooking, until nicely browned. If bones begin to char at all during this cooking process, lower the heat. They should brown, not burn.

When the bones and meat are nicely browned, remove them and the vegetables and place them in a large (10-12 litre) stock pot.

Add hot water and scrape up the browned bits:

Place the roasting pan on the stove-top on low heat (will cover 2 burners). Pour 1/2 cup to 1 cup of hot water over the pan and use a metal spatula to scrape up all of the browned bits stuck to the bottom of the pan.

Pour the browned bits and water into the stockpot.

Add vegetables, water, bring to a low simmer:

Add salt, celery, garlic, parsley, bay leaves, and peppercorns to the stock pot.

Fill the stock pot with cold water, to 5cm over the top of the bones. Put the heat on high and bring the pot to a low simmer. Reduce the heat to low.

The stock should be at a bare simmer, just a bubble or two coming up here and there.

Let simmer low and slow for 3-6 hours:

Do not stir the stock while cooking.

Skim scum and fat:

As the stock cooks, fat will be released from the bone marrow and stew meat and rise to the top. From time to time check in on the stock and use a large metal spoon to scoop away the fat and any scum that has risen to the surface.

Remove solids and strain:

When it's time to strain, let it cool for a bit and then carefully remove bones and vegetables with a slotted spoon. Line another large pot with a fine mesh sieve, Pour the stock through the sieve to strain it of remaining solids.

Let cool to room temperature then chill in the fridge:

Once the stock has chilled, any fat remaining will have risen to the top and solidified. The fat forms a protective layer against bacteria while the bone broth is in the fridge.

hooked on books

HARRY POTTER BOOK NIGHT



Dress up and join us for another Harry Potter Book Night filled with magical games and spellbinding activities for witches, wizards and Muggles.

Please note:

- Bookings are essential for health regulations
- There will be some COVID-19 social distancing restrictions.

Thursday 24 May 6pm - 7:30

To join this session please phone 5540 5473

Book Club

Your local library is the perfect place to join a book club. Read new titles, discuss viewpoints and potentially make new friends in the process.



Ask when your local book club meets by contacting us here at the library - 5540 5473

OUR EVENTS

DIGITAL DAYS

Are you keen to improve your digital skills or know someone who is?



Book a one-on-one appointment.

Thursdays between 10am and 12.

Book at Tamborine Mountain Library, or call us on 5540 5473

SCHOOL HOLIDAYS ACTIVITY PACKS

Matchbox miniatures NAIDOC art and poetry

LEGO CHALLENGE

Join us these school holidays and enjoy the challenge of creating, designing and building with Lego!

Friday 2 July 11am

Name the Game

Join us every Wednesday afternoon at 4pm to reveal the game of the week, then stay and play!



We will bring board games to life, unearth old parlour games and battle our way through the weekly challenge. **Ages 8+ Wednesdays 4.00-4.45**

TAMBORINE MOUNTAIN LIBRARY NEWS by Friends of Tamborine Mountain Library

Follow us



Remember to check out the LIBRARY E-RESOURCES

Link from our website or download the app, and log in with your library card.

Books, ebooks and magazines
Movies, languages & puzzles.

A Justice of the Peace is available Monday, Wednesday and Friday 10 am - 12 pm



Fascinating Facts about Libraries

THERE'S A LIBRARY IN ALASKA WHICH HAS A TAXIDERMY COLLECTION (YES YOU CAN USE YOUR LIBRARY CARD TO BORROW THEM)

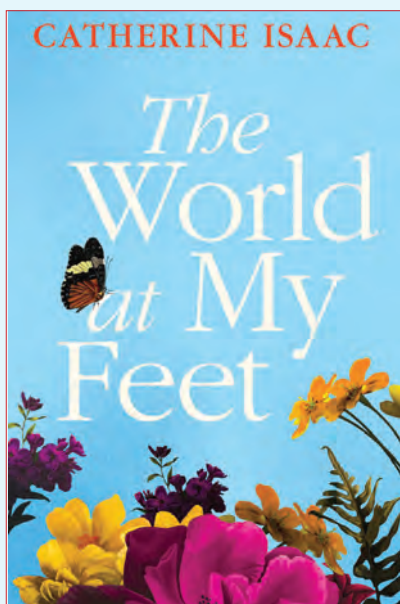
Patrons of the Alaska Resources Library and Information Services in Anchorage can borrow from their collection of taxidermy items, including animals, bones and furs. Bear and wolf fur are among the the popular requests because they're often used in Boy Scout promotional ceremonies: Harry Potter fans opt for snowy owl mounts.

Our Book Choice:

The World at My Feet by Catherine Isaac – 2021

This is a story about the transforming power of love, as one woman journeys to uncover the past and reshape her future. The secrets that bind us can also tear us apart... 1990.

Harriet is a journalist. Her job takes her to dangerous places, where she asks questions and tries to make a difference. But when she is sent to Romania, to the state orphanages the world is only just learning about, she is forced to rethink her most important rule. 2018. Ellie is a gardener. Her garden is her sanctuary, her pride and joy. But, though she spends long days outdoors, she hasn't set foot beyond her gate for far too long. Now someone enters her life who could finally be the reason she needs to overcome her fears. From post-revolution Romania to the idyllic English countryside, *The World at My Feet* is the story of two women, two worlds, and a journey of self-discovery that spans a lifetime.



LIBRARY OPENING TIMES MON-FRI 9AM-5.30PM • SAT 9AM-12PM

Tamborine Mountain Library is proudly operated by Scenic Rim Regional Council.

CLASSIFIEDS

Bookshop & Art Gallery - Under the Greenwood Tree. Open 5 days 10 - 5. Closed Tuesday and Thursday Home deliveries 7 days. Book orders welcomed. 92 Main Western Rd Nth Tamb Ph.0424 586 066 P

Gardening, Mowing, Property Maintenance by friendly, reliable long-term mountain resident. No.1 Property Maintenance. Call Phil 0476 257 045 P

Music Lessons - Bass, guitar, piano. All ages. Have fun & online lessons available now. Ph Craig or text 0478 075 642 P

GRAPHICS & TUITION

GRAPHIC DESIGN/ILLUSTRATION SERVICE & TUTORING



GRAPHICS SERVICE: Business Startup – logos, business cards, letterheads, leaflets, stickers, etc. Quotes for design and printing (**all printing done locally by Coomera Print Hub**)

TUTORING & WORKSHOPS: Children's illustration/cartooning workshops. Tutoring graphic design working with Adobe Illustrator and Photoshop.

INFO: Call Heather on 0415 549 522 or email heather.dale@patchworkdog.com Examples on www.patchworkdog.com.



- Get your ad in front of more than 20,000 readers each week
- Free online exposure, and online advertising opportunities

Call or email

0417 238 238

advertising@scenicnews.com.au



SIGNS

GARAGE SALE SIGNS

Stand out from the crowd with attractive, professional-looking signs for YOUR Garage Sale. (spike/stand included) Signs are free to use, but require a \$10 deposit per sign (refunded when you return them). **Please inquire on 5545 5000.**

POSITION VACANT

Shop Assistant for Bakery, Suit Year 12 school leaver or university student. Casual hours, weekend and weekdays. Call 07 5545 4011 Send Resumé to Eagle Heights Bakery on [facebook](https://www.facebook.com/eagleheightsbakery)

TUTORING - MATHEMATICS

Gr 7-12 (General Maths)

Retired female teacher B Sc, PGCE (Lond) - Reasonable rates, proven results. **Spaces available now.** Ph 5545 4711



Yoga Under the Bodhi Tree – LIVE

YOGA CLASSES: Mon 9.30am Moriarty CC, Canungra. **Tues 9.30am, Fri 8am and Sat 9.30am** Zamia Theatre, Main St, Tamborine Mountain. **Wed 6pm** Creative Arts Centre, Wongawallan Rd, Tamborine Mountain. **ONLINE YOGA CLASSES: Tues 6pm, Wed 9.30am, Sat 7.00am.** For Online Classes text or email me: Margot **0428 137 391** or yogaunderthebodhitree@outlook.com. I will send you an email with a link. Very simple, very low tech. Come and join us! Hatha, Nada and Tantra Yoga. Contact: Margot Y.A (Australia) 0428 137 391. Transform your Life with Yoga.

TRIVIA

TRUE or FALSE?



1. The distance from the Earth to the Moon is four hundred thousand miles.
2. Sri Lanka is to the south-east of India.
3. Albatrosses only inhabit the Southern Hemisphere.
4. On a dartboard, the number 11 section is at the 'nine o'clock' position.
5. Spiders are true members of the insect family.
6. Sound travels at 650 miles an hour at sea level.
7. Tony Curtis once played 'The Saint'
8. The colour 'eau de nil' is a pale blue.
9. The city of Hyderabad is in India.
10. 'Good Vibrations' was the first UK hit for the Beach Boys.
11. 'Inter alia' in Latin means 'amongst other things'.
12. Tchaikovsky composed six numbered symphonies.
13. Venus is larger than Earth.
14. 'Pied a terre' in French means 'cave'.
15. In 2021, no commercial passenger-carrying currently operating aircraft can exceed the speed of sound.
16. The atom is the smallest possible object.

Answers page 25

BUSINESS DIRECTORY – WHO TO CALL

ACCOUNTING

HALL HANNEFORD
CHARTERED ACCOUNTANTS
TAXATION / BAS RETURNS
BUSINESS ADVICE • STRUCTURE SETUPS
SELF-MANAGED SUPERANNUATION
TAX PLANNING • BOOKKEEPING
Shop 3/15 Main Western Road,
Tamborine Mountain
PH: 07 5545 2588
www.accountingonthemountain.com.au

Eagle Taxation
Accounting and Taxation Services; Tax Returns;
BAS Statements; DIY Super and Auditing; ABN
Applications; Tax Planning and Structure
Advice; Non-Profit and Business Audits;
End-of-Life Planning and Document Preparation;
Commercial Agreements; Xero Cloud Accounting
36 Southport Ave, Eagle Heights
☎ (07) 5545 4458
✉ office@eagletax.com.au

Lakehouse Accounting
Let's talk about your business and tax concerns!
Call Noel 0487 999 035
for an appointment or email
noel@lakehouseaccounting.com.au
10 Coomera Gorge Drive
Tamborine Mountain
QLD 4272

AIR CONDITIONING & REFRIGERATION

+45 Years
TAMES
TAMBORINE MOUNTAIN
ELECTRICAL SERVICES
Air Conditioning Service & Breakdown
Sales and Installations
at Competitive Pricing
Call Now 07 5545 7777
Servicing our customers for 45+ years
Licence No. 69488 Arctick AU3560

EZY Freeze
• Domestic Air-Conditioning
• Commercial Air-Conditioning/
Refrigeration
Call Steve
0431 697 302
Best Rates - No Call Out Fee

AIR CONDITIONING & REFRIGERATION

EMIRG SERVICES
AIR CONDITIONING
COMMERCIAL REFRIGERATION
& MECHANICAL SERVICES
BRENDAN GRIMES 0419 009 643
brendan@emirgservices.com.au emirgservices.com.au

ARBORIST

MOUNTAIN TREES
NICK ROUTLEDGE
0438 176 775
Qualified Arborist
mountaintrees@live.com.au
Professional Tree Services

AUTOMOTIVE REPAIRS

TAMBORINE MOUNTAIN
Auto Clinic
Jason Bowles
• Logbook Servicing All Makes Incl Euro
• Specialist in Brakes
• All Mechanical Repairs **RACQ**
• Small Electrical Repairs
• Sublet R.W.C & Air Conditioning
41 Main St Nth Tamborine Ph: 5545 1214

On The Road EST. 2002
AUTOMOTIVE REPAIRS
• Mobile Repairs, Logbooks & Servicing
• RWC Safety & LPG certificates
• Cars, Trucks, Trailers & Floats, Farm Eq't
• Light & Heavy Diesel Repairs
• COI & Measure Ups, Mod. Plates
• Scan Tool Diagnostics
FULLY EQUIPPED WORKSHOP AT TAMBORINE
SEAN 0409 291 053
ACN 111 041 751

BLINDS & CURTAINS

TAMBORINE BLINDS AND AWNINGS
✓ Awnings ✓ Blinds
✓ Security & Flyscreens
✓ 25 Years Industry Experience
RICHARD m: 0405 631 655
KENT h: 5545 0057

BOOKKEEPING

Innovative BEAN COUNTING
BAS and Bookkeeping Services
Focus on your business while we count your beans!
XERO & MYOB Certified Advisor, QuickBooks, Receipt Bank & Hubdoc partnered. 20 Years of experience!
E: info@ibcounting.com.au
W: www.ibcounting.com.au
P: 07 5543 4830
M: 0400 395 805
IPAA INSTITUTE OF PUBLIC ACCOUNTANTS
BAS agent 25894697
AUSTRALIAN BOOKKEEPERS NETWORK
AUSTRALIAN BOOKKEEPERS ASSOCIATION

BRICKLAYING

HOPE BRICKLAYING
Brick and Block Work • Cottage
• Commercial Construction
• Retaining Walls and Fences
Tamborine Local
QBCC Lic 1302284
0449 622 639
Jhbricklaying@hotmail.com

BUILDERS

AGENCY UNO PTY LTD - Builder
LIC # QBCC 1203987
Custom homes, alterations,
renovations, extensions and decks.
Advise and quote.
Call: Simon
Mb: 0422 532 397

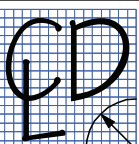
CRAMP BUILDERS Pty Ltd
Architectural Homes Nick Cramp - 0437 017 297
Renovations Rick Cramp - 0407 701 875
Extensions E: info@crampbuilders.com.au
Maintenance ACN 137 984 715 QBCC Lic. 1177904
Commercial Works

All Aspects Of
Building & Renovations
tbi
TOTAL BUILDING IMPROVEMENTS
• RENOVATION SPECIALIST
• BATHROOMS
• KITCHENS
• FULL INTERNAL
Edward Odisho
mob: 0418 788 029
QBCC LIC - 15077381
email: totalbuilding@gmail.com

Want to get YOUR business noticed?
Call or email
0417 238 238
advertising@scenicnews.com.au


BUSINESS DIRECTORY – WHO TO CALL

BUILDING DESIGN



CAMERON DESIGN LOGIC

Ian Cameron
0405 285 341
Adam Cameron
0414 807 265
camdunpl@gmail.com
QBCC 15189980

BUILDING DESIGN & PLAN DRAFTING 

CAR DETAILING

CAR DETAILING – MOBILE SERVICE

Ian Garvie
JP (Qual)

Qld Water Comm. & Commerce Qld
REGIST. WATER EFFICIENT OPERATOR No. 2238

0409 962 348

Health Regulations strictly adhered to



CARPENTRY

AGENCY UNO PTY LTD - Carpenter Builder

LIC # QBCC 1203987

Formwork, framing, fix outs, pitched roofs, staircases, decks, railings, custom hardwood bench tops, renovations.

Advise and quote.
Call: Simon
Mb: 0422 532 397

CHIMNEY CLEANING

SOOTY'S CHIMNEY CLEANING SERVICE

Dust-free cleaning - all areas

sootyschimney@optusnet.com.au
www.sootyschimneycleaning.com.au

0438 733 579



CLEANING

EAGLE HEIGHTS CLEANING SERVICES

Commercial Cleaning
House Cleaning ~ Weekly/fortnightly
Windows • Bond Cleans
Carpet Cleaning

MOBILE 0400 452 054
Cleaning the Mountain since 2001

Answers to TRIVIA from page 23

1. False
2. True
3. True
4. True
5. False
6. False
7. False
8. False
9. True
10. False
11. True
12. True
13. False
14. False
15. True
16. False

COMPUTERS



GRANT I.T. SERVICES

0410 559 136
CAMRON GRANT
grant.it.services@gmail.com

Professional & reliable
ON-SITE TECH SERVICE
for your home or business

PC, Apple or Smart Devices - Repairs - Installations - Upgrades - Networking - Virus Removal & More

LOCAL & SAME DAY RESPONSE




COMPUTEX SOLUTIONS PTY LTD

Onsite in your Home or Business - Installations - Repairs
Upgrades - Virus Removal - Networking - Backups & more
Supporting PCs / Macs / Tablets / Smartphones

call Drew Haldane **0414 014 054**

For all your computer needs

DENTAL PRACTICE

DENTURE CLINIC



Joe Russell
Registered Dental Prosthetist

OPEN

for all your denture requirements

www.tamborinedentures.com

5545 3128

Mon-Fri Every week (excl. holidays)
After-hours appointments available

Shop 10/17 Southport Ave
Tamborine Mountain

CONCRETE

NDC CONCRETE
TAMBORINE MOUNTAIN

Specialising in:

- Driveways
- Patios
- Shed Slabs
- Pool Surrounds
- Concrete Benchtops

QBCC lic. 15131788

NATHAN CUMBERS 0481 387 007

Next DEADLINE:
June 18, 2021

DRESSMAKING

JULIA SINGH
FASHION AND TEXTILE DESIGNER

- DRESSMAKING
- PATTERNMAKING
- WORKSHOPS
- ALTERATIONS

TAMBORINE MOUNTAIN
0467 398 872
HSINGH@WESTNET.COM.AU



DRIVING LESSONS

TAMBORINE DRIVING SCHOOL

0431 857 356

Nicola Durkan
Qualified Instructor



Pickup school, work, home

RED LINE

TAMBORINE MTN DRIVING SCHOOL

Accredited Driving Instructor
Long time local resident

Suzuki Swift Automatic
Free keys2drive lesson

Phone Grant 0478 225 853
Member Aust Driver Training Association



EARTH MOVING

COLES earthworks

Excavators
Bobcats
Trucks

- postholes • pads • trenching • tank holes
- clearing • burnoffs • landscaping

Specialising in:
DRIVEWAYS

Ph: 5545 1979

Making the earth move for you on Tamborine Mountain



EARTH MOVING

FREE QUOTE CALL 0413 941 172

30 YEARS' EXPERIENCE IN ALL ASPECTS OF EARTHMOVING



DANNY'S DIGGERS

Bobcat & Excavator Hire

GRAYS EARTHWORX

5 tonne Excavator, 10 m² Tipper

All Excavations, Postholes,
Rock Walls, Sand, Soil, Gravel
Reliable - Good Rates

PH: GRAY 0431 243 810

BUSINESS DIRECTORY – WHO TO CALL

ELECTRICAL

Bob's Services

Gary Hamblin
Licenced Electrician
25 Years Experience

0413 278 743
thezoo5@bigpond.com



Lic. No. 71041



TAMBORINE MOUNTAIN ELECTRICAL SERVICES

Competitive Pricing and
Guaranteed Work from your
local Master Electricians

Call Now 07 5545 7777

Serviceing our customers for 45+ years

Licence No. 69488

Arctick AU3560



ALL YOUR ELECTRICAL NEEDS FOR
RESIDENTIAL & COMMERCIAL
~ COMPETITIVE PRICING ~
Electricians that provide fast, tidy,
professional service

- New builds
- Renovations
- Upgrades
- Air conditioning
Installations

Call us on **1300 153 726**
admin@knightselectrical.net.au

Knights Electrical Contracting (QLD) P/L * Licence No: 65556 (QLD)

FIVE STAR SECURITY & ELECTRICAL

Lic. No. 59907

ELECTRICAL CONTRACTORS

Domestic • Commercial • Repairs
• Renovations • Upgrades

Phone: **0418 715 380**

SKS Electrical Pty Ltd

Lic No. 73960

Stuart Spalding

0413 435 708

skselectrical11@hotmail.com



Michael Ruttle
0422 882 719
Ruttle@interlectrics.com
Lic:100994

Electrical Installations
New & Renovation
Phone and Data
Fair Prices &
Professional Service
**Local to the
Mountain**

ENGINEERS



GENERAL ENGINEERING
MILLING AND TURNING SERVICE
MIG WELDING & LIGHT FABRICATION
4ST SHOP PRESS
TRAILER AND HORSEFLOAT REPAIRS
OVER 30 YEARS EXPERIENCE

NO JOB TOO SMALL
FREE QUOTES & FRIENDLY ADVICE
FREE PICKUP & DELIVERY TAMBORINE VILLAGE
AND SURROUNDS

B.J. BARNARD
0457845458
BEEZKNEEZENGINEERING@YAHOO.COM



ACS Engineers

CIVIL | ENVIRONMENTAL | PROJECT MANAGEMENT

07 5541 3500

*Providing Professional Engineering &
Civil Design Services to the Scenic Rim*

www.acsengineers.com.au
admin@acsengineers.com.au

FIREWOOD

TD McNEILL QUALITY FIREWOOD

Split, Dry 100% Ironbark by the Tonne
18 Years in Business Locally

When Only the Best Quality will Do!

Phone Trent **0457 244 525**

TAMBORINE MT FIREWOOD SUPPLIES

- * FREE DELIVERY
- * SEASONED TIMBER
- * PROMPT SERVICE

PH: 0418 980 862

Adam



Aged Western Red Ironbark

From \$180 m³

Phone Wayne Kiehne **0419 768 959**

FITNESS & GYM

JOIN YOUR
LOCAL GYM

ACCESS AVAILABLE 24/7
Personal Training & Classes
Follow Facebook@MainFitness
OR www.mainfitness.com.au

8/39 Main St North Tamborine
5545 4774

**24/7
MAINFITNESS**



FITNESS & GYM



**24/7
Community Gym**
for all levels of fitness

Contact **Natasha**
if you are interested
in joining.

Mobile: **0408 739 844**

TRIATHLON CLUB
16 BEACON ROAD,
TAMBORINE MOUNTAIN

GARAGE DOORS & GATES

Adept Garage Doors & Gates



SPECIALISING IN:
Servicing, Repairs, Maintenance,
Installation, Automation & Remotes.
Quality Service, Workmanship & Products

24/7 Emergency Repairs
Ph: **0401 363 757**

www.adeptgaragedoors.com.au



GAS SUPPLIES



CALL FOR AMAZING WINTER SPECIALS!

- No setup fee
- Friendly service
- Competitive prices
- Talk to a person
- Same or next day
delivery

PH **3800 2080**

PH **5548 7100**

plusgas.com.au



Joyan Household Gas

YOUR FRIENDLY LOCAL SUPPLIER



We supply and deliver household gas cylinders
No Rental Charges No Lock In Contracts
No Delivery Fee

Call John **0424 486 986**

HAIRDRESSING



Hair by Melissa

• LADIES • MENS • CHILDREN
• Cutting • Colouring • Styling

Complete In Home Hair Service
Stuck Indoors - I Come to You

0416 825 465

HANDYMAN

Craig the Handyman

For any odd jobs you have wanted done

- Affordable • Reliable • Quality work
- 30 Years Experience

Not your average handyman!

0478 075 642



BUSINESS DIRECTORY – WHO TO CALL

HANDYMAN



Can-Do Handyman Services
Allan Pyne

**Commercial – Domestic
Home & Building Services**

EVERYTHING IS POSSIBLE
From termite damage to
welding repairs & fabrications
Need it done properly? Call ...

0403 067 771 allanspyne@gmail.com

HARDWARE



**TAMBORINE VILLAGE
TRADERS**
HARDWARE – PLUMBING – PRODUCE
SADDLERY – GARDENING – PAINT
M-F 7.30 to 5.30 Sat 7.30 to 3pm Sun 7.30 to 1pm
Ph: 07 5543 8822 Christina
Fax: 07 5543 8866 5 Leach Road
Email: christina@tamborinetraders.com Tamborine QLD 4270

LANDSCAPING & MOWING

Affinity Landscapes
Is your garden ready for spring & summer entertaining?
Would you like to attract wildlife?
Do you want envious friends & neighbours?
Local horticulturalist & lic'd structural landscaper
• Design • Water features • Stonework • Planting
• Paving & retaining walls
• Contemporary, native & formal gardens
MOB: 0411 805 589 – QBCC1115404

Dependable Mowing & Kanga Mini Loader Hire

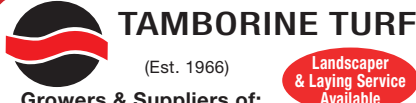
We've Got Your Property Covered!

Small & Large Acreage Mowing
Zero Turn Catching/Mulching Mower
4WD & 6WD Steep Slope Mowers/Slashers
Lawns Maintenance – Aerating Dehatching
Over Seeding, Fertilising, Spraying
Back Yard Earthworks, Trenches,
Soil & Mulch Shifting
Post Holes, Landscaping

Phone/Text Ash Fully insured
0430 110 055



**LANDSCAPE
SUPPLIES**
NOW BIGGER, BETTER, CLOSER!
5545 3390
Dingo Hire with Attachments
Large blocks for retaining walls or heavy-duty control solutions
bagged fertiliser * bagged mulches * crusher dust *
drainage gravels * roadbase * decorative gravels * soils
* mulches * concrete blend * rocks * sleepers * stepping
stones * sands, barks * turf
PLUS MUCH MORE
85 Hartley Road, Nth Tamborine
TUESDAY – SATURDAY 9AM–3PM



TAMBORINE TURF
(Est. 1966)
Landscaper & Laying Service Available

Growers & Suppliers of:

• Wintergreen Couch • Buffalo Grass • Kikuyu Turf
Farm Pick Up or Delivered – Inspections Invited!
(Weekend pickup must be ordered by noon Friday)
tamborineturf.com.au • tjyore@optusnet.com.au

Tom 07 5543 6133 • Office 0423 924 692

LOCKSMITH



**Paul's
Locksmith
Service**
Residential • Commercial
7am - 7pm • 7 Days A Week
Call Paul **0439 355 411**
paulslocksmithservice.com.au

- Over 35 Years of Experience
- Master Locksmith Since 1989
- Prompt & Reliable Professional Service at Sensible Prices
- Scenic Rim Resident

MOWING & GARDENING

GREENWOOD PROPERTY MAINTENANCE

- All lawns – small blocks to acreage
- Hedge trimming
- Brushcutting
- Rubbish removal
- Gutter cleaning etc



PHONE JOHN 0431 953 126

PAINTING



**ALL SURFACE
PAINTING P/L**

- Re-paint Specialists
- Specialise in Timber Restoration
- New Projects Welcome

JOHN RYAN
M: 0414 377 474
E: allsurfacepainting1@gmail.com

YOUR LOCAL INTERIOR & EXTERIOR PAINTER



**THOB'S
PAINTING SERVICES**
Phone Thob's 0455 308 318
thobspaintingservices@gmail.com
OBLIGATION FREE QUOTE

Domestic
Commercial
Industrial
Body Corp
No Job Too Small



**VINCENT'S
PAINTING SERVICES**

- Interior/Exterior Painting
- Roofs & Decks

QBCC 1090914
5545 0098 or 0409 879 184

CJR Queensland
Painting and Maintenance Services
Colin Rose
0414 818 318
cjrose@bigpond.net.au

PAINTING



**Painting
Contractors**
RESIDENTIAL & COMMERCIAL
Gary 0438 175 069
Email: garywferigo@hotmail.com
FREE QUOTES • PROMPT SERVICE



Lowrie Painters
QBCC: 1024341
Interior – Exterior
Quality finish – Mountain Local
Call Matt for a competitive quote
0422 948 753
lowriepainters@gmail.com painter-goldcoast.com.au

PANEL BEATER

ALLAN HAYES
TAMBORINE MOUNTAIN
PANEL & PAINT
PH: 5545 2319
Mob: 0419 735 874
Private and insurance work
Total Car Care

FREE QUOTES WINDSCREENS
PICK UP BRAKES
DELIVERY RUST
FOR R.W.C.

1 HAYES RD
OFF TAMBORINE OXENFORD RD

PEST CONTROL

EDGE PEST CONTROL

- Termite inspections
- Termite treatments and
- General pest control services

QBCC Lic. 1215067
Pest manag't lic. Pmt-0-11839
25 years in the industry
Danny
0421 642 273



**EAST COAST
building & pest**
Your local, trusted, family owned
and operated team

- Building and Pest Inspections
- Termite Inspections
- Termite Management
- Pest Control

1300 910 917
admin@eastcoastbuildingandpest.com.au
www.eastcoastbuildingandpest.com.au

BUSINESS DIRECTORY – WHO TO CALL

PEST CONTROL

Safe Effective Treatment of ALL PESTS

Termite inspections using the latest technologies: Thermal Image Camera, Termatrac etc., and all aspects of Termite prevention and eradication.



END-A-PEST

Exterminators

Over 30 Years' Exp.

Fully Licenced & Insured QBCC 15023710

5545 3957 or 0407 590 790

PHYSIOTHERAPY



Tamborine Mountain

Gary Brooks

tel: 07 5545 0500

16-18 Main Western Rd, Tamborine Mountain

PHYSIQUE PHYSIOTHERAPY



2/10 Main Street, PO Box 102
North Tamborine, QLD 4272

5545 1133

www.physiquehealth.com.au

PICTURE FRAMING & PRINTING

vikingframer.com



Picture Framing • Art Gallery • Printing

vikingframer.com

(07) 5545 2402 0449 250 545

PLASTERING

Gyprock, ornate & suspended ceilings,
fancy cornices, ceiling roses.

All Aspects of Trade

Phone **BRETT CLEARY**

5545 0115

PLUMBING

ALL-WAYS PLUMBING Lic No 745184

ANGEL'S

Specialising in:-

- Maintenance
- Plumbing
- Roofing
- Draining
- Gasfitting

Ph: Dave Angel at Nth Tamborine
Ph: 5545 2369 all hours
Mobile No: 0419 677 008

COBRA PLUMBING
& Drain Clearing P/L QBCC 73572

Maintenance Services

Renovations • No Job Too Small

Mark: 0419 655 802 Local Resident

PLUMBING

Hot Water Install & Repairs Solar, Electric & Gas.

Trust the family owned local
Best service & price!

Ph: 5539 6820



**TODD'S
PLUMBING
& ELECTRICAL**

www.toddsplumbing.com.au

PUMPS



For sales, service
& advice
you can trust ...

House | Filtration | Irrigation | Bore

PHONE 5545 0555 and 5545 4100

We supply & repair PUMPS

- Bore pumps • House Pumps
 - Pool Pumps • Grey-water Pumps
- IRRIGATION & WATER SPECIALISTS

Sales & service
38 Main St, Nth Tamborine
(2 doors from POST OFFICE)

REAL ESTATE

Professionals Serendipity
Real Estate



Elizabeth Stirling

0400 449 978

elizabeth.stirling@professionals.com.au

5545 5000 10-12 Main Street, Tamborine Mountain
www.ProfessionalsTamborineMountain.com.au

Professionals Serendipity
Real Estate



Team Erin & Monique
0427 078 757 0429 004 840

erin.mcgee@professionals.com.au
monique.clemens@professionals.com.au
5543 6444 2205 Beaudesert-Beenleigh Rd, Tamborine
www.ProfessionalsTamborine.com.au

REAL ESTATE

Professionals Serendipity
Real Estate



Team Paul, Heleen & Ton

0419 249 271 0424 591 012

0424 591 011

5545 5000, 10-12 Main St, Tamborine Mountain
www.ProfessionalsTamborineMountain.com.au

Professionals Serendipity
Real Estate



Linda Hogan

0414 300 558

linda.hogan@professionals.com.au

5545 5000 10-12 Main Street, Tamborine Mountain
5543 6444 2205 Beaudesert-Beenleigh Rd, Tamborine

Professionals Serendipity
Real Estate

SARAH

AMY

KYLIE



0429 001 013 0474 315 000 0428 654 000
Sarah Lewis Amy Orr Kylie Edwards

10 - 12 Main Street, Tamborine Mountain, 4272
www.ProfessionalsTamborineMountain.com.au
2205 Beaudesert-Beenleigh Road, Tamborine, 4270
www.ProfessionalsTamborine.com.au

07 5545 4000 07 5543 6444
Mountain Office Tamborine Office

Property Management

The best team to manage your investment

Next DEADLINE:
June 18, 2021

Advertising?

0417 238 238

Call or email

advertising@scenicnews.com.au

BUSINESS DIRECTORY – WHO TO CALL

REAL ESTATE



Team Deb & Mark
 0409 210 362 0407 292 036
 mark.inwood@professionals.com.au
 5543 6444 2205 Beaudesert-Beenleigh Rd, Tamborine
 www.ProfessionalsSerendipityRealEstate.com.au



Oliver Edwards
 0422 500 613
 oliver.edwards@professionals.com.au
 5545 5000 10-12 Main Street, Tamborine Mountain
 www.ProfessionalsSerendipityRealEstate.com.au



Team Michael & Diane
 0434 718 162 0424 653 316
 michael.kratzke@professionals.com.au
 diane.pihl@professionals.com.au
 5545 5000 10-12 Main Street, Tamborine Mountain
 www.ProfessionalsSerendipityRealEstate.com.au



Cherie Todd
 0411 466 442
 RayWhite
 Shop 6,
 9-13 Main Western Rd
 North Tamborine
 07 5545 1303
 cherie.todd@raywhite.com
 www.raywhiteruraltamborinemountain.com.au

**Next EDITION:
 June 24, 2021**

REAL ESTATE



Louis Bartle
 0491 642 980
 RayWhite
 Shop 6,
 9-13 Main Western Rd
 North Tamborine
 07 5545 1303
 louis.bartle@raywhite.com
 www.raywhiteruraltamborinemountain.com.au

EXCLUSIVE SALE PROPERTIES
 Thinking of selling?
 call me Now
KONRAD GALLAHER
 0435 99 66 44
 LOCAL Independent Agent

TESTIMONIALS
 We are extremely grateful for his excellent work and are more than happy to strongly recommend Konrad, Lewis and Liz.
 Many thanks Konrad for not only being our agent, but also for becoming a kind friend, Paul and Joy.

30 + YEARS LOCAL RESIDENT
30 + YEARS SALES EXPERIENCE
 konrad@exclusivesale.com.au
 exclusivesale.com.au

Harcourts Scenic
 Scenic Rim Real Estate
 scenic.harcourts.com.au
 tamborine@harcourts.com.au
 07 5543 8525
 It is about people,
 it is all about you.

REMOVALS/HAULAGE
 Local Country Vic Palmer Interstate Pre-packing
BEENLEIGH REMOVALS
 Incorporating Tamborine Mtn Removals
 Ph: 07 3287 4326
 Mobile 0408 743 244

ROOFING

Martin Foster QBCC 57756
Leak Specialists
FOSTERS ROOFING & GUTTERING
 Your local Tamborine roofer. Over 35 Years' Exp.
 Roofing, Guttering, Leaf Guard, Whirlybirds
 Leaks and Maintenance
 Ph 0417 748 073 Office 5543 8310
 fostersroofingptylt@bigpond.com

AGENCY UNO PTY LTD - Builder
 LIC # QBCC 1203987
 Repairs and replacement of roof, gutter, downpipes and timber work.
 Advise and quote.
Call: Simon
Mb: 0422 532 397

SEPTIC TANK CLEANING
Septic Solutions QLD
 Locally Owned & Operated
Pumping & Cleaning of Septic, Sullage and Holding Tanks
 Grease Traps & Sewerage Treatment Plants
PH: Tony 0439 430 242
After hrs: 07 5543 0242

POWER PUMPING DOMESTIC SERVICES
 Treatment Plants Septic Tanks
 Sullage Tank Grease Traps
 Servicing & Repairs
T 55452692 M 0408633260
 www.yoursepticssystem.com.au

SIGNWRITING & AUTO ART
Auto Signs
 Mountain Resident
 Call Chris
 0410 058 204
 autoartsigns@bigpond.com
 GOLD COAST - MT TAMBORINE - CANUNGRA - BEAUDESERT

- SHOPFRONTS
- CAR, TRUCK, BOAT WRAPPING
- VEHICLE SIGNS
- LIGHTBOXES
- BANNERS
- A-FRAMES
- DIGITAL PRINTING
- BUSINESS CARDS
- FLYERS etc
- DESIGN

Tamborine Mountain
Signs
 • Shops
 • Vehicles
 • A – Frames
 Over 20 Yrs Exp. Free Quotes & Proofs
Call Warwick 0421 363 567
 warwickpage@bigpond.com

SKIP HIRE
TAMBORINE SKIPS
 2-12m³ (cubed) bins available, domestic or commercial
Book online or phone: 0421 507 303
 admin@tamborineskips.com.au | www.tamborineskips.com.au
 Locally owned and operated

STORAGE

ALL TAMBORINE STORAGE

108 MAIN WESTERN ROAD
TAMBORINE MOUNTAIN
PHONE 0417 001 536

SWIMMING POOL SERVICE



For sales, service & advice you can trust ...

PHONE 5545 1126

- Sales, Service and Installation of Pumps, Filtration, Heaters & Cleaners.
 - One off and regular Pool & Spa servicing
 - Pool Chemicals
 - Small Motors and Machinery Servicing
- Monday – Friday 8:30am to 4:30pm Saturday – 8am to 1pm
Closed Sunday & Public Holidays
Shop 2/24 Main St, Nth Tamborine

TELEVISION

JUSTRITE VIDEO SERVICE

SPECIALIST ANTENNA INSTALLATIONS
SATELLITE TV AND DIGITAL RADIO
HOME THEATRE • EQUIPMENT SETUP
WI-FI • TV, PHONE & DATA POINTS

32 Years Experience **Bruce Howsan** Lic No 71342
Ph: **5543 8374** Mb: **0438 761 595**

TILING

Tiling

QBCC LIC. 69815

Adam Sander
0417 616 307

Wall & Floor Tiler

Servicing the Scenic Rim for 10 years

- New & Renovation Work
- Wet Areas & Waterproofing

Peter Himberg 0412 263 556



QBCC 15009741

TREE SERVICES

Batchelor & Sons

LAND CLEARING
STUMP REMOVAL & EXCAVATION

- 24/7 Tree Arborists
- 28+ Years of Experience
- We Care for Your Trees

Call Us **0419 686 908**

Let's talk about your tree care needs!

TREE SERVICES

Tamborine Mtn

Affordable



Tree Service
0418 980 862

Removal & Trimming
Chipping & Stump Grinding
ADAM ROUTLEDGE

TYRES

TAMBORINE MOUNTAIN TYRES
4/39 MAIN ST 5545 2111

- AGRICULTURAL
- TRACTOR
- TRUCK
- NEW WHEELS
- TYRE REPAIRS
- FREE TYRE SAFETY CHECK
- FREE AIR IN YOUR TYRES
- WHEELBARROW
- RIDE-ON
- ATV & QUAD
- WHEEL ALIGNMENT
- TUBES

Find us on Facebook

tamborinemountaintyres.com.au

VET SURGERY



Tamborine Mtn

24 Main Street
North Tamborine

5545 2422

all hours

VETERINARY SURGERY

Mon-Fri 8am-6pm. Saturday 8am-1pm

After Hours Emergency Service Available



Canungra

Cnr Pine Road
& Franklin Street

5543 5622

all hours

VETERINARY SURGERY

Mon-Fri 8.30am-5.30pm. Sat 8.30-11.30am

After Hours Emergency Service Available



Yarrabilba

Cnr Wongawallan Dr
& Adler Circuit

3180 3096

all hours

VETERINARY HOSPITAL

Mon-Sat 8am-6pm. Sunday 9am-12noon

After Hours Emergency Service Available

BALANCE VET



BALANCE VET
REHAB

- Housecalls
- Conventional Medicine
- Physical Rehab
- Acupuncture
- Chiropractic

0431 263 728

WATER SUPPLIES

PONY EXPRESS



MOUNTAIN WATER

Est 1985 - Maurice & Debbie
Friendly, Reliable Delivery

\$190 per load

BSC Approved

7 DAYS A WEEK

Ph: 5545 3935 or 0417 644 498



Quality Mountain Water

100% UV Filtered



Lic. approved by SRRC

Also Gravels, Sands, Soils

Roadbase Tipper Hire

Michael & Odette Johanson

Ph 5545 2225

0407 718 203

WATER TANK CLEANING & REPAIRS



THE H₂O TANK DOCTOR

Lauchlan McConnell

QBSA 062446 (Est. 1988)

www.theh2otankdoctor.com.au

- Water Tank Cleaning & Repairs
- Minimum water loss cleaning systems
- Water filtration solution "Roof to Tap"

Servicing all areas • Free quotes & advice most areas

Ph 5545 3693 or 0407 649 659

WEDDING VIDEO SERVICES

Brisbane-based Videography, specialising in wedding films that capture the natural love & laughter of your day! Also servicing Sunshine Coast & Gold Coast regions. T&C's may apply



www.facebook.com/aleishagraco
aleishagracoilmandphoto/

vimeo.com/aleishagracoilmandphoto

WELDING & FABRICATION



MOBILE WELDING and FABRICATING

EXPERIENCED IN (BUT NOT LIMITED TO):

- Mobile plant & machinery maintenance & repairs
- Farm fence strainer posts & corners custom-built on-site
- Cattle rail fence lines or stable dividers
- Structural steel fabrication & erecting, Shed erection

FULLY INSURED, FULLY MOBILE ONSITE WELDING SERVICE
PLEASE CALL OR TEXT LEX ON 0423 668 542

0423 668 542

WELLNESS AND HEALTH



Sally Glenister
REFLEXOLOGIST

21 years' experience

EAGLE HEIGHTS

0438 735 908

www.sallyglenister.com



REGULAR MOUNTAIN ACTIVITIES

BADMINTON Social players, all levels. Mon 6.30pm to 8.30pm at the Vonda Youngman Community Centre (except Public Holidays).

BOOK READERS GROUP meets once a month, new members welcome. Enquiries at TM library.

BOTANIC GARDENS Forsythia Dr, Eagle Hts - Volunteers' working bee every Thurs morning 8-12. 0409 263 666

CHRONIC FATIGUE FIBROMYALGIA Support Group meets monthly Ph 5545 3134.

FILM CLUB AT THE ZAMIA. Meets every third Sunday at 5.30pm for 6pm screening. Only \$10 annual fee to join which gives automatic membership to the Tamborine Mt Little Theatre group. All movies are free with membership. Films shown range from the classics to foreign and Australian made. Cabaret seating and the old sling back chairs make it a great evening of entertainment where you can bring along your own refreshments or a take away to enjoy during the film.

FRIENDS OF TAMBORINE NATIONAL PARK : meet on the first Saturday of the month (except Jan.) To find out where we will be working contact Len on 3355 7288 or 0428 335 572.

FRIENDS OF TM LIBRARY Quarterly booksales held, other volunteering opportunities available. Contact the library for further information 5540 5473.

JOHN DICKSON CONSERVATION PARK: working bees 1st Monday & 3rd Monday of each month. 8am. Ph: Elizabeth Russell 5545 3601.

MARTIAL ARTS: Kyokushin Karate and Brazilian Jiu-Jitsu. Bully Busters, Self Defence, Discipline. Tamborine Mountain Showgrounds Tues & Friday 5.00pm and Saturday 9.30am Contact Cameron: 0433 633 775

MEDITATION: Tuesdays 7pm – New Thought, New Life Centre 5545 3700.

MEDITATION: (World Community of Christian Meditation), Ecumenical. Tuesdays 8am. St Georges Anglican Church, cnr Dapsang Dr & Eagle Heights Rd. All welcome. 5545 2919.

MOVIES ON THE MOUNTAIN: Regular screenings of latest releases at the Zamia Theatre. Ph 5545 3517.

RELAXED MIND TAI CHI: Mindfulness in motion, Mondays & Fridays 9.30am, Botanic Gardens. Bookings essential. Phone 0420 349 744.

ROTARY ON TAMBORINE MOUNTAIN meets every Wednesday night at 6.30pm for 7.00pm start at the Eagle Heights Hotel. New members and visitors welcome. For information, call David on 0419 743 275

SINGING 4-part Acappella singing for women of all ages. If you love singing, come and join us. 1st and 3rd Thursdays of the month. Knoll Road, North Tamborine. Ph Dianne 0413 339 821 or email bellaacappellatamborine@gmail.com

TAI CHI Tues mornings, Thurs evenings 110 Eagle Hts Rd, Eagle Hts. Phone Gai Wanless 5545 2409.

TAMBORINE MOUNTAIN COMMUNITY CARE

ASSOCIATION: Service Provider for first - level aged care. Transport to medical appointments, Domestic Assistance, Home Maintenance, Social Support Individual & Group, Podiatry and Computer classes. Open: Mon – Fri 8:30 am – 4:30 pm. Volunteers welcome. Contact – 5545 4968 Address: 42, Southport Avenue, Tamborine Mountain, Qld.

TAMBORINE SUSTAINABLE GARDENERS SOC (TSGS), a group of enthusiastic gardeners, meets on the last Saturday of each month. Mrs Sue Morris 5545 0102.

TANGO CLASSES: Every Friday evening at the Zamia Theatre. Beginners class 7.00-8.00pm; advanced class 8.00-9.00pm. Cost is \$30 per couple or \$20 pp. Inquiries call Ron at 0432 559 924.

TM ARTS COLLECTIVE: Meetings are usually held at 7.00 pm on the first Wednesday of the month at a designated location (call 5545 0043 for details). We always welcome visitors and enquiries from new artists and artisans. We stand for a stronger arts community on the Mountain, and continue to lobby for a local community

gallery and arts hub. The Collective benefits from our association with the Brisbane Visual Arts Community (BVAC) and members participate in Brisbane and local arts events.

TM BOWLS CLUB – Friday social 1pm winter & 2pm summer; Sunday Scroungers 10.00am-12.00 noon; barefoot bowls & otherwise by arrangement. Competitions for members as notified. Free coaching, new members always welcome. Enquiries: 5545 1308.

TM BRIDGE CLUB meets each Monday at 5.45pm, Wednesday at 1.15pm, Thursday at 12.45pm and in an Assisted Play session on Friday at 12.45pm for those wishing to learn more in a social environment at the Tamborine Mountain Sports Complex, 400 Long Road.

TM CHAMBER OF COMMERCE: 2nd Wed. of month. Phone 5545 0944 Email: info@tamborinemountainchamber.com.au

TM COMMUNITY KINDERGARTEN ASSOC meets 2nd Wednesday of the month at the kindergarten 23 Coleman Square, North Tamborine at 7.15pm.

TM CREATIVE ARTS: Schedule of Activities MONDAY 9.00am-12.00 noon Patchwork, Quilting, Mahjong. 1.00pm-4.00pm Painting (Tutor fee) 1.15pm-4.15pm Creative Writing (1st,3rd,5th Monday of Month) 6.00pm-9.00pm Mens' Group 7.00pm-9.00pm Sculpture & Pottery **TUESDAY** 9.00am-12.00 noon General Craft, Sculpture & Pottery 9.30am-12.30pm Life Drawing (Model fee) **WEDNESDAY** 9.00am-12.00 noon General Craft, Bridge – 12.30pm - 4.30pm, Sculpture & Pottery, Spinning & Weaving, Embroidery (1st Wed of Month), Machine Sewing (last Wed of Month). **THURSDAY** 9.00am-12.00 noon Sculpture & Pottery, Botanical Drawing 9.00am-1.00pm Weaving (1st & 5th Thursday of month) 1.00pm-4.00pm Wearable Art, (Felting Dyeing etc) **FRIDAY** 9.00am-12.00 noon Wood Artisans, Sculpture & Pottery, 1.00pm-4.00pm Mahjong **SATURDAY** 1.00pm-4.00pm Yarners

TM CROQUET CLUB: Monday and Thursday mornings 8.30 on our green at Club Tamborine. Free coaching, new members always welcome to join us. Ph: Heidi 0488 440 296

TM FAMILY HISTORY GROUP Meetings held 1st Sunday each month (excl. January) at TM Historical Soc, Wongawallan Rd, Eagle Heights, 3–5 pm approx. Please contact Sharon on 0401 830 358

TM GARDEN CLUB: Vonda Youngman Community Centre, Main Street, North Tamborine. Feb - Nov, 2nd Tuesday 9.30. BYO morning tea. Enjoy: Guest speaker, plant sales, borrowing library books, raffle, plant problem solving and meeting fellow gardeners. New members and visitors most welcome. email: tamborinemtg@gmail.com mobile: 0417 623 023

TM GOLF CLUB is open 7 days a week for golf. Ladies play on Tuesdays, Veterans play on Wednesdays and the main competition is on Saturday. Happy hour social event on Friday evenings from 5 pm. Coaching is available by Andrew Revie the club professional. Contact 5545 1788. Happy golfing!

TM HISTORICAL SOCIETY – Member working bee & morning tea every Tuesday mornings. New members always welcome. Please contact Phil Paley 5545 4962 or Muriel Shephard 5545 0481 for further details.

TM LANDCARE: Volunteering opportunities: Forest Regeneration Work: Judith Roland - 0429 808 206 for details; Helping at the Piccabeen Bookshop - 0403 783 757 during office hours

TMLETS: Join at Community Exchange System www.ces.org.za . Enq. 5545 3776.

TM LIONS CLUB Admin meeting held on the 2nd Tuesday and dinner meeting on the 4th Tuesday of the month. For more information please phone 5545 2120 or visit website tamborinemountain.qld.lions.org.au/

TM LITTLE THEATRE: Meetings held 1st Tuesday of month at 7.30pm at the Zamia Theatre. Regular plays, play readings & social events, movie club events. New members welcome. Cath Buckley President 5545 2236.

TM LOCAL PRODUCERS ASSOC. sell local produce every Sunday at the TM Showgrounds from 7am - 12noon Phone 5545 1527.

TM MASONIC LODGE: Meets first Thursday each month, except December. Masonic Centre, 10 Knoll Road, North Tamborine. Contact 3273 3313.

TM MEN'S SHED: Our workshop at 88 Beacon Rd (behind the tennis courts) is open each Tuesday, Thursday, and Saturday from 8:30 am to 12:30 pm. New members welcome. To find out more, drop in for morning tea and a chat or call our President on 5606 8367 or check out our web page at www.tmmensshed.com

TM NATURAL HISTORY ASSOCIATION: Birdwatchers – For further information call 5545 0995. Bushwalkers walk on 2nd & 4th Saturday of month. For further information call 5545 0140 or 0419 314 442. www.naturalhistory.org.au.

TM NETBALL CLUB. Contact Tracey 0438 575 662.

TM ORCHESTRA rehearses from 7pm to 9 pm every Wednesday during school term time. The venue is St George's Anglican Church, Dapsang Drive. New players always welcome. For more information, phone Tricia on 0415 487 581. Check us out on our website www.tamborinemountainorchestra.com; or find us on Facebook.

TM PRESBYTERIAN CHURCH 34 Main St, North Tamborine www.tmpcq.org.au Sunday Morning Service 9am (including kids church) and Evening Service 5pm (including kids church). Playgroup: Tuesdays 9.30am for 0-5 years. Youth Group: Fridays 4-6 pm for Years 7 – 12. Enquiries: dave.mugridge@tmpcq.org.au | www.tmpcq.org.au **BARGAIN CENTRE:** Tuesday to Saturday opens 8am – 12 noon (rear of the Presbyterian Church).

TAMBORINE MOUNTAIN COMBINED PROBUS CLUB: Join our new social club for retirees and semi-retired and enjoy some fun, fellowship and friendship at Club Tamborine, 6-12 Beacon Road, North Tamborine from 9.30am on the 2nd Wednesday of the month. Contact Lyndal Drennan (President) on 0450 907 670

TAMBORINE MOUNTAIN PROBUS CLUB INC (MEN'S CLUB): Join like-minded retired and semi-retired men for fun activities at Vonda Youngman Community Centre, 2-4 Knoll Road, North Tamborine on 3rd Wednesday of the month at 10am. Contact Bob Hepple on 0411 776 888 for details of next meeting.

TM PROGRESS ASSOCIATION: 1st Tuesday in month. 7.30pm Heritage Centre Wongawallan Rd

TM RSL Sub Branch meets at the RSL rooms underneath the Bowls Club; details are available by phoning 5545 2030.

TM RUGBY: Training Monday and Thursday 3.45pm- 5pm at TMSA, Long Road. Please call John Knight 0400 554 555 or Adam Clarke 0413 214 066 – Facebook: Tamborine Mountain Rugby

TM TENNIS CLUB: Social tennis from 6.30pm Wed and 3.00pm Sun. Doubles comp from 6.30pm Mon. Ladies from 8.00am Fri. 88 Beacon Rd North Tamborine. Contact Henry Rich on 0477 775 671 or 5545 3547

TM WRITERS GROUP: Meets every 1st & 3rd Mon of month, 1.30–3.30pm at Creative Arts Centre, Eagle Heights. Call Patricia on 5545 3403 for details.

UNIVERSITY OF THE THIRD AGE (U3A). An association for retirees and those preparing for retirement. Learn, teach, socialise. For more info call Delle on 0413 084 571 or access our website www.u3atamborinemountain.com

YOGA: For beginners to advanced students: Hatha, Tantra and Nada Yoga: Tues and Sat 9.30 am and Fri 8am at the Zamia. Margot Wagner 0428 137 391

ZUMBA GOLD: Zumba Gold: dance fitness classes for deconditioned participants and active older adults. Mondays and Thursdays 9.30am at the Zamia. Petra Hunter 0414 505 014 – TamborineMountainZumba@gmail.com



RENTAL 2 2 1 1,440m²

4/44 Southport Ave, Tamborine Mountain

- Located above the Medical Centre adjacent Staffsmith Park
- Modern, bright and spacious rooms
- Open plan kitchen/dining/living area
- Private entrance
- Air-conditioning
- Sorry no pets
- Available 30th June

\$455.00 per week

AGENTS:

Amy Orr 0474 315 000
Tania Lindner-Curran 0428 654 000



SOLD - - - 11.5 acres

1623 Tamborine Oxenford Rd, Wongawallan

Double Trouble! but twice the agent

Michael & Diane would like to congratulate Rodney and Tracey on their purchase of this great block of land. With views like that you can't go wrong. Enjoy

Interested in a current market report & value of your property? Call for a complimentary one!

AGENTS:

Michael Kratzke 0434 718 162
Diane Pihl 0424 653 316



Commercial premises for rent: Shop 1 / 1-3 Main St, North Tamborine



Calendar monthly rent: \$1,435 including GST

AGENTS:

Amy Orr 0474 315 000
Tania 0428 654 000



- Flower Patch on Main is relocating as owner wants to operate business from home
- Walk in Walk out option
- Current lease expires 18.01.2022
- Service Charge: \$100 (currently reduced due to limited operating hours)
- Car space: 1
- Incentives offered

07 5543 6444

ProfessionalsTamborine.com.au
2205 Beadesert-Beenleigh Rd, Tamborine 4270

07 5545 5000

ProfessionalsTamborineMountain.com.au
10 - 12 Main Street, North Tamborine 4272

