



Scenic

News

Tamborine Mountain, Canungra, Tamborine, Beechmont, Beaudesert, Cedar Creek, Boyland

*Celebrating 62 years
of unbroken publication...
www.scenicnews.com.au*

ROTARY CAR SHOW SET TO GO THIS WEEKEND



Tamborine Mountain Rotary's inaugural fund-raising Car Show will be held this Sunday at the Tamborine Mountain Sports Centre. The show will feature several different display categories: Antique, Vintage, Classic, Custom and Muscle cars, as well as Bikes. Grounds will open to the general public from 8am and the show will end at 2pm following award presentations at 1pm. More details Page 14.

Canungra Dental

Twilight
Sedation
Available

NEED TO SEE THE DENTIST?

Dependable. Affordable. Comfortable.

**New Patients Welcome
(07) 5543 5299**



MOVE TO THE GOLD COAST THE CASE FOR AND AGAINST

It was an election promise that I made that Tamborine Mountain would get the opportunity to express its views and vote on moving into the GCCC. Over the last 12 months I have listened to what locals are saying. I represent all Mountain residents and you know my personal views. I have always said I will abide by the result of any quantitative process to determine the will of the majority. My election win was substantive on preferences, but the primary vote was split four ways. This process that we are embarking on, and starts with the case FOR AND AGAINST, is the beginning of the lead up to a **household plebiscite**. Voluntary experts have been involved in planning for this vote, and will be certifying the process to ensure probity and statistical accuracy. After the case 'for and against' is concluded, more information will be announced.

I have looked at all the 'Letters to the Editor' over the last 12 months and present the arguments for the **NO CASE** to stay in Scenic Rim with my response.

1. WE SHOULD BE HAPPY TO PAY HIGH RATES AS SCENIC RIM IS BETTER THAN GCCC WITH A SMALLER RATE BASE.

Logically this make sense, and many will not want to change because they are happy with things staying the same and do not want change. For many, money is not an issue and they can afford any level of rates. The Division 2 Councillor expressed this view in the *Scenic News* Councillor Comments, but he does not live on the Mountain and is conflicted because he is on a councillor wage and may believe there are electoral benefits in supporting some elected officials who are favouring mostly Beaudesert where his Division also extends to.

2. TAMBORINE MOUNTAIN WILL END UP LOOKING LIKE GOLD COAST WITH HIGH RISE AND SMALL LOT SUBDIVISIONS, TRAFFIC LIGHTS AND THEME PARKS. Some have expressed this view.

Response: These are arguments that failed to consider:

- Tamborine Mountain has little developable land left.
- It does not have reticulated water or sewerage therefore ruling out all little boxes and high rise.
- The planning scheme of SRRC would transfer to GCCC until reviewed. It limits subdivision to large lots.
- Community Plans protect a community from overdevelopment as do planning schemes.
- The State's Regional Plan and Vegetation and Koala Habitat Zones and National Parks as well as Native Title laws, to name a few, designates only small areas where development of large lots may occur.
- All councils are required to formulate growth management strategies to be endorsed by the State through public consultation. No council can make arbitrary development decisions as is being suggested.

3. TOURISM DEVELOPMENT WILL INCREASE UNDER GCCC. There is concern even more tourists will be attracted to the Mountain if we are in GCCC. Tourism is a major industry for the Mountain, it is a ECO destination and is unique.

Response: Our own amenity and lifestyle, and employment opportunities are linked to a quality tourism industry.

We need infrastructure which SRRC has not addressed, and after 13 years the problem of congestion, roads and need for better infrastructure is becoming chronic. GCCC promote us as the Green behind the Gold as they recognise the value of Tamborine Mountain. GCCC can mitigate these risks with its larger budgets and capacity.

4. WE WILL BE A SMALL FISH IN A BIG POND AND MAY NOT GET A TAMBORINE RESIDENT AS COUNCILLOR.

GCCC has 17 divisions representing around 27,000 voters each. It is a possibility a Mountain resident may not be elected in the greater council area.

Response: It does not mean we will have less representation. Councillors in GCCC have significant discretionary funds and councillor support staff and sub-offices to ensure the needs of constituents are met. It is still highly possible that a Tamborine Mountain candidate has a chance of winning given the size of our community, and option of preferential voting.

5. MOVING TO GCCC WOULD WEAKEN SCENIC RIM COUNCIL. This is a legitimate question. It is not really relevant to the vote because it is a question the Change Commission would consider based on all the quantitative data.

Response: I have an opinion based on many years' experience in such matters. The council population would reduce from approximately 43,000 down to 35,000, still making it among the top 20 councils by population in Queensland. Tamborine Mountain does contribute a massive rate subsidy to the rest of the region, which means it will have to live within its means by redistributing rates or reducing expenditure. The Mayor is on record as stating at the Vonda Youngman Centre that if the majority supports moving to the GCCC, he would support the wishes of the people.

I trust this is all food for thought. Could we do much better for much less in GCCC ?



Should you wish to discuss anything with me the following are my contact details:

Derek Swanborough: 0401 306 659

Email: swanyusa@gmail.com

These are my own personal views & I do not puport to speak on behalf of Council. Decisions of Council are made only by majority vote.

ADVERTISEMENT



SHARP COMMENT

TOM SHARP



IF YOU CAN'T GOVERN YOURSELVES, HOW CAN YOU GOVERN THE REGION?

Hearing is believing and the Scenic Rim Regional Council Ordinary Meeting held on 13 April needs to be heard to be believed.

Firstly though, what we didn't hear was equally extraordinary.

Every reader would be aware of the passing of Prince Philip, The Duke of Edinburgh, husband of Queen Elizabeth II, the Queen of Australia and Queen of Queensland i.e., our Monarch and our Head of State.



Our constitutional monarchy, modelled on the Westminster system of parliamentary government, gives rise to the State of Queensland under which the municipality of SRRC exists as an act of State legislation.

The future of the monarchy in Australia has been a recurring topic of public debate, yet it still prevails, and while it does, those institutions that survive via its existence should pay its members the common courtesy to which they are entitled and in accordance with the values and principles of the people of this region.

Yet, our council could not afford the time, courtesy, respect, or consideration of a condolence motion recognising the passing of Prince Philip. This simply raises the question: What does this council respect and consider, with special regard to representation? Where was the leadership?

Two items on the council agenda were quite revealing in terms of council priorities versus

the public, transparency, values, and finally respect and leadership or lack thereof during what was at times a toxic meeting that resulted in a slinging match and race to the bottom in terms of any form of decorum.

The first item of interest was the December 2020 Quarterly Operational Report. This report, some 135 pages in length, is as clear as mud, because it provides very little project detail, start and end dates, along with total project costs, given the report excludes labour and overhead costs.

What is worse is that the report is completely redundant given that at the time of the meeting we are now in the June quarter and need to know if these projects will be delivered on time and on budget. Any attempt to find out was thwarted by the Mayor who advised councillors they could only talk to this report. I ask you, what is the point or relevance? The one recurring theme of the report is that as at December a great many projects are not on schedule and the money has not yet been spent.

The other item of note was 10.6 SRRC Brand. Essentially a re-branding exercise of the council logo. This proposal witnessed no public consultation process. The proposal came with no detailed cost and implementation report. The existing logo was designed in consultation with the people only 13 years ago.

This action is being proposed at a time when this region has suffered fire, drought, and Coronavirus. Our region's 'capital' is suffering youth unemployment of 20 per cent and along with it major and growing social issues, rising drug problems and crime. What are council priorities?

Councillor McInnes summed it up as follows: "Does it add value? I cannot see value that this adds to the organisation. I believe there will be a cost; there's always a cost. There's been quite a cost up until now even in staff time and everything else. Everything we do has some sort of cost; I believe the ratepayers would rather see a lot of other things done in their area than a new brand. I think for most people the brand doesn't really mean anything. It probably means more to people outside the area, but I believe most of our ratepayers would like to see their roads in a better state rather than spending money on the brand and changing the brand. I don't think this will be a positive for the council.

Yet council voted in favour of the motion 4 to 2, Councillors McInnes and Swanborough the only two councillors voting against.

The proposal set before the council came with no cost analysis. Instead, the executive made a statement that the cost would be zero to very little because there would be a phase in as assets requiring the logo would be changed as their natural use of life came to an end.

Dear reader would you run your business or household in such a manner?

Average useful life of "road safety signage" for Australian councils is 15 years and there

are some councils that have an adopted life of 30 years. Given we are not talking about road safety but "logo signage", let's assign a life of between 20 and 30 years, and we have an interesting dilemma. The current signage is not yet halfway through its natural life.

This would suggest that for the council to minimise the waste as promised they will be commencing the roadside component of the exercise in 2028 at best.

It gets worse; this segment of the meeting (refer to the audio www.youtube.com/watch?v=J0ck7-ViuQs from 2.39hrs to 3.34hrs) dissolved in to a complete sham of disorderly conduct and a shameful display of leadership and total lack of knowledge with regard to councillors' own meeting procedures determined by them only a few weeks ago. The Mayor stepped way beyond his authority in calling for retractions and apologies while raising points of order against Councillor Swanborough; at the same time councillors either sat silent or goaded the proceedings.

Under their own meeting rules adopted in January this year it states (Rule 30(2) a point of order cannot be used as a means of contradicting a statement made by a councillor speaking about a matter.

Divisional councillors, why did you sit idly by or in some instances join the fray?

Readers, I ask you to listen to the audio and ask yourselves: Is this behaviour in line with your principles and values?

Proposed Development

Make a submission from
30 April to 25 May 2021

Wholesale Nursery Expansion and Garden Centre

Where: 176-180 Long Road & 133 Eagle Heights Road, Tamborine Mountain Qld 4272

On: Lot 2 on RP84569 & Lot 21 on RP891952

Approval sought: Development Permit – Material Change of Use (Wholesale Nursery and Garden Centre)

Application ref: MCU20/105

You may obtain a copy of the application and make a submission to:

Scenic Rim Regional Council
PO Box 25 Beaudesert Qld 4285
mail@scenicrim.qld.gov.au
07 5540 5111
www.scenicrim.qld.gov.au

Public notification requirements are in accordance with the *Planning Act 2016*

WE OFFER:

- Weekly community newspaper
- 7100 distributed - to home letterboxes, and to local businesses
- Get your ad in front of more than 20,000 readers each week
- Free online exposure, and online advertising opportunities
- Modern website - great visibility for you
- Social media coverage included with your advertising
#scenicnews + facebook.com/scenicnews
- Tall A4 size - standout exposure
- High quality gloss print
- 62 years of unbroken publication!
- We cover Tamborine Mountain, Canungra, Tamborine, Cedar Creek & surrounds - bulk drops in Beaudesert

Looking to advertise - reach a bigger audience - have a story to tell?

Call today

0417 238 238 or

advertising@scenicnews.com.au

www.scenicnews.com.au/rates

Editor: Gary Stubbs

0431 722 177

editor@scenicnews.com.au

Production: Andrew Nagy

0432 827 537

info@scenicnews.com.au

**Advertising?
0417 238 238**

Call or email

advertising@scenicnews.com.au

Get ready for 26 May's Lunar eclipse: WIDE ANGLE PHOTOGRAPHY

The Moon appears quite small in a wide angle photo, so the idea behind this kind of picture is to capture the eclipse with an interesting foreground. Any kind of camera can be used for wide angle shooting, but... your camera should allow for exposures of five seconds or more.

- **Make sure** the flash is switched off.
- **Tripod:** you will need a tripod, or any other stable method to stabilise your camera.
- **ISO:** if you can choose, try 400
- **Focal length:** With point and shoot cameras, use wide angle zoom. For other cameras it depends on the lens. If you have a fixed lens then you need to read on the lens its focal length, which is a number of millimetres. If you have a zoom-lens then you choose how much you will zoom and then read the focal length of that. Any focal length between 18 and 35mm will do.
- **Exposure time:** If your exposure time is too long, you will see star trails in the photo, and the Moon will get even more blurry. Here the 500 Rule kicks in: 500 divided by the focal length = the longest exposure (in seconds). If you have 24mm focal length, then $500 / 24 = 21$ seconds. The maximum exposure is therefore 21 seconds.
- **Exposure:** You select an exposure time between five and 30 seconds, where the maximum exposure time is calculated with the 500 Rule but you can select a shorter time.
- **That's it almost:** To release the shutter you have to touch the camera. To avoid that, a remote control is very helpful; alternatively, you could use the self-timer function.
- **Foreground:** For wide angle photography you like to get an interesting foreground: houses, bush, trees etc. To make the Moon look really like 'the Moon' or 'the eclipsed Moon', the only way is to take two photos (one of the Moon and one of the foreground) and merge the two in post-processing software.



WATCH THE ECLIPSE TOGETHER

The Wednesday 26 May 2021 lunar eclipse will take place between 6.47 and 11.49pm. The full eclipse will be visible between 9.11 and 9.25pm. TM Universe is organising an informal 'get together' from 6pm on our land at 379 Long Road. Details about the event will be communicated later.

If you attended the last full lunar eclipse on Main Western Road on 28 July 2018, you won't miss this one: we were with almost 1000 others sharing the experience. All you need will be a camera (even a basic one will do in most cases), or binoculars/telescope ... and a tripod (and seat, blanket, drinks, nibbles?). And for the rest we only need (near) clear skies. Get Ready.

Barry Carmichael (Coordinator Stargazing TM Universe)
Stephen Thrum (Head Education TM Universe)

Manufactured in Brisbane by Mr Stoves
FACTORY DIRECT at WHOLESALE PRICES



Proudly installing on Tamborine Mountain
and surrounds for 30 years



ONLY \$1695

Includes
3.6m Flue Kit
worth
\$440



VOGUE HEATING

We can quote, supply and install
all of our products

3375 1464

8 Machinery St, Darra
www.mrstoves.com.au

ALSO OPEN SATURDAY

Open Mon to Fri 8am - 5pm

Sat 8am - Noon

FAMILY OWNED AND OPERATED

07 5545 2522



Here is something to smile about: Mention this ad, and your check-up, clean and x-rays procedure is only \$200 (limited time only).

Tamborine Mountain Shopping Square
17-27 Main Western Road, North Tamborine
ehdcreception@eagleheightsdental.com.au
www.eagleheightsdental.com.au

BRILLIANT CLIVIAS AT THE GARDENS \$5 SALE



If you love masses of clivias in your garden, your dream can come true with a \$5 sale at the Tamborine Mountain Regional Botanic Gardens.

This is the perfect time of year to plant clivias ready for them to bloom in winter and early spring. The clivias are both drought and shade tolerant. In fact, they love shade.

The Gardens' renowned Potty Potters have been busy preparing a mass of mature bare-rooted clivias ready to go straight into the ground to be enjoyed in the coming months.

The clivias are available for purchase on Wednesday and Thursday mornings - from 8.30am to 11.30am - at the propagation enclosure at the southern end of the Gardens. Simply follow the signs from the stone bridge.

Head Potty Potter, Bobby White, said the team has also assembled a few very special deep coloured miniata clivias for \$10 each. Plant lovers know that most clivias produce a brilliant display of light orange blooms.

Please bring cash as the Gardens do not at this stage have facilities for electronic payment.

The Potty Potters also have a wide range of other species available for sale.

Entry to the Botanic Gardens is free and visitors are most welcome to linger and enjoy the many spaces and plant displays.

Photo: Head Potty Potter Bobby White says the clivias are ready for planting now.

Makers' Market on the Mountain

Handcrafted



8am to 1pm
1st Sunday of the month
6-8 Knoll Road, Tamborine Mtn
The Centre for Regenerative Arts

Contact:
TM Arts Collective
f Tmartscollective Tmao
E: makersmarket.tmao@gmail.com



Property of the week

SALE 🛏️ 3 🛁 2 🚗 2 ✂️ 5.95 acres

A hidden gem! **\$849,000+**

25-55 Simmental Drive, Tamborine

- North facing, steel frame, 3 levels of great family living space
 - Large open kitchen looks out over in-ground pool & patio
 - High ceilings, timber look floating floor, bushland surrounds
- Air-conditioned shed/office, carport, solar HW

AGENTS:

Mark Inwood 0407 292 036
Debra Opie 0409 210 362



Property of the week

SALE 🛏️ 4 🛁 2 🚗 2 ✂️ 3.7 acres

Hinterland family paradise **\$1,197,000**

97 Limerick Drive, Witheren QLD 4275

- Designed for the family life, extensive outdoor living, open plan space, separate studio with kitchenette & in-ground pool
- Raked ceilings, modern decor & mezzanine retreat
- Hinterland views, large shed/workshop & fruit trees

AGENTS:

Oliver Edwards
0422 500 613



YOUR LOCAL EXPERTS IN PROPERTY MANAGEMENT.

PROPERTY MANAGEMENT

Short and long term rentals

Looking for the BEST management team to manage your investment?

You'll be in great hands all year round!

We would love to help you

Call us...

Mountain 5545 4000/ Tamborine 5543 6444

OPEN HOMES Sat 1st

- 10.30 - 11.15 20 Ben Nevis Street
- 11 - 11.45 25-55 Simmental Drive
- 11 - 11.45 1623 Tamborine Oxenford Rd
- 11 - 11.30 43 Central Avenue
- 12 - 12.45 28 Central Avenue



A cool change is coming



Review Buyer: 33-39 Goodsell Cres

Erin was amazing for our recent property purchase. She called us the day it went on the market and we put an offer in that night, it was exactly what we had been looking for! Erin is down to earth, easy to chat to and is happy to spend time at the property without rushing you.

AGENTS: ★★★★★

Erin McGee 0427 078 757
Monique Clemens 0429 004 840



SALE 🛏️ 4 🛁 2 🚗 2 ✂️ 809m²

37 Coleman Square, Tamborine Mountain

- In the heart of town, close to everything - post office, eateries, library, medical ...
- Large pictureque windows, light and bright
- Covered verandahs, separate lounge room
- Separate studio, private gardens, 2 carports

\$780,000+

AGENTS:

Linda Hogan
0414 300 558



SALE 🛏️ 4 🛁 2 🚗 2 ✂️ 809m²

43 Central Avenue, Tamborine Mountain

- Watch the seasons change from most living areas upstairs, with a versatile layout
- Spacious sunlit home with high ceilings
- Downstairs retreat - your guests or family will be more than catered for

\$1,200,000

AGENTS: Ton 0424 591 012

Paul 0419 249 271
Heleen 0424 591 011



SALE 🛏️ - 🛁 - 🚗 - ✂️ 5 acres

24-32 West Road, Tamborine Mountain

- Two large sheds, plenty of water with potable bore, 2 wells with pumps + dam, and income producing avocado trees
- Build your home & enjoy the change of lifestyle and income this opportunity presents

\$1,200,000

AGENTS:

Linda Hogan
0414 300 558



ProfessionalsTamborine.com.au

2205 Beaudesert-Beenleigh Rd, Tamborine 4270

ProfessionalsTamborineMountain.com.au

10 - 12 Main Street, North Tamborine 4272





RENTAL 4 2 3 1,012m²

18 Magnetic Drive, Tamborine Mountain

- Gold Coast views from lounge & entertainment deck
- Separate dining area, 3 bedroom with built-in robes
- Main bathroom with two entries & separate toilet
- Separate granny flat with bathroom & new kitchen
- Single carport with off street parking in front of flat
- Low maintenance gardens but no fenced yard
- Available now

\$ 620.00 per week

AGENTS:

Kylie Edwards 0428 654 000
Amy Orr 0474 315 000



SOLD 2 2 1 m²

32/5-15 Cook Road, Tamborine Mountain

Great place to retire
Congratulations to both the vendors and buyers of Unit 32 in Eagle Brook. This is a lovely property and a fantastic way to spend your retirement, with like minded people and so close to everything

Interested in a current market report & value of your property?
Call for a complimentary one!

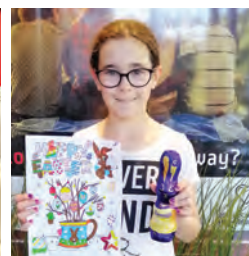
AGENTS: Team Ton, Paul, Heleen
0424 591 012 0419 249 271
0424 591 011



Easter Colouring-In Competition Winners



Thank you for your wonderful entries, & a special mention to the classes at St Bernard State School. We ran out of wall space and had to put them up on our deck blinds!



07 5543 6444

ProfessionalsTamborine.com.au

2205 Beaudesert-Beenleigh Rd, Tamborine 4270

07 5545 5000

ProfessionalsTamborineMountain.com.au

10 - 12 Main Street, North Tamborine 4272



Mother's Day

WINE
FOOD
TOURS

CEDAR
CREEK
ESTATE



SUNDAY, 9 MAY 2021

LUNCH BOOKINGS
07 5545 1666

2 COURSE \$55

3 COURSE \$65

WWW.CEDARCREEKESTATE.COM.AU



Open Day
Saturday
15 May
10-2.30pm

Introducing the

Rising Stars Scholarship

Upper Primary Years 5 & 6

Academic, Sporting, Arts
or Drama Excellence.

Yr 7 & 11 Scholarships also available. Refer website for information.

5545 3644
www.tmc.qld.edu.au



JON KRAUSE MP

State Member for Scenic Rim

ACTION ON HOONING

Last week, laws relating to hooning were amended to make it simpler for enforcement action to be taken in relation to vehicles engaged in dangerous road activity. The LNP supported the Labor Government's amendments.

In my view, the law can't go far enough in trying to stamp out what has become a dangerously reckless culture of non-compliance with the law represented by a selfish group of people who think the road is a playground. It's not. And we can't just throw our hands in the air and say, "it's just too hard to enforce this". That is how conduct that should be condemned and be on the margins becomes normalised in our society.

Under the changes, penalties, confiscation, and destruction of vehicle orders can be sheeted home to the owners of vehicles, subject to the owner proving they were not in control of the vehicle at the time of offending. This overcomes a hurdle often presented to police in enforcement – identifying the driver of a vehicle.

This is an extract of my contribution in the Parliament:

"This is a big issue of concern for parts of the Scenic Rim electorate ... there are some very nice straight stretches of road that are conducive to hooning, particularly during the night.

"It dawned on me how much of an issue this is some time last year when I spent the night in Tamborine Village ... It happens to be part of a circuit for hoons in the region. The traffic noise caused by people who were clearly engaging in irresponsible road behaviour through that village was completely overwhelming for residents.

"It is a rural residential area, so it is not as though residences are even close to the roads. It was clear that people were hooning through the area in a very dangerous fashion, and they were doing it with impunity. They had no fear at all that they would be detected and would have enforcement action taken against them.

"While I support the changes to the hooning laws, they do not go far enough. This Government really needs to reflect on how the cultural issues that are manifested through hooning can be addressed. This is not just a traffic management problem, and it is not just a community safety and disturbance problem. This is a problem about people's intolerance and disrespect for the law. They are thumbing their noses at authority and the rights of other road users to use the roads safely and without the fear of hoons causing undue menace on the roads. In my view, we cannot go too hard on people who recklessly and callously use our roads.

"The Thin Blue Line needs to be strengthened when it comes to the enforcement of traffic offences. That comes down to having more police on the roads and more police in peri-urban or rural residential areas such as the one that I represent to ensure that hoons know there is a chance that they will be caught. The police do a good job with the resources they have – but the fact is that they do not have enough resources. They do not have enough police cars, especially on Friday and Saturday nights when a lot of this activity takes place around the region.

"I'll keep on working for better police resources in our region and as strong an approach as possible to address people's concern about hooning."

If you have an issue that you think should be fixed, I encourage you to contact my office, toll-free on 1800 813 960, so I can lobby on your behalf in Brisbane.

ADVERTISEMENT



Jon KRAUSE MP
Member for Scenic Rim

Fighting for our fair share

☎ 07 5515 1100 f JonKrauseMP

Authorised by J.Krause, 91 Brisbane Street, Beaudesert QLD 4285



SCOTT BUCHHOLZ

Federal Member for Wright

RECORD NUMBER OF AUSTRALIANS IN JOBS

The latest labour force figures for March reveal that Australia's economic recovery continues at pace. Our recovery has been so strong that the unemployment rate is now lower than when we came to office with the rate falling to 5.6 per cent in March, down from 5.8 per cent.

Women are leading the jobs recovery, accounting for 55,400 of the 70,700 jobs created for the month. The Government's economic recovery plan has now supported the creation of 947,100 jobs since the height of the pandemic in May 2020. Unprecedented direct economic support to help rebuild the economy, including record levels of investment in skills and training, new infrastructure projects, and tax cuts, has put Australia back on the road to recovery.

RECORD FOR NEW HOME CONSTRUCTION

The number of new home builds increased by a massive 26.6 per cent in the December quarter, according to the latest ABS Building Activity Data. Supported by the Government's HomeBuilder program, construction commenced on 33,761 dwellings, the highest number in more than 20 years. Most importantly, the demand for new homes is driven by first home buyers, not investors. Through the successful HomeBuilder program, the First Home Loan Deposit Scheme and the First Home Super Saver Scheme, the Government is delivering on our commitment to support the construction industry and the more than one million jobs reliant on a strong residential construction sector.

BRINGING OUR TROOPS HOME

The Prime Minister announced last week that Australia would complete the drawdown of our troops from Afghanistan by September. Over the last 20 years, Australia has been a steadfast contributor to the fight against terrorism in Afghanistan through our contribution to the NATO-led mission. More than 39,000 Australian Defence Force personnel have deployed on Operations Slipper and Highroad with around 80 personnel currently stationed in Afghanistan. The Prime Minister paid tribute to the 41 Australian personnel who have lost their lives while serving in Afghanistan, and the many more who were wounded.

VACCINE ROLLOUT IN REGIONAL AUSTRALIA

The national vaccine rollout continued last week. There are now close to 1500 primary care sites across rural Australia to administer vaccines under phase 1b, supporting Australians living in rural, regional and remote communities. Everyone, no matter where they live in Australia, will be offered a safe and effective COVID-19 vaccine, free of charge.

TEACHING STUDENTS THAT RESPECT MATTERS

New online resources are now available to help school students learn about safe, healthy and respectful relationships, including issues around consent and peer pressure. More than 350 videos, digital stories, podcasts and other materials are available free to teachers, students and families.

The Government has invested \$7.8 million in the Respect Matters program to support and promote positive attitudes and behaviours to help prevent domestic, family, and sexual violence. This commitment is part of a significant and broad-reaching package of initiatives under the Fourth Action Plan of the National Plan to Reduce Violence against Women and their Children in 2010-2022.



Letters to the Editor

Readers are reminded that letters to the editor must show full name of writer for publication.

COUNCIL BLOWS WHISTLE ON TM RUGBY HOPES

I attended a meeting on Tuesday morning with Scenic Rim Council and Tamborine Mountain Sports Association (TMSA) to discuss the use of the facilities at Geissmann Oval for Tamborine Mountain Rugby Club.

Readers should be aware, but perhaps are not, that we as a Rugby club have lost our playing surface at our traditional home since 2013 - the Long Road sports facility managed by TMSA - due to resurfacing. To our surprise and due to recent heavy weather, we are now advised we will not have that field back until at least November. This wipes out our club for the whole year and following last year's Covid issues is pretty close to killing our club.

Tamborine Mountain Rugby Club has invested more than \$50,000 sourced via grants (Rugby pavilion and top dressing) with a similar amount of \$60,000 in-kind support to infrastructure such as field lighting and power upgrades, plus the annual right of use and usage fees paid to TMSA that roll straight back into the facility. Therefore, we feel pretty invested into this location. However, due to the issues with the playing surface overuse and pressures faced by the growing clubs such as soccer, it was making more sense to relocate to Geissmann Oval and schedule our gala days to Long Road when requiring two fields (approximately three times per year).

So, we headed to the meeting with a few simple requests regarding Geissmann Oval to make it fit for purpose:

- That field drainage be rectified as soon as possible (It is currently unsafe/dangerous due to the running water and should be fenced off until drainage has been rectified.)
- That the existing unused cricket nets be removed to allow for the minimum sized Rugby field (106m X 70m) - and the affected area be re surfaced with turf.
- That the trees that have grown in front of the lighting columns be removed.

- That the field lighting be upgraded to 100 lux. (currently 40 lux not safe/dangerous)
- That the above be completed by Council/TMSA or grants allocated to the Rugby Club to complete.
- That it was our understanding that the Eagles Football Club had the management rights, so they be taken over by TMSA or by the Rugby Club.

Once these items had been rectified, then as a club we had hoped to move across ASAP and enter into an agreement with the Eagles Football Club that they give the Rugby Club access to the deck, canteen, and change rooms and that we would give access to our Long Road facilities to the Eagles. Basically, we swap our assets, with both clubs and TMSA being able to share facilities when needed.

We believed that we had the backing of TMSA and the Eagles Football club with this solution to the current overcrowding at the Long Road facility.

We were extremely surprised and shocked to learn that none of the above would be possible.

Council has no intention of upgrading Geissmann Oval as a sporting facility. Instead, they intend to demolish the toilets, deck, canteen and change rooms, then spend funds on supplying new unisex toilets. The community would gain very little and lose a facility that has been regularly used for more than my 20 years on the Mountain (I believe 30 years in constant use) and the playing surface will be let slide into disrepair. It sounds like the intention is to demolish.

Surely with a little community consultation, the funds being used to build LESS toilets than we currently have would be better spent on upgrading the facility or granting to TMSA in order help with Long Road.

Long Road is in desperate need of maintenance and upgrades, plus has a huge potential to attract galas, events, sporting fixtures year-round with just a little bit of love and a few dollars.

As a Rugby club, we service the residents of

the Mountain and have had members from Canungra, Jimboomba and Beaudesert, as well as Coomera, Yarrabilba etc (largely due to our schools' catchment). I know that the other sporting clubs service even more of the surrounding communities.

Our club has the ability to attract visiting teams from around Queensland and interstate, as well as internationally (once allowed) as we have done previously, and can easily do again given the right environment and facility.

Mr Christensen, surely wasting money providing the community with less than we currently have as far as toilets are concerned, and destroying facilities such as the canteen/deck, then demolishing community-owned assets such as the Eagles change rooms makes no sense and to me feels like vandalism.

Mr Buchholz, surely federal funding could be found to help a sporting facility such as Long Road with its uniqueness in location and proximity to tourist attractions. Surely the ability to attract the sporting tourism dollar into the Division of Wright while benefitting such a large area is too great an opportunity to pass - especially with the possibility of the Olympics.

Our elected officials feel you both need to sit down with TMSA who have been ready for years to improve our community and help bring employment via tourism to our community benefitting the sports, art and cultural needs.

To our immediate issue with Geissmann Oval, the current plans make it a non-starter for Rugby and pile even more pressure on Long Road. Please reconsider your current stance. We would appreciate a response regarding the above and the vision for both Geissmann Oval and Long Road. How do community sports fit into Scenic Rim/Wright? What is the commitment from Local, State and Federal governments?

**John Knight
President Tamborine Mountain Rugby Club**

continued page 15

ACS Engineers

CIVIL | ENVIRONMENTAL | PROJECT MANAGEMENT

07 5541 3500

Providing Professional Engineering & Civil Design Services to the Scenic Rim

admin@acsengineers.com.au



www.acsengineers.com.au



TAMBORINE MOUNTAIN MEDICAL PRACTICE

14 Main Western Road
North Tamborine
and
Shop 1/17 Southport Avenue
Eagle Heights

Phone: 07 5545 1222

www.tamborinemountainmedical.com.au
online booking service available on this website

50 years of continuous service to the
Tamborine Mountain community

Affiliated with three universities

COMPREHENSIVE HEALTH CARE SERVICE

Opening Hours:

Mon – Thurs 8.30 am – 6:15 pm
Fri 8.30 am – 5 pm
Sat 8.30 am – 12 noon
Sun 8.30 am – 10.30 am

Dr Ann Bennett
Dr Leeann Carr-Brown
Dr Jan Zomerdijk
Dr Sanne Kreijkamp-Kaspers
Dr Henri Coombs
Dr Joe Gambin
Dr Cobie Powell
Dr Hok-Yee Siu
Dr Marije Dalebout
Dr Jardin Taha
Dr Nisha Nangrani
Dr Lauren Ries



Accredited by
 Quality Practice
Accreditation

WINE CHAT

with Witches Falls Winery

WHY WE TASTE WINE



First time wine tasters often tell me they're apprehensive about stepping a foot inside a cellar door, anxious they're not well versed in "proper" wine tasting etiquette.

Do I have to swirl the glass? Should I spit the wine out? Am I doing it right? It's no wonder newcomers can be nervous about the prospect of attending a wine tasting when we are so collectively preoccupied with its protocols, no doubt perpetuated by pop culture portraying the wine world as intimidating and inaccessible, and those who partake as haughty and snobbish.

Here at Witches Falls, our philosophy is simple: we love wine and are passionate about creating unique, exceptional quality, local wines. Having said this, we try not to take ourselves too seriously. There's no one-size-fits-all when it comes to tasting. We see tasting, drinking, and sharing wines as one of life's greatest pleasures, but understand that this doesn't look the same for everyone. Rather than follow the rulebook to a T, we use traditional techniques as a rough guide in creating a unique wine-tasting experience for every individual who walks through our door.

So, if you're new to wine or just on the fence about popping in for a tasting, let me break down a few of the reasons we love to taste wine, and why we think you might too.

One of the principal reasons I love wine-tasting is that it heightens the pleasure I get from drinking wine later on at home or at a restaurant. You learn how to discern different flavours, aromas, and textures in your wine in a way that brings you into the present moment and compels you to sharpen your senses. Some might say it's almost meditative - a practice of revitalising many of our fundamental human capacities: sight, smell, taste, feel.

Wine-tasting also introduces you to a whole new vocabulary for describing your experience. When I first started tasting, I could tell which wines I liked and which I didn't, but often couldn't describe why I liked what I did. But I'm here to tell you, practice makes perfect. The more wines you try, the more confident you become at identifying and vocalising your preferences, which saves you time and money in the long run. Once upon a time I'd gaze vacantly at a wine list or loiter in a bottle shop, bewildered by the magnitude of options - but I'm now more decisive and self-assured that what I pick will suit me.

What I love most about wine tasting is that it brings people together through a shared experience. Whether you're catching up with old friends or breaking the ice on a first date, wine tasting is a fun way to enjoy the company of others.

On that note, a big thank you to all the tasters at last week's final Sunset Sips. The season went out with a bang thanks to the incredible musical talent of Tamborine Mountain's very own *The Inadequates*. We're very much looking forward to welcoming you back for Sunset Sips this coming spring!



**Alexandra Douglas
and the Witches Falls Team**



THE LAST SWIM

Recently we holidayed at the in-laws' beach house, which holds many memories – and of course Grandma and Grandad. Even our 15-year-old Labrador Millie was lucky enough to have spent the first six months of her life there, beach walking and swimming in the creek. It is a bit of an effort for her to get in and out of the car let alone have a day trip to the beach these days (being 105 in human years), so we took the opportunity to bring her with us for the week.

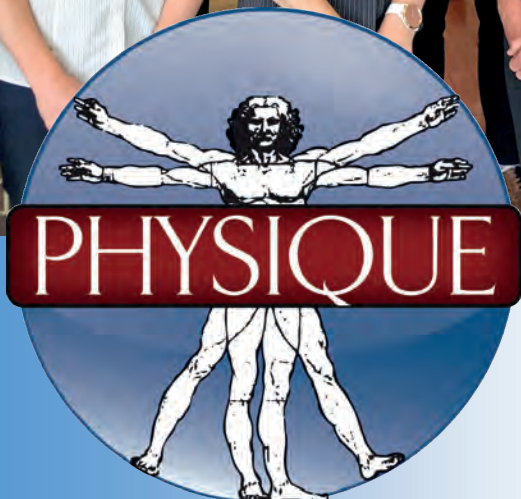
She used to love swimming, rolling in the sand, and turning herself from a black to golden Labrador. However, arthritis started to creep into her joints over the last few years. First, her back right leg started to cramp up and needed a good massage every now and then. Slowly, the arthritis has affected all four legs, with her hips and shoulders becoming constantly stiff and sore. Her muscles have weakened so much that even walking on a flat surface is difficult now, so we had already prepared ourselves for the fact that this would be her last swim.

We chose a spot that was not too far from the carpark and nice and quiet, ready to carry her to the water. Well ... as soon as we touched her feet to the ground and she saw the water she was off. We could not stop her – up and down the beach she went, in and out of the water, sniffing here and there and even trying to chase some other dogs. We couldn't believe it.

I am not sure if it was the memory of the beach, the fact she had heard us saying it was her last swim, or perhaps just her determination that drove her to do it. I stood back and marvelled at how a positive and determined mindset can really change things. She may not have been able to chase the other dogs like she used to or roll in the sand, but she could do something, and she was loving it. She was just soooo happy.

Undoubtedly, she was still in pain due to all her joints being arthritic – but you certainly didn't notice it that day. I thought about how often we can have a fixed mindset about being "old", or "unable to do things". Millie taught me that day that if you enjoy something – or a certain place or environment it can really help you to be active despite the pain or stiffness. Also, having a positive outlook and mindset – focusing on the things we "can do" – is so important.

Sometimes it is difficult to know how much is OK, or how to get started. Believe me, I had to tell Millie to stop walking and sit in the sand for a while so her legs didn't collapse. That's where Physique Physiotherapy comes in too. We love encouraging people to give things a go, focus on the things you can do and even get started on the things you never thought you could get back to doing. If my old dog can teach me something – I really hope we can teach you a thing or two as well!



Experience the difference our hands can make to your life today **5545 1133**

ROTARY CAR SHOW ALL SET TO GO

The inaugural Tamborine Mountain Rotary Car Show will be held at the Tamborine Mountain Sports Centre on Sunday.

The show will feature several different display categories: Antique, Vintage, Classic, Custom and Muscle cars, as well as Bikes.

Grounds will open to the general public from 8am and the show will end at 2pm following award presentations at 1pm. Entry fee is \$10 per adult (children 16 years and under are free). There will be EFTPOS facilities at the gate entrance, but cash payment can also be made. The event is dog friendly.

Market stall holders, including food and coffee vans, will be operating and for children there will be a jumping castle.

Plenty of off-street parking will be available within the grounds and this will be co-ordinated by members of the local Tamborine Mountain SES team.

Attendees have been urged to follow their direction on arrival for parking. Speed limit within the grounds is 10kph.

If you have a vehicle that fits one of the above categories, you are welcome to pre-register for a spot at the car show before Friday 30 April. Scan the QR-code below to secure your registration. This should only take a minute to do and once submitted you will get instant confirmation. If a person wishes to display more than one vehicle, please complete this process for each show vehicle.

QR Code for Pre-Registration



Payment can be made on entry (via EFTPOS) if contact is made with Tamborine Mountain Rotary prior to the day and you have completed the QR code show car pre-registration by 30 April.

The display vehicle is free, and payment will only be for people entry into the Car Show. The owner pays only \$5.

If you already have booked and paid through Eventbrite, please bring the tickets with you as proof of payment. For vehicle owners who have already booked and paid the \$10 or \$20 option, they will be given a \$5 breakfast food voucher on arrival.

No show cars will be accepted on the day without prior arrangement as planning for the event is important to ensure the event runs smoothly.

As a not-for-profit organisation, Rotary will direct all funds raised from this event directly back into the community, supporting schools and youth development, sports clubs, and other community groups.

For additional information, contact Dave Power on 0419 743 275 or email tamborinemountainsatellite@coomerariverrotary.org.au

The Car Show is being sponsored by Eagle Heights Mountain Resort Tamborine Mountain.

REGISTER NOW FOR FREE FIRE ANTS KIT



Residents of Tamborine Mountain should register for the Tamborine Mountain fire ants treatment blitz before 10 May 2021.

Everyone who registers will be provided with a fire ant treatment kit to enable them to treat their properties for fire ants.

Bait can be collected from the Tamborine Mountain Visitor Information Centre from 14 May. A community treatment weekend follows between 21 and 23 May.



Tamborine Mountain Car Show






Sunday 2 May 2021

8am

Grounds open to Public from

Tamborine Mountain Sports Centre - 400 Long Road, Tamborine Mountain

Display / Show Car Registration close on 30th April

Book your show car in now to ensure you get a spot. Grounds open at 6.30am for show cars

Pre-Register Online Now
Use QR Code below

THIS SUNDAY



Bring your family & enjoy viewing hundreds of **Antique, Vintage, Classic, Custom and Muscle cars & Bikes.**

Plus shop at market stalls, food trucks & more...

SPONSORED BY



EAGLE HEIGHTS HOTEL



Letters to the Editor

Continued from page 11

SIGNIFICANT OUTCOMES FOR THE MOUNTAIN

I read with interest the paid advertisement placed by Derek Swanborough in the *Scenic News* of 15 April, in particular Point 12, stating "Our councillors in the entire history of the Mountain have not been welcome and are always the subject of a long string of complaints from within, to try to keep them quiet".

During the 11 years I was the elected council representative for Tamborine Mountain with four of those years as the Deputy Mayor of the Shire, I was able to achieve some significant outcomes for the Mountain:

- The longest distance of footpaths built within the Shire, in fact most of the footpaths we now have.
- The acquisition of the Zamia Theatre plus funds towards its restoration.
- The \$3 million purchase of the sports ground land in Long Road.
- Countless upgrades to roads and drainage.

I was able to facilitate financial support for many local organisations such as Tamborine Mountain Historical Society, Creative Arts, the Escarpment Project which later became known as Land Care, also for the schools that were here at the time to name just a few of the many funding beneficiaries.

All councillors, including the Tamborine Mountain councillor, have always fought for funding

for their own divisions. Keep in mind there is only a certain amount of money available for distribution; it is not a bottomless pit.

Checking with Phil Giffard and Nigel Waistell, both former councillors representing Tamborine Mountain, they agreed they had had a good working relationship with council staff and other councillors as I also had.

I would like to point out that Derek Swanborough was a part of the council bureaucracy during some of my time in office. He brought in many of the recommendations that he now criticises.

Vanessa Bull OAM

Editor: Vanessa Bull was a councillor in the former Beaudesert Shire which was amalgamated with the Boonah Shire and Harrisville and Peak Crossing areas from the City of Ipswich in 2008 to form the Scenic Rim Regional Council.

POISONOUS CULTURE IN SCENIC RIM COUNCIL

In response to Frank White (*Scenic News* 22 April) I have to say that whilst his sentiments are praiseworthy, and his charity beyond question or reproach, I judge his political nous to be virtually non-existent.

In the case of our mayor and his sycophants, turning the other cheek and/or extending the olive branch, to my mind, results in another

metaphorical kick in the head. Our Mayor, it is my firm belief, is a virtual dictator who presides over the most poisonous culture I have ever encountered in any local government.

In my 84 years, traveling all over Australia during my working years, I have never seen another mayor act with such apparent vindictiveness towards a councillor who is merely trying to represent his constituents. I have also never seen a council gang up on a councillor who tries to expose weaknesses in the system and what amounts to a most secretive and lack of transparency way of doing business, as our current council.

As a member of a local organisation that actively supported our Mayor in his first campaign in 2016, I am utterly appalled at how hollow his avowed aspirations were. I stand by every word of my letter of 25 March wherein I asked where all those pre-election promises went. The people who contribute to this newspaper's regular political articles which are critical of the Mayor and the council are spot on.

Whether it is the secrecy in decision making, or the utter disregard for provisions of the planning scheme when assessing development applications, or its attitude to water mining on Tamborine Mountain, or its maintenance of roads throughout the shire, or any of a dozen other issues, this council, under this Mayor is a disgrace.

Roland Lindenmayer

Battling the Bacteria? Murder by Mould? Your Property Pong's? We have a SOLUTION!

We at Spare Part Solutions are very excited to have found 3 highly potent and easy to use products that will help make your home, business and farm a safer and fresher place to be.

#1 For all drinking water containers from portable water bottles and caravan tanks to 100,000litre rainwater tanks, ExStinkt Pure H2O Self Activating Chlorine Dioxide Tablets produce a potent, cost effective and rapid acting biocide and fungicide for the control of bacteria, mould and malodour. In most cases, after only 2 hours, this simple do-it-yourself treatment, leaves the water totally free of any taste or odour. Because this product is highly effective in dealing with biofilm in pipes and the lining of other fluid handling devices, I have found it deals with bad odours in shower water (even though the tank was clean) by killing the biofilm in the delivery pipes. It also cleans the drain pipes and horrible smell from sullage tank water!

#2 A potent, cost effective and rapid acting Odour, Bacteria, Virus and Mould removal system for the control of smoke odour, pet odours, vomit, mould and similar malodours affecting closed rooms and cupboards in homes, rental accommodation and business premises. Also, for your campers, caravans and marine vessels which often star closed up and unused for long periods. Conventional deodorisers absorb or cover up odours with fragrances, but the ExStinkt Odour Sachet oxidises compounds such as animal and human wastes, hydrogen sulphide, mercaptans, organo amines, and odours that are produced by mould, mildew, cigarette smoke and spoiled food. Available in Rapid, Medium or Slow Release kits, all easy to use. Refills available to reduce the cost to you and our beautiful world.

#3 SoSafe mould removal products for exterior and interior surfaces are scientifically proven products, formulated to remove and prevent the regrowth of black mould, mildew, algae, and moss in problem areas. SoSafe mould removal products are gentle on surfaces, easy to apply and a pleasure to work with. SoSafe mould control products not only kill mould and mildew growth, but unlike chlorine and bleach based products, SoSafe mould control products kill the mould spores at the source, eliminating and preventing future mould growth for up to twelve months. Residual Tea Tree Oil within the formulation remains on the surface and is a powerful natural disinfectant. SoSafe is a low ph formulation that, unlike conventional cleaners, can be used on leather, natural timber and soft furnishings without discolouring. Spray-on wipe-off or mop-on mop-off for interior. Back-pack sprayer or pressure cleaner for exterior.

Trading Hours:
Monday – Friday 8.00am to 5.00pm
Saturday 9.00 to 1.00pm
See our Google Listing!



Shop 3, 24 Main Street,
North Tamborine
Call 5545 1988
sales@sparepartsolutions.com.au

TAMBORINE MOUNTAIN & SURROUNDS

Pethers Rainforest Restaurant

Intimate, romantic dining experience

Open Thursday, Friday and Saturday evenings – quiet, private and very intimate setting, ideal for couples.
28B Geissmann Street
(07) 5545 4577



1



Tamborine Mountain Distillery

Over 300 international awards

Australia's most internationally-awarded distillery and liquor brand in the New Millennium. Manufacturers of vodkas, liqueurs, schnapps, eaux-de-vie. 7 days, 10am-5pm. 10 Macdonnell Road
(07) 5545 3452



2



Tamborine Mountain Pizzas

Dine-in, Takeaway, Delivery

Established in 1994, enjoy our signature dough prepared daily on site topped with a variety of fresh ingredients, many locally sourced.
4/11 Main Street
(07) 5545 3888



3



The Polish Place

Polish Restaurant. Cottages. Gallery. Coffee. Vodka. A true Polish Experience

With 180° views overlooking the Great Dividing Range, it's the ideal location to experience luxury accommodation, scrumptious Polish cuisine, beers and vodkas
www.polishplace.com.au
333 Main Western Rd, 5545 1603



4



Rainforest Restaurant & Lounge Bar

Dining within a tranquil rainforest setting!

"Loved the atmosphere and the service was very warm and friendly. The food was beyond great and we would love to come back every night if we could. Fantastic." Brad.C - The Fork

Thunderbird Park, Cnr Cedar Creek Falls Rd (07) 5545 7990



5



Fox and Hounds Country Inn

Gold Coast's only Authentic English Pub

Share a hearty dining experience with friends and family, while soaking up the spectacular surrounds. Open for lunch and dinner 7 days.
7 Elevation Drive, Wongawallan
(07) 5665 7582



6



Three Little Pigs

Bistro and Bar

Fine food and fabulous wine. Perfect place for relaxing and catching up with friends and family, or as a special treat.
13 Main Street
Nth Tamborine 07 5545 4484



7



Witches Falls Winery & Cellar Door

Tamborine Mountain's only working winery

Wines that shine with individuality and confidence. Enjoy wine tasting in our relaxed and picturesque setting. Locals receive members pricing. Open daily 10am to 4pm weekdays and 10am to 5pm weekends.
79 Main Western Road
(07) 5545 2609



8



Club Tamborine

Visitors welcome

Your local on the Mountain: Full bar, Bistro, Gaming, Ubet, Keno, Fox Sports, regular live entertainment and bowls in a relaxed environment.
6-12 Beacon Road
(07) 5545 1308



9



St Bernards Hotel

Idyllic location with sweeping views, spectacular, fine dining for every occasion. Perfect for weddings, functions, conferences. Come and be greeted by our two St Bernards, and enjoy real country hospitality!
101 Alpine Terrace – 07 5545 1177



10



Tamborine Rainforest Skywalk

Exciting eco-adventure: a unique and thrilling way to explore the rainforest. Café offering delicious light foods, cakes and coffees. Gift shop, carpark and toilets.
333 Geissmann Dr, Nth Tamborine
www.rainforestskywalk.com.au
(07) 5545 5222



11



Spare Part Solutions

Parts plus expert, personalised advice

We can supply parts for Automotive, 4x4, trucks & earthmoving, motorbikes, bicycles, general engineering, mowers, small machinery and more.
24 Main Street 07 5545 1988



12



Tamborine Mountain Pasta

TAKE AWAY

OPEN 7 days:

11.30am – 2.30 pm lunch
5pm – 8pm dinner

Shop 1A, 15 Main Street
North Tamborine

ph: 5545 3795



13



El Burro Cantina

Come for the warmth, laughter and great MEXICAN FOOD!
• Fully licensed • Great for parties!
• Takeaway available

Flame Tree Plaza
16-20 Main Western Rd
North Tamborine 07 5545 4003



14



LOCAL DINING, SHOPPING AND SERVICES



EAGLE HEIGHTS BAKERY

25 Southport Ave, Eagle Heights

15

Open 7 days - 9.30-5pm
(including public holidays)
14 year-old sourdough,
30 different breads & flours

5545 4011

Serving the community for 40 years



20

All Day Menu - Breakfast, Lunch, Pizza, Burgers, Boutique Coffee, Cakes, Vegan & Vegetarian options

1-5 Eagle Heights Road
North Tambores
07 5545 1888

OPEN 7 DAYS

TAMBORINE MOUNTAIN COFFEE PLANTATION

On our property, we aim to provide a completely local experience. All of our coffee has been carefully roasted and blended by our team to highlight the flavour of the coffee we grow. Come and try it for yourself, and learn all about how we do it!

64 Alpine Terrace, Tambores Mountain
@tamboresmountaincoffee
www.tamboresmountaincoffee.com.au

17

07 5545 2777

GERMAN CUCKOO CLOCK NEST

18

Grandfather • Cuckoo • Mantel
• Wall Clocks • Watches

Watch battery replacement
and clock repairs.

OPEN 7 DAYS 10AM - 4PM

143 Long Road, Tambores Mountain
Ph: (07) 5545 1334 • info@clocks.com.au
www.clocks.com.au

ANZAC DAY SERVICE 2021

A glorious autumn day welcomed an enthusiastic turnout for this year's Anzac Day service on Tamborine Mountain. Colonel Arran Hassell (below left) and his son Will (top right) made two of the main addresses on a day where there was a notably high participation by younger families, as remarked on by Phil Hunter, President of the Tamborine Mountain RSL Sub Branch.



PAWS FOR HOPE AND UNDERSTANDING

Scenic Rim Council's Get Savvy Health and Wellness Expo at Tamborine Mountain Library (left) was a popular destination for many local residents last week. A wide range of information and free giveaways at the many stalls was snapped up by visitors but the star attraction was undoubtedly the Paws for Hope and Understanding Stall with its team of beautiful service dogs, and their handlers. The dogs are specially trained to help Defence Veterans and Emergency Responders transition from high stress and/or combat environments to general society.



Councillor's Comment

These are my own personal views. I do not purport to speak on behalf of Council.

JEFF McCONNELL
DIVISION 2

COUNCIL

In my last column I spoke about the need for councillors to work with the Mayor to ensure we have a cohesive and functional council. That also goes the other way as well, with the Mayor needing to work with the councillors who are elected by each division.

A council is a democracy where each councillor is given one vote and a majority is needed to pass any motion. If the Mayor is to achieve his vision, then he requires the support of a majority of councillors. We as councillors are not there to just rubber stamp the working of Council but to check and make sure it is in the best interests of the wider community. Obviously, we will always have to pass motions that some in the community will not like, but we must look at the long-term strategic view. The Scenic Rim is a growing region, and we are expecting another 10,000 new

houses over the next 20 years. The State Government has required that Council have a Growth Management Strategy to facilitate this increase and the community consultation has just closed and I wish to thank all those who submitted their suggestions.

BEAUDESERT REVITALISATION

The first stage of the \$8.4 million Beaudesert Revitalisation has been approved and with a massive grant funding boost by the Federal and State Governments of \$7.9 million, this leaves ratepayers with only \$450,000 which is a great deal. Council has opened a pop-up shop across from the council building for those who would like more detail on the project. The second stage will be the Beaudesert Community Hub and Library which will be a huge boost not only for Beaudesert but the for the region. Council will again be requesting funding support from the State and Federal Governments.

TAMBORINE MEMORIAL HALL

It was great to see the hall granted \$53,000 in State funding for some

much-needed upgrades which include a full roof paint, interior painting, new LED lighting (reducing the power bills) and moving some powerlines underground.

BUDGET

Over the next few months, Council will be working on the 2021/22 financial year Budget. If you see me around and want to give me your priorities, please stop me for a chat, or you can email me at the below address.

THOUGHT OF THE DAY:

The time is always right to do what is right. Martin Luther King Jr.

CONTACT ME

I will always be available to talk with residents on my mobile 0436 327 434, or email Jeff.m@scenicrim.qld.gov.au

Follow me on Facebook – Jeff McConnell Councillor for Division 2 Scenic Rim Regional Council

I am happy to meet with anyone who requests a meeting and hope to start regular meetings soon.



TAMBORINE MOUNTAIN

POLICE NEWS

Flushed out, cleaned up, be seeing you soon...

Hello to everyone and welcome back from school holidays. If you had the chance to get away, I really hope you enjoyed it. Perhaps the chocolate fix from the Easter bunny might even be wearing off?? I can imagine the kids were ready for school again, and parents ready for the new semester.

What a busy time during that period it was for us; we had some serious rainfall about the place. Thanks to all Emergency Services and volunteer organisations for coming out and helping with road closures, detours, removal of debris and the like. The roads continue to resemble a patchwork quilt with patch-up jobs everywhere. Please be careful travelling around - with rims likely to be damaged and rocks flicking up cracking windshields. It's not ideal as this can easily cause accidents which my crew unfortunately attend.

This is a timely reminder for all motorists that during times of rainfall, fog, low cloud and low visibility, you make use of your headlights. They help not only yourself but oncoming motorists to remain safe.

National Road Safety Week will be taking place this year in May, so a gentle reminder too that there will be a lot of activity undertaken to help all motorists remain safe and arrive alive.

Police during this holiday period remained busy and vigilant dealing with drug-related matters on Tamborine Mountain. As a result of recent action undertaken, three persons have been charged with various drug related offences. Further, a 37-year-old Tamborine Mountain resident will be appearing in Beaudesert Magistrates Court for a variety of criminal matters arising from an investigative warrant executed at a local address.

We unfortunately had a break-and-enter occur at a local business on Gallery Walk. I'd urge business owners that you review your procedures around storage of valuables and cash, security processes (including internet security) and consider good quality CCTV. It certainly acts as a deterrent and you never know when some rotten low life will try to take advantage of your home and/or business. The crew and I are always happy to assist with queries around business or home security, so please give us a call if needed or make use of the internet for resources.

As always, report matters that might seem suspicious; your information is just a phone call away and may help save someone's life or protect their property; you never know.

Sergeant Mark Shields
North Tamborine Police



TRAVELLING PLACES By Gina Storey

During the 1960s there was a fleet of rail cars operating in New South Wales – the Southern Aurora sleeping carriages. These have recently been newly restored and offer you the opportunity to step back in time when you join the team at Vintage Rail Journeys.

Vintage Rail Journeys has developed a series of rail tours travelling through regional New South Wales. Celebrating Australia's diverse history and rich culture, these journeys visit regional towns, gardens and attractions. You will also travel on rail lines which don't have scheduled passenger services, making this a real adventure.



Unpack only once and enjoy everything that slow rail touring provides. The itineraries are designed so that you only travel during daylight hours. You won't miss any of the spectacular scenery. Sleep on the train when stationary in the restored ex-Southern Aurora Sleeping carriages. Your private cabin offers seating during the day and is made up into a sleeper at night while you are at dinner. Twin compartments have an ensuite bathroom and singles share bathroom facilities at the end of each carriage – much like the Indian Pacific. There are lounge and dining carriages for everyone to enjoy. The chef uses local ingredients from the region you are travelling through to prepare freshly cooked meals. During the day, the train stops for included excursions.

There are four itineraries to choose from. Travel between Brisbane and Sydney or vice versa on a 4 day/ 3-night exploration. Calling into Byron Bay, visit the Slim Dusty Centre in Kempsey and art galleries of the mid north coast. Spend some time at Arakoon National Park and the South West Rocks and stop for a cruise on the Hawkesbury River.

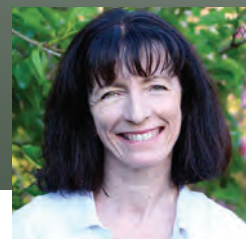
Alternatively, enjoy the 5 day/ 4-night Golden West Rail Tour on a circuit, joining the train in Katoomba in the Blue Mountains, before heading to Bathurst to visit the National Racing Museum and Mt Panorama and the newly opened Bathurst Rail Museum. Wander through beautiful Cook Park and the Adagio alpaca wool mill in Orange. From Dubbo head to Henry Lawson's birthplace of Gulgong and relive the days of the gold rush at the Prince of Wales Opera House. Explore the Hunter Valley wineries and boutiques. Enjoy a lunch cruise on the Hawkesbury before returning to Sydney.

Otherwise head south on the Riverina Rail Tour. Travel along the Illawarra Railway Line through Royal National Park and the South Coast. Visit Australia's oldest inland town Goulburn. Pass small village and country silos on the Canola Trail before stopping in Coolamon to stroll through heritage listed buildings and to taste the produce at Coolamon Cheese factory. Enjoy breakfast at the Piccolo family sustainable farm before visiting the art galleries, wineries and garden of Griffith.

In Temora, visit the Rural Museum and Sir Donald Bradman's childhood home. Or spend your time visiting the Aviation Museum and the RAAF training school from World War Two. Pass through Lithgow and the many tunnels climbing up to the Blue Mountains for a day exploring this beautiful region.

These slow rail journeys on a sleeping train are a wonderful way to explore regional NSW. There are limited departure dates and a limited number of people per trip. The Coastal trip operates in June, The Riverina in October and the Golden West tour in September or November. Accommodation, transport, sightseeing and most meals are included. The cost is \$3995 per person for 4 nights and \$2795 per person for the 3-night adventures. Contact Travelling Places for more details on 55451600 or travel@travellingplaces.com.au

Relationships



D-R-A-I-N

There are some days that we sail through, rising to every challenge, maintaining hope when confronted with obstacles and shrugging off the occasional mishap. Then there are the other days ... days when a slight look or innocuous comment from your partner provokes you to let loose a scathing retort, leaving you to wonder where it came from.

We all have an emotional tank that rises and falls on a daily basis. Our tank is filled through moments of joy, fun, achievement, leisure and rest. It empties through stress, pressure and conflict. When our tank is full, we find it much easier to cope with whatever life brings but when it's empty, mole hills seem like huge mountains.



The same can be said for our relationships. If our emotional tanks are running on short supply, we can find ourselves stuck in a cycle of negativity. Our behaviour and responses drain one another's tank. Russ Harris (*ACT with Love*) has turned DRAIN into an acronym that describes five processes that are guaranteed to drain the vitality out of any relationship: *Disconnection; Reactivity; Avoidance; Inside your mind; Neglect of values.*

When we begin a relationship, we want to learn as much as we can about each other. We connect by paying attention and being genuinely interested in the other person. We listen with curiosity and receptiveness. We make room for whatever they choose to share with us, and we respond by sharing parts of ourselves. When we connect in this way, both partners feel important, cared for, appreciated, respected and valued. The gauge on our emotional tank soars upwards.

Unless we keep our relationship a priority, curiosity and receptiveness tend to diminish over time. Our conversations are no longer about one another. Instead of paying close attention we become easily distracted. This conveys a message that we have no interest in the other person or that we are bored by their company. When one partner disconnects, the other will often retaliate by doing the same and a spiral of disconnection is set in motion.

Safeguarding your connection requires effort. Most disconnection comes about because, to put it bluntly, we get lazy. Our communication switches to autopilot; routine, half-hearted conversations about data and need-to-know information. There is no substance in what we share, much like a chat we might have with a casual acquaintance.

Truly engaging with one another involves sharing what you deeply care about. Sometimes my husband and I discuss controversial topics and explore what each other thinks about them. Not only do we uncover the other's beliefs, but we have an opportunity to discover more about ourselves. More often than not, our opinions are in alignment but even when they differ, we feel a sense of closeness and connection knowing where each other is coming from. Get in the habit of having deep conversations. Put aside assumptions you may hold about your partner and become curious about what they really think.

Stay tuned for more in our DRAIN series!

Linda Gray
linda@relationshipsanctuary.com.au
 0401 517 243



CHEF DYLAN'S
Gourmet Food Co.

food for thought

with DYLAN GITTOES

ANZAC CARAMEL CHEESECAKE

This is one of those desserts almost everyone will enjoy. The best thing about this recipe is that it is no bake so can be whipped up very quickly, whenever I make this delicious tribute to the ANZAC's it always goes down a treat.

You can make your own Anzac biscuits or just as easily buy them; the trick to getting this cake right is to not over beat the cream cheese mixture. This is not the easiest cake to make but once you taste it will become one of those dishes you will make year in and year out. Just as we celebrate each year the sacrifices the young men and woman had to endure during WWII.

When I was 20, I lived near my father in Sydney's southern suburbs in a place called Cronulla. The home the rugby league team the Cronulla Sharks. I was working at a small deli cafe and the coach would often come in for breakfast after morning training. Anzac Day was approaching, and I asked him one morning what the players did on Anzac Day. He said most of them go to the dawn service and then have breakfast at the RSL. I resolved to do the same.

There was a large turnout standing in the dark. Some with flasks of hot tea, others were wrapped in blankets with children asleep in prams. There was air of respect somehow as we all spoke quietly to each other huddled around the Anzac Day memorial. I could smell fresh rosemary in the air and there was a wonderful feeling of gratitude being shared as the sun slowly began to rise the service began.

I felt a tremendous sense of sadness that these young men and women had sacrificed their lives for the freedoms we enjoy but at the same time was so grateful. When the bugle began the play the last post, tears started to stream down my face, I felt foolish but as I looked around I realised I was not the only one. We all then marched down to the RSL where I got to mingle and chat with some Diggers over breakfast. Since that day I have always taken time to remember the fallen on Anzac Day wherever I happened to be in the world. For it was their sacrifice that has enabled me to live in a safe country.

Enjoy making this dessert in honour of



our brave servicemen and women.

Serves 12
Prep time 45 minutes

INGREDIENTS

- 160g Anzac biscuits
- 50 butter melted
- 500g cream cheese
- 400ml thickened cream
- 50ml thickened cream
- 1/3cup castor sugar
- 100ml thickened cream
- 200g white chocolate
- 1 gelatine sheet
- Caramel
- 60g butter
- 1/4 cup brown sugar
- 1/3 cup golden syrup
- 30ml thickened cream

METHOD

Process the biscuits in a food processor until rough crumbs form (not until a dust). Add the butter to the biscuit crumbs in processor and process to combine. Spoon the biscuit mixture into a 20cm round springform pan. Use the bottom of a glass to press entirely over the base. Place in the fridge to chill for 30 minutes.

Meanwhile, take 50ml of thickened cream in a small bowl and heat in the

microwave until hot Sprinkle over gelatine and whisk with a fork until completely dissolved. Set aside for 5 minutes to cool.

Heat 100ml of cream in a jug in the microwave until hot, add white chocolate and stir to melt. You can put it back in the microwave in 10 second bursts if it all doesn't melt the first go.

Chill in fridge for 5 minutes to cool a bit.

Use an electric mixer to beat the cream cheese, sugar in a bowl for 5 minutes or until light and fluffy. Add the 400ml of cream and beat for 2 minutes or until mixture thickens slightly. With motor running, gradually add the gelatine mixture, and the chocolate mixture beating until just smooth.

Pour the cream mixture over the biscuit base. Place in the fridge to chill for 3 hours or until set.

Make caramel: Place butter, brown sugar and golden syrup in a small saucepan over medium heat. Cook, stirring for 5 minutes or until smooth. Stir in cream. Bring to the boil. Simmer for 2 minutes. Remove from heat. Cool for 20 minutes. Pour over cake and set in the fridge.

hooked on books



SCENIC RIM LIBRARIES

We are open at 10am - 4pm

OR

A 'Click and Collect' service
between 9am - 10am

Please note, at this time: Limited printing,
photocopying & scanning

Patrons will need sanitise hands as they
enter and provide their library card number or
details (as per government directives).

Snake Season – Thursday 29 April 4pm Education session

Snakes are on the move, so join us for
a talk with local expert Vanessa Bull about the
how to identify snakes, what
to do when you see one, & first
aid techniques.



Please note Bookings are essential
for health regulations. Held inside the
library whilst closed to other patrons.
There will be some COVID-19 social
distancing restrictions.

Name the Game

Join us every
Wednesday
afternoon at
4pm to reveal
the game of the
week, then stay and play!



We will bring board games to life,
unearth old parlour games and battle
our way through the weekly challenge.

Ages 8+ Wednesdays
4.00-4.45

OUR EVENTS

BABY RHYME TIME

A fun interactive
session of songs,
rhymes, books
and movement to
foster your child's
love of language.
Suitable for parents/
caregivers with babies to children
under three.



Fridays 9:15 - 10:00

To join this session please phone
55405473 or email the library -
library.t@scenicrim.qld.com.au

Tech Savvy Seniors on Thursdays

Are you keen
to improve your
digital skills or
know someone
who is?



Come along or bring a friend to our
free Tech Savvy Seniors workshops
each month or book a one-on-one
appointment.

Thursdays between 10am and 1pm
**Book at Tamborine Mountain
Library, or call us on 5540 5473**



We are closed
for **Anzac Day**
Monday
26 April &
Labour Day
Monday May 3

**TAMBORINE MOUNTAIN
LIBRARY NEWS** by Friends of
Tamborine Mountain Library
Follow us :



LIBRARY E-RESOURCES

Link from our website or download
the app, and log in with your library
card

Books, ebooks and magazines

- BorrowBox
- rbDigital
- National Geographic Virtual library
- Animalia

Movies (including kids)

- Beamafilm
- Kanopy

Learn new things - kids

- Encyclopedia Britannica
- Literacy Planet

Learn new things - adults

- Transparent Language Online
- Universal Class

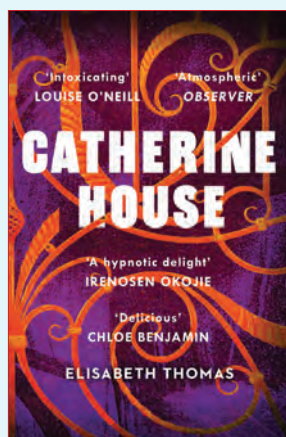
Brain teasers

- Clue Detective Puzzle Agency
- Good Reading - the magazine for
book lovers

**A Justice of the
Peace
is available for
consultation
at the library
every Mon, Wed
and Friday 10am - 12noon**



Our Book Choice: *Catherine House* by Elisabeth Thomas



A story about a dangerously curious young undergraduate whose rebelliousness leads her to discover a shocking secret involving an exclusive circle of students . . . and the dark truth beneath her school's promise of prestige. You are in the house and the house is in the woods. You are in the house and the house is in you...

Catherine House is a school of higher learning like no other. Hidden deep in the woods of rural Pennsylvania, this crucible of reformist liberal arts study with its experimental curriculum, wildly selective admissions policy, and formidable endowment, has produced some of the world's best minds: prize-winning authors, artists, inventors, Supreme Court justices, presidents. For those lucky few selected, tuition, room, and board are free. But acceptance comes with a price. Students are required to give the House three years—summers included—completely removed from the outside world. Family, friends, television, music, even their clothing must be left behind. In return, the school promises its graduates a future of sublime power and prestige, and that they can become anything or anyone they desire. Among this year's incoming class is Ines, who expects to trade blurry nights of parties, pills, cruel friends, and dangerous men for rigorous intellectual discipline—only to discover an environment of sanctioned revelry. The school's enigmatic director, Viktória, encourages the students to explore, to expand their minds, to find themselves and their place within the formidable black iron gates of Catherine.

For Ines, Catherine is the closest thing to a home she's ever had, and her serious, timid roommate, Baby, soon becomes an unlikely friend. Yet the House's strange protocols make this refuge, with its worn velvet and weathered leather, feel increasingly like a gilded prison. And when Baby's obsessive desire for acceptance ends in tragedy, Ines begins to suspect that the school—in all its shabby splendor, hallowed history, advanced theories, and controlled decadence—might be hiding a dangerous agenda that is connected to a secretive, tightly knit group of students selected to study its most promising and mysterious curriculum.

LIBRARY OPENING TIMES MON-FRI 9AM-4PM • SAT 9AM-12PM

Tamborine Mountain Library is proudly operated by Scenic Rim Regional Council.

CLASSIFIEDS

Bookshop & Art Gallery - Under the Greenwood Tree. Open 5 days 10 - 5. Closed Tuesday and Thursday Home deliveries 7 days. Book orders welcomed. 92 Main Western Rd Nth Tamb Ph.0424 586 066 P

Gardening, Mowing, Property Maintenance by friendly, reliable long-term mountain resident. No.1 Property Maintenance. Call Phil 0476 257 045 P

Music Lessons - Bass, guitar, piano. All ages. Have fun & online lessons available now. Ph Craig or text 0478 075 642 P

GRAPHICS & TUITION

GRAPHIC DESIGN/ILLUSTRATION SERVICE & TUTORING



GRAPHICS SERVICE: Business Startup – logos, business cards, letterheads, leaflets, stickers, etc. Quotes for design and printing (**all printing done locally by Coomera Print Hub**)

TUTORING: Learn the fundamentals of Adobe Illustrator and Photoshop. Helping with presentations, portfolios, print setup etc.

COST: \$50 per hr. For more info Call Heather on 0415 549 522 or email heather.dale@patchworkdog.com Examples on www.patchworkdog.com.



Scenic News

- Get your ad in front of more than 20,000 readers each week
- Free online exposure, and online advertising opportunities

Call or email

0417 238 238

advertising@scenicnews.com.au



SIGNS

GARAGE SALE SIGNS

Stand out from the crowd with attractive, professional-looking signs for YOUR Garage Sale. (spike/stand included) Signs are free to use, but require a \$10 deposit per sign (refunded when you return them). **Please inquire on 5545 5000.**

POSITION VACANT

Shop Assistant for Bakery, Suit Year 12 school leaver or university student. Casual hours, weekend and weekdays. Call 07 5545 4011 Send Resumé to Eagle Heights Bakery on [facebook](#)

POSITION VACANT

Senior stylist Self-motivated, covering all facets of hair- perming, colouring, foiling etc. Hours/Days required 8:30-4:30/5:00 day week up to 5 day week (½ day Saturday fortnight). **Call 0438 793 383**



Yoga Under the Bodhi Tree – LIVE

YOGA CLASSES: Mon 9.30am Moriarty CC, Canungra. **Wed** 6pm Canungra Wellness Centre, Kidston St, Canungra. **Tues** 9.30am, **Fri** 8am and **Sat** 9.30am Zamia Theatre, Main St, Tamborine Mountain. **ONLINE YOGA CLASSES: Tues** 6pm, **Wed** 9.30am, **Sat** 7.00am. For Online Classes text or email me: Margot **0428 137 391** or yogaunderthebodhitree@outlook.com.

I will send you an email with a link. Very simple, very low tech. Come and join us! Hatha, Nada and Tantra Yoga. Contact: Margot Y.A (Australia) 0428 137 391. Transform your Life with Yoga.

TRIVIA

Word-wise



1. What is an angekok? A) a fish B) a coat worn by Turkish shepherds C) an Inuit shaman
2. Of what is nostology a study? A) the Arctic B) senility C) predictions
3. What is a firlot? A) a type of cat B) a Scottish dry measure C) a wooden club or stave
4. Which part of the human body is the carpus? A) the wrist B) the ankle C) the shoulder
5. What is a boyar? A) an ornamental vase B) an Asian boar C) a Russian aristocrat
6. What do you do if you sudate? A) sneeze B) sweat C) shout
7. What breed of animal is a Loaghtan? A) a sheep B) a goat C) a pony
8. What is the meaning of the word 'barracoon'? A) a Spanish sword B) to bind with rope C) a temporary holding place for slaves or convicts
9. What would you do to something if you hebetate it? A) plant it B) burn it C) blunt it
10. What is a greenlet? A) an American wild bird B) a glove worn by archers C) a fine-haired artist's brush

ANSWERS PAGE 25

BUSINESS DIRECTORY – WHO TO CALL

ACCOUNTING

HALL HANNEFORD
 CHARTERED ACCOUNTANTS
TAXATION / BAS RETURNS
BUSINESS ADVICE • STRUCTURE SETUPS
SELF-MANAGED SUPERANNUATION
TAX PLANNING • BOOKKEEPING
 Shop 3/15 Main Western Road,
 Tamborine Mountain
 PH: 07 5545 2588
 www.accountingonthemountain.com.au

Eagle Taxation
 Accounting and Taxation Services; Tax Returns;
 BAS Statements; DIY Super and Auditing; ABN
 Applications; Tax Planning and Structure
 Advice; Non-Profit and Business Audits;
 End-of-Life Planning and Document Preparation;
 Commercial Agreements; Xero Cloud Accounting
36 Southport Ave, Eagle Heights
 ☎ (07) 5545 4458
 📧 office@eagletax.com.au

AIR CONDITIONING & REFRIGERATION

+45 Years
TAMES
TAMBORINE MOUNTAIN
ELECTRICAL SERVICES
 Air Conditioning Service & Breakdown
 Sales and Installations
 at Competitive Pricing
Call Now 07 5545 7777
Servicing our customers for 45+ years
 Licence No. 69488 Arctick AU3560

EZY Freeze


- Domestic Air-Conditioning
- Commercial Air-Conditioning/
Refrigeration

Call Steve
0431 697 302
 Best Rates - No Call Out Fee

**Want to get YOUR
 business noticed?**
Call or email
0417 238 238
 advertising@scenicnews.com.au

AIR CONDITIONING & REFRIGERATION

EMIRG
 SERVICES
AIR CONDITIONING
COMMERCIAL REFRIGERATION
& MECHANICAL SERVICES
BRENDAN GRIMES 0419 009 643
 brendan@emirgservices.com.au emirgservices.com.au

ARBORIST

MOUNTAIN TREES

NICK ROUTLEDGE
 0438 176 775
 Qualified Arborist
 mountaintrees@live.com.au
Professional Tree Services

AUTOMOTIVE REPAIRS

TAMBORINE MOUNTAIN
Auto Clinic
Jason Bowles

- Logbook Servicing All Makes Incl Euro
- Specialist in Brakes
- All Mechanical Repairs **RACQ**
- Small Electrical Repairs
- Sublet R.W.C & Air Conditioning

41 Main St Nth Tamborine Ph: 5545 1214

On The Road
 EST. 2002
AUTOMOTIVE REPAIRS

- Mobile Repairs, Logbooks & Servicing
- RWC Safety & LPG certificates
- Cars, Trucks, Trailers & Floats, Farm Eq't
- Light & Heavy Diesel Repairs
- COI & Measure Ups, Mod. Plates
- Scan Tool Diagnostics

FULLY EQUIPPED WORKSHOP AT TAMBORINE
SEAN 0409 291 053
 ACN 111 041 751

BLINDS & CURTAINS

**TAMBORINE BLINDS
 AND AWNINGS**
 ✓ Awnings ✓ Blinds
 ✓ Security & Flyscreens
 ✓ 25 Years Industry Experience
RICHARD m: 0405 631 655
KENT h: 5545 0057

BOOKKEEPING

Innovative
 BEAN COUNTING
 BAS and Bookkeeping Services
Focus on your business while we count your beans!
 XERO & MYOB Certified Advisor, QuickBooks, Receipt Bank & Hubdoc partnered. 20 Years of experience!
 E: info@ibcounting.com.au
 W: www.ibcounting.com.au
 P: 07 5543 4830
 M: 0400 395 805

 INSTITUTE OF PUBLIC ACCOUNTANTS

 BAS agent 25894697

 AUSTRALIAN BOOKKEEPERS NETWORK

 AUSTRALIAN BOOKKEEPERS ASSOCIATION

BRICKLAYING

HOPE
 BRICKLAYING
 Brick and Block Work • Cottage
 • Commercial Construction
 • Retaining Walls and Fences
 Tamborine Local
 QBCC Lic 1302284
0449 622 639
 Jhbricklaying@hotmail.com

BUILDERS

AGENCY UNO PTY LTD - Builder
 LIC # QBCC 1203987
 Custom homes, alterations,
 renovations, extensions and decks.
 Advise and quote.
Call: Simon
Mb: 0422 532 397

CRAMP BUILDERS
 Pty Ltd
 Architectural Homes Renovations Extensions Maintenance Commercial Works
 Nick Cramp - 0437 017 297
 Rick Cramp - 0407 701 875
 E: info@crampbuilders.com.au
 ACN 137 984 715 QBCC Lic. 1177904

**All Aspects Of
 Building & Renovations**
tbi
 TOTAL BUILDING IMPROVEMENTS

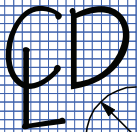
- RENOVATION SPECIALIST
- BATHROOMS
- KITCHENS
- FULL INTERNAL

Edward Odisho
 mob: 0418 788 029
 QBCC LIC - 15077381
 email: totalbuilding@gmail.com

DIETZEL HOMES
 Building & Renovations
Adrian Dietzel
 Builder
 0407764715
 QBCC LIC 1174335
 dietzelhomes@gmail.com
 www.dietzelhomes.com


BUSINESS DIRECTORY – WHO TO CALL

BUILDING DESIGN



CAMERON DESIGN LOGIC

Ian Cameron
0405 285 341
Adam Cameron
0414 807 265
camdunpl@gmail.com
QBCC 15189980

BUILDING DESIGN & PLAN DRAFTING 

CAR DETAILING

CAR DETAILING – MOBILE SERVICE

Ian Garvie
JP (Qual)



Qld Water Comm. & Commerce Qld
REGIST. WATER EFFICIENT OPERATOR No. 2238

0409 962 348
Health Regulations strictly adhered to

CARPENTRY

AGENCY UNO PTY LTD - Carpenter Builder
LIC # QBCC 1203987

Formwork, framing, fix outs, pitched roofs, staircases, decks, railings, custom hardwood bench tops, renovations.
Advise and quote.
Call: Simon
Mb: 0422 532 397

CHIMNEY CLEANING

SOOTY'S CHIMNEY CLEANING SERVICE
Dust-free cleaning - all areas



sootyschimney@optusnet.com.au
www.sootyschimneycleaning.com.au

0438 733 579

CLEANING

EAGLE HEIGHTS CLEANING SERVICES
Commercial Cleaning
House Cleaning ~ Weekly/fortnightly
Windows • Bond Cleans
Carpet Cleaning

MOBILE 0400 452 054
Cleaning the Mountain since 2001

Answers to TRIVIA from page 23

1. C
2. B
3. B
4. A
5. C
6. B
7. A
8. C
9. C
10. A

COMPUTERS



GRANT I.T. SERVICES



0410 559 136
CAMRON GRANT
grant.it.services@gmail.com

Professional & reliable
ON-SITE TECH SERVICE
for your home or business

PC, Apple or Smart Devices - Repairs - Installations - Upgrades - Networking - Virus Removal & More

LOCAL & SAME DAY RESPONSE



COMPUTEX SOLUTIONS PTY LTD

Onsite in your Home or Business - Installations - Repairs
Upgrades - Virus Removal - Networking - Backups & more
Supporting PCs / Macs / Tablets / Smartphones

call Drew Haldane **0414 014 054**

For all your computer needs

DENTAL PRACTICE

DENTURE CLINIC



Joe Russell
Registered Dental Prosthetist

OPEN
for all your denture requirements

www.tamborinedentures.com
5545 3128
Mon-Fri Every week (excl. holidays)
After-hours appointments available

Shop 10/17 Southport Ave
Tamborine Mountain

CONCRETE

NDC CONCRETE
TAMBORINE MOUNTAIN

Specialising in:
• Driveways
• Patios
• Shed Slabs
• Pool Surrounds
• Concrete Benchtops

QBCC lic. 15131788

NATHAN CUMBERS 0481 387 007

Next DEADLINE:
April 30, 2021

DRESSMAKING

JULIA SINGH
FASHION AND TEXTILE DESIGNER

- DRESSMAKING
- PATTERNMAKING
- WORKSHOPS
- ALTERATIONS

TAMBORINE MOUNTAIN
0467 398 872
HSINGH@WESTNET.COM.AU



DRIVING LESSONS

TAMBORINE DRIVING SCHOOL

0431 857 356

Nicola Durkan
Qualified Instructor



Pickup school, work, home

RED LINE 

TAMBORINE MTN DRIVING SCHOOL

Accredited Driving Instructor
Long time local resident

Suzuki Swift Automatic
Free keys2drive lesson

Phone Grant 0478 225 853
Member Aust Driver Training Association

EARTH MOVING

COLES earthworks 

Excavators
Bobcats
Trucks

- postholes • pads • trenching • tank holes
- clearing • burnoffs • landscaping

Specialising in:
DRIVEWAYS

Ph: 5545 1979



Making the earth move for you on Tamborine Mountain

EARTH MOVING

FREE QUOTE CALL 0413 941 172

30 YEARS' EXPERIENCE IN ALL ASPECTS OF EARTHMOVING



DANNY'S DIGGERS

Bobcat & Excavator Hire

GRAYS EARTHWORX

5 tonne Excavator, 10 m² Tipper
All Excavations, Postholes,
Rock Walls, Sand, Soil, Gravel
Reliable - Good Rates
PH: GRAY 0431 243 810

BUSINESS DIRECTORY – WHO TO CALL

ELECTRICAL

Bob's Services

Gary Hamblin
Licenced Electrician
25 Years Experience

0413 278 743

thezoo5@bigpond.com



Lic. No. 71041



TAMBORINE MOUNTAIN ELECTRICAL SERVICES

Competitive Pricing and
Guaranteed Work from your
local Master Electricians

Call Now 07 5545 7777

Servicing our customers for 45+ years

Licence No. 69488

Arctick AU3560



ALL YOUR ELECTRICAL NEEDS FOR
RESIDENTIAL & COMMERCIAL

~ COMPETITIVE PRICING ~
Electricians that provide fast, tidy,
professional service

- New builds
- Renovations
- Upgrades
- Air conditioning
Installations



Call us on 1300 153 726
admin@knightsselectrical.net.au

Knights Electrical Contracting (QLD) P/L * Licence No: 65556 (QLD)

FIVE STAR SECURITY & ELECTRICAL

Lic. No. 59907

ELECTRICAL CONTRACTORS

Domestic • Commercial • Repairs
• Renovations • Upgrades

Phone: 0418 715 380

SKS Electrical Pty Ltd

Lic No. 73960

Stuart Spalding

0413 435 708

skselectrical11@hotmail.com



Michael Ruttle

0422 882 719

Ruttle@interlectrics.com

Lic:100994

Electrical Installations
New & Renovation
Phone and Data
Fair Prices &
Professional Service
Local to the Mountain

ENGINEERS

ACS Engineers

CIVIL | ENVIRONMENTAL | PROJECT MANAGEMENT

07 5541 3500

Providing Professional Engineering &
Civil Design Services to the Scenic Rim

www.acsengineers.com.au

admin@acsengineers.com.au

FIREWOOD

TAMBORINE MT FIREWOOD SUPPLIES

* FREE DELIVERY

* SEASONED TIMBER

* PROMPT SERVICE

PH: 0418 980 862

Adam



Aged Western Red Ironbark

From \$180 m³

Phone Wayne Kiehne 0419 768 959

TD McNEILL QUALITY FIREWOOD

Split, Dry 100% Ironbark by the Tonne

18 Years in Business Locally

When Only the Best Quality will Do!

Phone Trent 0457 244 525

FITNESS & GYM

JOIN YOUR LOCAL GYM

ACCESS AVAILABLE 24/7

Personal Training & Classes

Follow Facebook@MainFitness

OR www.mainfitness.com.au

8/39 Main St North Tamborine

5545 4774

24/7

MAINFITNESS



TRIATHLON CLUB

16 BEACON ROAD,
TAMBORINE MOUNTAIN

24/7

Community Gym
for all levels of fitness

Contact Natasha
if you are interested
in joining.

Mobile: 0408 739 844

GARAGE DOORS & GATES

Adept Garage Doors & Gates



SPECIALISING IN:

Servicing, Repairs, Maintenance,
Installation, Automation & Remotes.
Quality Service, Workmanship & Products

24/7 Emergency Repairs

Ph: 0401 363 757

www.adeptgaragedoors.com.au



GAS SUPPLIES



CALL FOR AMAZING WINTER SPECIALS!

- No setup fee
- Friendly service
- Competitive prices
- Talk to a person
- Same or next day delivery



PH 3800 2080

PH 5548 7100

plusgas.com.au

Joyan Household Gas

YOUR FRIENDLY LOCAL SUPPLIER

We supply and deliver household gas cylinders
No Rental Charges No Lock In Contracts
No Delivery Fee



Call John 0424 486 986

HAIRDRESSING



Hair by Melissa

• LADIES • MENS • CHILDREN
• Cutting • Colouring • Styling

Complete In Home Hair Service
Stuck Indoors - I Come to You

0416 825 465

HANDYMAN



Can-Do Handyman Services Allan Pyne

Commercial – Domestic
Home & Building Services

EVERYTHING IS POSSIBLE

From termite damage to

welding repairs & fabrications

Need it done properly? Call ...

0403 067 771 allanspyne@gmail.com

Craig the Handyman

For any odd jobs you have wanted done

- Affordable • Reliable • Quality work
- 30 Years Experience

Not your average handyman!

0478 075 642



BUSINESS DIRECTORY – WHO TO CALL

HARDWARE

TAMBORINE VILLAGE TRADERS
 HARDWARE – PLUMBING – PRODUCE
 SADDLERY – GARDENING – PAINT
 M-F 7.30 to 5.30 Sat 7.30 to 3pm Sun 7.30 to 1pm

Ph: 07 5543 8822 Christina
 Fax: 07 5543 8866 5 Leach Road
 Email: christina@tamborinetraders.com Tamborine QLD 4270

LANDSCAPING & MOWING

Affinity Landscapes
*Is your garden ready for spring & summer entertaining?
 Would you like to attract wildlife?
 Do you want envious friends & neighbours?*

Local horticulturalist & lic'd structural landscaper

- Design • Water features • Stonework • Planting
- Paving & retaining walls
- Contemporary, native & formal gardens

MOB: 0411 805 589 – QBCC1115404

Dependable Mowing & Kanga Mini Loader Hire

We've Got Your Property Covered!
 Small & Large Acreage Mowing
 Zero Turn Catching/Mulching Mower
 4WD & 6WD Steep Slope Mowers/Slashers
 Lawns Maintenance – Aerating Dehatching
 Over Seeding, Fertilising, Spraying
 Back Yard Earthworks, Trenches,
 Soil & Mulch Shifting
 Post Holes, Landscaping

Phone/Text Ash Fully insured
0430 110 055

LANDSCAPE SUPPLIES
 NOW BIGGER, BETTER, CLOSER!
5545 3390
Dingo Hire with Attachments

Large blocks for retaining walls or heavy-duty control solutions
 bagged fertiliser * bagged mulches * crusher dust *
 drainage gravels * roadbase * decorative gravels * soils
 * mulches * concrete blend * rocks * sleepers * stepping
 stones * sands, barks * turf

P/U OR DELIVERY **PLUS MUCH MORE** Discount for 6m+ loads

85 Hartley Road, Nth Tamborine
TUESDAY – SATURDAY 9AM–3PM

TAMBORINE TURF
 (Est. 1966) Landscaper & Laying Service Available

Growers & Suppliers of:

- Wintergreen Couch • Buffalo Grass • Kikuyu Turf

Farm Pick Up or Delivered – Inspections Invited!
 (Weekend pickup must be ordered by noon Friday)
 tamborineturf.com.au • tjyore@optusnet.com.au

Tom 07 5543 6133 • Office 0423 924 692

LOCKSMITH

Paul's Locksmith Service

- ✓ Over 35 Years of Experience
- ✓ Master Locksmith Since 1989
- ✓ Prompt & Reliable Professional Service at Sensible Prices
- ✓ Scenic Rim Resident

Residential • Commercial
 7am - 7pm • 7 Days A Week

Call Paul 0439 355 411
 paulslocksmithservice.com.au

MOWING & GARDENING

GREENWOOD PROPERTY MAINTENANCE

- All lawns – small blocks to acreage
- Hedge trimming
- Brushcutting
- Rubbish removal
- Gutter cleaning etc

PHONE JOHN 0431 953 126

PAINTING

ALL SURFACE PAINTING P/L

- Re-paint Specialists
- Specialise in Timber Restoration
- New Projects Welcome

JOHN RYAN
M: 0414 377 474
 E: allsurfacepainting1@gmail.com

YOUR LOCAL INTERIOR & EXTERIOR PAINTER

THOBS PAINTING SERVICES
 Phone Thobs **0455 308 318**
 thobspaintingsservices@gmail.com
 OBLIGATION FREE QUOTE

Domestic
 Commercial
 Industrial
 Body Corp
 No Job Too Small

PAINTING

VINCENT'S PAINTING SERVICES

- Interior/Exterior Painting
- Roofs & Decks

QBCC 1090914
5545 0098 or 0409 879 184

Painting Contractors

RESIDENTIAL & COMMERCIAL
Gary 0438 175 069
 Email: garywferigo@hotmail.com
FREE QUOTES • PROMPT SERVICE

PAINTING

Lowrie Painters
 QBCC: 1024341
 Interior – Exterior
 Quality finish – Mountain Local

Call Matt for a competitive quote

0422 948 753

lowriepainters@gmail.com painter-goldcoast.com.au

CJR Queensland
 Painting and Maintenance Services

Colin Rose
 0414 818 318
 cjrose@bigpond.net.au

PANEL BEATER

ALLAN HAYES
 TAMBORINE MOUNTAIN
 PANEL & PAINT
PH: 5545 2319
Mob: 0419 735 874
 Private and insurance work
 Total Car Care

FREE QUOTES WINDSCREENS
 PICK UP BRAKES
 DELIVERY RUST FOR R.W.C.

1 HAYES RD
 OFF TAMBORINE OXFENFORD RD

PEST CONTROL

EDGE PEST CONTROL

- Termite inspections
- Termite treatments and
- General pest control services

QBCC Lic. 1215067 Danny
 Pest manag't lic. Pmt-0-11839
 25 years in the industry **0421 642 273**

EAST COAST building & pest

Your local, trusted, family owned and operated team

- Building and Pest Inspections
- Termite Inspections
- Termite Management
- Pest Control

1300 910 917

admin@eastcoastbuildingandpest.com.au
 www.eastcoastbuildingandpest.com.au

BUSINESS DIRECTORY – WHO TO CALL

PEST CONTROL

Safe Effective Treatment of ALL PESTS

Termite inspections using the latest technologies: Thermal Image Camera, Termatrac etc., and all aspects of Termite prevention and eradication.



END-A-PEST

Exterminators

Over 30 Years' Exp.

Fully Licenced & Insured QBCC 15023710

5545 3957 or 0407 590 790

PHYSIOTHERAPY

Physiotherapy Tamborine Mountain
& Sports Injury Clinic

Gary Brooks

tel: 07 5545 0500

16-18 Main Western Rd, Tamborine Mountain

PHYSIQUE

PHYSIOTHERAPY



2/10 Main Street, PO Box 102
North Tamborine, QLD 4272

5545 1133

www.physiquehealth.com.au

PICTURE FRAMING & PRINTING

vikingframer.com



Viking Framer

Picture Framing • Art Gallery • Printing
vikingframer.com

(07) 5545 2402 0449 250 545

PLASTERING

Gyprock, ornate & suspended ceilings,
fancy cornices, ceiling roses.

All Aspects of Trade

Phone **BRETT CLEARY**

5545 0115

PLUMBING

ALL-WAYS PLUMBING Lic No 745184

Specialising in:-

- Maintenance
- Plumbing
- Roofing
- Draining
- Gasfitting

Ph: Dave Angel at Nth Tamborine
Ph: 5545 2369 all hours
Mobile No: 0419 677 008

COBRA PLUMBING
& Drain Clearing P/L QBCC 73572

Maintenance Services

Renovations • No Job Too Small

Mark: 0419 655 802 Local Resident

PLUMBING

Hot Water Install & Repairs Solar, Electric & Gas.

Trust the family owned local
Best service & price!

Ph: 5539 6820



TODD'S
PLUMBING
& ELECTRICAL

www.toddsplumbing.com.au

PLUMBER • Leak Detection
GASFITTER DRAINER • Blocked Drains
Tamborine Mountain Local • Renovations
• CCTV Drain Camera

Call Matt
ADEPT 0425 706 949
PLUMBING & GAS QBCC: 1166432

Master Plumbers' Association of Queensland

VISA MASTERCARD

PUMPS



For sales, service & advice
you can trust ...

House | Filtration | Irrigation | Bore

PHONE 5545 0555 and 5545 4100

We supply & repair PUMPS

- Bore pumps • House Pumps
 - Pool Pumps • Grey-water Pumps
- IRRIGATION & WATER SPECIALISTS

Sales & service

38 Main St, Nth Tamborine
(2 doors from POST OFFICE)

REAL ESTATE

Professionals Serendipity Real Estate



Elizabeth Stirling
0400 449 978

elizabeth.stirling@professionals.com.au

5545 5000 10-12 Main Street, Tamborine Mountain
www.ProfessionalsTamborineMountain.com.au

Professionals Serendipity Real Estate



Team Erin & Monique
0427 078 757 0429 004 840

erin.mcgee@professionals.com.au
monique.clemens@professionals.com.au
5543 6444 2205 Beaudesert-Beenleigh Rd, Tamborine
www.ProfessionalsTamborine.com.au

REAL ESTATE

Professionals Serendipity Real Estate



Team Paul, Heleen & Ton
0419 249 271 0424 591 012
0424 591 011

5545 5000, 10-12 Main St, Tamborine Mountain
www.ProfessionalsTamborineMountain.com.au

Professionals Serendipity Real Estate



Linda Hogan
0414 300 558

linda.hogan@professionals.com.au

5545 5000 10-12 Main Street, Tamborine Mountain
5543 6444 2205 Beaudesert-Beenleigh Rd, Tamborine

Professionals Serendipity Real Estate



Diane Pihl
0424 653 316

diane.pihl@professionals.com.au

5545 5000 10-12 Main Street, Tamborine Mountain
www.ProfessionalsTamborineMountain.com.au

Professionals Serendipity Real Estate

SARAH AMY KYLIE



0429 001 013 0474 315 000 0428 654 000
Sarah Lewis Amy Orr Kylie Edwards

10 - 12 Main Street, Tamborine Mountain, 4272
www.ProfessionalsTamborineMountain.com.au

2205 Beaudesert-Beenleigh Road, Tamborine, 4270
www.ProfessionalsTamborine.com.au

07 5545 4000 Mountain Office 07 5543 6444 Tamborine Office

Property Management
The best team to manage your investment

BUSINESS DIRECTORY – WHO TO CALL

REAL ESTATE

 Professionals Serendipity Real Estate



Team Deb & Mark

0409 210 362 0407 292 036

mark.inwood@professionals.com.au

5543 6444 2205 Beaudesert-Beenleigh Rd, Tamborine
www.ProfessionalsSerendipityRealEstate.com.au

 Professionals Serendipity Real Estate



Oliver Edwards

0422 500 613

oliver.edwards@professionals.com.au

5545 5000 10-12 Main Street, Tamborine Mountain
www.ProfessionalsSerendipityRealEstate.com.au

 Professionals Serendipity Real Estate



Michael Kratzke

0434 718 162

michael.kratzke@professionals.com.au

5545 5000 10-12 Main Street, Tamborine Mountain
www.ProfessionalsSerendipityRealEstate.com.au

Cherie Todd
0411 466 442



RayWhite

Shop 6,
9-13 Main Western Rd
North Tamborine
07 5545 1303

cherie.todd@raywhite.com
www.raywhiteruraltamborinemountain.com.au

REAL ESTATE

Louis Bartle
0491 642 980



RayWhite

Shop 6,
9-13 Main Western Rd
North Tamborine
07 5545 1303

louis.bartle@raywhite.com
www.raywhiteruraltamborinemountain.com.au

 EXCLUSIVE SALE PROPERTIES



Thinking of
selling?
call me
Now

KONRAD GALLAHER
0435 99 66 44

LOCAL Independent Agent

TESTIMONIALS

We are extremely grateful for his excellent work and are more than happy to strongly recommend Konrad, Lewis and Liz.

Many thanks Konrad for not only being our agent, but also for becoming a kind friend, Paul and Joy.

30 + YEARS LOCAL RESIDENT
30 + YEARS SALES EXPERIENCE

konrad@exclusivesale.com.au
exclusivesale.com.au

Harcourts Scenic

Scenic Rim Real Estate

scenic.harcourts.com.au
tamborine@harcourts.com.au

07 5543 8525

It is about people,
it is all about you.

REMOVALS/HAULAGE

Local Country Vic Palmer Interstate Pre-packing

BEENLEIGH REMOVALS

Incorporating Tamborine Mtn Removals
Ph: 07 3287 4326
Mobile 0408 743 244

Next DEADLINE:
April 30, 2021

ROOFING

Martin Foster QBCC 57756

Leak Specialists
FOSTERS ROOFING & GUTTERING

Your local Tamborine roofer. Over 35 Years' Exp.
Roofing, Guttering, Leaf Guard, Whirlybirds
Leaks and Maintenance
Ph 0417 748 073 Office 5543 8310
fostersroofingptylt@bigpond.com

AGENCY UNO PTY LTD - Builder
LIC # QBCC 1203987

Repairs and replacement of roof, gutter, downpipes and timber work.
Advise and quote.

Call: Simon
Mb: 0422 532 397

SEPTIC TANK CLEANING

Septic Solutions QLD
Locally Owned & Operated

Pumping & Cleaning of
Septic, Sullage and Holding Tanks
Grease Traps & Sewerage Treatment Plants

PH: Tony 0439 430 242
After hrs: 07 5543 0242

POWER PUMPING
DOMESTIC SERVICES

Treatment Plants Septic Tanks
Sullage Tank Grease Traps
Servicing & Repairs

T 55452692 M 0408633260
www.yoursepticssystem.com.au

SIGNWRITING & AUTO ART

Auto Signs Mountain Resident

SHOPFRONTS
CAR, TRUCK, BOAT WRAPPING
VEHICLE SIGNS
LIGHTBOXES
BANNERS
A-FRAMES
DIGITAL PRINTING
BUSINESS CARDS
FLYERS etc
DESIGN

Call Chris
0410 058 204
autoartsigns@bigpond.com
GOLD COAST - MT TAMBORINE - CANUNGRA - BEAUDESERT

Tamborine Mountain

Signs

- Shops
- Vehicles
- A - Frames

Over 20 Yrs Exp. Free Quotes & Proofs
Call Warwick 0421 363 567
warwickpage@bigpond.com

SKIP HIRE

TAMBORINE SKIPS

2-12m³ (cubed) bins available, domestic or commercial

Book online or phone: 0421 507 303
admin@tamborineskips.com.au | www.tamborineskips.com.au
Locally owned and operated

Next EDITION:
May 6, 2021

BUSINESS DIRECTORY – WHO TO CALL

STORAGE

ALL TAMBORINE STORAGE

108 MAIN WESTERN ROAD
TAMBORINE MOUNTAIN
PHONE 0417 001 536

SWIMMING POOL SERVICE



PHONE 5545 1126

- Sales, Service and Installation of Pumps, Filtration, Heaters & Cleaners.
 - One off and regular Pool & Spa servicing
 - Pool Chemicals
 - Small Motors and Machinery Servicing
- Monday – Friday 8:30am to 4:30pm Saturday – 8am to 1pm
Closed Sunday & Public Holidays
Shop 2/24 Main St, Nth Tamborine

TELEVISION

JUSTRITE VIDEO SERVICE

SPECIALIST ANTENNA INSTALLATIONS
SATELLITE TV AND DIGITAL RADIO
HOME THEATRE • EQUIPMENT SETUP
WI-FI • TV, PHONE & DATA POINTS

32 Years Experience **Bruce Howsan** Lic No 71342
Ph: **5543 8374** Mb: **0438 761 595**

TILING

Tiling

QBCC LIC. 69815

Adam Sander
0417 616 307

Wall & Floor Tiler

Servicing the Scenic Rim for 10 years

- New & Renovation Work
- Wet Areas & Waterproofing

Peter Himberg 0412 263 556



QBCC 15009741

TREE SERVICES

Batchelor & Sons

LAND CLEARING
STUMP REMOVAL & EXCAVATION

- 24/7 Tree Arborists
- 28+ Years of Experience
- We Care for Your Trees

Call Us **0419 686 908**

Let's talk about your tree care needs!

TREE SERVICES

Tamborine Mtn

Affordable



Tree Service
0418 980 862

Removal & Trimming
Chipping & Stump Grinding
ADAM ROUTLEDGE

TYRES



- AGRICULTURAL
- TRACTOR
- TRUCK
- NEW WHEELS
- TYRE REPAIRS
- FREE TYRE SAFETY CHECK
- FREE AIR IN YOUR TYRES
- WHEELBARROW
- RIDE-ON
- ATV & QUAD
- WHEEL ALIGNMENT
- TUBES

tamborinemountaintyres.com.au

VET SURGERY

Tamborine Mtn
24 Main Street
North Tamborine
5545 2422
all hours
Mon-Fri 8am-6pm. Saturday 8am-1pm
After Hours Emergency Service Available

Canungra
Cnr Pine Road & Franklin Street
5543 5622
all hours
Mon-Fri 8.30am-5.30pm. Sat 8.30-11.30am
After Hours Emergency Service Available

Yarrabilba
Cnr Wongawallan Dr & Adler Circuit
3180 3096
all hours
Mon-Sat 8am-6pm. Sunday 9am-12noon
After Hours Emergency Service Available

BALANCE VET
• Housecalls
• Conventional Medicine
• Physical Rehab
• Acupuncture
• Chiropractic
0431 263 728

WATER SUPPLIES

PONY EXPRESS
MOUNTAIN WATER
Est 1985 - Maurice & Debbie
Friendly, Reliable Delivery
\$190 per load
BSC Approved
7 DAYS A WEEK
Ph: 5545 3935 or 0417 644 498

Mountain Water Supply
Quality Mountain Water
100% UV Filtered
Lic. approved by SRRC
Also Gravels, Sands, Soils
Roadbase Tipper Hire
Michael & Odette Johanson
Ph **5545 2225**
0407 718 203

WATER TANK CLEANING & REPAIRS

The H2O Tank Doctor
THE H₂O TANK DOCTOR
Lauchlan McConnell
QBSA 062446 (Est. 1988)
www.theh2otankdoctor.com.au
• Water Tank Cleaning & Repairs
• Minimum water loss cleaning systems
• Water filtration solution "Roof to Tap"
Servicing all areas • Free quotes & advice most areas
Ph **5545 3693** or **0407 649 659**

WEDDING VIDEO SERVICES

Brisbane-based Videography, specialising in wedding films that capture the natural love & laughter of your day! Also servicing Sunshine Coast & Gold Coast regions.
T&C's may apply
www.facebook.com/aleishagracefilmandphoto/
vimeo.com/aleishagracefilmandphoto

WELLNESS AND HEALTH

Sally Glenister
REFLEXOLOGIST
21 years' experience
0438 735 908
www.sallyglenister.com

Advertising?

0417 238 238

Call or email

advertising@scenicnews.com.au



*Happy
Mother's Day*

Colour-in and drop off at Professionals Serendipity before Saturday 8th May to win a present for Mum

name: _____ email: _____ mobile: _____

07 5543 6444

ProfessionalsTamborine.com.au

2205 Beaudesert-Beenleigh Rd, Tamborine 4270

07 5545 5000

ProfessionalsTamborineMountain.com.au

10 - 12 Main Street, North Tamborine 4272



firehaus

Offering some of the world's most premium brands.
 Contact us on **1800 200 240** or visit our showroom located at
10 Shettleston Street, Rocklea QLD



KALORA 425R
 Radiant wood heater
 Up to 140m2 heating

RRP \$1,518
\$1,099
 Free Flue Kit



KALORA 500 WOODSTACK
 Up to 200m2 heating
 Overnight burn times
 Convenient wood storage

RRP \$2,218
\$1,829
 Free Flue Kit

FREE START-UP KIT

Available with any purchase
 Includes kindling, firelighters
 & 20kg woodstack



KEMLAN XL
 Up to 360m2 heating
 Large viewing area
 3 Speed fan

RRP \$3,863
\$2,999
 Free Flue Kit



KALORA 500
 Up to 200m2 heating
 Overnight burn times
 Classical design

RRP \$2,068
\$1,749
 Free Flue Kit



**KEMLAN TEMPO
 3 LEGS**
 Up to 180m2 heating
 Pedestal or leg base
 Cooktop surface

RRP \$2,105
\$1,549
 Free Flue Kit

woodfires | gas fires | electric | bioethanol | accessories