



Scenic

# News

Tamborine Mountain, Canungra, Tamborine, Beechmont, Beaudesert, Cedar Creek, Boyland

**Celebrating 62 years  
of unbroken publication...**  
[www.scenicnews.com.au](http://www.scenicnews.com.au)

## JOHN VANCE MEMORIAL DAY AT CLUB TAMBORINE



*The inaugural John Vance Memorial Day was held at Club Tamborine to honour the man who was a member of the Club for 22 years, was president of both Blind Bowlers Queensland and Australian Blind Bowlers Association, and who worked tirelessly to help raise funds for Queensland Guide Dogs. Friends and supporters of the late Dr Vance celebrated his life with a morning tea and participation in several games of mixed fours. Story Page 3.*

### Canungra Dental

Twilight  
Sedation  
Available

**NEED TO SEE THE DENTIST?**

Dependable. Affordable. Comfortable.

**New Patients Welcome**  
**(07) 5543 5299**





# MOVE TO THE GOLD COAST THE CASE FOR AND AGAINST

**It was an election promise that I made that Tamborine Mountain would get the opportunity to express its views and vote on moving into the Gold Coast City Council local government area. Over the last 12 months I have listened to what locals are saying. I represent all mountain residents and you know my personal views. I have always said I will abide by the result of any quantitative process to determine the will of the majority.**

My election win was substantive on preferences, but the primary vote was split four ways. This process that we are embarking on, and starts with the case FOR AND AGAINST, is the beginning of the lead up to a **household plebiscite**. Voluntary experts have been involved in planning for this vote, and will be certifying the process to ensure probity and statistical accuracy.

After the case 'for and against' is concluded, more information will be announced.

## The case for:

- 1. SCENIC RIM REGIONAL COUNCIL RATES EXCESSIVELY HIGH.** Gold Coast has exceptionally low uniform residential rates and separate charges which would mean slashing Tamborine Mountain's rates to affordable levels - as much as up to 50%. The average General Rate and Separate Charge Infrastructure ranks fifth highest of any community in Queensland according to the State's comparative statistics. Our rate contribution does not reflect our share of capital expenditure over the last 13 years of Scenic Rim Regional Council, and our amenity and liveability are on a declining trajectory. It is a structural problem with no solution.
- 2. NO OVERDEVELOPMENT POSSIBLE WITH GCCC AND THE STATE'S REGIONAL PLAN AND GROWTH STRATEGIES.**  
There is no reason for the GCCC to overdevelop Tamborine Mountain. You only have to look at Guanaba, Springbrook, the Mudgeeraba Valley, Currumbin Valley, Numinbah Valley, Mt Nathan, Lower Beechmont and Advancetown to name a few rural areas in GCCC where there are no high rises, and the rural vista has been protected. Even if GCCC wanted to overdevelop Tamborine Mountain, this would be against the State's SEQ Regional Plan and impossible to achieve. The State would not allow it and with no reticulated water and sewerage it is a fanciful and emotive argument with little substance. Why would it not have done so in those other areas already? The truth is that 95% of high rise is built one block back from the coastline. The single high rise closest to Tamborine Mountain is at Royal Pines Golf Course east of Carrara.
- 3. \$1.7 BILLION BUDGET.** Gold Coast has a \$1.7 billion operating budget and \$575 million annual capital budget. Scenic Rim Council lacks financial capacity (approximately \$80 million budget) and the willingness to invest and renew Tamborine Mountain's infrastructure to a high standard. Yet Tamborine Mountain with 8100 people is the largest population centre in the region, compared to Beaudesert with a population of 6500. Scenic Rim Council has announced upward of \$35 million of capital works in the town of Beaudesert this year so far and this again is where the bulk of money is being spent, and potentially more is yet to be announced.
- 4. COMMUNITY OF INTEREST WITH GCCC.** Tamborine Mountain's community of Interest is not with Beaudesert; it is with Gold Coast because we travel for hospitals, shopping, recreation, beaches, higher education, swimming, sport, and service trades etc. This is one of the key criteria the State will consider in determining whether we go to Gold Coast City Council or not. The GCCC recognises this. This was the reason the locality of Karana Downs, formerly of Ipswich, moved to the Brisbane City Council local government area.
- 5. REGULAR BUS SERVICES TO GCCC.** Gold Coast City Council can integrate Tamborine Mountain into its transport network. Regular bus services to Helensvale and beyond would end the social isolation of those who do not have access to cars, including the young and elderly.

*(To be continued)*

**I trust this is all food for thought. Could we do much better for much less in GCCC?**



Should you wish to discuss anything with me the following are my contact details:

Mobile: 0401 306 659

Email: [swanyusa@gmail.com](mailto:swanyusa@gmail.com)

These are my own personal views & I do not puport to speak on behalf of Council. Decisions of Council are made only by majority vote.



# JOHN VANCE MEMORIAL DAY

The inaugural John Vance Memorial Day at Club Tamborine was cancelled in 2020 due to the coronavirus pandemic and narrowly missed being cancelled again this year because of the most recent lockdown in Brisbane.

However, on March 28, the late Dr Vance was finally honoured at the delayed event that was created in his memory and to help raise funds for Queensland Guide Dogs.

Dr Vance and his wife Dawn moved to Tamborine Mountain in 1996 just prior to his retiring because of his sight issues. It was also at this time that he joined the Tamborine Mountain Bowls Club, as he was already playing with Blind Bowlers.

Dr Vance was the president of Blind Bowlers Queensland and then became the president of Australian Blind Bowlers Association, taking the team to England in 2013 for a 10-nation competition in which Australia came second. It was clear that he touched many lives both in the bowling community and in the Tamborine Mountain local community with his kindness, generosity, and determination to leave behind a legacy.

He was an active member of Club Tamborine for 22 years. Barry Chatel was John's bowling director for two-and-a-half years and in that time, he competed in two national championships with him as well as numerous other events.

John was an active member of the Guide Dogs community for 23 years and an incredible advocate for the blind and low vision community. He was elected as a Guide Dogs Board Director in August 2008 and was also the Chair of the Client Services Liaison Committee and a member of the Volunteer Peer Support Program. He passionately advocated on issues such as disability parking access for Queenslanders and accessibility issues on the Queensland Rail network.

He also assisted in the training of staff to ensure they could best help people with low or no vision. He was recognised for his enormous ongoing contribution by being awarded an Order of Australia Medal (OAM) in 2014 for services to the blind and vision impaired.

In November 2011, John was matched with Guide Dog *Vogue* who became his steadfast and loyal companion. The CEO of Queensland Guide Dogs who attended the Memorial Day, delighted everyone by bringing along the wonderful *Vogue*. In a touching moment, *Vogue* made a direct path towards Mrs Vance, something that brought tears to most of the onlookers.



*Mrs Dawn Vance and Dr John Vance's faithful guide dog Vogue*

The following sponsors donated prizes for the day: Club Tamborine, Mt Tamborine Vineyard and Winery, SParms, Lawn Bowls Sunscreen – Sunblessed Sunscreen, Queensland Guide Dogs, Thoroughbred Fix and Lance Cordingley Lawyers.

## BACK TO SCHOOL!

Kick start their year with confidence.

BOOK A COMPREHENSIVE EYE TEST TODAY!



Scenic Rim Optometrists  
Beaudesert Medical Centre  
47 William St, Beaudesert QLD  
Phone: 5541 9510  
scenicrimoptometrists.com



Daniel Tune



Katie Henderson



Mark Smith



Your locally owned award-winning optometrists.

Locals caring for locals





## WE OFFER:

- Weekly community newspaper
- 7100 distributed - to home letterboxes, and to local businesses
- Get your ad in front of more than 20,000 readers each week
- Free online exposure, and online advertising opportunities
- Modern website - great visibility for you
- Social media coverage included with your advertising  
**#scenicnews + facebook.com/scenicnews**
- Tall A4 size - standout exposure
- High quality gloss print
- 62 years of unbroken publication!
- We cover Tamborine Mountain, Canungra, Tamborine, Cedar Creek & surrounds - bulk drops in Beaudesert

**Looking to advertise - reach a bigger audience - have a story to tell?**

**Call today**

**0417 238 238 or**

**advertising@scenicnews.com.au**

**www.scenicnews.com.au/rates**

**Editor: Gary Stubbs**

**0431 722 177**

**editor@scenicnews.com.au**

**Production: Andrew Nagy**

**0432 827 537**

**info@scenicnews.com.au**

**Advertising?  
0417 238 238**

**Call or email**

**advertising@scenicnews.com.au**

# ENCORE FOR MONIQUE'S LIFE DRAWING EVENING



**Following the sell-out inaugural life drawing evening conducted by Tamborine Mountain artist Monique Quarantini at the Centre for Regenerative Arts, a second event has now been arranged to cater for growing local enthusiasm and interest.**

Monique was delighted with the response of all those who attended the March 17 evening - a mix of established and novice artists who came together and enjoyed an inspiring time of fun and high energy.

By providing tips and techniques along with individual tuition, Monique was able to help them find new ways of viewing the live model and their own work. With the model changing positions often and demonstrating short and long poses, participants were inspired to try new things, to push the boundaries and practise new techniques.

"It was wonderful to see people moving around the room and trying out different perspectives to bring their creativity to life," said Monique.

Everyone loved the atmosphere of connecting, sharing their work and ideas, and observing the works created by others. The opportunity to have a coffee, glass of wine and some food made for a social as well as an educational evening.

Monique and the team from Making Good Alliance transformed the Centre for Regenerative Arts into an intimate, relaxed and cosy space for those attending to explore their own self-expression. Monique's beautiful pottery, her personal drawings, the arrangement of beautiful lighting and candles, lamp shades created by Sandy Baillie, and music added to the ambience. Even the rain couldn't dampen the mood.

Overall, it was a very special evening. If you would like to explore your creativity, are an established artist or just want to have some fun, book now for the next event on April 21. For more information and how to book, visit **www.makinggoodalliance.com.au/mga-events** or phone 0438 152 976.



Manufactured in Brisbane by Mr Stoves  
**FACTORY DIRECT at WHOLESALE PRICES**



Proudly installing on Tamborine Mountain  
and surrounds for 30 years



# ONLY \$1695

Includes  
3.6m Flue Kit  
worth  
**\$440**



**Vogue  
Sierra**

## VOGUE HEATING

We can quote, supply and install  
all of our products

# 3375 1464

8 Machinery St, Darra  
[www.mrstoves.com.au](http://www.mrstoves.com.au)

### ALSO OPEN SATURDAY

Open Mon to Fri 8am - 5pm

Sat 8am - Noon

**FAMILY OWNED AND OPERATED**





Here is something to smile about:  
Mention this ad, and your check-up,  
clean and x-rays procedure  
is only \$200 (limited time only).

Tamborine Mountain Shopping Square  
17-27 Main Western Road, North Tamborine  
ehdcreception@eagleheightsdental.com.au  
www.eagleheightsdental.com.au

# A safer ride starts with you



Your behaviour on the road has direct consequences on your life and those around you.

Rider safety is everyone's responsibility, but that starts with you.

### Before you ride

- Choose the right bike for your skill level
- Refresh your skills by practicing emergency stops and manoeuvres
- Check the condition of your bike including tyre pressure
- Invest in high quality safety gear
- Make sure you're rested and in the right head space
- Don't ride affected by alcohol, drugs or medication
- Ensure pillion passengers know what to do.

### While you're riding

- Talk yourself through corners and challenging parts of the road
- Look where you want to be so you don't lose your line
- Obey road rules and avoid risk taking behaviour
- Stay out of other motorists' blind spots
- Don't try to keep up with others. Trust your gut and back off
- Look out for your fellow riders.



**A safe ride is a good ride.**

QUEENSLAND POLICE SERVICE



# Council Notices



## HELP US PLAN FOR THE FUTURE

Be part of planning for the future of the region through the first Scenic Rim Growth Management Strategy.

Visit Council's Have Your Say web page to find out more about the growth management strategy and complete the survey online.

[scenicrim.qld.gov.au/have-your-say](http://scenicrim.qld.gov.au/have-your-say)

## COMMUNITY DISASTER VOLUNTEERS NEEDED

Council is calling for Community Disaster Volunteers to fill new roles to improve on-the-ground communications and local leadership before, during and after a disaster event.

Applications close mid-May 2021. Download a Fact Sheet and Volunteer Application Form from Council's website [scenicrim.qld.gov.au](http://scenicrim.qld.gov.au)

## VIRTUAL REALITY EXPERIENCE

To celebrate Youth Week, Scenic Rim kids can enjoy a free half-hour virtual reality experience.

**Tamborine Mountain** | Wed 7 April 9am - 1pm  
**Boonah Cultural Centre** | Tues 13 April 9am - 1pm  
**The Centre Beaudesert** | Wed 14 April 9am - 1pm

Places are limited, so bookings are essential. Visit [www.whatsonscenicrim.com](http://www.whatsonscenicrim.com)



## LIBRARIES

For more information visit [scenicrim.qld.gov.au/libraries](http://scenicrim.qld.gov.au/libraries)

### SCHOOL HOLIDAY ACTIVITIES NAME THE GAME

A morning of quick thinking and hilarious games. Book through the Library catalogue Events page on Council's website.

**Boonah** | Monday 12 April | 10am - 11am  
**Beaudesert** | Thursday 14 April | 10am - 11am

### METAMORPHOSIS ACTIVITY PACKS

Scenic Rim Libraries are celebrating the change of seasons through poetry and art. The Metamorphosis Kit includes Haiku instructions, origami paper and material for children aged 8+ to create a collage.

### STORYTIME IN THE PARK OUTREACH

**CANUNGRA** 14 April  
**RATHDOWNEY** 19 April  
**BEAUDESERT** 20 April  
**TAMBORINE VILLAGE** 27 April

### STORYTIME SESSIONS

Bookings are essential. Space and number limits apply.  
**BEAUDESERT** Monday 9.30am | Wednesday 9.30am  
**BOONAH** Monday 9.30am | 10.30am  
**TAMBORINE MOUNTAIN**  
Monday 9.15am | Storytime for children 2-5 yrs  
Friday 9.15am | Baby Rhyme Time 2 yrs and under

### QUEENSLAND MUSEUM KITS

Suitable for home-schooled students, educators and families, these kits are available for loan from local libraries. Contact your local library for information.

## LIVE + ONLINE AT THE CENTRES

For more information or bookings phone 5540 5050 or [liveatthecentre.com.au](http://liveatthecentre.com.au)

### LIVE ON STAGE

#### AM CONCERT

**Tickets** Adults \$16; Groups of 10+ \$12.50 p/p

#### DARREN COGGAN'S CAMPFIRE

**Friday 30 April** | 11am | The Centre Beaudesert

#### PM CONCERTS

**Tickets** Adults \$34; Conc \$29; Groups of 8+ \$29 p/p

#### CHAMELEON

**Friday 23 April** | 7.30pm  
Vonda Youngman Community Centre

#### A TASTE OF IRELAND

**Tuesday 4 May** | 7pm | Boonah Cultural Centre  
**Tickets** \$44.90 - \$89.90. Groups of 10+ \$49.90 pp

### ON EXHIBITION

#### ARTISTS' JOURNEYS

**6 April - 21 May** | The Centre Beaudesert

#### Exhibition Opening:

**Saturday 10 April** | 10.30am | Bookings essential

Gallery hours: Tues-Fri 10am - 4pm | Sat 10am - 2pm

### FRIDAY FLICKS

Boonah Cultural Centre

**Tickets** \$10 or Conc \$7.50 Pre-purchased essential  
**Friday 23 April** Hope Gap (M) | 10am | 1pm | 7pm

### ARTS DINNER - LIVE AND ONLINE

Celebrating Arts Outside - Streamed online  
**Tuesday 20 April** | 6.30pm

Enquiries phone 5540 5050 or register at [www.artsdinners.com](http://www.artsdinners.com)

## SCHOOL HOLIDAY ACTIVITIES

### BACK TO BASICS COOKING CLASS WITH SAM

**Wednesday 7 April** | Boonah Cultural Centre  
**Friday 9 April** | The Centre Beaudesert  
**Monday 12 April** | Vonda Youngman Centre

### MAKING MONSTERS POTTERY WORKSHOP WITH NICCI

**Thursday 8 April**  
The Centre Beaudesert | Vonda Youngman Centre  
**Thursday 15 April** | Boonah Cultural Centre

### LIGHTS! CAMERA! ACTION!

### GOAT TRACK THEATRE WORKSHOP

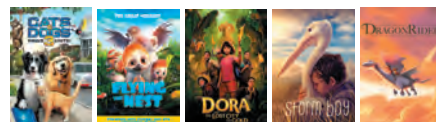
**Wednesday 14 April** | Vonda Youngman Centre

### KIDS FLICKS

Boonah Cultural Centre | The Centre Beaudesert  
**6 - 16 April** | 10am | 1pm

- Cats & Dogs 3: Paws Unite (G)
- Flying The Nest (G)
- Dora & The Lost City Of Gold (PG)
- Storm Boy (PG)
- Dragon Rider (PG)

Check the website [liveatthecentre.com.au](http://liveatthecentre.com.au) for session times.







Property of the week

**SALE** 🛏️ - 🛁 - 🚗 - 🏠 1.6 ha

**Magnificent 4-acre homesite \$1,000,000 +**

**39-45 Power Parade, Tamborine Mountain**

- Positioned amongst prestige homes in a Jacaranda lined street
- Two-road frontage, this wide parcel of land has a gentle slope
- Fruit trees and mature avocado
- Large shed to store machinery

**AGENTS:**

Paul Edwards 0419 249 271  
Barry Chick 0418 876 191



Property of the week

**SALE** 🛏️ 3 🛁 2 🚗 2 🏠 2,474m<sup>2</sup>

**Unique Mountain hideaway \$789,000**

**10 Platt Place, Tamborine Mountain**

- Private and quiet with no visible neighbours - pure serenity
- Large undercover deck, combined kitchen living area
- Brush-box timber flooring throughout
- Mature fruit trees, lockup storage, fully fenced

**AGENTS:**

Linda Hogan  
0414 300 558



**PROPERTY MANAGEMENT**

**Short and long term rentals**

Looking for the BEST management team to manage your investment?

You'll be in great hands all year round!

We would love to help you

Call us...

Mountain 5545 4000/ Tamborine 5543 6444

**OPEN HOMES Sat 10<sup>th</sup>**

- 10 - 10.30 69 Herriman Crt, Tamborine
- 10 - 10.30 1-7 King Parrot Cl, Boyland
- 11.30 - 12 10 Platt Place

**Sun 11<sup>th</sup>**

- 12 - 12.45 28 Central Avenue



**Review Buyer: 7 Morell Street**

Elizabeth was professional & friendly right from the moment we met her at an open home. We got chatting & after expressing the type of home we were looking for, Elizabeth was able to recommend a home for us to view, which ended up being the house we have since bought.

**AGENTS:** ★★★★★

Elizabeth Stirling  
0400 449 978



**SALE** 🛏️ 4 🛁 3 🚗 1 🏠 1,091m<sup>2</sup>

**28 Central Avenue, Tamborine**

- Queenslander style home with modern living
- Spacious lounge and dining areas
- Timber decks for alfresco dining
- Swimming pool & spa, great bore
- Garden shed plus fitted out studio

**\$975,000 +**

**AGENTS:**

Elizabeth Stirling  
0400 449 978



**SALE** 🛏️ - 🛁 - 🚗 - 🏠 16 acres

**905b Main Western Rd, Tamborine Mtn**

- This spectacular sunset could be yours
- Gated community, geo reports & DA approvals available for B&B
- Make this a lifestyle choice & build your dream B&B or home

**\$890,000+**

**AGENTS:**

Diane Pihl  
0424 653 316



**SALE** 🛏️ 5 🛁 3 🚗 6 🏠 3.95 acre

**1-7 King Parrot Close, Boyland**

- Great layout, lots of light and room to move
- In-ground pool & spa plus paddock with dam
- Large covered entertainment area
- Fully fenced post & rail
- Workshop & shed, great place to raise the kids

**\$899,000 +**

**AGENTS:**

Monique Clemens 0429 004 840  
Erin McGee 0427 078 757







**RENTAL** 2 1 1

**72b Bateke Road, Tamborine Mountain**

- Modern kitchen
- Open plan living/dining areas
- 2 bedrooms with built-in robes
- Separate laundry
- Single car space in shared garage
- Lovely gardens
- Sorry no pets - Available April 20th

**\$ 375.00 per week**

**AGENTS:**

Kylie Edwards 0428 654 000  
Amy Orr 0474 315 000



**SOLD** 5 3 4 4.94 acres

**1-13 Verbena Road, Tamborine**

Room to roam  
Congratulations Rowan and Jessica. We are so happy for you. It has been a big move but now you own a property where you can have your horse, and the equine facilities to enjoy. Let the fun begin as you swap the city aroma for the country fresh air

Interested in a current market report & value of your property? Call for a complimentary one!

**AGENTS:**

Mark Inwood 0407 292 036  
Debra Opie 0409 210 362



**QLD's rental crisis**

Rental vacancy rates are at record lows across Brisbane, the Gold Coast and the Sunshine Coast. Houses to rent are most scarce in lifestyle destinations on the Gold and Sunshine coasts and affordable suburbs around Brisbane's east and north.

Suburbtrends.com director Kent Lardner said the drop in vacancy rates in many parts of southeast Queensland was astounding. "We've got a rental crisis," Mr Lardner said. "Many of these regions have no vacancy rates — zero.

He said areas where vacancy rates had fallen to 1 per cent or lower could see a 5 per cent to 20 per cent growth in rents.

Real Estate Institute of Queensland CEO Antonia Mercorella said the lack of rental availability was putting unsustainable pressure on the housing sector. "We're seeing an unprecedented level of diminishing rental availability that's placing significant pressure on our state's housing sector — so much so that it's unsustainable and why urgent action is required to better support both increased and ongoing property investor activity in the Queensland property market and the contributions they make to the state economy," Ms Mercorella said

**Example of QLD REGIONS WITH TIGHTEST RENTAL VACANCY RATES FOR HOUSES**

- Beaudesert Logan-Beaudesert 0.4%
- Gold Coast Hinterland Gold Coast 0.9%
- Mudgeeraba-Tallebudgera Gold Coast 0.0%
- Nerang Gold Coast 0.2%
- Ormeau-Oxenford Gold Coast 0.3%
- Robina Gold Coast 0.4%







## HOP TO IT...

**Brrrrrrrr, it feels like a little local freeze is on the way, so it's a good time for everyone in the community to be vigilant with safety around heating, fires and fire safety.**

Do you have current and operating smoke detector alarms installed? Do you have an exit plan from your dwelling should the need arrive? QFES (Queensland Fire) website has fantastic information and resources which I highly recommend you read to keep you and your family safe.

By the time you read this the Easter Bunny will have visited, and likely chocolate overload has happened (maybe even for some oldies!). If you are looking for opportunities to burn the sugar, take advantage of the walkways, forests and parks we have here.

I'd ask a simple favour - that in your travels you keep an eye out for one another; kids will likely be everywhere on bikes, trikes and mucking around; people are walking dogs (or cats, yes, I have seen it!) and some people just get caught up in their own world sometimes which is totally acceptable. So, enjoy life and take care whatever obstacle may pop up.

Overall, most have been abiding by the rules up here of late; be it traffic, Covid or criminal in nature. We are generous up here with educating everyone, but some people just don't get it, or are just plain belligerent and indignant. Oh well, financial incentives or a trip to court

will be used in those situations by me and the crew. You can't say you weren't warned!

Take care on the roads – we will continue to campaign around road safety.

As always, report matters that might seem suspicious, your information is just a phone call away and may help save someone's life or protect their property; you never know.

**Sgt Mark Shields**  
**OIC North Tamborine Police**

# SUNCORP



## Retail Agency

North Tamborine Shopping Centre  
15 Main St, Tamborine Mountain QLD 4272  
9am – 4pm Monday to Thursday  
9am – 4.30pm Friday  
**(07) 5545 4814**



## Get the facts

on Queensland's most dangerous behaviours behind the wheel.

Remember the FATAL FIVE

### DRINK AND DRUG DRIVING

#### DRINK DRIVING

More than **1 in 4** drivers and riders killed on Australian roads have a blood alcohol content exceeding the legal limit.



#### DRUG DRIVING

Drug use increases the risk of being involved in a crash, the risk is similar to driving with blood alcohol of **up to 0.15%**.



#### MEDICATION

Almost **1 in 4** Australian drivers ignore medication warning labels and continue to drive after taking prescription drugs. Some medications can impair your ability to drive.



### SPEEDING

Speeds just **5km/h** over the speed limit in urban areas and **10km/h** in rural areas are enough to double the risk of a crash.



### SEATBELTS

Unrestrained drivers and passengers are **8 times** more likely to be killed in a road crash.



### DISTRACTION

Using a mobile phone while driving is highly distracting and increases your risk of a crash **four-fold**, even when using a hands-free kit.



### FATIGUE

A driver who has been awake for 17 hours has a driving ability similar to a driver with blood alcohol concentration of **0.05**.







## JON KRAUSE MP

State Member for Scenic Rim

### KEEP SUPPORTING THE LOCALS, WHERE YOU CAN

Lockdowns, uncertainty, cancelled bookings and orders, last minute changes to plans – these are all things that have had an impact in one way or another on business confidence across our region and the nation recently. Knowing who you are dealing with in these times can be very reassuring, and so what a time to give the locals in business a go.

Government at all levels needs to make it easier for these businesses to grow. In Parliament recently I spoke about how State planning laws and council planning schemes under those laws can be too hard for small businesses – especially those just starting out – to get their head around (let alone the costs!). There is a huge untapped opportunity to create jobs that is being stifled. Let's unleash the potential.

#### AMBULANCE COVERAGE IN THE REGION

Over several years, I've raised concerns about the Queensland Ambulance Service's dynamic deployment system (DDS) and its practical effect on local coverage in the Beaudesert, Canungra and Tamborine Mountain districts – and I did so again in Parliament in late March. While I'm sure it is designed with the best of intentions, this system's practical impact on our communities can be that local crews may sometimes be drawn away from the area for extended periods – especially if they are deployed elsewhere after completing a task from our district (e.g., assigned to assist a patient on the Gold Coast after delivering a Mountain resident to the Gold Coast University Hospital).

In urban areas, where it doesn't take too long for an ambulance to drive across localities to meet a call, this system probably works fine. In our area, it means sometimes people in need might need to wait for an ambulance from the Gold Coast, or Logan, to drive into the area if local crews are otherwise deployed. I have tried numerous times to have this system changed, so that our local crews are not deployed under the DDS – so they can return to their areas to ensure maximum coverage for locals. It's still a work-in-progress. Once again, I thank the Rotarians of Tamborine Mountain for raising this issue with the Government.

#### TAMBORINE MOUNTAIN SHOW

At the time of writing this column, the Tamborine Mountain Show is still going ahead and will be an exciting event for those in the local community and for the visitors it attracts from around the region. The Tamborine Mountain Show was cancelled last year due to COVID-19. However, I look forward to seeing many of you at the Tamborine Mountain Show on Saturday 17 April. If you can make it, come along to support local producers and businesses.

#### CONGRATULATORY LETTERS

Do you know someone with a significant birthday or anniversary coming up? I'd love to write them a letter to celebrate their milestone. Depending on the occasion, you can also receive a letter from Federal Member, Scott Buchholz MP, the Premier of Queensland, Governor of Queensland, Prime Minister of Australia, Governor-General, or Her Majesty the Queen. For more information or to request a congratulatory letter, please contact my office on 1800 813 960 or email [scenicrim@parliament.qld.gov.au](mailto:scenicrim@parliament.qld.gov.au)

**If you have an issue that you think should be fixed, I encourage you to contact my office, toll-free on 1800 813 960, so I can lobby on your behalf in Brisbane.**



## SCOTT BUCHHOLZ

Federal Member for Wright

### FLOODING

While it was great to see rain falling across the region, we did see some flash flooding which impacted people across the Scenic Rim and elsewhere. This left many communities temporarily isolated, with damaged roads, causeways and embankments and in limited cases, damage to private property. It was tragic to hear of the devastating loss of life and my thoughts are with all those who knew David Hornman, particularly his family and friends.

We saw the issue with flooding once again at Eagle Heights Road (Curtis Falls) on Tamborine Mountain and I know this is an ongoing concern that has been raised on a number of occasions. I look forward to the Scenic Rim Council and the Department of Transport and Main Roads looking into this issue and finding a solution for local businesses.

The Federal and State Governments acted quickly to ensure support is available to the impacted local council areas, including the Scenic Rim, for their counter disaster operations and the restoration of essential public assets.

#### POWERING COMMUNITIES PROGRAM

The Australian Government has opened the Powering Communities Program. Through this program community organisations across our region can apply for a share of \$10.2 million for local energy saving projects that will lower power bills and help reduce Australia's emissions.

The program will fund up to 12 projects worth a total of \$67,700 and I urge all local community groups to express interest, through my office.

To give you an idea on how the grant may be used, eligible organisations could:

- upgrade equipment to reduce energy consumption
- undertake energy management activities and assessments, such as energy systems assessments and feasibility studies
- invest in energy monitoring and management systems
- invest in on-site renewable energy and solar-connected batteries.

More information at [www.energy.gov.au/government-priorities/energy-programs/powering-communities-program](http://www.energy.gov.au/government-priorities/energy-programs/powering-communities-program)

#### STRONGER SOCIAL SECURITY SAFETY NET

The rate of working age payments will be permanently boosted following the historic passage of the Strengthening Income Support package through Parliament in March. The package will increase the base rate for about 1.9 million working age payment recipients by \$50 per fortnight, including about 1.1 million JobSeeker Payment recipients, at a cost of \$9 billion across the forward estimates.

This is the biggest year-on-year increase to the rate of unemployment support since 1986. Importantly though, with jobs returning and the economy recovering, we're supporting Australians into work, with the bolstered \$150 per fortnight income free area. That means more income support recipients, with limited working hours, can keep more of what they earn through work. Jobs are returning and the number of unemployed persons for every job vacancy has since fallen below pre-lockdown levels to 4.2 unemployed persons per vacancy.

During the pandemic, the Morrison Government has paid out more than \$20 billion in temporary support.





# Letters to the Editor

Readers are reminded that letters to the editor must show full name of writer for publication.

## POSTPONEMENT OF CELEBRATION OF PAM GIFFARD'S LIFE

**Much-loved Pam Giffard was quietly sent on her way by a small group of immediate family. The well-known intention was to follow up with a get-together of friends and extended family on April 10 which was a couple of days before her 90th birthday.**

Preparations were well advanced, but the upsurge of COVID-19 caused a rethink. Some family could not have attended but the main reason was the possibility of infection spreading in an emotional crowd. That was too awful to contemplate. Therefore, we have postponed the party to celebrate Pam's life to a time when the world is in better shape.

Knowing Pam, she would certainly have approved.

Phil Giffard

## COUNCIL'S IDENTITY CONFUSION IN NORTH TAMBORINE'S MAIN ST

**Identity confusion – Shopping Centre or Tourism Food, Art and Nature Hub?**

I refer to the recent announcement of the opening of North Stores. Congratulations on the innovative approach to getting such a project off the ground.

In 2019 Council approved a "shopping centre" of <400m<sup>2</sup> on the site of 46-48 Main Street. The public did not get to have their say as the application was deemed to be "code" rather than "impact" assessable, given how it was presented.

Under the Tamborine Mountain Zone of the Beaudesert Shire Planning Scheme 2007, "Development in the Business Precinct is typically commercial in character and caters to the convenience shopping needs of the local catchment, by providing limited access to comparison retail and specialty shopping. Development within this Precinct also provides for limited access to lower order professional offices and businesses". So far so good. Throw in a couple of retail tenancies and some "possible" health professional offices and your application is good to go.

But then along comes the possibility of having your "shopping centre" funded via a State Government Grant under its Growing Tourism Infrastructure Fund and the possibilities are endless! Let's do a quick "Minor Change" application to Council and make significant changes to the plans already approved – it's only a "Minor Change" so won't need to bother the councillors with a pesky vote. Gone are the "possible" health professional offices, miraculously replaced with a 134m<sup>2</sup> "workshop/event space". There is also another new building, a deck, and the toilets and water tank have been relocated, as has the market

garden providing the produce for the "garden to plate" experience – it is to be on the site of the biocycle wastewater system.

The "shopping centre" complete with compressed gravel carparking has morphed into a tourism venue – it must have – it was awarded a \$990,000 grant.

How do the other local food venue owners feel about this? They have built their businesses from scratch, survived (or not) through the trials of COVID-19 and done it tough.

Can Council please explain how this came to pass? And what level of support did Council provide for the grant application (if any)?

Amanda Hay

## HAVE YOUR SAY ON SCENIC RIM'S RECREATION FACILITIES

**Have you had Your Say on Scenic Rim's Sporting, Camping and Recreation Facilities?**

These are important topics, and it is good to see that Scenic Rim Council is consulting with the community. However, it is a shame that yet another consultant has to be used. I am sure that council officers have the expertise to conduct these surveys.

My other disappointment is that Council did not include in the survey how these facilities will be run or managed. This question is integral to the whole topic. Take for example the Tamborine Mountain Sports Centre. This is an excellent centre which encompasses a number of activities: sporting, bridge, scouts, Landcare and hang gliding, but where does the operational funding come from?

Not from the council, and the centre is struggling. Volunteers do an excellent job in keeping the centre running but they need operational funds, and this should come from the council. The survey should be consulting the community on this aspect.

I look forward to hearing the results of the survey from the council and what their future plans are.

Nigel Waistell



**Optometrist**

Call us now for a consultation  
**5545 0277**  
17-27 Main Western Rd, North Tamborine



*Relationship Sanctuary*  
ON TAMBORINE

**COUNSELLING FOR INDIVIDUALS, COUPLES & FAMILIES**



**0401 517 243**  
Appointments in person or via video call.  
Reasonable Rates.

[linda@relationshipsanctuary.com.au](mailto:linda@relationshipsanctuary.com.au)



**SCENIC RIM MUSIC SCHOOL**

*invites you to experience our brilliant concept in music tuition:*

PIANO STRINGS VOICE  
on Tamborine Mountain

*to register your interest:*  
**07 5545 4700 or 0422 788 399**

Ask us about our local 'do-re-we' classes for Pre-schoolers.  
[www.scenic-rim-youth-choir.org](http://www.scenic-rim-youth-choir.org)




**BEAUMONT CARE**  
*Warm-Hearted Care, Your Way*

Residential Aged Care,  
Respite and Home Care Services  
enquiries: 0499 779 877

NDIS enquiries: 0407 978 250  
Career opportunities: 0448 800 953  
[jobs@beaumontcare.com.au](mailto:jobs@beaumontcare.com.au)



Clontarf • Kippa-Ring • Redcliffe • Rothwell • Wamuran • Mt Tamborine



**NEWHAVEN**  
FUNERALS, CREMATORIUM & MEMORIAL GARDENS

**The only purely 100% Australian Funeral Company and Crematorium**

**Winner Qld Seniors Excellence Award**

Enquiries Welcome **5593 4777**

**Advertising?**  
**0417 238 238**  
Call or email  
[advertising@scenicnews.com.au](mailto:advertising@scenicnews.com.au)





## TAMPORINE MOUNTAIN MEDICAL PRACTICE

14 Main Western Road  
North Tamborine  
and  
Shop 1/17 Southport Avenue  
Eagle Heights

Phone: 07 5545 1222

[www.tamborinemountainmedical.com.au](http://www.tamborinemountainmedical.com.au)  
online booking service available on this website

50 years of continuous service to the  
Tamborine Mountain community

Affiliated with three universities

### COMPREHENSIVE HEALTH CARE SERVICE

#### Opening Hours:

Mon – Thurs 8.30 am – 6:15 pm  
Fri 8.30 am – 5 pm  
Sat 8.30 am – 12 noon  
Sun 8.30 am – 10.30 am

Dr Ann Bennett  
Dr Leeann Carr-Brown  
Dr Jan Zomerdijk  
Dr Sanne Kreijkamp-Kaspers  
Dr Henri Coombs  
Dr Joe Gambin  
Dr Cobie Powell  
Dr Hok-Yee Siu  
Dr Marije Dalebout  
Dr Jardin Taha  
Dr Nisha Nangrani  
Dr Lauren Ries

Accredited by



## SHARP COMMENT

TOM SHARP

### An open Letter to Cr Jeff McConnell

Dear Jeff,

**I note with curiosity your councillor comments in the *Scenic News* edition, dated 25 March 2021.**

Your first concern is what you term as “the vitriolic nature of anti-council posts on Facebook” and why one would become a councillor. You go on to discuss the popularity of decisions, helping people and making a difference. You also add that you always look at the long-term strategic impact of all decisions.

You state further that a councillor should be free from personal conflict and that you will not be opposing contentious issues the Mayor supports just to go against him because you do not like him and to score political points.

I can only suggest the people of the region expect nothing less with regards to personal conflict or political point scoring. However, I ask you this, are the “contentious issues” being addressed with proper knowledge and integrity? Knowledge is two-fold in terms of the information being provided by the bureaucracy and the councillors possessing the knowledge of its constituency’s thoughts on the contentious issue at hand i.e., knowing how to read public opinion. Without the proper knowledge, how could anyone possibly hope to make a decision with any integrity? One could not.

The increase in “constituency temperature” right across this region by way of Facebook, local journalists, commentators, community leaders, and petitions is due to a total misalignment with people’s values and principles versus Council’s “clarity of process”.

You highlight that the Scenic Rim is too small to have an opposition party like Brisbane and the Gold Coast. I would like to point out that while Brisbane City Council is political party based and currently governed by an LNP majority, the Gold Coast City Council is not. You will find that the elected Gold Coast members mostly, if not all, fly under an independent banner and there is no political party governing this municipality.

While on the subject of party politics, could you advise why during the 2020 State Election Campaign the Scenic Rim Regional Council gave an exclusive full council briefing to One Nation Candidate, Paul Henselin and Paul’s party leader, Pauline Hanson? I was made aware of this by Paul during the campaign and while consulting other candidates discovered the same opportunity was not afforded to either the LNP candidate, Jon Krause; ALP candidate, Luz Stanton; UAP candidate, Bradley Fowler; IMOP candidate, Deborah Husbands and QG candidate, Pietro Agnoletto?

While I do not begrudge Paul and One Nation for this opportunity, I find this secret, exclusive meeting conducted by an independent council to be of the most extraordinary behaviour in the worst possible way and totally unaligned with the values and principles of the people of this region. Please explain?

Jeff, you go on to advise there are no secret meetings in council yet in the same breath there is a “confidential” workshop. Could your workshop be defined as a “meeting” of councillors and officers?

In these “workshops” are not council business matters discussed and proposals formulated?

If you do not engage with the constituents with regard to these “workshops” and secure their knowledge, how do councillors and bureaucrats alike make the appropriate proposals with any integrity?

Do you agree or disagree that democracy is best served by meetings conducted in public, not behind closed doors?

Jeff, you went on to state that confidential workshops were the standard practice before amalgamation. This I can assure you is complete bunkum and can advise that the “committee system” was in place in the first term of Scenic Rim Regional Council post amalgamation of Beaudesert and Boonah Shires.

These various committees covering finance, planning, operations, community service, waste etc were made up of councillors and officers formulating policy and proposals that were put forward at the next full council ordinary meeting. Additionally, it was made law by the State Government of Queensland circa 1988 that all committee meetings were made open to the public and media for scrutiny. If you wish to refer back to the annual reports of both Beaudesert and Boonah Shires you will find these committees represented.

Lastly, you claim decisions are only made in Ordinary Meetings. This has already been proved to be completely false with regard to decisions relating to:

- Water for Warrill Project
- COVID-19 relief package – announced while Council was meant to be in caretaker mode.
- Cancellation of Eat Local Week 2019
- Scenic Rim Farm Box
- Cancellation of the Helen Street Pig and Calf Saleyard Lease.

These are simply a handful of instances that immediately come to mind.

I wonder how many changes to the SRRC budget have occurred that have not been brought before an ordinary meeting in open session and are required to by Queensland Government legislation and regulations?

What would it take to find out? A full independent audit and investigation?

If I am in anyway, shape or form incorrect, please do advise me, along with the exact details and evidence.

In closing Jeff, please consider that maybe Council is not all knowing and use the next three years left in this term to fight for your people, understand their needs and put those needs back on the council agenda for deliberation in an open public and knowledge-led forum.



# STATE GRANT WILL FUND PROJECT SECOND STAGE

Under its Growing Tourism Infrastructure Fund, the State Government has granted \$990,000 in funding for Stage Two of the North Stores development on Tamborine Mountain, which will include a cooking school, event space, café and providore shop showcasing the Scenic Rim's local produce.

Scenic Rim Mayor Greg Christensen said it was exciting news, not just for the proponents, but for the whole Scenic Rim.

Fund recipient Brenda Fawdon said she and her business partner, Sonja Drexler, were thrilled to receive the Growing Tourism Infrastructure Fund grant for stage two of their North Stores food tourism development in Main Street, North Tamborine.

"We are so excited to receive the grant and extremely grateful to the Queensland Government for this opportunity," she said.

"Sonja and I have spent the past couple of years championing local produce, which we have sourced directly from Scenic Rim and local growers on a weekly basis and sold at the Gold Coast Farmers' Markets.

"Sonja, who is also the talented designer of the North Stores building, and I are literally building on and cementing our connection with the region in bricks and mortar.

"We are committed to growing our business focusing on the Scenic Rim and supporting the fabulous local producers and products of our region.

"As well as dropping by for a coffee or to pick up a picnic box, visitors will soon be able to attend a workshop or event in the purpose-built space."

Cr Christensen said the council was pleased to advocate for the project and welcomed the new operation to the Scenic Rim's existing array of tourism and food experiences.

"The new venture aligns perfectly with the aims of the Scenic



Brenda Fawdon and Sonja Drexler at their North Stores food tourism development.

Rim Tourism Strategy and the Scenic Rim Regional Prosperity Strategy, and will provide another great option for our visitors, while creating jobs for our local people," he said.

He said council officers are working with the proponents to ensure the project complies with all council regulations.

ADVERTISEMENT



**Jon KRAUSE MP**  
Member for **Scenic Rim**

*Fighting for our fair share*

☎ 07 5515 1100 f JonKrauseMP

Authorised by J.Krause. 91 Brisbane Street, Beaudesert QLD 4285.

*Proudly maintaining the smiles of the Tamborine Mountain Community for over 25 years!*



## FAMILY & COSMETIC DENTISTRY

- We offer a comprehensive dental service covering all areas of dentistry.
- Preferred providers for BUPA, Medibank Private, CBHS & HCF.

PHONE: 5545 2788

MOBILE: 0455 452 738

info@tamborinemountaindental.com.au  
www.tamborinemountaindental.com.au

OUR TEAM:

Dr SANDEEP GUPTA B.D.Sc

NATASHA SATTI B.OHT



TAMBORINE MOUNTAIN DENTAL

EAGLE HEIGHTS SHOPPING VILLAGE (above FOODWORKS) 14/17 SOUTHPORT AVE, EAGLE HEIGHTS



# Q&A with the Scenic News

Mitch Gregory is one of the co-owners of Firehaus in Brisbane, servicing from Byron Bay to the Sunshine Coast and out west to Toowoomba. The company is young, but between staff and contractors has over 60 years' experience servicing the fireplace industry. When Mitch moved to Queensland in 2003, he lived at the bottom of Tamborine Mountain (in Coomera) and spent a lot of time venturing up to the cafés and restaurants. He also spent six years living in Jimboomba, loves the lifestyle that comes with living on a rural property and looks forward to warming many homes over the coming winter.

## What inspired you to start your business, and what do you have planned in 2021?

My inspiration to open Firehaus was driven by seeing a gap in the market in both Brisbane and the Gold Coast; other fireplace companies were not offering a complete design, supply and installation service.

2021 will see us open our second fireplace showroom where we will have the single largest working display of gas, wood, electric and bioethanol fireplaces by mid year.

## How did COVID-19 affect you and your business in 2020?

As unfortunate as Covid-19 was for many other industries throughout Queensland and Australia during 2020 and even into 2021, our business did see the benefits of closed international borders, as a lot of consumers were spending their money on home renovations and adding warmth to their homes with fireplaces.

## What did you do before opening your business?

Prior to opening Firehaus I was working for another locally-owned fireplace company where I learned the tools of the trade, and took what I had learnt and put that into my own business, but also adding a few points of difference.

## How would you describe your business?

Our business model is a high energy business, extremely customer-focused on the things that matter the most and bringing forward some of the best quality brands in Australia and from around the world. We have a goal of being the biggest and best in Brisbane and the Gold Coast.

## What is it about your business that you love? What makes your business stand out from other, similar businesses? Is it a business that gives you satisfaction?

Our people, who are passionate about finding the right solution for every



Mitch Gregory

individual customer. Our people are what make us stand out from other businesses, and the satisfaction we receive is when customers ring, text, send us pictures and tag us on social media to let us know how happy they are with their fireplaces.

## What challenges have you had in business over this period of time?

Being the new player in the market has had its challenges. However, we have taken them head-on to ensure we stay grounded and achieve our end result of being the biggest and best.

## If you were not doing this what would your ideal job be?

Growing up, I spent a lot of time in landscaping and horticulture. I would find it extremely relaxing and therapeutic sitting on a ride-on lawn mower and mowing a golf course. There is nothing more satisfying than looking at the lawns after they have been freshly trimmed.

## Interesting facts about yourself?

At the age of 17, I had my first professional soccer contract in Western Australia, but an unfortunate accident with a chainsaw abruptly

brought the curtain down on that.

## What do you do for fun?

I am a family man, and spend as much time with my wife, daughters and family and when I am not working. I do, however, love the new Australian tradition of smoking meat and entertaining people with some pulled pork and brisket.

## Do you take holidays and if so, is there a favourite destination or activity?

Over the last five years I have travelled a lot to the USA, and by far my favourite destination has to be New York; I was lucky enough to get engaged in New York in 2018 and then later in 2019 got married under the Brooklyn Bridge in New York.

## Final thoughts?

We appreciate the opportunity to showcase Firehaus in this short profile, but would really like to say "thank you" to the readers of the **Scenic News** for their continued support of Firehaus over the last 18 months, and look forward to heating many, many more homes.



# CRICKET WASHOUT BUT GAME GOES ON



It's the Tambo Mountain under 12 cricket team and if they don't look all that happy it's because they have just learned their semi-final match has been cancelled due to wet weather.

On a brighter note, Tambo Mountain Bushrats Cricket Club will be hosting a round robin event on the Chris Wills Oval at the Sport and Recreation Centre, Long Road, this Saturday and Sunday.

On Saturday at 9.30am Victoria's Boonies Bushwackers will play the Queensland Cricketers Club, and at 1pm Tambo Mountain Bushrats will take on Lucky Stars Australia Transplant Cricket Inc.

On Sunday, the semi-finals and final will be played from 9.30am. These games are played regularly for the Lucky Stars-Chris Wills Cup.

They help raise awareness of the importance of organ and tissue donation around Australia. All the players representing the Transplant team have received donations of this kind. The team also includes ambassadors Andrew Robinson who is a former Brisbane Heat T20 representative and Nathan Reardon who has represented Australia and Brisbane Heat at a T20 level.

The matches at the weekend are being played in a T20 format with some revised rules.

Chris Wills was a transplant recipient, a Tambo Mountain local and an enthusiastic player and supporter for Tambo Mountain Bush Rats. Chris sadly passed away in 2009 but he remains strong in the hearts and minds of the members and players of the Bush Rats.

## CLUB TAMBORINE THEMED DINNER

The Club Tambo Themed Dinner which was reported as an event to be held on Saturday 10 April will actually be held on Saturday 17 April.

Theme for this event is 'Round the World' and will feature cuisine from various countries across the globe, including USA, Asia, Europe and Australia.

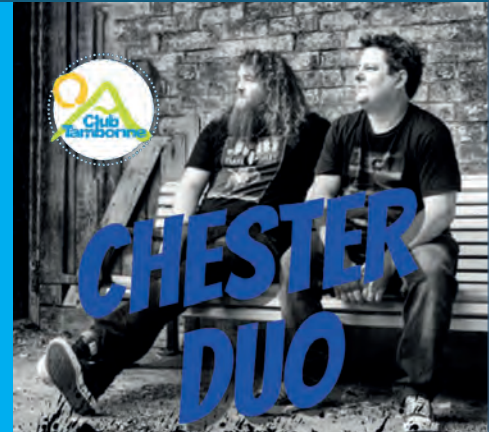
The menu for the event, scheduled to begin at 6pm, can be viewed on Club Tambo's website at [www.clubtamborine.com.au](http://www.clubtamborine.com.au) (under What's On/ News & More).

Alternatively, you can call in at the Club and check it out.



**FRIDAY**  
**9th APRIL**  
**@ 8.30pm**

• PUB ROCK •  
• RADIO HITS •  
**100% LIVE MUSIC**  
**CLUB**  
**TAMBORINE**  
FREE ENTRY



[www.chesterlivemusic.com.au](http://www.chesterlivemusic.com.au)

## 'ROUND THE WORLD

SATURDAY 17th APRIL

\$45.00 PER HEAD (PRE-BOOKINGS ESSENTIAL)

### AUSTRALIA

Baby Barra & Bugs with  
Garlic Prawns, served with  
Chips & Salad

### ASIA

Korean Chicken with Peking  
Duck Spring Rolls, served with  
Pancakes, Coconut Rice  
and Kimchee

### USA

Smoky Ribs & Buffalo Wings,  
served with a side of Corn Jack  
and Slaw

### EUROPE

Pork Knuckle & Lamb Coq au  
Vin, served with Dolmades,  
Sauerkraut & Couscous

**DESSERT:** add dessert to your meal for only \$8  
Belgian Waffles with Maple Syrup, Chocolate Sauce & Cream



EVERY FRIDAY AT 8.30PM.

MEMBERS RECEIVE AN  
AUTOMATIC ENTRY EACH  
WEEK!

**\$1300**

CURRENT JACKPOT

WE PRACTICE THE RESPONSIBLE ENJOYMENT OF GAMING.  
TERMS & CONDITIONS APPLY. SEE STAFF FOR DETAILS.

Sunday 25th April

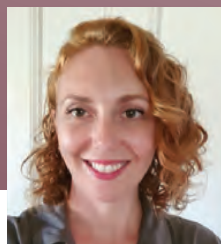
# ANZAC DAY

GUNFIRE BREAKFAST 8:30AM | TAMBORINE  
MOUNTAIN RSL SUB-BRANCH 2UP | BAREFOOT  
BOWLS |

LEST WE FORGET

**6-12 Beacon Road, Tambo Mountain**  
**07 5545 1308**





## NEONATAL JAUNDICE

If you've had a baby before, there's a chance you have photos in the first week of baby's life that are black and white or with select filters because suddenly your baby has started to look a little 'tanned'. Neonatal jaundice is very common and happens to 60 per cent of babies born at term, and there are times it is of concern, and times it is not.

When babies are born, they start to break down some of their red blood cells and haemoglobin. The byproduct of this is unconjugated bilirubin which builds up in the blood. This is often then deposited into the fatty tissue of the baby and causes them to look yellow on their skin and eyes. It is eliminated through urine and stool.

**Is this a problem?** Sometimes, yes. Many babies will develop jaundice day three to five, which is caused by normal newborn physiology. This does not necessarily cause a problem, unless the levels of jaundice get too high which can put the baby at risk of severe hyperbilirubinaemia and can lead to kernicterus, a very rare, severe type of brain damage. If a baby develops jaundice in the first 24 hours of life, their risk of severe hyperbilirubinaemia is much higher and requires immediate treatment.

### Who are the babies most at risk of developing jaundice?

Although it is important to know the risk factors, these can often be quite broad, so it is important for all parents to have an awareness of jaundice so they can keep an eye out for warning signs and concerns. Some of the risk factors include babies of mums whose blood type is rhesus negative, babies with blood group O, premature babies or those with an infection, or those with bruising to their heads from an instrumental delivery.

### What are the signs and symptoms of severe hyperbilirubinaemia?

Many babies develop jaundice, but it is only of concern if it becomes severe. Some of the clinical ways we assess this is through the baby's behaviour. A clinically well baby will have good tone and movement, wake for feeds and feed well. We also monitor how much milk the baby gets, and ensure they are passing enough urine (4 x wet nappies in 24hr period by day 3) and opening bowels with changes in stool colour. If there are any concerns a light or blood test may be performed.

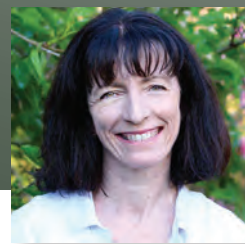
**What can you do to avoid it or help if your baby gets jaundice?** Bilirubin is excreted in the urine and stools of babies, so babies need to have adequate feeding by breast or bottle, and they also need exposure to natural light in order to break down the bilirubin.

**What do we do if we find a baby needs treatment?** If you feel that your baby is lethargic, difficult to rouse, has poor tone, poor output and isn't feeding, they need to be assessed in Emergency at hospital by a neonatal doctor. They will perform a blood test to see how much bilirubin is in the baby's blood, and if it is high the baby may be put on UV light therapy to help to break down the bilirubin.

**Where can I get more information?** Speak to your midwife, neonatal doctor or GP, or visit the Raising Children website on jaundice <https://raisingchildren.net.au/newborns/health-daily-care/health-concerns/jaundice-in-newborns>

(Bree Lowing is a Registered Midwife and provides bulk-billed in-home antenatal and postnatal services through The Mountain Midwife [www.themountainmidwife.com.au](http://www.themountainmidwife.com.au))

## Relationships



Ubuntu is a Zulu word meaning "I am, because we are". Desmond Tutu states in his book *No Future Without Forgiveness*, that ubuntu sees our humanity as being part of a greater whole. It is not a case of "I think, therefore I am" but rather "I am human because I belong, I participate, I share". A person with ubuntu is open, affirming and available to others.



An African aid worker reported that attempts to teach local children competitive games hopelessly failed. When it came to a running race that included a prize for the winner, the children linked arms and skipped across the finish line together. They did not grasp the concept of competition because it was not ingrained in their culture. In their community they grow up conditioned to an ubuntu system where all things are shared, including success and happiness.

Barak Obama made a speech at Nelson Mandela's memorial service. He said that ubuntu is a word that captures Mandela's greatest gift: his recognition that we are all bound together in ways that are invisible to the eye; that there is a oneness to humanity; that we achieve ourselves by sharing ourselves with others and caring for those around us.

Imagine a world where the spirit of ubuntu was widespread, crossing every ethnic boundary. Is it possible that poverty could be eliminated? In 1987 Bob Hawke famously made a bold declaration that by 1990 no Australian child would live in poverty. It was an unattainable dream because poverty cannot be eliminated solely by political parties. What needs to change is the ethics, beliefs and behaviour of the general population.

According to the United Nations Food and Agricultural Organisation, the world produces 1.5 times enough food for everyone on the planet, and world food production is increasing at a greater rate than world population growth. Why then do we have a hunger problem? It is estimated that 30 to 40 per cent of food is wasted.

In affluent societies, imperfect produce is discarded and left to rot. Infrastructure and safe storage is inadequate in developing countries; getting food to those who need it is often hampered by war and conflict. These issues could be addressed if the world came together as a united community, much like the African children who crossed the finish line together.

Global issues aside, we make a difference in our world by helping those around us. What often prevents us from doing that is fear. Fear that our resources are limited and that by sharing possessions, time, energy and skills, we will have insufficient left for ourselves. An ancient proverb states "One person gives freely yet gains even more; another withholds but comes to poverty." Our willingness to share results in a boomerang of generosity.

You might think that you are just one person and your influence is minimal. Get inspired by acquainting yourself with the biographies of world changers. Like Nelson Mandela, you can create a ripple effect that spreads the spirit of ubuntu far and wide.

Linda Gray  
[linda@relationshipsantuary.com.au](mailto:linda@relationshipsantuary.com.au)  
0401 517 243



## IMMUNITY

**Living organisms are beset by threats throughout their lives, externally from microbial pathogens such as bacteria, parasites and viruses as well as potentially damaging toxins; internally from threatening malfunctions such as cancer.**

The complex network of organs, cells, enzymes, chemicals and processes which organisms use to protect their body from these external and internal threats is described as the immune system.

The immune system has two components:

Innate immunity is a first line of defence; it is general and not specific to any pathogen, has no memory and does not confer any long-lasting immunity to the host. Innate immunity includes physical barriers, mucus, biochemicals, inflammation and fever responses. It is found in all classes of plant and animal life.

Adaptive immunity provides a specific response to a pathogen. The initial exposure to the pathogen creates an effector response which eliminates or neutralises the pathogen. Subsequent exposure to the same invading pathogen will trigger a memory response which quickly recognises the pathogen and rapidly deploys a strong immune response to eliminate it. This response is found in vertebrates.

Not all external microbes are threats; in fact, certain bacteria create a micro biota which interacts with the immune system and help balance and protect the host.

The immune system itself can create vulnerability and damage due to low or over activity; these conditions are known as autoimmune disorders. The immune system can also produce an allergic response to harmless microbes such as pollen or certain foods when it launches an immune response to an incorrectly identified threat.

Pathogens also change and may slip through the immune system's memory response. A specific virus reproduces versions of itself; it can produce a replica virus that is different from the original because of genetic change through reassorting, recombining and mutating genomes.

Historically, it was observed that survivors of certain plagues were unlikely to have a recurrence, and this provided an insight into acquired immunity although



the mechanism of disease were unknown. Homeopathic practices of deliberate inoculation of diseased material can be traced back hundreds of years. English doctor Edward Jenner observed that milkmaids who previously had caught cowpox did not catch smallpox. He created the first vaccine when he used cowpox injections to confer immunity against smallpox - the term vaccine was derived from the Latin word for cow "vacca". On May 14, 1796, Jenner took fluid from a cowpox blister and scratched it into the skin of James Phipps, an eight-year-old boy. A single blister rose up on the spot, but James soon recovered. On July 1, Jenner inoculated the boy again, this time with smallpox matter, and no disease developed. The vaccine was a success.

Modern vaccines have eliminated and reduced many global deadly diseases such as smallpox, polio, tetanus and diphtheria as well as previously common potentially serious childhood diseases such as measles, rubella, pertussis and chickenpox.



## SLED DOG RACING AND SLED DOG TOURISM

**The Iditarod is the longest dog sled race in the world; it is held in Alaska every year over a gruelling 1510 km. They battle blizzards, freezing temperatures and moose on the trail.**



The team consists of 14 dogs and they finish the race in 8 to 14 days with only one mandatory 24-hour stop and two eight-hour stops; the musher has a choice where he or she stops.

There has been a ramping up of drug testing for the dogs after many tested positive for endurance drugs and the rest periods have been cut short by some competitors. The largest number of race entrants was in 2000 with 82 dog teams. Prize money is a luring \$50,000 and a new Dodge pick-up truck for the winner, with lesser amounts for place getters. The race has become so competitive that special musher pants have been designed so there is minimal stopping for toilet breaks. Carrying a gun is also allowed to shoot moose if they become threatening.

The number of young, otherwise healthy dogs that die from the race is becoming a concern. In 2019 a winning dog, just five-years-old, died from pneumonia and there has been a loss of national sponsors amid doping scandals and protests by animal rights activists with some shocking footage. The Iditarod rule book includes a list of dog deaths as acceptable.

Dog sledding and tourism has become very popular in Canada, Sweden, Finland, Iceland, Greenland, Siberia, Patagonia, Japan and China. PETA (People for the Ethical Treatment of Animals) has exposed how many of these businesses keep their dogs in between seasons - the dogs' world extends no further than the 6ft tether or chain; no exercise, company, play or mental stimulation.

Slow dog runners are doomed, and a US sled dog kennel came under fire when it was revealed by PACFA (Pet Animal Care Facilities Act) that a number of dogs were shot in the head and buried. If you are planning a dog sledding adventure at least look into their kennels; even better, do not support the exploitation of these dogs.

**Pan Brandis**  
**Dip. Canine Prac.**



# TAMBORINE MOUNTAIN & SURROUNDS

## Pethers Rainforest Restaurant

Intimate, romantic dining experience

Open Thursday, Friday and Saturday evenings – quiet, private and very intimate setting, ideal for couples.  
28B Geissmann Street  
(07) 5545 4577



1



## Tamborine Mountain Distillery

Over 300 international awards

Australia's most internationally-awarded distillery and liquor brand in the New Millennium. Manufacturers of vodkas, liqueurs, schnapps, eaux-de-vie. 7 days, 10am-5pm. 10 Macdonnell Road  
(07) 5545 3452



2



## Tamborine Mountain Pizzas

Dine-in, Takeaway, Delivery

Established in 1994, enjoy our signature dough prepared daily on site topped with a variety of fresh ingredients, many locally sourced.  
4/11 Main Street  
(07) 5545 3888



3



## The Polish Place

Polish Restaurant. Cottages. Gallery. Coffee. Vodka. A true Polish Experience

With 180° views overlooking the Great Dividing Range, it's the ideal location to experience luxury accommodation, scrumptious Polish cuisine, beers and vodkas  
www.polishplace.com.au  
333 Main Western Rd, 5545 1603



4



## Rainforest Restaurant & Lounge Bar

Dining within a tranquil rainforest setting!

"Loved the atmosphere and the service was very warm and friendly. The food was beyond great and we would love to come back every night if we could. Fantastic." Brad.C - The Fork

Thunderbird Park, Cnr Cedar Creek Falls Rd (07) 5545 7990



5



## Fox and Hounds Country Inn

Gold Coast's only Authentic English Pub

Share a hearty dining experience with friends and family, while soaking up the spectacular surrounds. Open for lunch and dinner 7 days.  
7 Elevation Drive, Wongawallan  
(07) 5665 7582



6



## Three Little Pigs

Bistro and Bar

Fine food and fabulous wine. Perfect place for relaxing and catching up with friends and family, or as a special treat.  
13 Main Street  
Nth Tamborine 07 5545 4484



7



## Witches Falls Winery & Cellar Door

Tamborine Mountain's only working winery

Wines that shine with individuality and confidence. Enjoy wine tasting in our relaxed and picturesque setting. Locals receive members pricing. Open daily 10am to 4pm weekdays and 10am to 5pm weekends.  
79 Main Western Road  
(07) 5545 2609



8



## Club Tamborine

Visitors welcome

Your local on the Mountain: Full bar, Bistro, Gaming, Ubet, Keno, Fox Sports, regular live entertainment and bowls in a relaxed environment.  
6-12 Beacon Road  
(07) 5545 1308



9



## St Bernards Hotel

Idyllic location with sweeping views, spectacular, fine dining for every occasion. Perfect for weddings, functions, conferences. Come and be greeted by our two St Bernards, and enjoy real country hospitality!  
101 Alpine Terrace – 07 5545 1177



10



## Tamborine Rainforest Skywalk

Exciting eco-adventure: a unique and thrilling way to explore the rainforest. Café offering delicious light foods, cakes and coffees. Gift shop, carpark and toilets.  
333 Geissmann Dr, Nth Tamborine  
www.rainforestskywalk.com.au  
(07) 5545 5222



11



## Spare Part Solutions

Parts plus expert, personalised advice

We can supply parts for Automotive, 4x4, trucks & earthmoving, motorbikes, bicycles, general engineering, mowers, small machinery and more.  
24 Main Street 07 5545 1988



12



## Tamborine Mountain Pasta

### TAKE AWAY

OPEN 7 days:

11.30am – 2.30 pm lunch  
5pm – 8pm dinner

Shop 1A, 15 Main Street  
North Tamborine

ph: 5545 3795



13



## El Burro Cantina

Come for the warmth, laughter and great MEXICAN FOOD!  
• Fully licensed • Great for parties!  
• Takeaway available

Flame Tree Plaza  
16-20 Main Western Rd  
North Tamborine 07 5545 4003



14





# LOCAL DINING, SHOPPING AND SERVICES



## EAGLE HEIGHTS BAKERY

25 Southport Ave, Eagle Heights

**15**

Open 7 days - 9.30-5pm  
(including public holidays)  
14 year-old sourdough,  
30 different breads & flours

### 5545 4011

Serving the community for 40 years



**20**

All Day Menu - Breakfast, Lunch, Pizza, Burgers, Boutique Coffee, Cakes, Vegan & Vegetarian options

1-5 Eagle Heights Road  
North Tambores  
**07 5545 1888**

OPEN 7 DAYS

## TAMBORINE MOUNTAIN COFFEE PLANTATION

On our property, we aim to provide a completely local experience. All of our coffee has been carefully roasted and blended by our team to highlight the flavour of the coffee we grow. Come and try it for yourself, and learn all about how we do it!

64 Alpine Terrace, Tambores Mountain  
@tamboresmountaincoffee  
www.tamboresmountaincoffee.com.au

**17**

**07 5545 2777**

## GERMAN CUCKOO CLOCK NEST

**18**

Grandfather • Cuckoo • Mantel  
• Wall Clocks • Watches

Watch battery replacement  
and clock repairs.

OPEN 7 DAYS 10AM - 4PM

143 Long Road, Tambores Mountain  
Ph: (07) 5545 1334 • info@clocks.com.au  
www.clocks.com.au



# INTEREST RISING FOR CAR SHOW

The countdown to the inaugural Tamborine Mountain Rotary Car Show has started and already an impressive list of entries is being pre-registered by the club.

The Car Show on May 2 will have several different categories on display: Antique, Vintage, Classic, Custom and Muscle Cars, as well as Bikes.

It promises to be an exciting event that has the potential to grow into one of the most popular automobile attractions in South-East Queensland, especially given that it is an autumn event and is being held at one of the most pleasant times during the year.

Now is the time for anyone interested in displaying their vehicle at the show to register.

The Car Show will be held at the Tamborine Mountain Sport and Recreation Centre on Long Road which has asphalt hard stands for most of the display cars. The grounds will open at 6.30am for display cars and bikes. There will also be market stall holders present, as well as food and coffee vans that will be set up prior to public access from 8am. The Car Show is expected to wrap up around 2pm following award presentations at 1pm. Rotary wants all types of cars displayed, so if you have one that fits one of the following categories you are welcome to pre-register for a spot at the car show.

**VINTAGE CAR:** Generally, cars that are considered Vintage were manufactured between the years of 1919 and 1930, and the car should



be maintained in a way that keeps it true to the original manufacturer specifications.

**ANTIQUE CAR:** Generally, in most cases it is a car that's over 45 years old and the car should be maintained in a way that keeps it true to the original manufacturer specifications.

**CLASSIC CAR:** A car must be at least 20 years old, but not more than 45 years old to generally be considered a classic car. It should again have been repaired and maintained in a way that keeps it true to its original design and specifications.

**MUSCLE CAR:** This classification covers factory performance cars from the early 1960s through to around 2000. These can be Australian, USA and European manufactured cars.

**CUSTOM/HOT ROD:** Typically speaking, a car that is considered a Custom or Hot Rod car could fit any of the above categories as far as date of manufacture is concerned, but it has been highly modified or had a powerful engine installed. It could also have improved brakes, body modifications and newer suspension design, as well as custom wheels installed. Hot Rods fit this category but are open wheeled type cars.

Are you wanting to secure a display car park in the Car Show? If so, please complete a pre-registration form now to secure a Display Car space. This can be accessed via the QR Code on the display car pre-registration flyer. If you are a bit concerned about the long-range weather forecast, you then have to 23 April (approximately one week prior to the event) to lock your booking in through the booking site (Eventbrite). This booking information is included in the pre-registration process. Display car spaces cannot be guaranteed if the booking process is made after the due date. No cars will be accepted on the day without prior arrangement, as planning for the event is important to ensure the event runs smoothly.

Rotary as a charity intends to direct funds raised from this event directly back into the community supporting schools and youth development, sports clubs, and other community groups.

For additional information, contact Dave Power on 0419 743 275 or email [tamborinemountainsatellite@coomerariverrotary.org.au](mailto:tamborinemountainsatellite@coomerariverrotary.org.au)

This event is being sponsored by Eagle Heights Mountain Resort Tamborine Mountain.



## Tamborine Mountain Car Show



# Sunday 2 May 2021

Grounds open to Public from **8am**

Tamborine Mountain Sports Centre - 400 Long Road, Tamborine Mountain

### Display / Show Car Pre-Registration

Book your show car in now to ensure you get a spot.  
Grounds open at 6.30am for show cars

**Pre-Register Online Now**  
Use QR Code below

Bring your family & enjoy viewing hundreds of  
**Antique, Vintage, Classic, Custom and Muscle cars & Bikes.**

Plus shop at market stalls, food trucks & more...

SPONSORED BY



EAGLE HEIGHTS HOTEL





# A SUPER REVAMP FOR MY COUNTRY ESCAPE

After undergoing an extensive \$250,000 refurbishment, popular Scenic Rim fashion and homewares boutique, My Country Escape, has been officially re-opened in Canungra.

A magnet for local and out-of-town shoppers, as well as a growing number of tourists, the stunningly refurbished boutique was jam-packed for the re-opening. Built in 1957, the building is one of Canungra's oldest commercial shopfronts and has hosted a variety of businesses in the last six decades.

Celebrating in style with champagne, canapés, and giveaways, My Country Escape was re-opened with an official ribbon-cutting that included past and present owners, and a VIP guest list of local councillors, brand representatives and business owners.

Owner Michelle Roper-Dennis said the refurbishment was something that she had envisioned for many years.

"It was important to us to maintain the character, ambience and history of the building while also giving it a fresh, modern feel. The team at Hobbs have done outstanding work and we are so proud to share the new My Country Escape with the local community and wider Scenic Rim region," said Michelle.

"We're honoured to have given the old-girl a facelift so she can stand proudly for many more decades to come.

"Shopping locally and buying from the bush is something we've always advocated for – and it's because of the unwavering support of our wonderful locals and surrounding visitors from Scenic Rim, the Gold Coast and Brisbane that we've been able to brave the last year and pull off this dream renovation project. We absolutely cannot thank everyone enough," she said.

My Country Escape stocks a variety of fashion lines, homewares, luxury beauty products, unique gifts and designer jewellery.

Open from 9am to 5pm Monday to Friday, and 9am to 3pm on weekends, it is also home to one of the Scenic Rim's outstanding florists, Lydia's Garden.



*Cheers! Councillor Virginia West joins Michelle Roper-Dennis in a celebratory champagne.*

**Below left:** It was smiles all round as the ribbon was cut to officially re-launch the stunningly refurbished My Country Escape in Canungra. In a nice touch, owners Michelle Roper-Dennis and husband Steve were joined by previous owners of the building, Geoff and Ruth Baldwin, and Sylvian Cameron.

**Below right:** Florist Samantha Dusting will continue to operate her popular Lydia's Garden from within the refurbished My Country Escape.



*Among the many out-of-towners who attended the grand re-opening were Julie Sixsmith, Vicki Thompson and Lesley Light.*







# Brisbane Tube Spider

Brisbane Tube Spider – *Arbanitis longipes*, MacDonald National Park.



Instead of a door, the burrow entrance often has a flanged collar formed by leaves, of which this is an excellent example, with the spider bigger and more fully emerged as it waits to pounce, than I have ever seen. It has a body length of up to 20mm. According to the Queensland Government website, its burrow is up to 20cm long, although [arachne.org](http://arachne.org) cites a depth of 40cm. The species occurs in coastal south-eastern Queensland and just over the New South Wales border.

Peter Kuttner



# TRAVELLING PLACES By Gina Storey

Why is it that every winter for as long as I can remember it rains – not only that, but most families also seem to arrange camping holidays. I have been thinking about driving holidays and exploring our wide-open country. Here are few suggestions.



Fly down to Sydney and pick up a car to explore the South Coast – start in Kiama famous for its blow holes and unspoilt beaches. Spend a couple of nights in Batemans Bay soaking up the seaside vibe and perhaps indulge in a few deliciously fresh oysters. Drive through beautiful forests and quaint towns to Merimbula, where lakes and ocean are separated by white sand fringed with bushland. Head back up the coast to Wollongong for a night where you can discover the bustling food scene, walk forest tracks, or enjoy the stunning beaches. A package including return flights from the Gold Coast to Sydney, seven days' car hire and six nights' 4\* accommodation all from \$1029 per person twin share.

Add on a few extra days with five days' more car hire. Head out to Dubbo for two nights at the Zoofari Lodge with dinner and breakfast included daily. Enjoy two days' admission to the Taronga Western Plains zoo. Join an afternoon or evening safari plus a morning safari tour at sunrise. Head back across the Blue Mountains and stop for two nights including full breakfast. Enjoy a half day 4WD tour including lunch exploring rocks to rainforest with wine tasting. This four-night 4\* Wildlife Glamping and Mountain Viewing journey for \$1399 per person twin share.

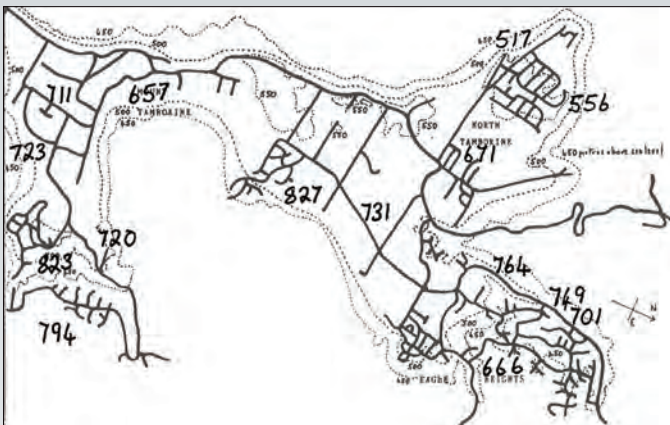
Or fly to Sydney and pick up a car for eight days and wander back up to Queensland. Stay two nights in the Hunter Valley where you can enjoy wine tasting and sampling local produce. Head up the coast to stop for a night in Port Stephens – perhaps take a harbour cruise in search of bottlenose dolphins that often play in these waters. Enjoy a couple of nights in Coffs Harbour exploring the broad sandy beaches, walk the rainforest tracks, enjoy the beachside restaurants in town, hire a bike a cycle the coastal boardwalk or take a canoe adventure along the coast.

Coming closer to home enjoy a couple of nights in Byron Bay – walk up to Australia's most easterly tip at the lighthouse, learn to surf or walk along the beautiful arc of the main beach, indulge in great food at local restaurants or potter around the nearby villages of Bangalow or Yamba. This eight-day holiday including a flight to Sydney, car hire and seven nights 4\* accommodation, all from \$1175 per person twin share.

All prices are an indication of cost – when you book it may be less or more depending upon availability. All itineraries are flexible and are designed to give you inspiration to head off and explore.

Call Travelling Places 07 55451600 or email [travel@travellingplaces.com.au](mailto:travel@travellingplaces.com.au)

# Tamborine Mountain Rainfall March 2021



Mount Tamborine (Fern Street) was on the ABC with 771mm of rain for March. Looking back over the records this was, indeed, a significant amount.

Not since May 1996, when Fern Street got 1178mm, have we had as much in a month. In that rainfall event over a metre of rain fell in the first seven days. On this occasion 556mm was recorded in four days.

This March opened with good rain from a coastal trough. On the 8th and 9th, a front brought good rain and a thunderstorm. On the 14th a trough developed a cloud mass with associated upper atmosphere instability which brought more than 50mm. On the 21st an upper atmosphere trough brought rain and another thunderstorm, and this then coalesced with a deep coastal trough to produce the heavy rainfall event ending on the 23rd. Thankfully most of the rain over the month was not too heavy and didn't cause much damage but will have recharged the aquifers.

The map shows considerable variability in rainfall amounts over Tamborine Mountain. This occurred mainly in the major event.

Mike Russell  
5545 3601



# THE FAMOUS HOT CROSS BUN PUZZLE



**This familiar nursery rhyme conceals a riddle:**

*Hot cross buns, hot cross buns,  
One a penny, two a penny,  
Hot cross buns.  
If you have no daughters  
Give them to your sons!  
Two a penny, three a penny,  
Hot cross buns.  
I had as many daughters  
As I had sons.  
So I gave them seven pennies  
To buy their hot cross buns.*

In other words, hot cross buns come in three kinds: those sold at one a penny, two a penny and three a penny. There are as many boys as girls. The children spend exactly seven pennies on buns.

The puzzle is asking that **if every child gets the same number and kinds of buns, how many buns, and of what kinds, does each child receive?** (Assume that the buns remain whole.)

## 2. A STUDY IN EGGS

**How many eggs can you put in a 6x6 crate such that no row, column, or diagonal has more than two eggs in it? The first two have already been placed, in opposing corners, as shown above. Can you draw me their positions?**

Hint: the answer is more than 10 (including the two already in the crate). **Answers on Friday at [scenicnews.com.au](http://scenicnews.com.au)**

*Sam Loyd was the US's preeminent puzzle 'entrepreneur': in the late 19th century he invented, adapted, illustrated and popularised a huge number of puzzles, which appeared in many newspapers, magazines, advertisements and books. He was perhaps the first person to realise that you could make a living from writing mathematical puzzles.*

© 2021 Alex Bellos – The Guardian

**Rachel Sherrard-Smith**

**02.10.1938 to 29.03.2021**



Rachel Sherrard-Smith has passed away peacefully, aged 82.

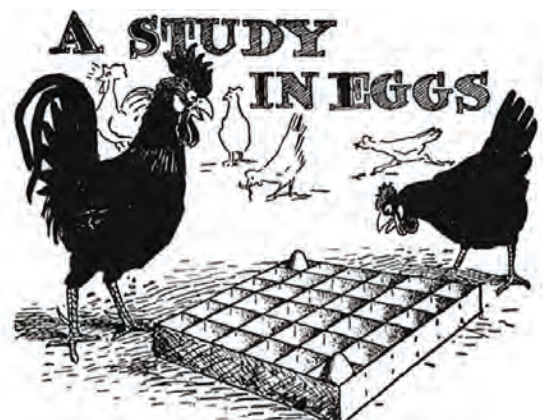
Dearly beloved and devoted wife of John.

Adored mother of David, Mark, John and Jackie. Much loved mother-in-law, grandmother and great grandmother.

Family and friends are respectfully invited to attend Rachel's funeral service to be held at

**St George's Anglican Church,  
2 Dapsang Dr, Tamborine Mountain  
on Saturday 10th of April 2021  
commencing at 2:30pm**

The family requests donations to Neuroscience Research Australia (NeuRA) in lieu of flowers, and we express the utmost gratitude to all the staff at Roslyn Lodge.







# What we do to others, we do to ourselves

We are back from yoga retreat and went almost straight into the extended effect of the three-day Greater Brisbane lockdown.

**What a week! And all this happening just before the Easter weekend.**

The yoga retreat was wonderful - a chance to reflect and take stock of our lives, a chance to have fun and relax with like-minded people, and an opportunity to go into silence. For in silence we learn.

And one of the lessons we took away from our yoga retreat was the idea that the best way you can help others is by working on yourself. This is not a new concept and is the foundation of many spiritual traditions: by investing in your self-development, your spiritual growth and your good health, you'll have lots of time and energy and compassion to help others.

In Buddhism this is sometimes referred to as "lighting up your corner of the world". It refers to the way you can inspire those you meet by the example you set and how this is more powerful than anything else you can do to help others. And unlike the Western focus on personal achievement and material gain, it really means awakening to your true nature and finding true peace within.

A large part of our yoga retreat consisted of breathwork (pranayama). We used the breathwork to manipulate energy around our bodies, to wake up sluggish parts of our bodies and to dip into the silence between the breaths (kumbhaka). According to the yogis the sacred space (kumbhaka) is the space between the in-breath and out-breath. The space between breaths is said to be where we enter back into our natural state, where "I" falls away and we exist as "one" with the world around us. We all share the same breath.

Another concept we explored on yoga retreat was the idea of interconnectedness and our interdependent worlds. We are all woven together deeply, like one great big tapestry. This is even more obvious as we connect to people from distant lands via the internet; truly we are now just a global village. As Chief Seattle stated in 1854:

*Humankind has not woven the web of life. We are but one thread within it. Whatever we do to the web, we do to ourselves. All things are bound together. All things connect.*

Easter, one of the most sacred of the Christian traditions celebrating the resurrection of Christ, gives all of us a chance to take stock of the year behind, the year ahead and what we would like to change. A chance to resurrect the kind of life we wish to lead: a life filled with love, forgiveness, gratitude and this growing awareness of our interconnectedness. What we do to others and to Mother Earth, we do to ourselves.

**Margot Wagner  
Yoga Under the Bodhi Tree**

*(Find and like articles similar to this on my Facebook Page: Yoga Under the Bodhi Tree)*



# ARE YOU FIT TO DRIVE?

As we age many aspects of our health and well-being alter over time. If you still drive, it would be good to consider if you are truly fit to drive. Even on a temporary basis following an illness, it may be safer to allow someone else to take the wheel and chauffeur you to your medical appointments or grocery shopping.

If you have a permanent or long-term medical condition, you could talk to your doctor about your concerns, and the impact your medical condition could have on your ability to drive safely. Health professionals are qualified to check if you are medically fit to drive. If required, they will provide you with a medical certificate reporting on your fitness to drive.

This certificate will either state that you are fit to drive, or that you are able to drive under certain conditions. You must inform Queensland Transport if you have a medical condition that could affect your ability to drive safely. Failure to report medical conditions can be dangerous on the road, and the penalties are high.

Some common conditions that may affect your ability to drive safely include:

- diabetes
- epilepsy
- heart disease and stroke
- arthritis and joint problems
- eye and hearing problems
- sleep disorders
- dementia and Alzheimer's disease
- depression and other mental health problems
- lung disease
- injuries and disabilities.

This is not a complete list, so it would be wise to consult with your health professional. At the same time, ask whether any medications you are taking for your conditions could affect your ability to drive safely. Many medications have side effects that can affect your responses putting you, other road users and pedestrian traffic at risk.

TMCCA provides transport services for clients to go to their medical appointments and for reasons of individual social support. If you need more information feel welcome to call us on 5545 4968.



**Ian MacAllan**  
**LAWYER**  
5545 4303

- Wills
- Probate
- Estates
- Enduring Power of Attorney
- Advanced Health Directives



40 Southport Ave Eagle Heights 4272





CHEF DYLAN'S  
**Gourmet Food Co.**

# food for thought

with **DYLAN GITTOES**

## MINESTRONE

**With all this rain, I've been feeling like eating hearty soups. It's a wonderful feeling to sit at the table with a big bowl of steaming soup, a nice glass of red wine, the smell of freshly toasted bread still lingering in the air, and the pitter patter of rain softly falling on the tin roof.**

This is one of those recipes you can make and let it sit in the fridge for a few days to develop the flavours. It's an excellent dinner and can be reheated in a matter of minutes, or why not pour some into a flask and take it to work with you for a hearty, healthy lunch. There is no real set recipe for minestrone when it comes to the vegetables. You can just use whatever you have in the fridge. I also mix up the beans, I love butter beans, but red kidney or borlotti beans are also wonderful. Add some Gaucho mix to this soup for a nice herb kick to really tie the ingredients in together.

As a teenager I would often spend rainy days at school in the library during breaks because books have a magical ability to transport you to other worlds. I would spend hours looking at the paintings of the Teenage Mutant Ninja Turtle superhero namesakes of Michelangelo, Raphael, Leonardo and Donatello and my favourite the Primavera by Botticelli. I would touch the pages and imagine what it must be like to see them in the flesh.

Fast forward eight years and I'm standing in line at the Piazza Della Signoria for the Uffizi Gallery in the historic centre of Firenze. I look up at the severed head of Medusa freshly cut by Perseus and shake my head in amazement at the realism of the bronze sculpture. Once through the doors I head straight to the painting that I have come here to see, the Primavera. As I reach the third floor, I turn into a small



dimly lit room and I see it. There are about 20 people all vying for a position; I muscle my way through (something you learn quickly in Italy).

With my nose 3cm from the masterpiece, I can smell the age of it, and as I look closely, I can make out each brushstroke and I'm transfixed. I imagine Botticelli's hand dipping the paintbrush into the paint and masterfully stroking the canvas. What a gift. I'm blown away that I can see and smell the original painting that was in my school library all those years ago. As I move on and take in the rest of the art, I'm amazed that a kid from a blue-collar working-class family can end up here, feasting his eyes and spirit with the art of the masters. Indeed, dreams can come true.

### INGREDIENTS

- 3 cloves of garlic
- 1 red onion
- 2 carrots
- 2 sticks of celery
- 1 zucchini
- 1 small leek
- 1 large potato
- 1 x 400g tin of butter beans
- 4 rashers bacon
- olive oil
- 2 tbs Gaucho mix
- 1 fresh bay leaf
- 2 x 400g tins of chopped tomatoes
- 1 litre of organic vegetable stock
- 1 large handful of seasonal greens such as silverbeet, kale, or beetroot leaves
- 100g shell pasta
- ½ a bunch of fresh basil,
- Parmesan cheese

### METHOD

1. Peel and finely chop the garlic and onion. Trim and chop the carrots, celery and zucchini into 2cm chunks, then chuck the vegetables to a large bowl.
2. Cut the ends off the leek, quarter it lengthways, wash it under running water, then cut into 1cm slices. Add to the bowl.
3. Peel then 1cm dice the potato. Drain the butter beans.
4. Finely slice the bacon.



5. Heat 2 tablespoons of oil in a large saucepan over a medium heat. Add the bacon and fry gently for 2 minutes, until crispy-ish.
6. Add the garlic, onion, carrots, celery, courgette, leek, and Gaucho and cook slowly for about 15 minutes or until the vegetables have softened, stirring occasionally.
7. Add the potato, butter beans and chopped tomatoes, then whack in the vegetable stock. Stir well, cover with a lid and bring everything slowly to the boil, then simmer for about 30 minutes or until the potato is cooked through.
8. Remove and discard any tough stalk bits from the greens, then roughly chop.
9. Make sure potato is cooked by piercing with a knife.
10. Add the greens and pasta to the pan and cook for a further 10 minutes or until the pasta is al dente.
11. Add a touch more stock or water to loosen up, if needed.
12. Roughly chop the basil leaves and stir through. Season with sea salt and cracked black pepper.
13. Serve with grated Parmesan alongside a slice of toasted or fresh bread and a glass of Chianti.



# FINDING LOST WAGES - IT IS SUPER SIMPLE



**The Australian Tax Office (ATO) has estimated that around \$55 million in hard earned wages of local residents is waiting to be claimed, in the form of lost and unclaimed superannuation.**

Federal Member for Wright, Scott Buchholz, said local workers may have lost or unclaimed super if they have changed their name, moved home or jobs or even simply forgotten to update their details with their super fund.

“When we talk about lost superannuation, we’re referring to those accounts that have become inactive, with no payments or where superannuation funds are unable to contact the fund member and account holder.

“By law, the fund is required to transfer certain accounts to the ATO, which then becomes ‘unclaimed super money’.

“The upside to the ATO taking on that inactive balance, is unlike super funds, the ATO does not charge fees, and thanks to reforms passed by the Morrison Government, proactively consolidates any unclaimed super into an eligible, active super account where possible.

“But we know that this money is far better off in the accumulating accounts of workers. Already our reforms have seen \$7 billion sent back to workers,” Mr Buchholz said.

According to ATO data, there is approximately \$55 million in unclaimed super across the electorate of Wright, money that workers may not even know they are missing.

Mr Buchholz said workers could claim any lost super by logging into MyGov and checking for lost super with the ATO, in just a few simple clicks.

A total of \$13.8 billion is waiting to be claimed, in the form of lost and unclaimed superannuation.

The Government’s Protecting Your Super reforms have resulted in the ATO proactively reuniting more Australians with their lost and unclaimed super. Since November 2019 almost 3.3 million accounts worth almost \$4.3 billion have been proactively reunited and paid out to their rightful owners.

Further information about lost and unclaimed superannuation is available on the ATO website at [www.ato.gov.au/About-ATO/Research-and-statistics/In-detail/Super-statistics/Super-accounts-data/Lost-and-unclaimed-super-by-postcode/](http://www.ato.gov.au/About-ATO/Research-and-statistics/In-detail/Super-statistics/Super-accounts-data/Lost-and-unclaimed-super-by-postcode/)

**Scott BUCHHOLZ MP**  
Federal Member for **Wright**

*Working for Wright*

- 🏠 21 William Street, Beaudesert QLD 4285
- ☎ 07 5541 0150
- ✉ scott.buchholz.mp@aph.gov.au
- 🌐 scottbuchholz.com.au
- 📘 SBuchholzMP

Authorised by S. Buchholz, Liberal National Party of Queensland, 21 William Street, Beaudesert QLD 4285.

## ACS Engineers

CIVIL | ENVIRONMENTAL | PROJECT MANAGEMENT

07 5541 3500

*Providing Professional Engineering & Civil Design Services to the Scenic Rim*

admin@acsengineers.com.au



[www.acsengineers.com.au](http://www.acsengineers.com.au)



# CLASSIFIEDS

**Bookshop & Art Gallery** - Under the Greenwood Tree. Open 5 days 10 - 5. Closed Tuesday and Thursday Home deliveries 7 days. Book orders welcomed. 92 Main Western Rd Nth Tamb Ph.0424 586 066 P

**Gardening, Mowing, Property Maintenance** by friendly, reliable long-term mountain resident. No.1 Property Maintenance. Call Phil 0476 257 045 P

**Music Lessons** - Bass, guitar, piano. All ages. Have fun & online lessons available now. Ph Craig or text 0478 075 642 P

## GRAPHICS & TUITION

**GRAPHIC DESIGN/ILLUSTRATION SERVICE & TUTORING**



**GRAPHICS SERVICE:** Business Startup – logos, business cards, letterheads, leaflets, stickers, etc. Quotes for design and printing (**all printing done locally by Coomera Print Hub**)

**TUTORING:** Learn the fundamentals of Adobe Illustrator and Photoshop. Helping with presentations, portfolios, print setup etc.

**COST:** \$50 per hr. For more info Call Heather on 0415 549 522 or email heather.dale@patchworkdog.com Examples on www.patchworkdog.com.



## Scenic News

- Get your ad in front of more than 20,000 readers each week
- Free online exposure, and online advertising opportunities

**Call or email**

**0417 238 238**

advertising@scenicnews.com.au



## SIGNS

### GARAGE SALE SIGNS

Stand out from the crowd with attractive, professional-looking signs for YOUR Garage Sale. (spike/stand included) Signs are free to use, but require a \$10 deposit per sign (refunded when you return them). Please inquire on 5545 5000.

## POSITION VACANT

**Shop Assistant for Bakery**, Suit Year 12 school leaver or university student. Casual hours, weekend and weekdays. Call 07 5545 4011 Send Resumé to Eagle Heights Bakery on [facebook](#)

## HOUSE CLEANING

Quality work and service. Call 0407 117 824



**Yoga Under the Bodhi Tree – LIVE YOGA CLASSES:** Mon 9.30am Moriarty CC, Canungra. Wed 6pm Canungra Wellness Centre, Kidston St, Canungra. Tues 9.30am, Fri 8am and Sat 9.30am Zamia Theatre, Main St, Tamborine Mountain. **ONLINE YOGA CLASSES:** Tues 6pm, Wed 9.30am, Sat 7.00am. For Online Classes text or email me: Margot 0428 137 391 or yogaunderthebodhitree@outlook.com.

I will send you an email with a link. Very simple, very low tech. Come and join us! Hatha, Nada and Tantra Yoga. Contact: Margot Y.A (Australia) 0428 137 391. Transform your Life with Yoga.

# TRIVIA

Naturally...



1. Sulphur dioxide causes which particular problem for the environment?
2. Which class of animals can live both in and out of water?
3. Which branch of science is concerned with the study of all living things?
4. To which order of insects do butterflies and moths belong?
5. What is the term for the highest order of mammals?
6. Silkworms prefer to eat the leaves of which bush?
7. What was the title of Charles Darwin's book regarding his theory of evolution?
8. Dian Fossey studied what kind of animal in Rwanda?
9. Of which kind of fruit is mirabelle a variety?
10. What is the main constituent of glass?
11. What does a pyrophobe fear?
12. What is the largest living thing yet discovered on the planet?
13. What is the fruit of the blackthorn tree?
14. Where would you find a red thread worm?

**ANSWERS PAGE 29**



# BUSINESS DIRECTORY – WHO TO CALL

## ACCOUNTING

**HALL HANNEFORD**  
 CHARTERED ACCOUNTANTS  
**TAXATION / BAS RETURNS**  
**BUSINESS ADVICE • STRUCTURE SETUPS**  
**SELF-MANAGED SUPERANNUATION**  
**TAX PLANNING • BOOKKEEPING**  
 Shop 3/15 Main Western Road,  
 Tamborine Mountain  
 PH: 07 5545 2588  
 www.accountingonthemountain.com.au

**Eagle Taxation**  
 Accounting and Taxation Services; Tax Returns;  
 BAS Statements; DIY Super and Auditing; ABN  
 Applications; Tax Planning and Structure  
 Advice; Non-Profit and Business Audits;  
 End-of-Life Planning and Document Preparation;  
 Commercial Agreements; Xero Cloud Accounting  
**36 Southport Ave, Eagle Heights**  
 ☎ (07) 5545 4458  
 📧 office@eagletax.com.au

## ACUPUNCTURE

**KMA ACUPUNCTURE**  
 Kylie McCormack-Anthony  
 Your local practitioner  
**Boyland & Ormeau**  
**0411 116 579**

## AIR CONDITIONING & REFRIGERATION

**+45 Years**  
**TAMES**  
**TAMBORINE MOUNTAIN ELECTRICAL SERVICES**  
 Air Conditioning Service & Breakdown  
 Sales and Installations  
 at Competitive Pricing  
**Call Now 07 5545 7777**  
*Servicing our customers for 45+ years*  
 Licence No. 69488 Arctick AU3560

**EZY Freeze**  
  
 • Domestic Air-Conditioning  
 • Commercial Air-Conditioning/  
 Refrigeration  
**Call Steve**  
**0431 697 302**  
 Best Rates - No Call Out Fee

## AIR CONDITIONING & REFRIGERATION

**EMIRG SERVICES**  
**AIR CONDITIONING**  
**COMMERCIAL REFRIGERATION**  
**& MECHANICAL SERVICES**  
**BRENDAN GRIMES 0419 009 643**  
 brendan@emirgservices.com.au emirgservices.com.au

## ARBORIST

**MOUNTAIN TREES**  
**NICK ROUTLEDGE**  
 0438 176 775  
 Qualified Arborist  
 mountaintrees@live.com.au  
*Professional Tree Services*

## AUTOMOTIVE REPAIRS

**TAMBORINE MOUNTAIN Auto Clinic**  
**Jason Bowles**  
 • Logbook Servicing All Makes Incl Euro  
 • Specialist in Brakes  
 • All Mechanical Repairs **RACQ**  
 • Small Electrical Repairs  
 • Sublet R.W.C & Air Conditioning  
 41 Main St Nth Tamborine **Ph: 5545 1214**

**On The Road** EST. 2002  
**AUTOMOTIVE REPAIRS**  
 • Mobile Repairs, Logbooks & Servicing  
 • RWC Safety & LPG certificates  
 • Cars, Trucks, Trailers & Floats, Farm Eq't  
 • Light & Heavy Diesel Repairs  
 • COI & Measure Ups, Mod. Plates  
 • Scan Tool Diagnostics  
 FULLY EQUIPPED WORKSHOP AT TAMBORINE  
**SEAN 0409 291 053**  
 ACN 111 041 751

## BLINDS & CURTAINS

**TAMBORINE BLINDS AND AWNINGS**  
 ✓ Awnings ✓ Blinds  
 ✓ Security & Flyscreens  
 ✓ 25 Years Industry Experience  
**RICHARD m: 0405 631 655**  
**KENT h: 5545 0057**

## BOOKKEEPING

**Innovative BEAN COUNTING**  
 BAS and Bookkeeping Services  
*Focus on your business while we count your beans!*  
 XERO & MYOB Certified Advisor, QuickBooks, Receipt Bank & Hubdoc partnered. 20 Years of experience!  
 E: info@ibcounting.com.au  
 W: www.ibcounting.com.au  
 P: 07 5543 4830  
 M: 0400 395 805  
 IPA INSTITUTE OF PUBLIC ACCOUNTANTS  
 AUSTRALIAN BOOKKEEPERS NETWORK  
 AUSTRALIAN BOOKKEEPERS ASSOCIATION  
 BAS agent 25894697

## BRICKLAYING

**HOPE BRICKLAYING**  
 Brick and Block Work • Cottage  
 • Commercial Construction  
 • Retaining Walls and Fences  
 Tamborine Local  
 QBCC Lic 1302284  
**0449 622 639**  
 Jhbricklaying@hotmail.com

## BUILDERS

**AGENCY UNO PTY LTD - Builder**  
 LIC # QBCC 1203987  
 Custom homes, alterations,  
 renovations, extensions and decks.  
 Advise and quote.  
**Call: Simon**  
**Mb: 0422 532 397**

**CRAMP BUILDERS** Pty Ltd  
 Architectural Homes Renovations Extensions Maintenance Commercial Works  
 Nick Cramp - 0437 017 297  
 Rick Cramp - 0407 701 875  
 E: info@crampbuilders.com.au  
 ACN 137 984 715 QBCC Lic. 1177904

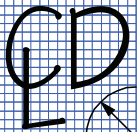
**tbi** TOTAL BUILDING IMPROVEMENTS  
 All Aspects Of Building & Renovations  
 • RENOVATION SPECIALIST  
 • BATHROOMS  
 • KITCHENS  
 • FULL INTERNAL  
**Edward Odisho**  
 mob: 0418 788 029  
 QBCC LIC - 15077381  
 email: totalbuilding@gmail.com

**DIETZEL HOMES**  
 Building & Renovations  
**Adrian Dietzel**  
 Builder  
 0407764715  
 QBCC LIC 1174335  
 dietzelhomes@gmail.com  
 www.dietzelhomes.com




# BUSINESS DIRECTORY – WHO TO CALL

## BUILDING DESIGN



**CAMERON DESIGN LOGIC**

Ian Cameron  
0405 285 341  
Adam Cameron  
0414 807 265  
camdunpl@gmail.com  
QBCC 15189980

**BUILDING DESIGN & PLAN DRAFTING** 

## CAR DETAILING

**CAR DETAILING – MOBILE SERVICE**

**Ian Garvie**  
JP (Qual)  
Qld Water Comm. & Commerce Qld  
REGIST. WATER EFFICIENT OPERATOR No. 2238



**0409 962 348**  
Health Regulations strictly adhered to

## CARPENTRY

**AGENCY UNO PTY LTD - Carpenter Builder**  
LIC # QBCC 1203987

Formwork, framing, fix outs, pitched roofs, staircases, decks, railings, custom hardwood bench tops, renovations.

Advise and quote.  
**Call: Simon**  
**Mb: 0422 532 397**

## CHIMNEY CLEANING

**SOOTY'S CHIMNEY CLEANING SERVICE**  
Dust-free cleaning - all areas

sootyschimney@optusnet.com.au  
www.sootyschimneycleaning.com.au



**0438 733 579**

## CLEANING

**EAGLE HEIGHTS CLEANING SERVICES**

Commercial Cleaning  
House Cleaning ~ Weekly/fortnightly  
Windows • Bond Cleans  
Carpet Cleaning

**MOBILE 0400 452 054**  
*Cleaning the Mountain since 2001*

## Answers to TRIVIA from page 27

1. Acid rain
2. Amphibians
3. Biology
4. Lepidoptera
5. Primates
6. Mulberry
7. *The Origin of Species* by Means of Natural Selection
8. The mountain gorilla
9. Plum
10. Sand
11. Fire
12. A honey mushroom, over 3 miles long (in Oregon)
13. Sloe
14. On a seashore

## COMPUTERS



**GRANT I.T. SERVICES**

MasterCard  
VISA  
efpos

**0410 559 136**  
**CAMRON GRANT**  
grant.it.services@gmail.com

Professional & reliable  
**ON-SITE TECH SERVICE**  
for your home or business

PC, Apple or Smart Devices - Repairs - Installations - Upgrades - Networking - Virus Removal & More

**LOCAL & SAME DAY RESPONSE**



**COMPUTEX SOLUTIONS PTY LTD**

Onsite in your Home or Business - Installations - Repairs  
Upgrades - Virus Removal - Networking - Backups & more  
Supporting PCs / Macs / Tablets / Smartphones

call Drew Haldane **0414 014 054**

**For all your computer needs**

## DENTAL PRACTICE

**DENTURE CLINIC**



**Joe Russell**  
Registered Dental Prosthetist

**OPEN**  
for all your denture requirements

www.tamborinedentures.com  
**5545 3128**

Mon-Fri Every week (excl. holidays)  
After-hours appointments available

Shop 10/17 Southport Ave  
Tamborine Mountain

## CONCRETE

**NDC CONCRETE**  
TAMBORINE MOUNTAIN

Specialising in:  
• Driveways  
• Patios  
• Shed Slabs  
• Pool Surrounds  
• Concrete Benchtops

QBCC lic. 15131788

**NATHAN CUMBERS 0481 387 007**

**Next DEADLINE:**  
**April 9, 2021**

## DRESSMAKING

**JULIA SINGH**  
FASHION AND TEXTILE DESIGNER

- DRESSMAKING
- PATTERNMAKING
- WORKSHOPS
- ALTERATIONS

TAMBORINE MOUNTAIN  
**0467 398 872**  
HSINGH@WESTNET.COM.AU



## DRIVING LESSONS

**TAMBORINE DRIVING SCHOOL**

**0431 857 356**

**Nicola Durkan**  
Qualified Instructor



*Pickup school, work, home*

**RED LINE** 

TAMBORINE MTN DRIVING SCHOOL

Accredited Driving Instructor  
Long time local resident

Suzuki Swift Automatic  
Free keys2drive lesson

**Phone Grant 0478 225 853**  
Member Aust Driver Training Association

## EARTH MOVING

**COLES earthworks** 

Excavators  
Bobcats  
Trucks

- postholes • pads • trenching • tank holes
- clearing • burnoffs • landscaping

Specialising in:  
**DRIVEWAYS**

**Ph: 5545 1979**

Making the earth move for you on Tamborine Mountain



## EARTH MOVING

**FREE QUOTE CALL 0413 941 172**

30 YEARS' EXPERIENCE IN ALL ASPECTS OF EARTHMOVING



**DANNY'S DIGGERS**

**Bobcat & Excavator Hire**

## GRAYS EARTHWORX

5 tonne Excavator, 10 m<sup>2</sup> Tipper

All Excavations, Postholes,  
Rock Walls, Sand, Soil, Gravel  
Reliable - Good Rates

**PH: GRAY 0431 243 810**



# BUSINESS DIRECTORY – WHO TO CALL

## ELECTRICAL

### Bob's Services

Gary Hamblin  
Licenced Electrician  
25 Years Experience

0413 278 743

thezoo5@bigpond.com



Lic. No. 71041



### TAMBORINE MOUNTAIN ELECTRICAL SERVICES

Competitive Pricing and  
Guaranteed Work from your  
local Master Electricians

Call Now 07 5545 7777

*Servicing our customers for 45+ years*

Licence No. 69488

Arctick AU3560



ALL YOUR ELECTRICAL NEEDS FOR  
RESIDENTIAL & COMMERCIAL

~ COMPETITIVE PRICING ~

Electricians that provide fast, tidy,  
professional service

- New builds
- Renovations
- Upgrades
- Air conditioning  
Installations



Call us on 1300 153 726  
admin@knightsselectrical.net.au

Knights Electrical Contracting (QLD) P/L \* Licence No: 65556 (QLD)

### FIVE STAR SECURITY & ELECTRICAL

Lic. No. 59907

### ELECTRICAL CONTRACTORS

Domestic • Commercial • Repairs  
• Renovations • Upgrades

Phone: 0418 715 380

### SKS Electrical Pty Ltd

Lic No. 73960

Stuart Spalding

0413 435 708

skselectrical11@hotmail.com



Michael Ruttle

0422 882 719

Ruttle@interlectrics.com

Lic: 100994

Electrical Installations  
New & Renovation  
Phone and Data  
Fair Prices &  
Professional Service  
**Local to the Mountain**

## ENGINEERS

### ACS Engineers

CIVIL | ENVIRONMENTAL | PROJECT MANAGEMENT

07 5541 3500

Providing Professional Engineering &  
Civil Design Services to the Scenic Rim

www.acsengineers.com.au

admin@acsengineers.com.au

## FIREWOOD

### TAMBORINE MT FIREWOOD SUPPLIES

\* FREE DELIVERY

\* SEASONED TIMBER

\* PROMPT SERVICE

PH: 0418 980 862

Adam



### Aged Western Red Ironbark

From \$180 m<sup>3</sup>

Phone Wayne Kiehne 0419 768 959

### TD McNEILL QUALITY FIREWOOD

Split, Dry 100% Ironbark by the Tonne

18 Years in Business Locally

When Only the Best Quality will Do!

Phone Trent 0457 244 525

## FITNESS & GYM

JOIN YOUR LOCAL GYM

ACCESS AVAILABLE 24/7

Personal Training & Classes

Follow Facebook@MainFitness

OR www.mainfitness.com.au

8/39 Main St North Tamborine

5545 4774

24/7

MAINFITNESS



TRIATHLON CLUB

16 BEACON ROAD,  
TAMBORINE MOUNTAIN

24/7

Community Gym  
for all levels of fitness

Contact Natasha  
if you are interested  
in joining.

Mobile: 0408 739 844

## GARAGE DOORS & GATES

### Adept Garage Doors & Gates



SPECIALISING IN:

Servicing, Repairs, Maintenance,  
Installation, Automation & Remotes.  
Quality Service, Workmanship & Products

24/7 Emergency Repairs

Ph: 0401 363 757

www.adeptgaragedoors.com.au



## GAS SUPPLIES



CALL FOR AMAZING WINTER SPECIALS!

- No setup fee
- Friendly service
- Competitive prices
- Talk to a person
- Same or next day  
delivery



PH 3800 2080

PH 5548 7100

plusgas.com.au

### Joyan Household Gas

YOUR FRIENDLY LOCAL SUPPLIER

We supply and deliver household gas cylinders  
No Rental Charges No Lock In Contracts  
No Delivery Fee



Call John 0424 486 986

## HAIRDRESSING



Hair by Melissa

• LADIES • MENS • CHILDREN  
• Cutting • Colouring • Styling

Complete In Home Hair Service  
Stuck Indoors - I Come to You

0416 825 465

## HANDYMAN



Can-Do Handyman Services  
Allan Pyne

Commercial – Domestic  
Home & Building Services

EVERYTHING IS POSSIBLE

From termite damage to

welding repairs & fabrications

Need it done properly? Call ...

0403 067 771 allanspyne@gmail.com

### Craig the Handyman

For any odd jobs you have wanted done

- Affordable • Reliable • Quality work
- 30 Years Experience

Not your average handyman!

0478 075 642





# BUSINESS DIRECTORY – WHO TO CALL

## HARDWARE



**TAMBORINE VILLAGE TRADERS**  
 HARDWARE – PLUMBING – PRODUCE  
 SADDLERY – GARDENING – PAINT  
 M-F 7.30 to 5.30 Sat 7.30 to 3pm Sun 7.30 to 1pm

Ph: 07 5543 8822 Christina  
 Fax: 07 5543 8866 5 Leach Road  
 Email: christina@tamborinetraders.com Tamborine QLD 4270

## LANDSCAPING & MOWING

**Affinity Landscapes**  
*Is your garden ready for spring & summer entertaining?*  
*Would you like to attract wildlife?*  
*Do you want envious friends & neighbours?*

Local horticulturalist & lic'd structural landscaper

- Design • Water features • Stonework • Planting
- Paving & retaining walls
- Contemporary, native & formal gardens

**MOB: 0411 805 589 – QBCC1115404**



**LANDSCAPE SUPPLIES**  
 NOW BIGGER, BETTER, CLOSER!  
**5545 3390**  
 Dingo Hire with Attachments

Large blocks for retaining walls or heavy-duty control solutions  
 bagged fertiliser \* bagged mulches \* crusher dust \*  
 drainage gravels \* roadbase \* decorative gravels \* soils  
 \* mulches \* concrete blend \* rocks \* sleepers \* stepping  
 stones \* sands, barks \* turf

PAW OR DELIVERY **PLUS MUCH MORE** Discount for 6m<sup>3</sup> loads  
**85 Hartley Road, Nth Tamborine**  
**TUESDAY – SATURDAY 9AM–3PM**



**TAMBORINE TURF**  
 (Est. 1966) Landscaper & Laying Service Available

Growers & Suppliers of:  
 • Wintergreen Couch • Buffalo Grass • Kikuyu Turf

Farm Pick Up or Delivered – Inspections Invited!  
 (Weekend pickup must be ordered by noon Friday)  
 tamborineturf.com.au • tjyore@optusnet.com.au

**Tom 07 5543 6133 • Office 0423 924 692**

**Dependable Mowing**  
 Ride On Mower Specialists  
 Ph Ash Now for a free quote  
**0430 110 055**

We've Got Your Lawn Covered! Small to Large Acreage  
 Mowing/Mulching/Catching  
 Dethatching/Aerating/  
 Overseeding  
 Steep Slope Slasher/Mower  
 Fast Commercial Mowers  
 Fully Insured. Your One Stop  
 Professional Lawn Care Service

## LOCKSMITH



**Paul's Locksmith Service**  
 Residential • Commercial  
 7am - 7pm • 7 Days A Week

- ✓ Over 35 Years of Experience
- ✓ Master Locksmith Since 1989
- ✓ Prompt & Reliable Professional Service at Sensible Prices
- ✓ Scenic Rim Resident

**Call Paul 0439 355 411**  
 paulslocksmithservice.com.au

## MOWING & GARDENING

**GREENWOOD PROPERTY MAINTENANCE**

- All lawns – small blocks to acreage
- Hedge trimming
- Brushcutting
- Rubbish removal
- Gutter cleaning etc

**PHONE JOHN 0431 953 126**



## PAINTING



**ALL SURFACE PAINTING P/L**

- Re-paint Specialists
- Specialise in Timber Restoration
- New Projects Welcome

**JOHN RYAN**  
**M: 0414 377 474**  
 E: allsurfacepainting1@gmail.com

**YOUR LOCAL INTERIOR & EXTERIOR PAINTER**



**THOBS PAINTING SERVICES**  
 Phone Thobs **0455 308 318**  
 thobspaintingervices@gmail.com  
 OBLIGATION FREE QUOTE

Domestic Commercial Industrial Body Corp No Job Too Small

## PAINTING



**VINCENT'S PAINTING SERVICES**

- Interior/Exterior Painting
- Roofs & Decks

QBCC 1090914  
**5545 0098 or 0409 879 184**

*Painting Contractors*

**RESIDENTIAL & COMMERCIAL**  
**Gary 0438 175 069**  
 Email: garywferigo@hotmail.com  
**FREE QUOTES • PROMPT SERVICE**



QBCC 1001805

## Advertising?

**0417 238 238**

**Call or email**

advertising@scenicnews.com.au

## PAINTING



**Lowrie Painters**  
 QBCC: 1024341  
 Interior – Exterior  
 Quality finish – Mountain Local

**Call Matt for a competitive quote**

**0422 948 753**

lowriepainters@gmail.com painter-goldcoast.com.au

## CJR Queensland

Painting and Maintenance Services  
**Colin Rose**  
 0414 818 318  
 cjrose@bigpond.net.au

## PANEL BEATER

**ALLAN HAYES**  
 TAMBORINE MOUNTAIN  
 PANEL & PAINT  
**PH: 5545 2319**  
**Mob: 0419 735 874**  
 Private and insurance work  
 Total Car Care

FREE QUOTES WINDSCREENS  
 PICK UP BRAKES  
 DELIVERY RUST FOR R.W.C.



1 HAYES RD  
 OFF TAMBORINE OXFENFORD RD

## PEST CONTROL

**EDGE PEST CONTROL**

- Termite inspections
- Termite treatments and
- General pest control services



QBCC Lic. 1215067 Danny  
 Pest manag't lic. Pmt-0-11839  
 25 years in the industry **0421 642 273**



**EAST COAST building & pest**  
 Your local, trusted, family owned and operated team

- Building and Pest Inspections
- Termite Inspections
- Termite Management
- Pest Control



**1300 910 917**  
 admin@eastcoastbuildingandpest.com.au  
 www.eastcoastbuildingandpest.com.au



# BUSINESS DIRECTORY – WHO TO CALL

## PEST CONTROL

### Safe Effective Treatment of ALL PESTS

Termite inspections using the latest technologies: Thermal Image Camera, Termatrac etc., and all aspects of Termite prevention and eradication.



**END-A-PEST**

Exterminators

Over 30 Years' Exp.

Fully Licenced & Insured QBCC 15023710

5545 3957 or 0407 590 790

## PHYSIOTHERAPY

**Physiotherapy** Tamborine Mountain  
& Sports Injury Clinic

Gary Brooks

tel: 07 5545 0500

16-18 Main Western Rd, Tamborine Mountain

## PHYSIQUE

### PHYSIOTHERAPY



2/10 Main Street, PO Box 102  
North Tamborine, QLD 4272

5545 1133

www.physiquehealth.com.au

## PICTURE FRAMING & PRINTING

vikingframer.com



**Viking Framer**

Picture Framing • Art Gallery • Printing  
vikingframer.com

(07) 5545 2402 0449 250 545

## PLASTERING

Gyprock, ornate & suspended ceilings,  
fancy cornices, ceiling roses.

All Aspects of Trade

Phone **BRETT CLEARY**

**5545 0115**

## PLUMBING

**ALL-WAYS PLUMBING** Lic No 745184

**ANGEL'S**

Specialising in:-

- Maintenance
- Plumbing
- Roofing
- Draining
- Gasfitting

Ph: Dave Angel at Nth Tamborine  
Ph: 5545 2369 all hours  
Mobile No: 0419 677 008

**COBRA PLUMBING**  
& Drain Clearing P/L QBCC 73572

Maintenance Services

Renovations • No Job Too Small

Mark: 0419 655 802 Local Resident

## PLUMBING

### Hot Water Install & Repairs Solar, Electric & Gas.

Trust the family owned local  
Best service & price!

Ph: 5539 6820



**TODD'S**  
PLUMBING  
& ELECTRICAL

www.toddsplumbing.com.au

**PLUMBER** • Leak Detection  
**GASFITTER DRAINER** • Blocked Drains  
Tamborine Mountain Local • Renovations  
• CCTV Drain Camera

Call Matt  
**ADEPT** 0425 706 949  
PLUMBING & GAS QBCC: 1166432

Master Plumbers' Association of Queensland

VISA MASTERCARD

## PUMPS



For sales, service & advice  
you can trust ...

House | Filtration | Irrigation | Bore

PHONE 5545 0555 and 5545 4100

We supply & repair PUMPS

- Bore pumps • House Pumps
  - Pool Pumps • Grey-water Pumps
- IRRIGATION & WATER SPECIALISTS

Sales & service  
38 Main St, Nth Tamborine  
(2 doors from POST OFFICE)

## REAL ESTATE

**Professionals** Serendipity Real Estate



**Elizabeth Stirling**  
0400 449 978

elizabeth.stirling@professionals.com.au

5545 5000 10-12 Main Street, Tamborine Mountain  
www.ProfessionalsTamborineMountain.com.au

**Professionals** Serendipity Real Estate



**Team Erin & Monique**  
0427 078 757 0429 004 840

erin.mcgee@professionals.com.au  
monique.clemens@professionals.com.au  
5543 6444 2205 Beaudesert-Beenleigh Rd, Tamborine  
www.ProfessionalsTamborine.com.au

## REAL ESTATE

**Professionals** Serendipity Real Estate



**Team Paul, Heleen & Ton**

0419 249 271 0424 591 012

0424 591 011

5545 5000, 10-12 Main St, Tamborine Mountain  
www.ProfessionalsTamborineMountain.com.au

**Professionals** Serendipity Real Estate



**Linda Hogan**  
0414 300 558

linda.hogan@professionals.com.au

5545 5000 10-12 Main Street, Tamborine Mountain  
5543 6444 2205 Beaudesert-Beenleigh Rd, Tamborine

**Professionals** Serendipity Real Estate



**Diane Pihl**  
0424 653 316

diane.pihl@professionals.com.au

5545 5000 10-12 Main Street, Tamborine Mountain  
www.ProfessionalsTamborineMountain.com.au

**Professionals** Serendipity Real Estate

SARAH AMY KYLIE



0429 001 013 0474 315 000 0428 654 000

Sarah Lewis Amy Orr Kylie Edwards

10 - 12 Main Street, Tamborine Mountain, 4272  
www.ProfessionalsTamborineMountain.com.au

2205 Beaudesert-Beenleigh Road, Tamborine, 4270  
www.ProfessionalsTamborine.com.au

07 5545 4000 Mountain Office 07 5543 6444 Tamborine Office

**Property Management**  
The best team to manage your investment



# BUSINESS DIRECTORY – WHO TO CALL

## REAL ESTATE



**Team Deb & Mark**  
 0409 210 362 0407 292 036  
 mark.inwood@professionals.com.au  
 5543 6444 2205 Beaudesert-Beenleigh Rd, Tamborine  
 www.ProfessionalsSerendipityRealEstate.com.au



**Oliver Edwards**  
 0422 500 613  
 oliver.edwards@professionals.com.au  
 5545 5000 10-12 Main Street, Tamborine Mountain  
 www.ProfessionalsSerendipityRealEstate.com.au



**Michael Kratzke**  
 0434 718 162  
 michael.kratzke@professionals.com.au  
 5545 5000 10-12 Main Street, Tamborine Mountain  
 www.ProfessionalsSerendipityRealEstate.com.au



**Cherie Todd**  
 0411 466 442  
 RayWhite  
 Shop 6,  
 9-13 Main Western Rd  
 North Tamborine  
 07 5545 1303  
 cherie.todd@raywhite.com  
 www.raywhiteruraltamborinemountain.com.au

## REAL ESTATE



**Louis Bartle**  
 0491 642 980  
 RayWhite  
 Shop 6,  
 9-13 Main Western Rd  
 North Tamborine  
 07 5545 1303  
 louis.bartle@raywhite.com  
 www.raywhiteruraltamborinemountain.com.au

**EXCLUSIVE SALE PROPERTIES**  
 Thinking of selling?  
 call me  
 Now  
**KONRAD GALLAHER**  
 0435 99 66 44  
 LOCAL Independent Agent  
**TESTIMONIALS**  
 We are extremely grateful for his excellent work and are more than happy to strongly recommend Konrad, Lewis and Liz.  
 Many thanks Konrad for not only being our agent, but also for becoming a kind friend, Paul and Joy.  
**30 + YEARS LOCAL RESIDENT**  
**30 + YEARS SALES EXPERIENCE**  
 konrad@exclusivesale.com.au  
 exclusivesale.com.au

**Harcourts Scenic**  
 Scenic Rim Real Estate  
 scenic.harcourts.com.au  
 tamborine@harcourts.com.au  
**07 5543 8525**  
 It is about people,  
 it is all about you.

**REMOVALS/HAULAGE**  
 Local Country Vic Palmer Interstate Pre-packing  
**BEENLEIGH REMOVALS**  
 Incorporating Tamborine Mtn Removals  
**Ph: 07 3287 4326**  
**Mobile 0408 743 244**

**Next DEADLINE:**  
**April 9, 2021**

## ROOFING

Martin Foster QBCC 57756  
**Leak Specialists**  
**FOSTERS ROOFING & GUTTERING**  
 Your local Tamborine roofer. Over 35 Years' Exp.  
 Roofing, Guttering, Leaf Guard, Whirlybirds  
 Leaks and Maintenance  
**Ph 0417 748 073 Office 5543 8310**  
 fostersroofingptylt@bigpond.com

**AGENCY UNO PTY LTD - Builder**  
 LIC # QBCC 1203987  
 Repairs and replacement of roof, gutter, downpipes and timber work.  
 Advise and quote.  
**Call: Simon**  
**Mb: 0422 532 397**

**SEPTIC TANK CLEANING**  
**Septic Solutions QLD**  
 Locally Owned & Operated  
**Pumping & Cleaning of Septic, Sullage and Holding Tanks**  
 Grease Traps & Sewerage Treatment Plants  
**PH: Tony 0439 430 242**  
**After hrs: 07 5543 0242**

**POWER PUMPING DOMESTIC SERVICES**  
 Treatment Plants Septic Tanks  
 Sullage Tank Grease Traps  
 Servicing & Repairs  
**T 55452692 M 0408633260**  
 www.yoursepticssystem.com.au

**SIGNWRITING & AUTO ART**  
**Auto Signs**  
 SHOPFRONTS  
 CAR, TRUCK, BOAT WRAPPING  
 VEHICLE SIGNS  
 LIGHTBOXES  
 BANNERS  
 A-FRAMES  
 DIGITAL PRINTING  
 BUSINESS CARDS  
 FLYERS etc  
 DESIGN  
 Call Chris  
**0410 058 204**  
 autoartsigns@bigpond.com  
 GOLD COAST - MT TAMBORINE - CANUNGRA - BEAUDESERT

Tamborine Mountain  
**Signs**  
 • Shops  
 • Vehicles  
 • A – Frames  
 Over 20 Yrs Exp. Free Quotes & Proofs  
**Call Warwick 0421 363 567**  
 warwickpage@bigpond.com

**SKIP HIRE**  
**TAMBORINE SKIPS**  
 2-12m<sup>3</sup> (cubed) bins available, domestic or commercial  
**Book online or phone: 0421 507 303**  
 admin@tamborineskips.com.au | www.tamborineskips.com.au  
 Locally owned and operated

**Next EDITION:**  
**April 15, 2021**



## STORAGE

### ALL TAMBORINE STORAGE

108 MAIN WESTERN ROAD  
TAMBORINE MOUNTAIN  
PHONE 0417 001 536

## SWIMMING POOL SERVICE



PHONE 5545 1126

- Sales, Service and Installation of Pumps, Filtration, Heaters & Cleaners.
  - One off and regular Pool & Spa servicing
  - Pool Chemicals
  - Small Motors and Machinery Servicing
- Monday – Friday 8:30am to 4:30pm Saturday – 8am to 1pm  
Closed Sunday & Public Holidays  
Shop 2/24 Main St, Nth Tamborine

## TELEVISION

### JUSTRITE VIDEO SERVICE

SPECIALIST ANTENNA INSTALLATIONS  
SATELLITE TV AND DIGITAL RADIO  
HOME THEATRE • EQUIPMENT SETUP  
WI-FI • TV, PHONE & DATA POINTS

32 Years Experience **Bruce Howsan** Lic No 71342  
Ph: **5543 8374** Mb: **0438 761 595**

## TILING

### Tiling

QBCC LIC. 69815

Adam Sander  
**0417 616 307**

### Wall & Floor Tiler

Servicing the Scenic Rim for 10 years

- New & Renovation Work
- Wet Areas & Waterproofing

Peter Himberg 0412 263 556



QBCC 15009741

## TREE SERVICES

### Batchelor & Sons

LAND CLEARING  
STUMP REMOVAL & EXCAVATION

- 24/7 Tree Arborists
- 28+ Years of Experience
- We Care for Your Trees

Call Us **0419 686 908**

Let's talk about your tree care needs!

## TREE SERVICES

Tamborine Mtn

Affordable



Tree Service  
**0418 980 862**

Removal & Trimming  
Chipping & Stump Grinding  
ADAM ROUTLEDGE

## TYRES



- AGRICULTURAL
- TRACTOR
- TRUCK
- NEW WHEELS
- TYRE REPAIRS
- FREE TYRE SAFETY CHECK
- FREE AIR IN YOUR TYRES
- WHEELBARROW
- RIDE-ON
- ATV & QUAD
- WHEEL ALIGNMENT
- TUBES

tamborinemountaintyres.com.au

## VET SURGERY

**Tamborine Mtn**  
24 Main Street  
North Tamborine  
**5545 2422**  
all hours  
Mon-Fri 8am-6pm, Saturday 8am-1pm  
After Hours Emergency Service Available

**Canungra**  
Cnr Pine Road & Franklin Street  
**5543 5622**  
all hours  
Mon-Fri 8.30am-5.30pm, Sat 8.30-11.30am  
After Hours Emergency Service Available

**Yarrabilba**  
Cnr Wongawallan Dr & Adler Circuit  
**3180 3096**  
all hours  
Mon-Sat 8am-6pm, Sunday 9am-12noon  
After Hours Emergency Service Available

**BALANCE VET**  
• Housecalls  
• Conventional Medicine  
• Physical Rehab  
• Acupuncture  
• Chiropractic  
**0431 263 728**

## WATER SUPPLIES

### PONY EXPRESS

**MOUNTAIN WATER**  
Est 1985 - Maurice & Debbie  
Friendly, Reliable Delivery  
**\$190 per load**  
BSC Approved  
**7 DAYS A WEEK**  
Ph: 5545 3935 or 0417 644 498

**Mountain Water Supply**  
Quality Mountain Water  
**100% UV Filtered**  
Lic. approved by SRRC  
Also Gravels, Sands, Soils  
Roadbase Tipper Hire  
Michael & Odette Johanson  
Ph **5545 2225**  
**0407 718 203**

## WATER TANK CLEANING & REPAIRS

**The H2O Tank Doctor**  
THE H<sub>2</sub>O TANK DOCTOR  
Lauchlan McConnell  
QBSA 062446 (Est. 1988)  
www.theh2otankdoctor.com.au  
• Water Tank Cleaning & Repairs  
• Minimum water loss cleaning systems  
• Water filtration solution "Roof to Tap"  
Servicing all areas • Free quotes & advice most areas  
Ph **5545 3693** or **0407 649 659**

## WEDDING VIDEO SERVICES

Brisbane-based Videography, specialising in wedding films that capture the natural love & laughter of your day! Also servicing Sunshine Coast & Gold Coast regions.  
T&C's may apply  
[www.facebook.com/aleishagracefilmphoto/](http://www.facebook.com/aleishagracefilmphoto/)  
[vimeo.com/aleishagracefilmphoto](https://vimeo.com/aleishagracefilmphoto)

## WELLNESS AND HEALTH

**Sally Glenister**  
**REFLEXOLOGIST**  
21 years' experience  
**0438 735 908**  
[www.sallyglenister.com](http://www.sallyglenister.com)

## Advertising?

**0417 238 238**

Call or email

[advertising@scenicnews.com.au](mailto:advertising@scenicnews.com.au)



# NEW ART PRIZE FOR WORK OF ANY KIND

**A new national competition for paintings of any subject has been launched offering \$45,000 in prize money.**

The National Capital Art Prize has been set up to support and encourage Australian artists, many of whom have had less opportunity to showcase their works in the last 12 months due to the COVID-19 pandemic.

Director and Founder of the National Capital Art Prize, Mr Bob Stephens, said the new annual prize had been established to promote culturally diverse artistic endeavours and provide a forum where art could be viewed, studied, critiqued and sold.

"The inaugural 2021 National Capital Art Prize welcomes both established and emerging artists to submit pieces on any theme or genre.

"We particularly did not want to put restrictions on the artists and are encouraging entrants to paint whatever they like," he said.

The prize will be the only art competition in Australia which allows entrants to paint any vision, such as portrait, landscape or abstract, and use any medium including oil, acrylic, watercolour, mixed media, or pencil.

Each artist can enter up to four different paintings in any combination of the four main categories which include Open, First Nations Prize for Indigenous and Torres Strait Islander artists, Landscape and Student.

Finalists will also have the chance to win the People's Choice Award voted by the public, and in 2021 there will also be an Art Scholarship offered in partnership with the Australian National University (ANU).

"Entrants only need to be Australian citizens or permanent residents of Australia, and over 18 years of age, so we really do welcome all entries," Mr Stephens said.

"We are very much looking forward to what the 2021 competition will bring," he added.

Entries opened on March 30 and close on July 1. Finalists will be announced on August 2 and displayed in a public exhibition in Canberra from September 18.

All finalists' works will be available for sale, giving the artists a strong commercial opportunity.

Further details are available at [www.nationalcapitalartprize.com.au](http://www.nationalcapitalartprize.com.au)

# BOONAH WRITERS' FESTIVAL IS UNIQUE



**Boonah Writers' Festival 2021 to be held at Boonah Cultural Centre on the weekend of May 1 and 2 is a writers' festival unique in Australia.**

Unique in that it is carefully planned to enable participants to attend each and every workshop without having to select the most appealing, and unique in that the fee is all encompassing and includes all meals and coffee breaks, as well as the six workshops to be conducted by six leaders in their respective fields.

It also provides the opportunity to meet each presenter in an informal chat during the program breaks and at the gala dinner on the Saturday night.

One of this year's presenters is Colin Handley who will conduct his workshop Writing for Action on the opening day of the festival.

It will include some of the more important skills relating to film fighting and general action, including the theory of stunts, stunt tumbling, fight skills, camera work and acting, all of which will create a realistic fight scene on film and in books.

Handley is a veteran of film and television, has performed stunts and acted in many films and television shows in Australia, England and USA. He has trained with Chuck Norris, and worked with Arnold Schwarzenegger, Jean-Claude Van Damme, Sylvester Stallone, David Hasselhoff, Bruce Willis and Johnny Depp.

Other presenters include;

- Ann Earle - Introduction to Scrivener: A Better Way to Organise Your Writing
- Madeline Dale - Finding Your Poem
- Virginia Miranda - Flash Fiction
- Edwina Shaw - Building a Career as a Writer
- Vicki Bennett - Writing a Children's Book

Included in the festival cost is all food and refreshments for the two days, including dinner Saturday night with guest speaker Sam Cutler promoting his book, "You Can't Always Get What You Want: My Life with the Rolling Stones, the Grateful Dead and other Wonderful Reprobates."

Bookings are available on [www.boonahwritersfestival.org.au](http://www.boonahwritersfestival.org.au).

For further information, contact [writersfestival@boonahculturalfoundation.org.au](mailto:writersfestival@boonahculturalfoundation.org.au), or Diana on 0411 433 474.

# LIONS HELP CANCER FUND RAISING



**Tamborine Mountain Lions Club members at Vonda Youngman Community Centre with snacks for drivers in the Box Motoring Rally which was held to raise funds in support of cancer research.**

Money raised by sponsorship of the rally went to Cancer Council projects, including the development and testing of new anti-cancer drugs and therapies.

More than 50 participants stopped for morning tea on their drive between the Gold Coast and Bunjuren, near Boonah. They enjoyed tea, coffee or soft drinks, together with a range of sweet and savoury snacks. For more details of the rallies, check out their website [www.boxraliies.com](http://www.boxraliies.com).



# firehaus

Offering some of the world's most premium brands.  
 Contact us on **1800 200 240** or visit our showroom located at  
**10 Shettleston Street, Rocklea QLD**



**KALORA 425R**  
 Radiant wood heater  
 Up to 140m2 heating

RRP \$1,518  
**\$1,099**  
 Free Flue Kit



**KEMLAN CUBE**  
 Up to 260m2 heating  
 Overnight burn times  
 3 base options (images on website)

RRP \$4,363  
**\$3,399**  
 with base  
 Free Flue Kit

Standard wood installation from only **\$599**



**KEMLAN TEMPO STACK**  
 Up to 180m2 heating  
 Convenient wood storage  
 Cooktop surface

RRP \$2,655  
**\$1,999**  
 Free Flue Kit



**KEMLAN XL**  
 Up to 360m2 heating  
 Large viewing area  
 3 Speed fan

RRP \$3,863  
**\$2,999**  
 Free Flue Kit



**KEMLAN TEMPO 3 LEGS**  
 Up to 180m2 heating  
 Pedestal or leg base  
 Cooktop surface

RRP \$2,105  
**\$1,549**  
 Free Flue Kit

**woodfires | gas fires | electric | bioethanol | accessories**

[www.firehaus.com.au](http://www.firehaus.com.au)